



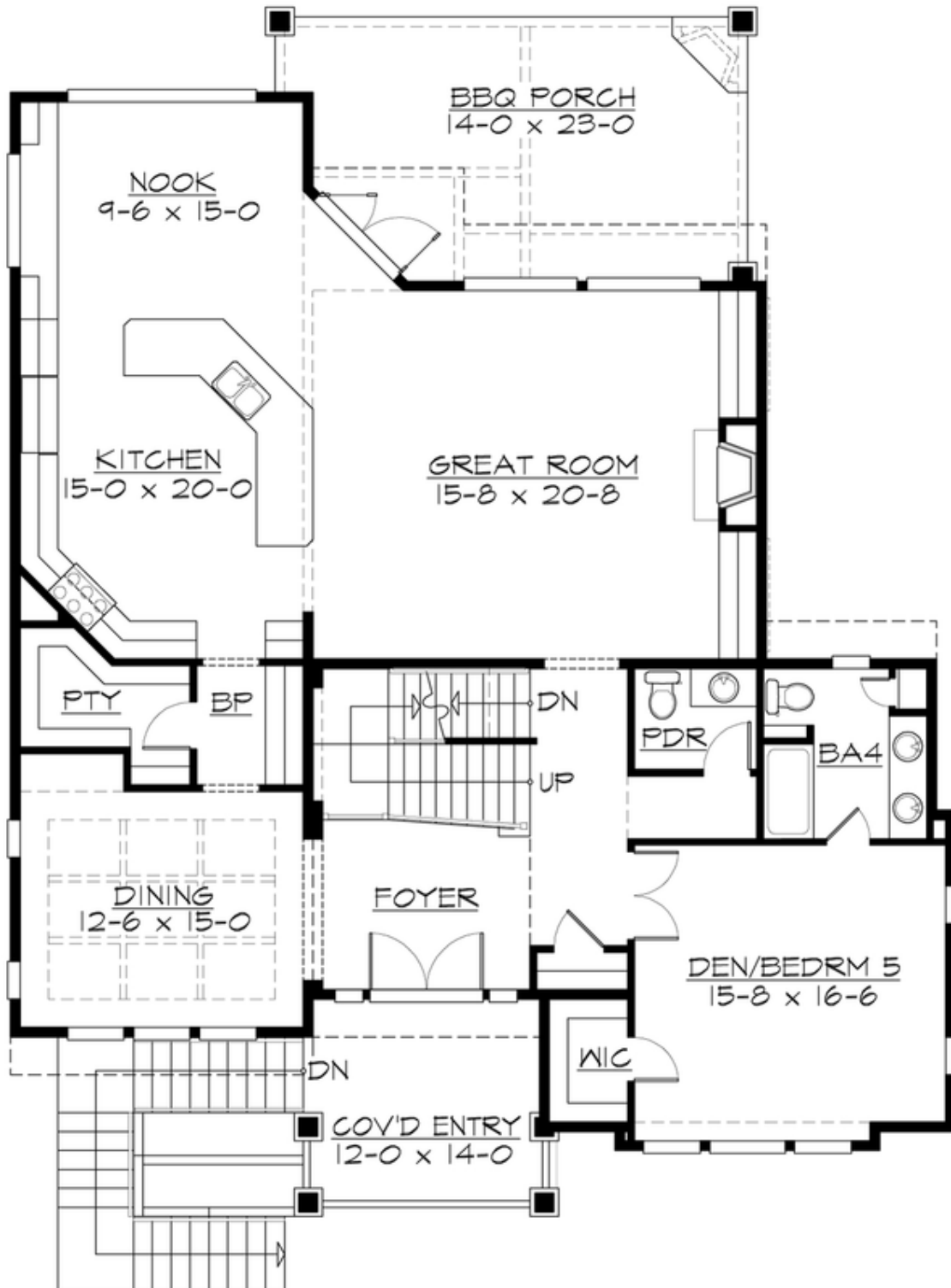
## GRANVILLE - PLAN M5074A3FU-0DB

Total Area: 5091 sq. ft.  
Garage Area: 764 sq. ft.  
Garage Area: 764 sq. ft.  
Garage Size: 3  
Stories: 3  
Bedrooms: 5  
Full Baths: 4  
Half Baths: 1  
Width: 50'-0"  
Depth: 68'-0"  
Height: 28'-0"  
Foundation: Daylight Basement



## GRANVILLE - PLAN M5074A3FU-0DB

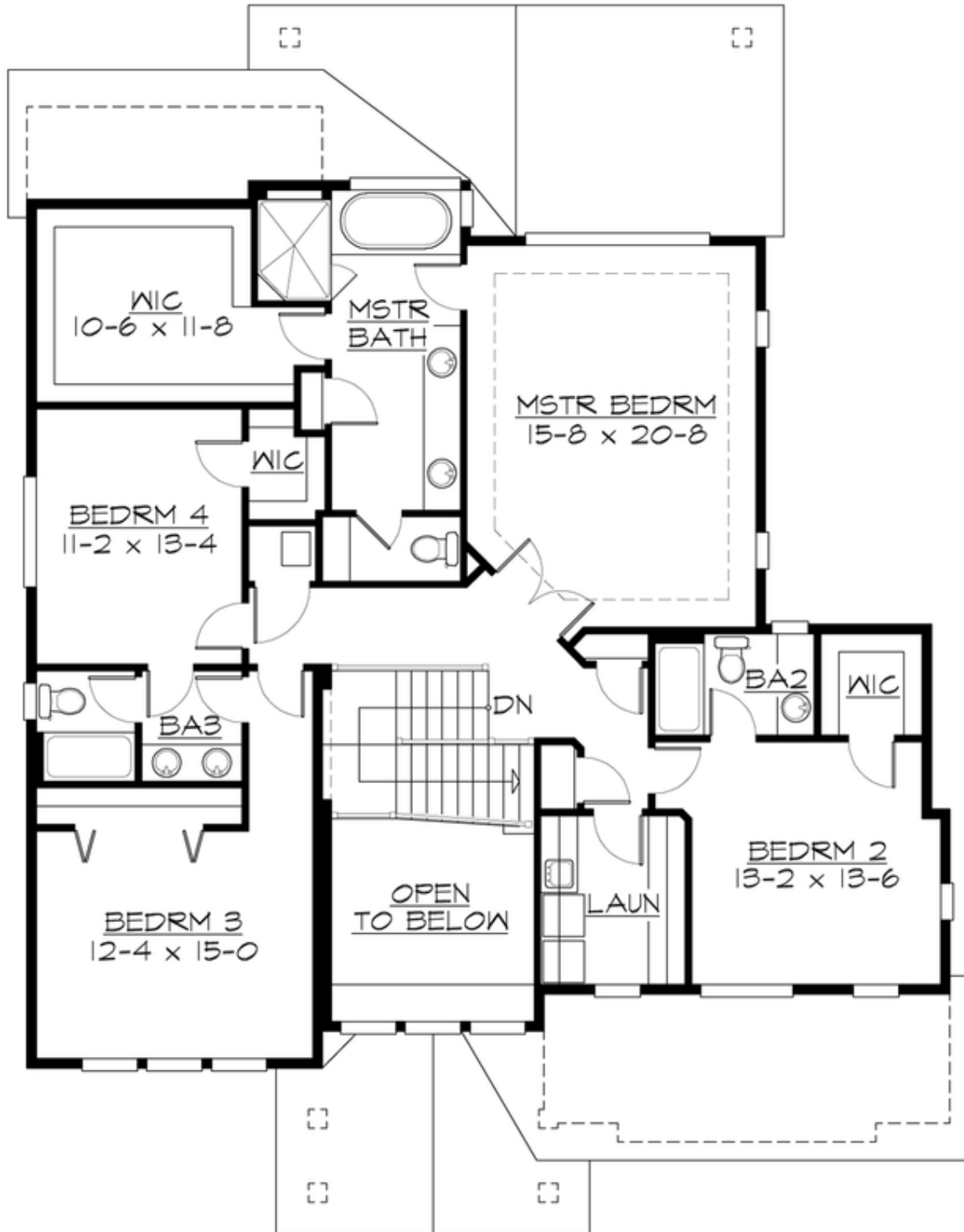
### MAIN FLOOR





## GRANVILLE - PLAN M5074A3FU-0DB

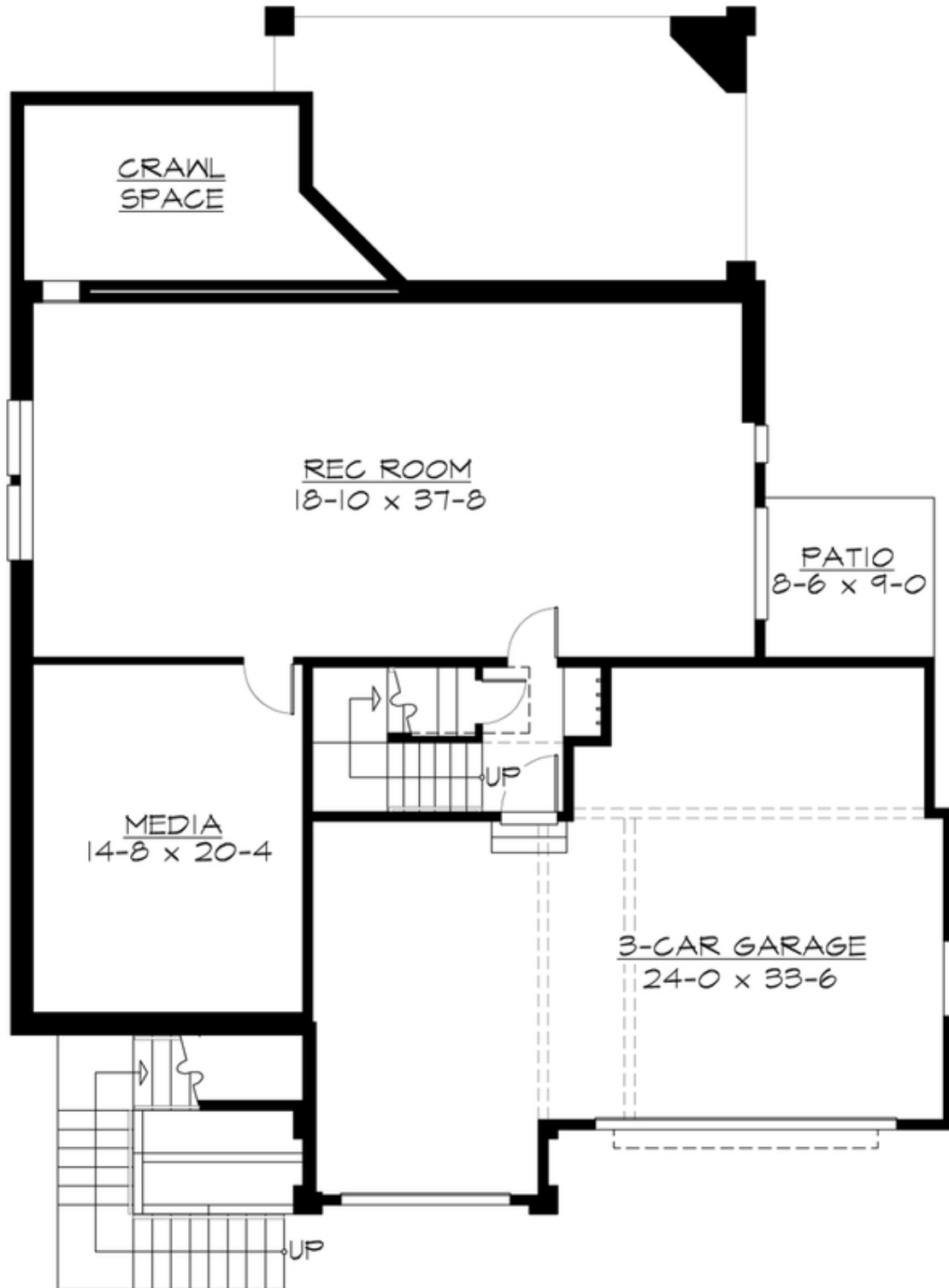
### UPPER FLOOR





**GRANVILLE - PLAN M5074A3FU-0DB**

**LOWER FLOOR**







## GRANVILLE - PLAN M5074A3FU-0DB

### PLAN DETAILS

#### Area Summary

Total Area:	5091 sq. ft.
Main Floor:	2065 sq. ft.
Upper Floor:	1733 sq. ft.
Lower Floor:	1253 sq. ft.
Garage Floor:	764 sq. ft.

#### General Information

Stories:	3
Width:	50'-0"
Depth:	68'-0"
Height:	28'-0"

#### Architectural Style

Craftsman  
Shingle  
Traditional

#### Number of Rooms

Bedrooms:	5
Full Baths:	4
Half Baths:	1

#### Garage

Garage Size:	3
Garage Door Location:	Front
Garage Type:	Under

#### Roof Pitches

Primary:	6:12
Secondary:	4:12

#### Wall Heights

Main:	10'-0"
Upper:	9'-0"
3rd Floor:	0'-0"
Lower:	10'-0"

#### Foundation Type

Daylight Basement

#### Roof Framing

Combination

#### Floor Load

Live (lbs):	40 PSF
Dead (lbs):	10 PSF

#### Roof Load

Live (lbs):	25 PSF
Dead (lbs):	15 PSF
Wind:	85 MPH

#### Design Features

- Bonus Space @ Lower Floor
- Front and Rear Porch
- Great Room
- Laundry Room @ Upper Floor
- Master Bedroom @ Upper Floor Rear
- Narrow Lot
- View Lot - Rear