



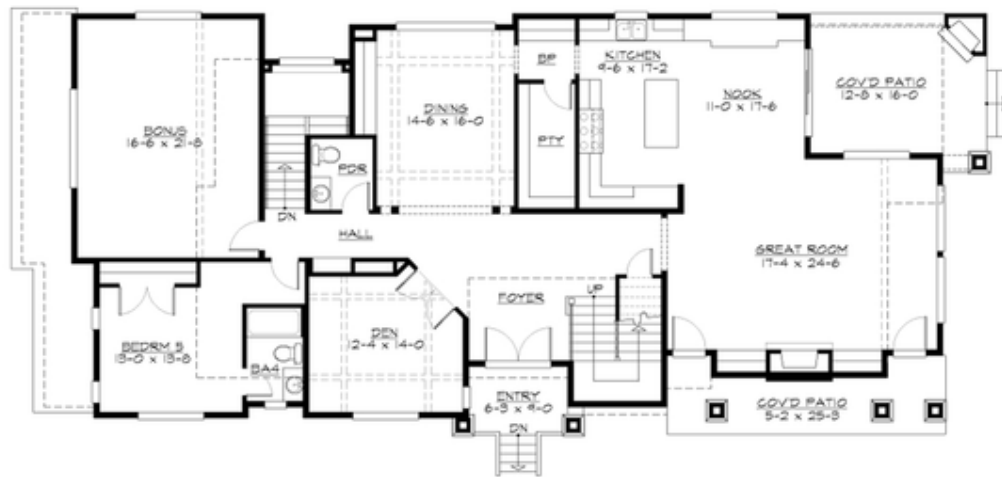
## SOMERSBY - PLAN M4991A3SU-0PB

Total Area: 4991 sq. ft.  
Garage Area: 743 sq. ft.  
Garage Area: 743 sq. ft.  
Garage Size: 3  
Stories: 3  
Bedrooms: 5  
Full Baths: 4  
Half Baths: 1  
Width: 87'-6"  
Depth: 38'-0"  
Height: 27'-0"  
Foundation: Daylight Basement



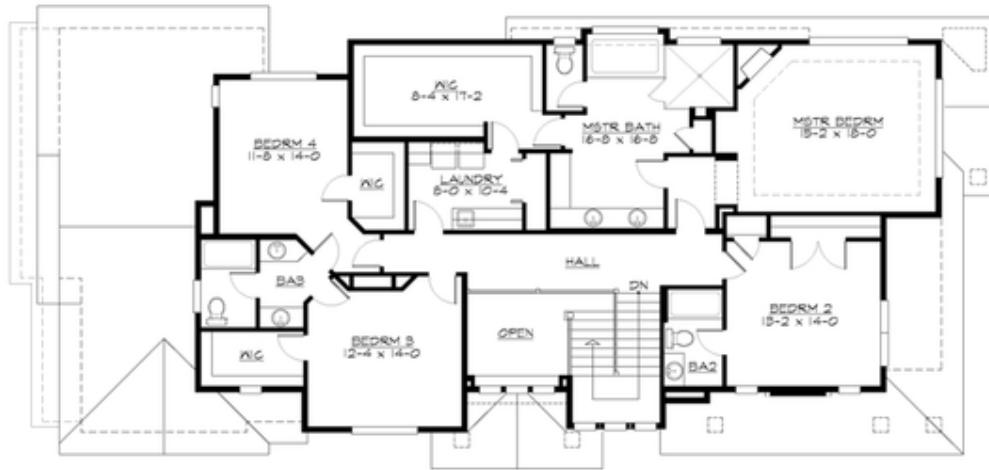
**SOMERSBY - PLAN M4991A3SU-0PB**

**MAIN FLOOR**



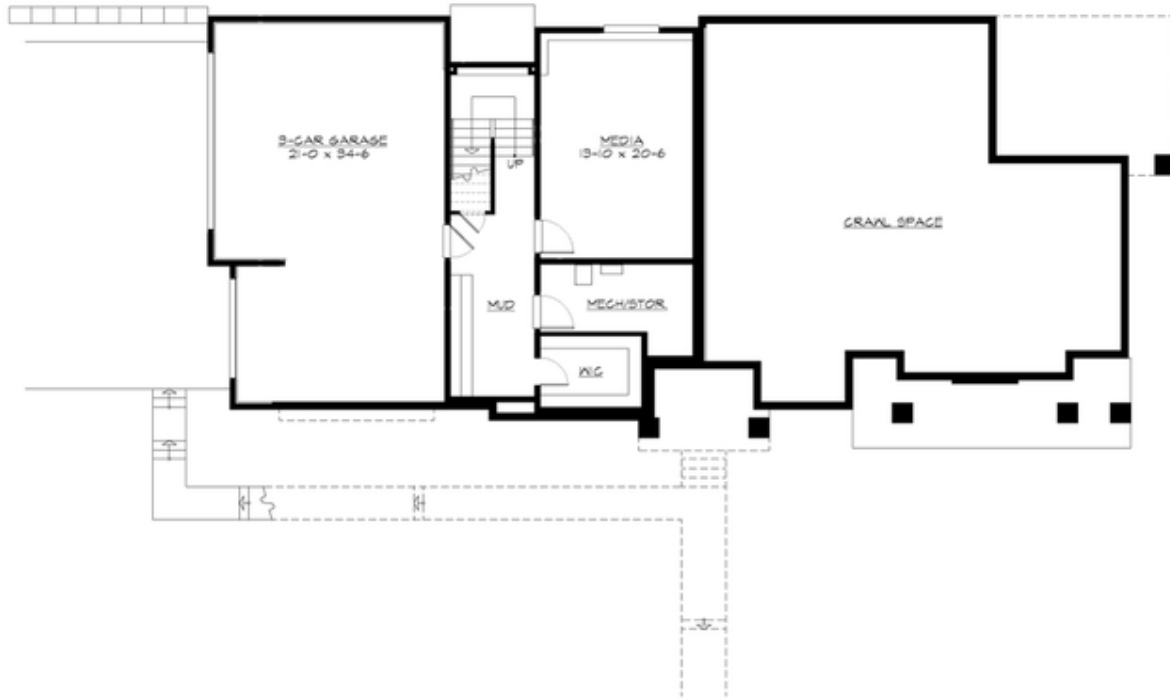
## SOMERSBY - PLAN M4991A3SU-0PB

### UPPER FLOOR



## SOMERSBY - PLAN M4991A3SU-0PB

### LOWER FLOOR





## SOMERSBY - PLAN M4991A3SU-0PB

### PLAN DETAILS

#### Area Summary

Total Area:	4991 sq. ft.
Main Floor:	2429 sq. ft.
Upper Floor:	1925 sq. ft.
Lower Floor:	637 sq. ft.
Garage Floor:	743 sq. ft.

#### General Information

Stories:	3
Width:	87'-6"
Depth:	38'-0"
Height:	27'-0"

#### Architectural Style

Craftsman  
Northwest  
Traditional

#### Number of Rooms

Bedrooms:	5
Full Baths:	4
Half Baths:	1

#### Garage

Garage Size:	3
Garage Door Location:	Side

#### Roof Pitches

Primary:	4:12
Secondary:	3:12

#### Wall Heights

Main:	10'-0"
Upper:	9'-0"
3rd Floor:	0'-0"
Lower:	9'-0"

#### Foundation Type

Daylight Basement

#### Roof Framing

Trusses

#### Floor Load

Live (lbs):	40 PSF
Dead (lbs):	10 PSF

#### Roof Load

Live (lbs):	25 PSF
Dead (lbs):	15 PSF
Wind:	85 MPH

#### Design Features

- Bonus Space @ Upper Floor & Lower Floor
- Den/Office
- Front and Rear Porch
- Great Room
- Laundry Room @ Upper Floor
- Master Bedroom @ Upper Floor Rear
- View Lot - Rear
- Wide Lot