



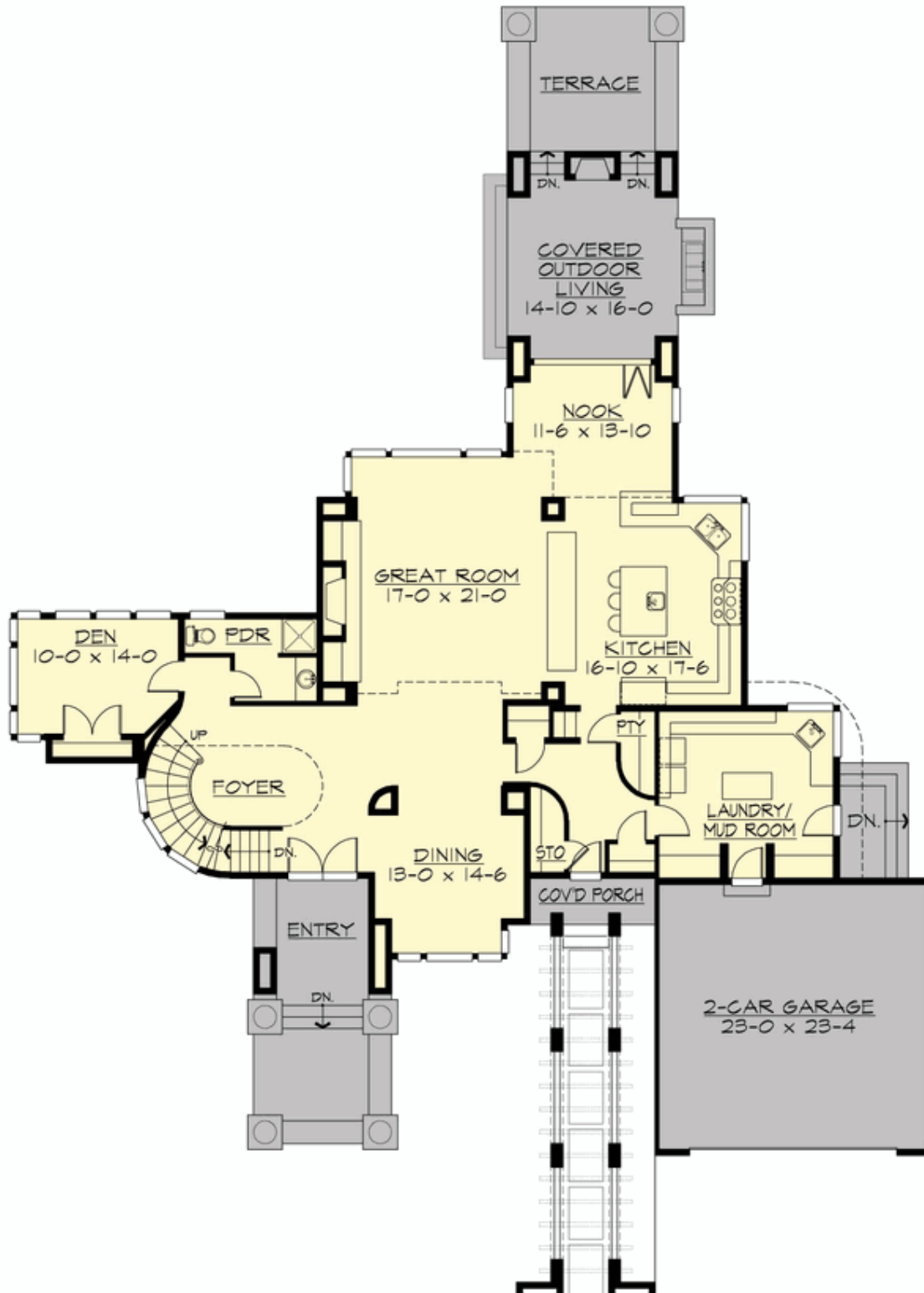
## PRAIRIEVALE - PLAN M4750A2F2FD-1DB

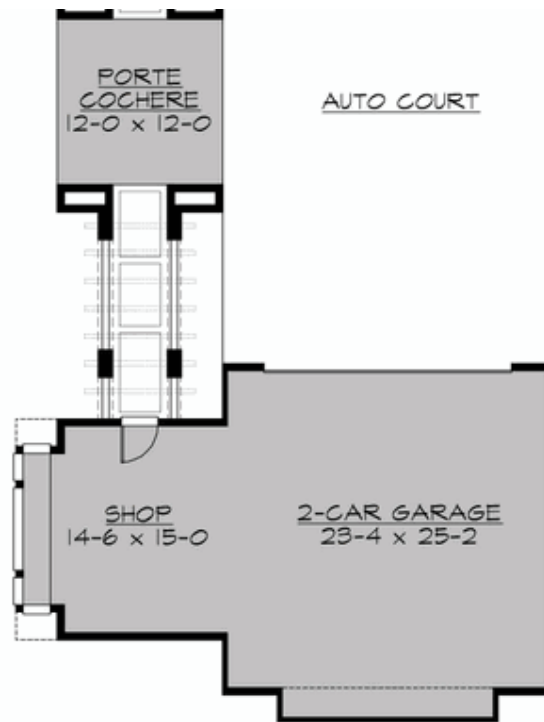
Total Area: 5824 sq. ft.  
Garage Area: 1403 sq. ft.  
Garage Area: 1403 sq. ft.  
Garage Size: 4  
Stories: 3  
Bedrooms: 3  
Full Baths: 3  
Half Baths: 1  
Width: 80'-0"  
Depth: 165'-0"  
Height: 27'-0"  
Foundation: Daylight Basement



## PRAIRIEVALE - PLAN M4750A2F2FD-1DB

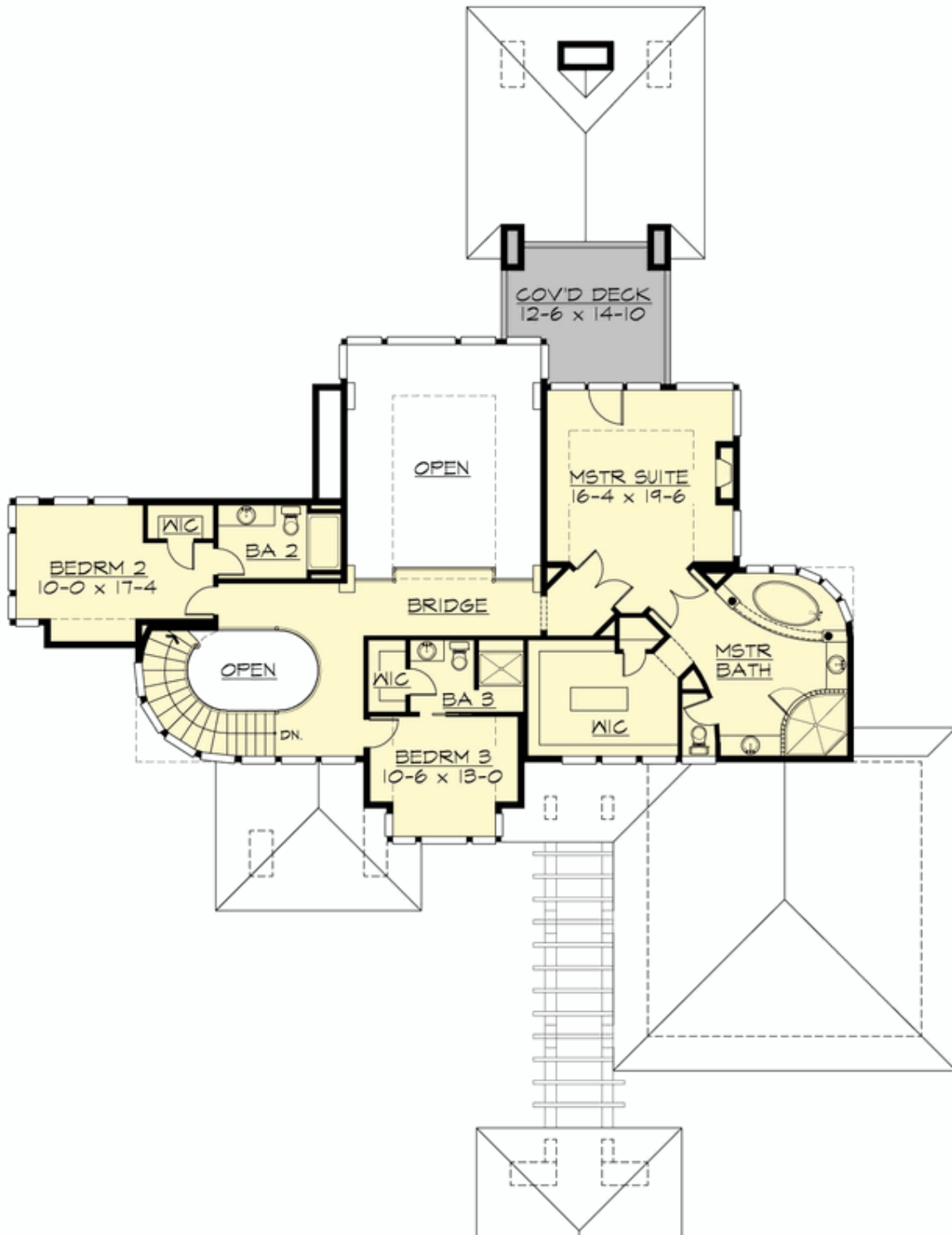
### MAIN FLOOR

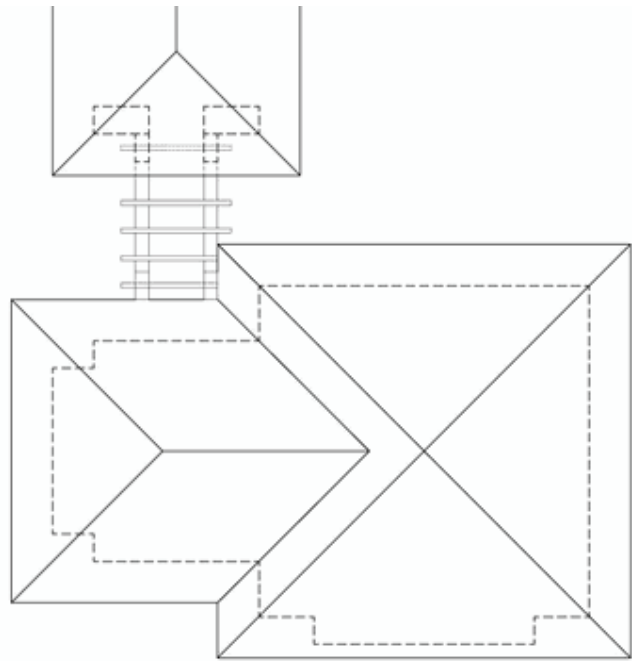




**PRAIRIEVALE - PLAN M4750A2F2FD-1DB**

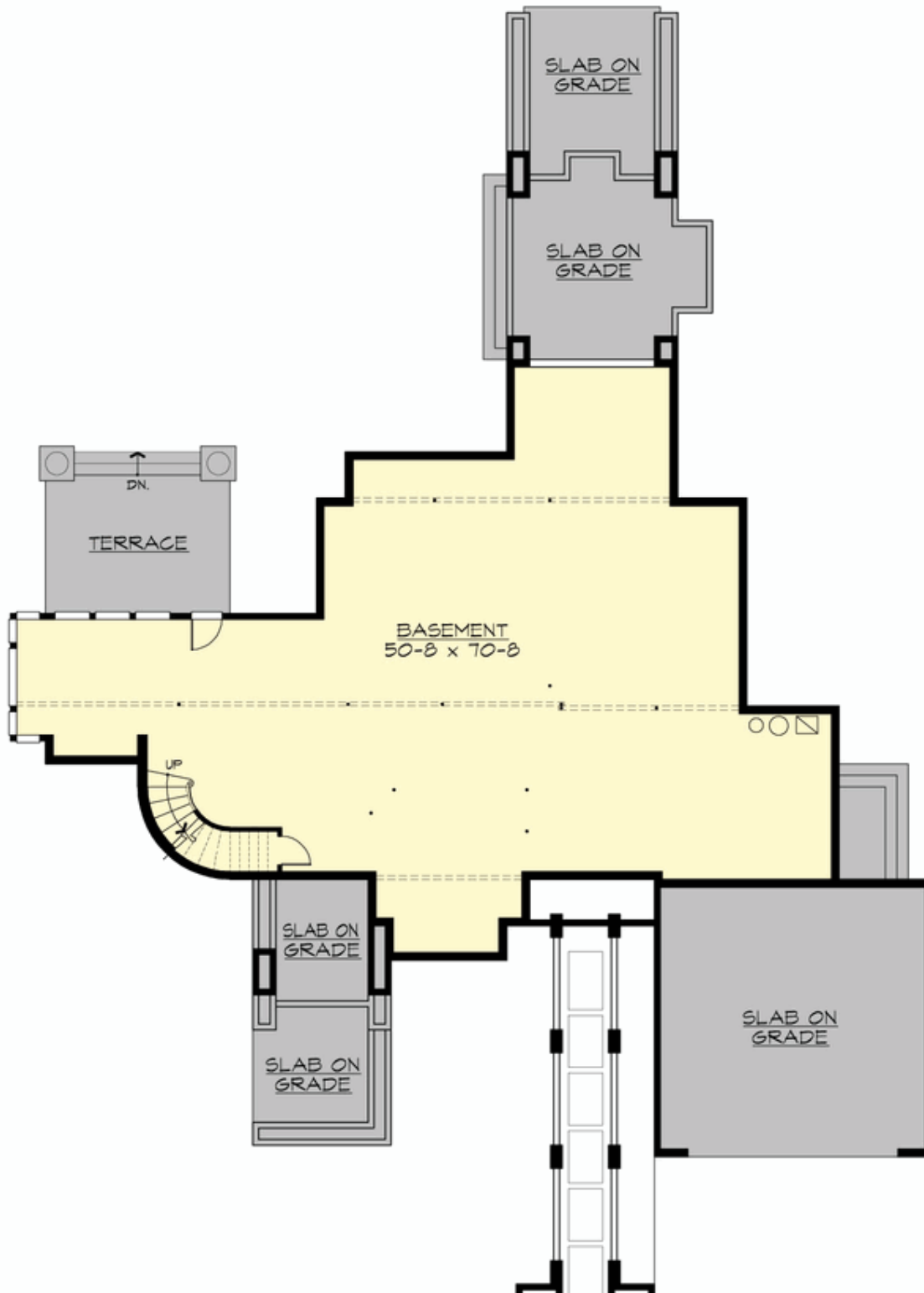
**UPPER FLOOR**

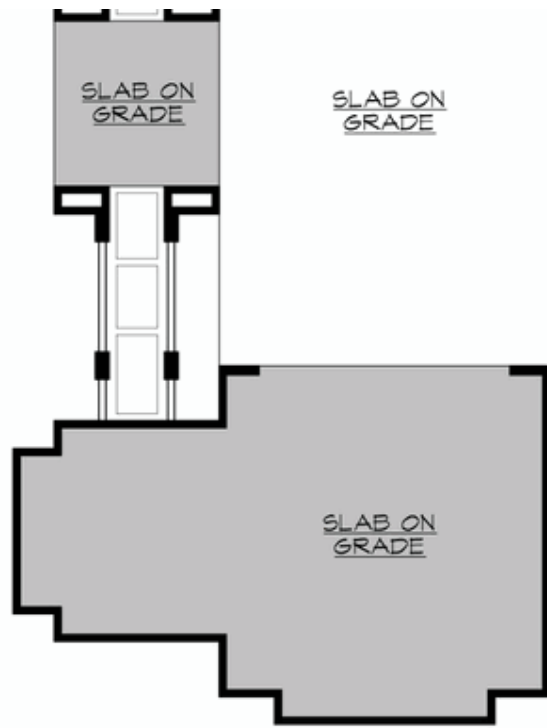




**PRAIRIEVALE - PLAN M4750A2F2FD-1DB**

**LOWER FLOOR**







## PRAIRIEVALE - PLAN M4750A2F2FD-1DB

### PLAN DETAILS

#### Area Summary

Total Area:	5824 sq. ft.
Main Floor:	2160 sq. ft.
Upper Floor:	1504 sq. ft.
Lower Floor:	2160 sq. ft.
Garage Floor:	1403 sq. ft.

#### General Information

Stories:	3
Width:	80'-0"
Depth:	165'-0"
Height:	27'-0"

#### Architectural Style

Contemporary  
Modern  
Prairie

#### Number of Rooms

Bedrooms:	3
Full Baths:	3
Half Baths:	1

#### Garage

Garage Size:	4
Garage Door Location:	Front
Garage Type:	Detached

#### Roof Pitches

Primary:	4:12
----------	------

#### Wall Heights

Main:	10'-0"
Upper:	9'-0"
3rd Floor:	0'-0"
Lower:	8'-0"

#### Foundation Type

Daylight Basement

#### Roof Framing

Trusses

#### Floor Load

Live (lbs):	40 PSF
Dead (lbs):	10 PSF

#### Roof Load

Live (lbs):	25 PSF
Dead (lbs):	15 PSF
Wind:	85 MPH

#### Design Features

- Bonus Space @ Lower Floor
- Den/Office
- Front and Rear Porch
- Great Room
- Laundry Room @ Main Floor
- Master Bedroom @ Upper Floor Rear
- View Lot - Rear
- Wide Lot