

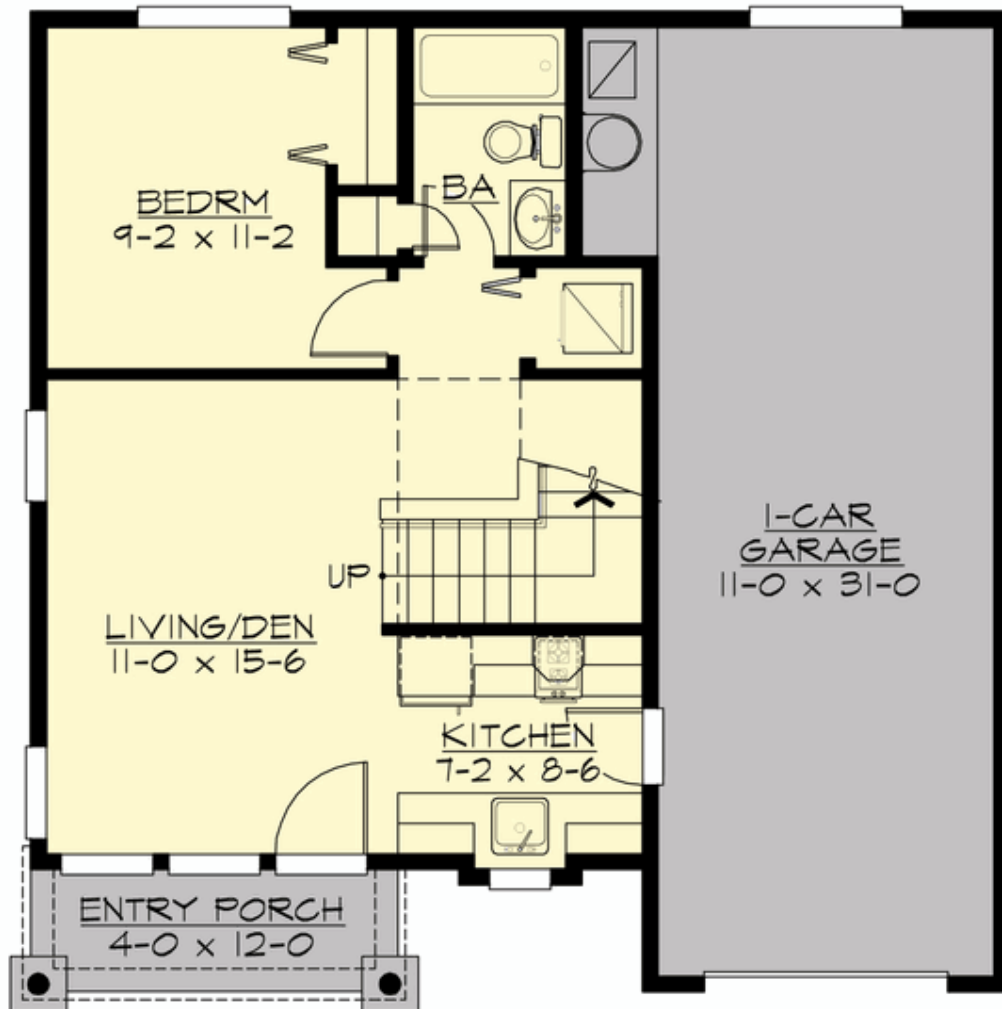
## LINDELBROOK - PLAN A790A1F-0

Total Area: 790 sq. ft.  
Garage Area: 390 sq. ft.  
Garage Area: 390 sq. ft.  
Garage Size: 1  
Stories: 2  
Bedrooms: 2  
Full Baths: 2  
Width: 32'-0"  
Depth: 32'-0"  
Height: 20'-6"  
Foundation: Slab On Grade



**LINDELBROOK - PLAN A790A1F-0**

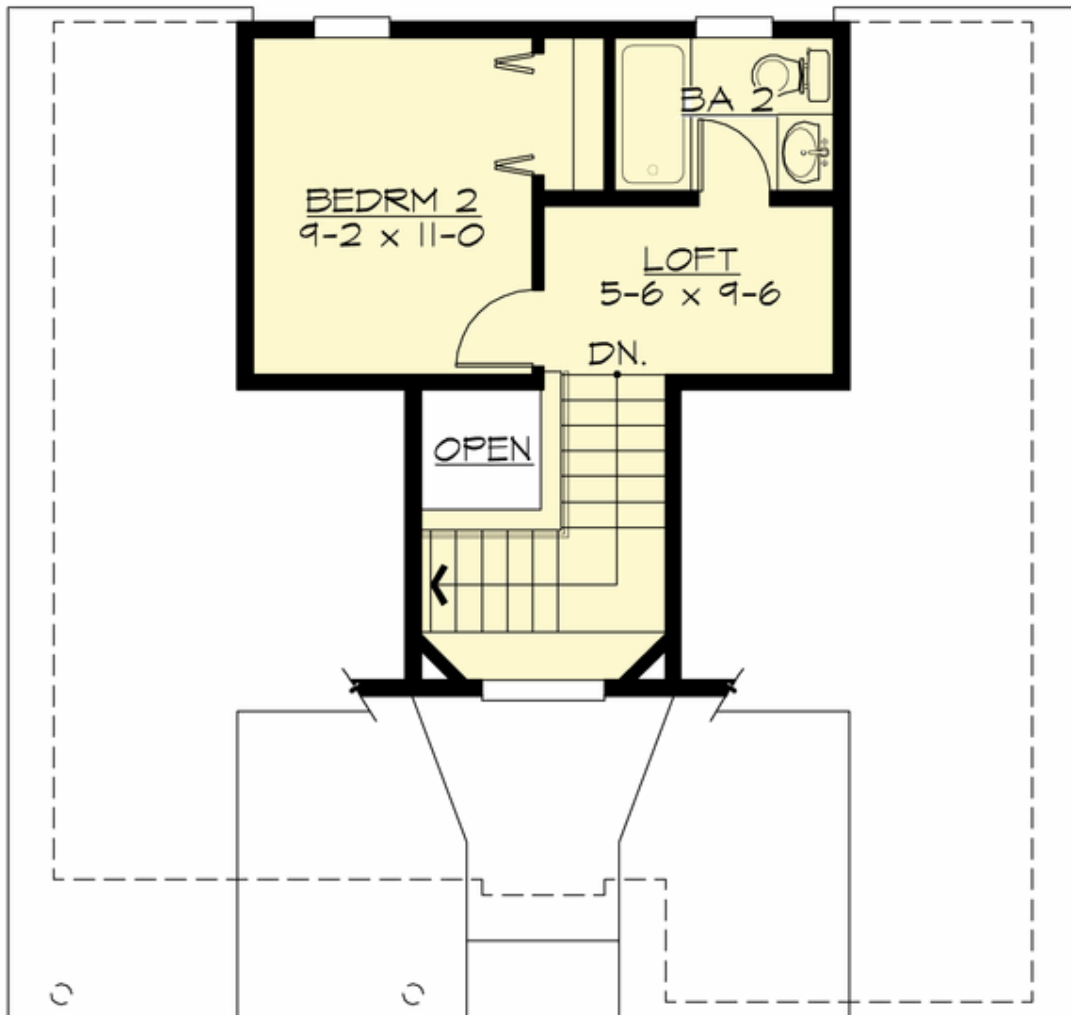
**MAIN FLOOR**



© 2013 ARCHITECTS NORTHWEST, INC.

**LINDELBROOK - PLAN A790A1F-0**

**UPPER FLOOR**



© 2013 ARCHITECTS NORTHWEST, INC.



## LINDELBROOK - PLAN A790A1F-0

### PLAN DETAILS

#### Area Summary

Total Area:	790 sq. ft.
Main Floor:	554 sq. ft.
Upper Floor:	236 sq. ft.
Garage Floor:	390 sq. ft.

#### General Information

Stories:	2
Width:	32'-0"
Depth:	32'-0"
Height:	20'-6"

#### Architectural Style

Cottage  
Shingle  
Traditional

#### Number of Rooms

Bedrooms:	2
Full Baths:	2

#### Garage

Garage Size:	1
Garage Door Location:	Front

#### Roof Pitches

Primary:	8:12
Secondary:	4:12

#### Wall Heights

Main:	9'-0"
Upper:	8'-0"
3rd Floor:	0'-0"
Lower:	0'-0"

#### Foundation Type

Slab On Grade

#### Roof Framing

Trusses

#### Floor Load

Live (lbs):	40 PSF
Dead (lbs):	10 PSF

#### Roof Load

Live (lbs):	25 PSF
Dead (lbs):	15 PSF
Wind:	85 MPH

#### Design Features

- Affordable Plan
- Bonus Space @ Upper Floor
- Den/Office
- Front Porch
- Laundry Room @ Main Floor
- Master Bedroom @ Main Floor Rear
- Small Plan