



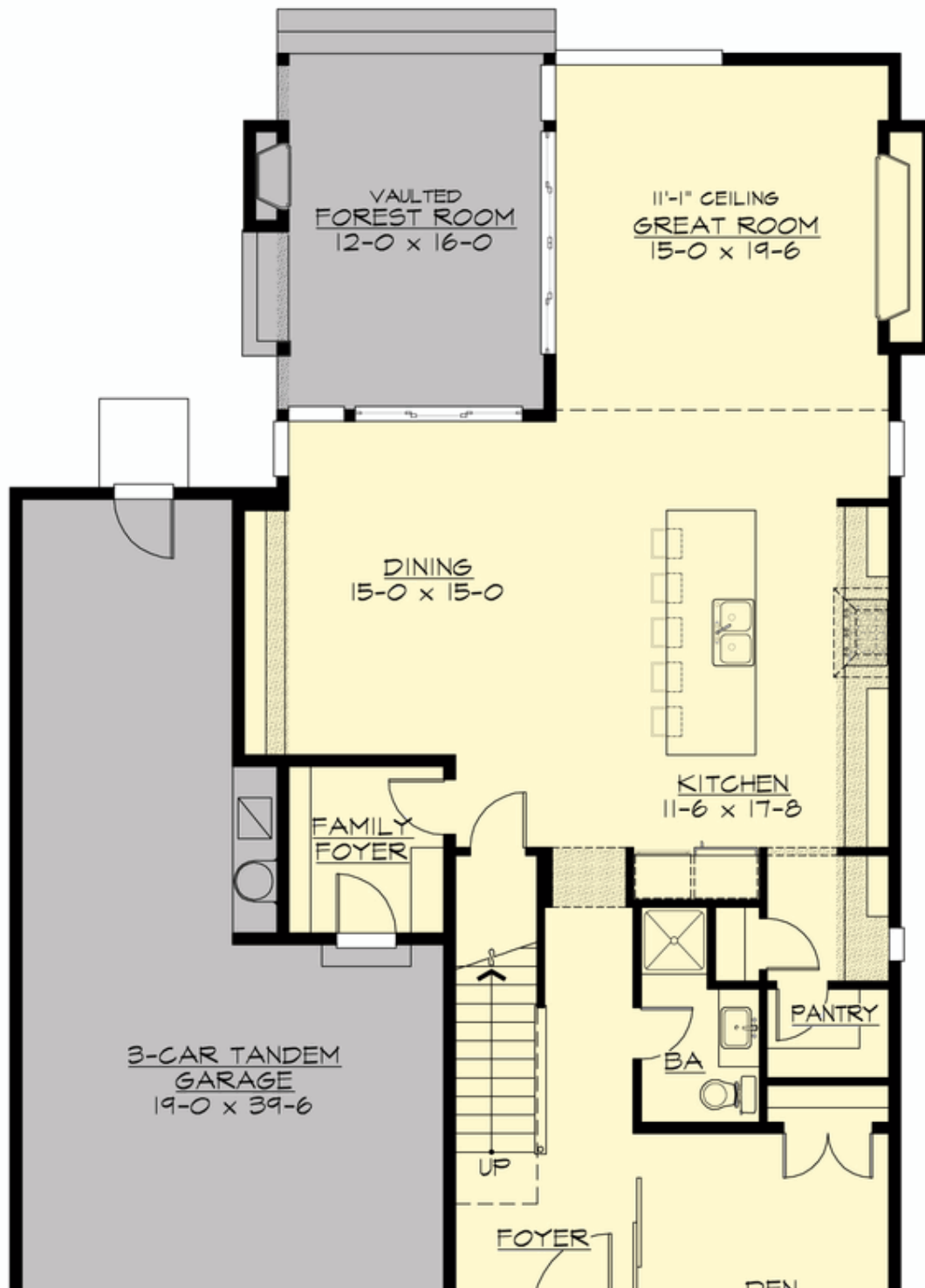
ARIES - PLAN M3110B3FT-0

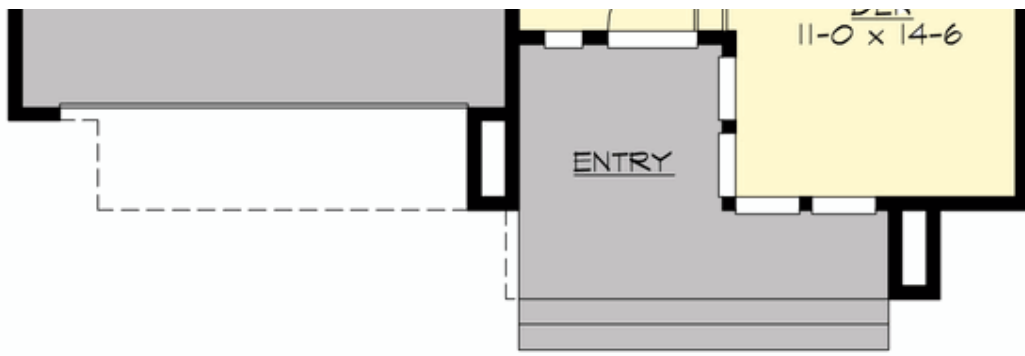
Total Area: 3105 sq. ft.
Garage Area: 622 sq. ft.
Garage Area: 622 sq. ft.
Garage Size: 3
Stories: 2
Bedrooms: 4
Full Baths: 3
Width: 40'-0"
Depth: 67'-0"
Height: 25'-6"
Foundation: Crawl Space



ARIES - PLAN M3110B3FT-0

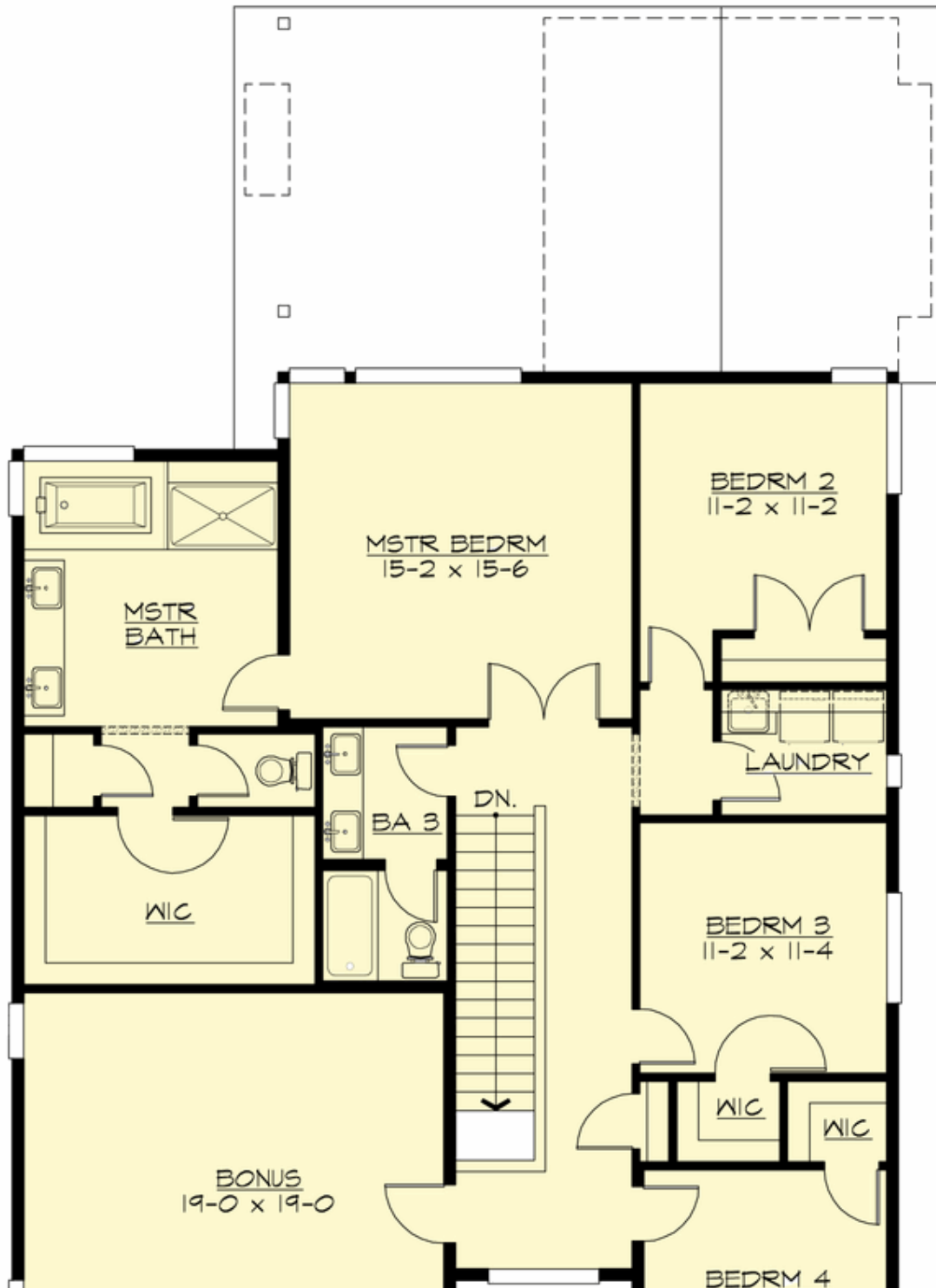
MAIN FLOOR

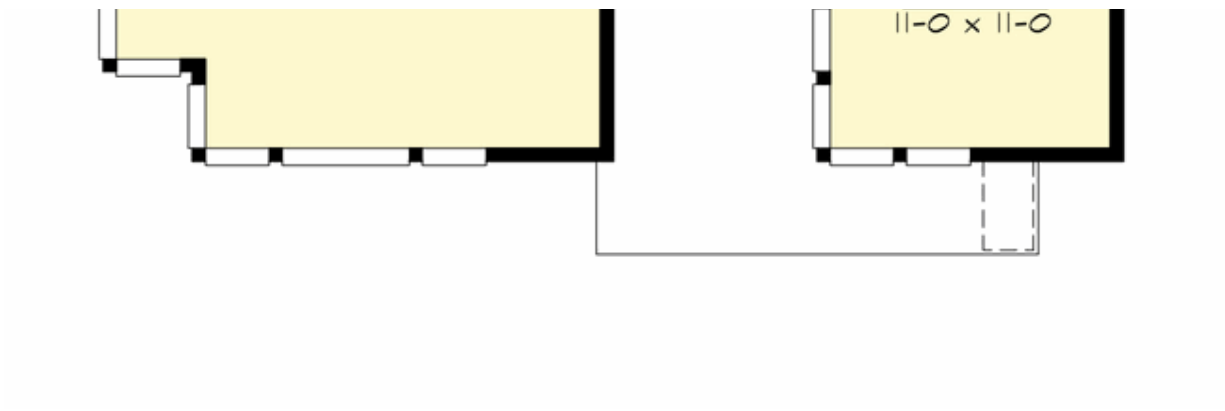




ARIES - PLAN M3110B3FT-0

UPPER FLOOR







ARIES - PLAN M3110B3FT-0

PLAN DETAILS

Area Summary

Total Area: 3105 sq. ft.
Main Floor: 1370 sq. ft.
Upper Floor: 1735 sq. ft.
Garage Floor: 622 sq. ft.

General Information

Stories: 2
Width: 40'-0"
Depth: 67'-0"
Height: 25'-6"

Architectural Style

Contemporary
Modern
Prairie

Number of Rooms

Bedrooms: 4
Full Baths: 3

Garage

Garage Size: 3
Garage Door Location: Front
Garage Type: Tandem

Roof Pitches

Primary: 4:12
Secondary: 2:12

Wall Heights

Main: 9'-0"
Upper: 8'-0"
3rd Floor: 0'-0"
Lower: 0'-0"

Foundation Type

Crawl Space

Roof Framing

Trusses

Floor Load

Live (lbs): 40 PSF
Dead (lbs): 10 PSF

Roof Load

Live (lbs): 25 PSF
Dead (lbs): 15 PSF
Wind: 85 MPH

Design Features

- Best Selling Plan
- Bonus Space @ Upper Floor
- Den/Office
- Great Room
- Laundry Room @ Upper Floor
- Master Bedroom @ Upper Floor Rear
- Narrow Lot
- Rear Porch
- View Lot - Rear