



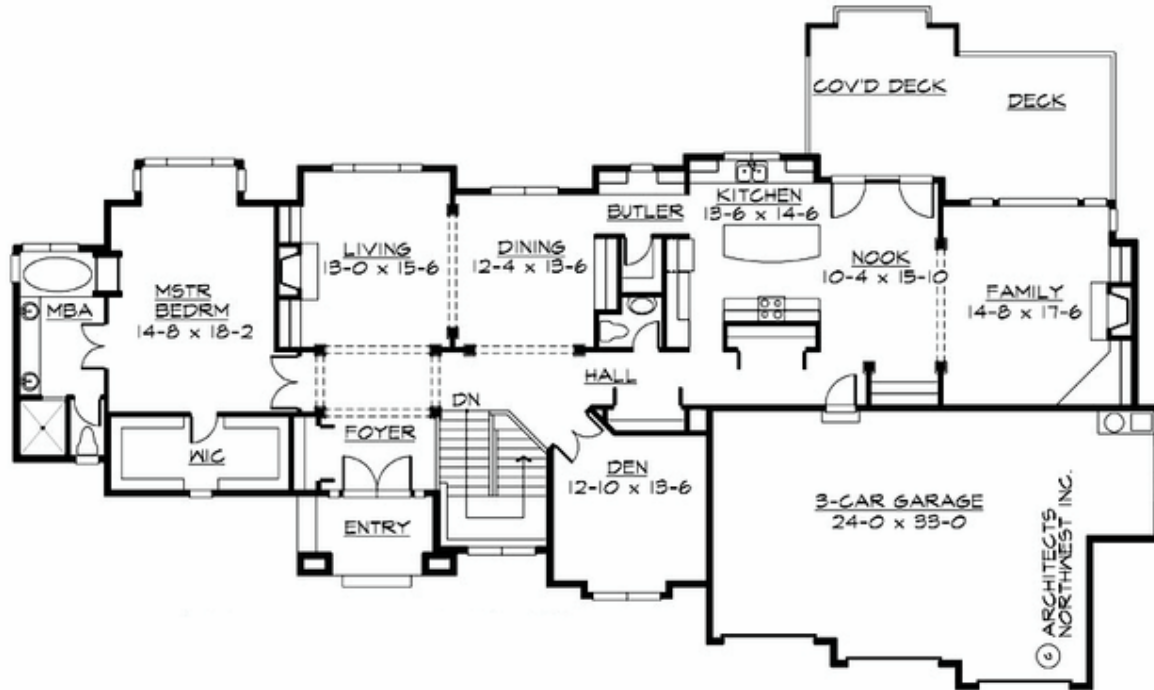
## BRIDGEPORT - PLAN R4372A3F-0DB

Total Area: 4372 sq. ft.  
Garage Area: 817 sq. ft.  
Garage Area: 817 sq. ft.  
Garage Size: 3  
Stories: 2  
Bedrooms: 4  
Full Baths: 3  
Half Baths: 1  
Width: 101'-0"  
Depth: 59'-0"  
Height: 28'-0"  
Foundation: Daylight Basement



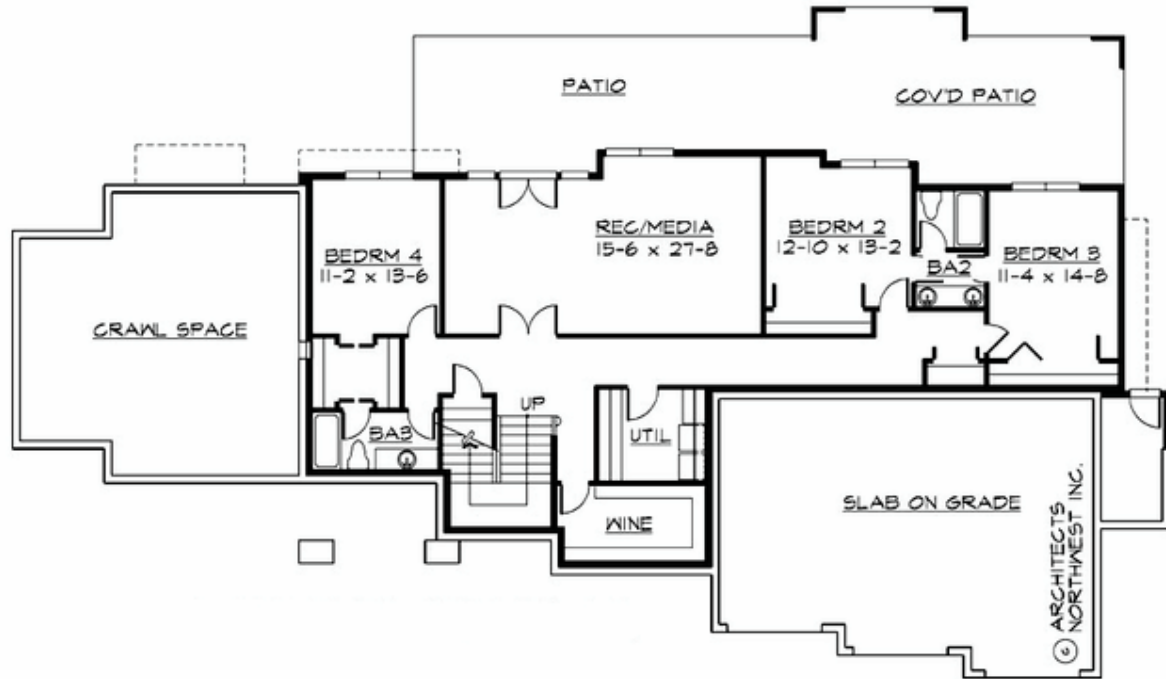
## BRIDGEPORT - PLAN R4372A3F-0DB

### MAIN FLOOR



**BRIDGEPORT - PLAN R4372A3F-0DB**

**LOWER FLOOR**





## BRIDGEPORT - PLAN R4372A3F-0DB

### PLAN DETAILS

#### Area Summary

Total Area: 4372 sq. ft.  
Main Floor: 2448 sq. ft.  
Lower Floor: 1924 sq. ft.  
Garage Floor: 817 sq. ft.

#### General Information

Stories: 2  
Width: 101'-0"  
Depth: 59'-0"  
Height: 28'-0"

#### Architectural Style

Craftsman  
Hampton  
Traditional

#### Number of Rooms

Bedrooms: 4  
Full Baths: 3  
Half Baths: 1

#### Garage

Garage Size: 3  
Garage Door Location: Front

#### Roof Pitches

Primary: 10:12

#### Wall Heights

Main: 12'-0"  
Upper: 0'-0"  
3rd Floor: 0'-0"  
Lower: 10'-0"

#### Foundation Type

Daylight Basement

#### Roof Framing

Trusses

#### Floor Load

Live (lbs): 40 PSF  
Dead (lbs): 10 PSF

#### Roof Load

Live (lbs): 25 PSF  
Dead (lbs): 15 PSF  
Wind: 85 MPH

#### Design Features

- Bonus Space @ Lower Floor
- Den/Office
- Laundry Room @ Lower Floor
- Living & Family Room
- Luxury Plan
- Master Bedroom @ Main Floor Rear