



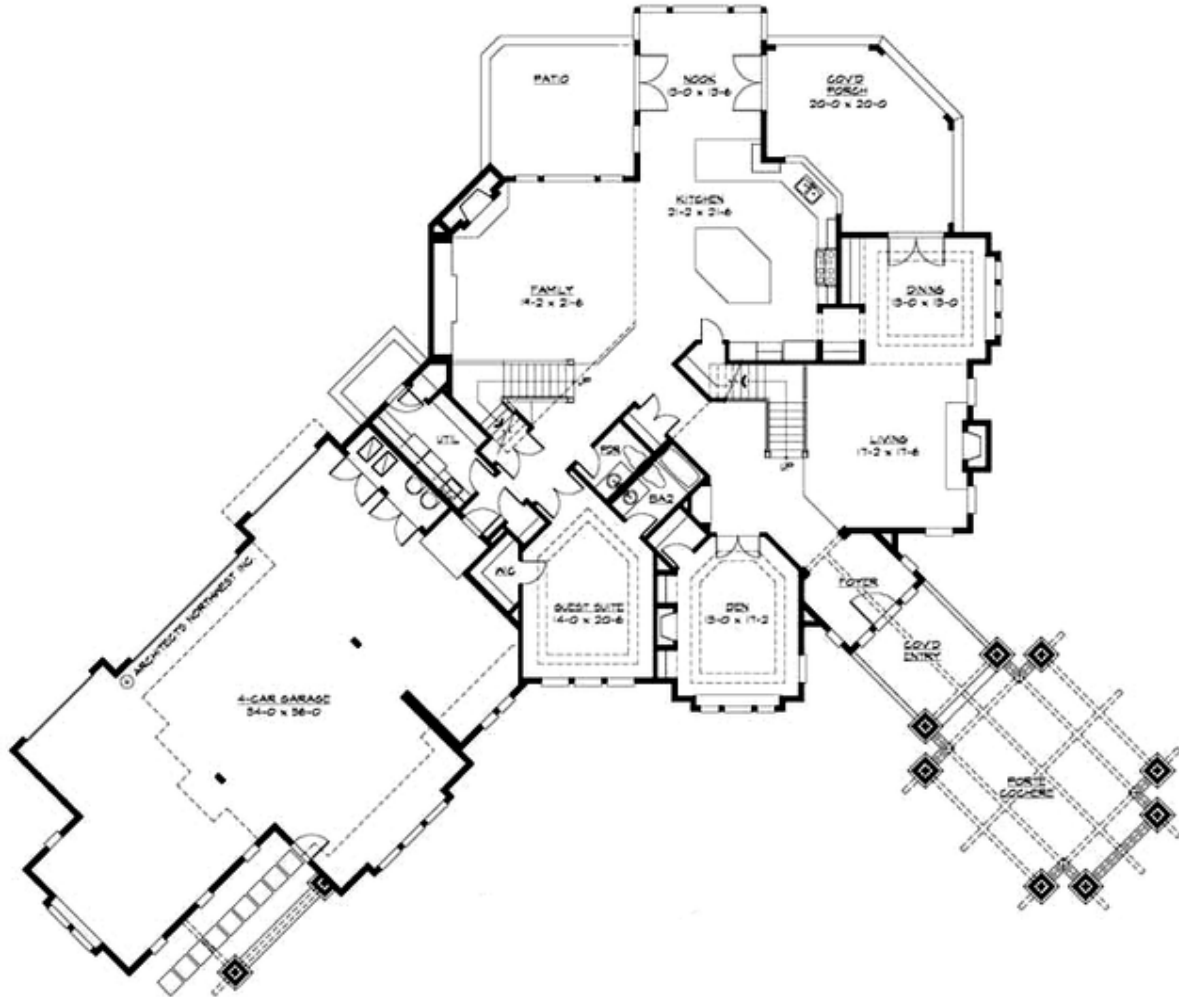
## WHISTLER COVE - PLAN M5730A4RA-1

Total Area: 6275 sq. ft.  
Garage Area: 1700 sq. ft.  
Garage Area: 1700 sq. ft.  
Garage Size: 4  
Stories: 2  
Bedrooms: 5  
Full Baths: 4  
Half Baths: 1  
Width: 124'-0"  
Depth: 104'-0"  
Height: 28'-6"  
Foundation: Crawl Space



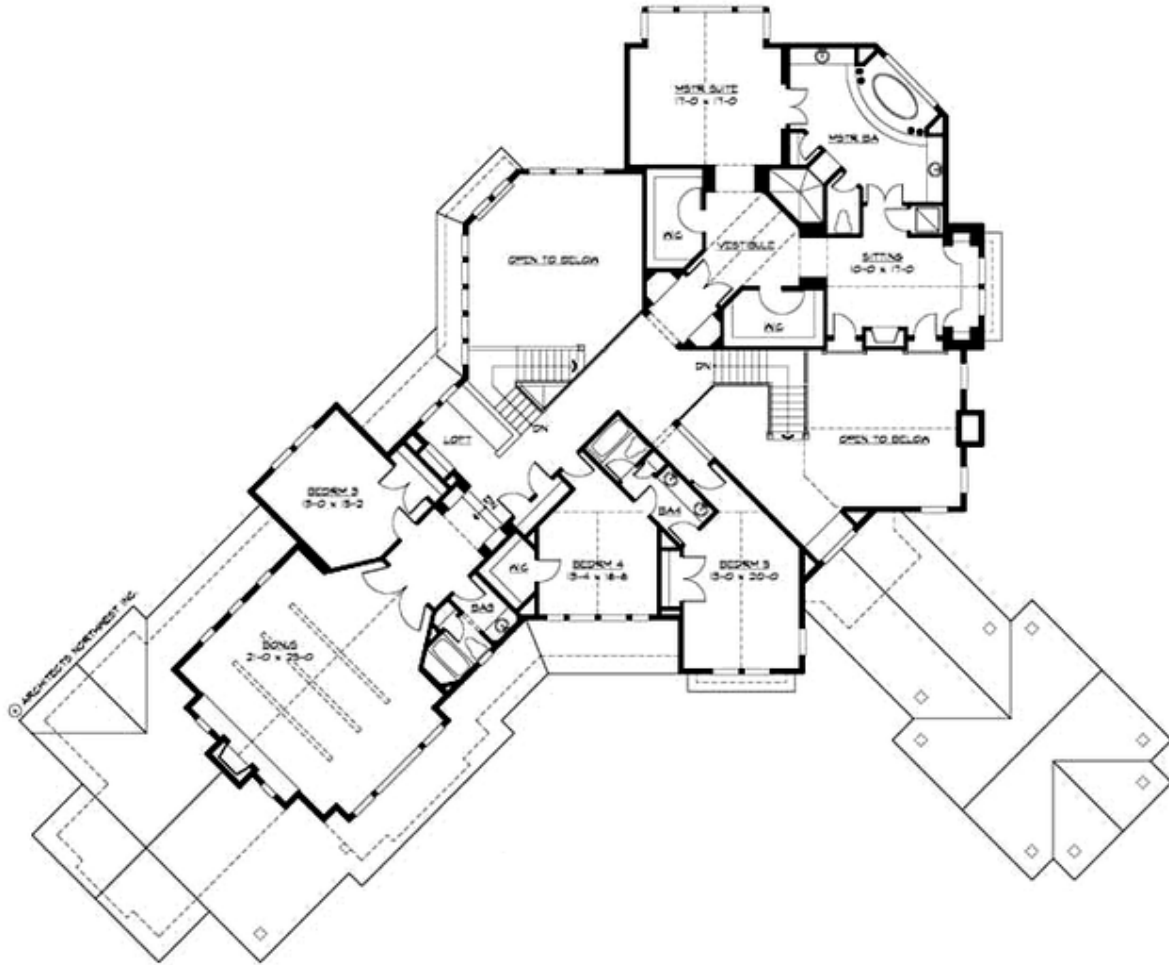
## WHISTLER COVE - PLAN M5730A4RA-1

### MAIN FLOOR



# WHISTLER COVE - PLAN M5730A4RA-1

## UPPER FLOOR





## WHISTLER COVE - PLAN M5730A4RA-1

### PLAN DETAILS

#### Area Summary

Total Area: 6275 sq. ft.  
Main Floor: 3065 sq. ft.  
Upper Floor: 3210 sq. ft.  
Garage Floor: 1700 sq. ft.

#### General Information

Stories: 2  
Width: 124'-0"  
Depth: 104'-0"  
Height: 28'-6"

#### Architectural Style

Craftsman  
Lodge  
Northwest

#### Number of Rooms

Bedrooms: 5  
Full Baths: 4  
Half Baths: 1

#### Garage

Garage Size: 4  
Garage Door Location: Rear  
Garage Type: Angled

#### Roof Pitches

Primary: 6:12

#### Wall Heights

Main: 9'-0"  
Upper: 9'-0"  
3rd Floor: 0'-0"  
Lower: 0'-0"

#### Foundation Type

Crawl Space

#### Roof Framing

Combination

#### Floor Load

Live (lbs): 40 PSF  
Dead (lbs): 10 PSF

#### Roof Load

Live (lbs): 25 PSF  
Dead (lbs): 15 PSF  
Wind: 85 MPH

#### Design Features

- Bonus Space @ Upper Floor
- Den/Office
- Laundry Room @ Main & Upper Floor
- Living & Family Room
- Master Bedroom @ Upper Floor Rear
- Rear Porch
- View Lot - Rear