



## WILLOWCREST - PLAN M5444A3F-0

Total Area: 5444 sq. ft.  
Garage Area: 841 sq. ft.  
Garage Size: 3  
Stories: 2  
Bedrooms: 4  
Full Baths: 4  
Half Baths: 2  
Width: 67'-0"  
Depth: 88'-0"  
Height: 31'-6"  
Foundation: Crawl Space



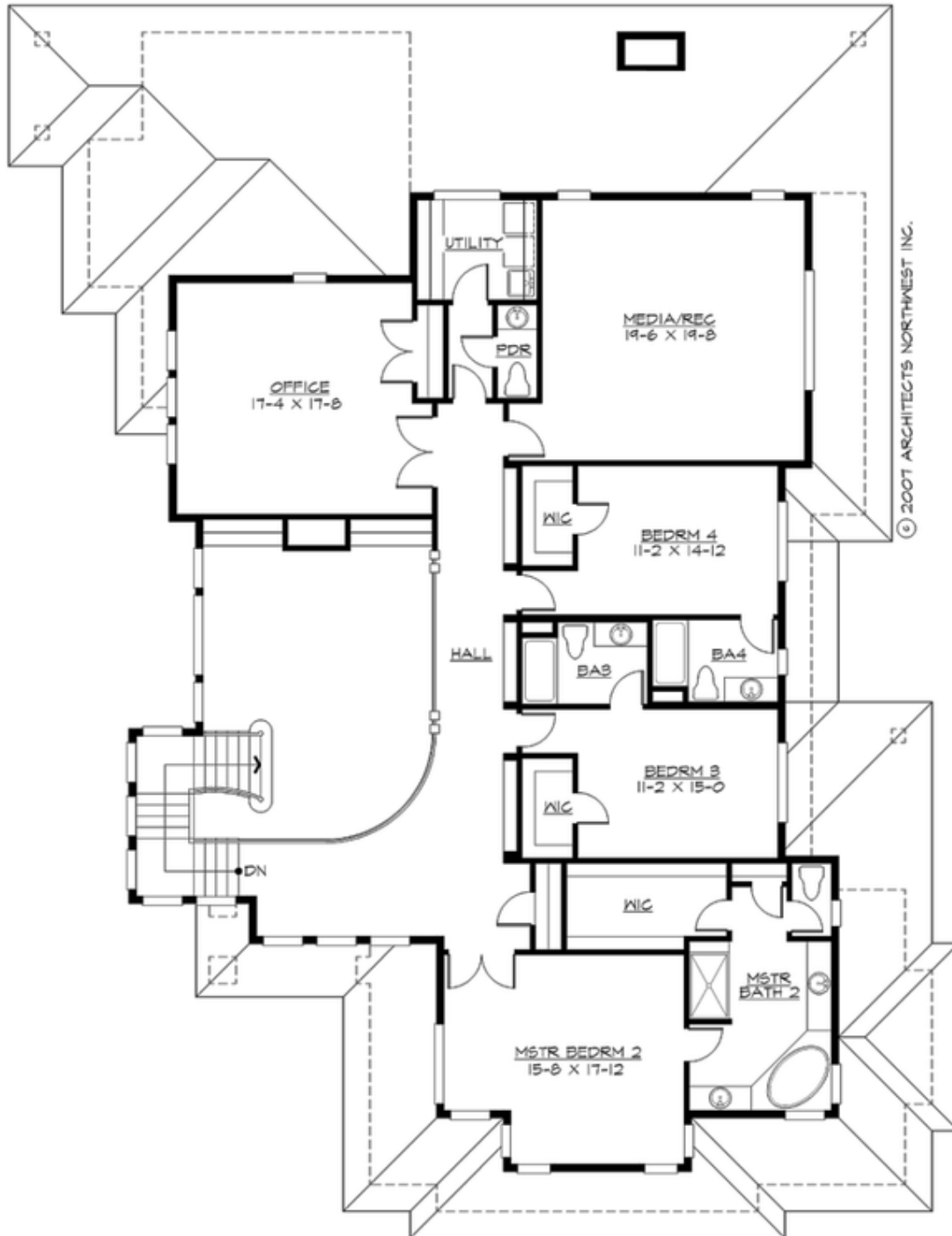
This floor plan shows a single-story residence featuring a large 3-CAR GARAGE (23-0 X 41-0) at the rear. The main living area includes a FAMILY room (15-8 X 21-2) with a fireplace and access to a PATIO, a NOOK (6-2 X 11-2), and a KITCHEN (15-6 X 23-2). A central HALL connects the living areas to a LIVING room (13-6 X 17-2), a FOYER with stairs leading UP, an ENTRY, and a PDR. The private quarters consist of a MSTR BEDRM (17-8 X 19-0) with a closet, a MSTR BATH, and a second BATH. There are three additional PATIOS: one off the front patio, one off the family room, and one off the dining area. A TRASH enclosure is located near the garage entrance.

Willowcrest - Plan M5444A3F-0 :: Page 2 of 6



**WILLOWCREST - PLAN M5444A3F-0**

**UPPER FLOOR**







## WILLOWCREST - PLAN M5444A3F-0

### PLAN DETAILS

#### Area Summary

Total Area: 5444 sq. ft.  
Main Floor: 2963 sq. ft.  
Upper Floor: 2481 sq. ft.  
Garage Floor: 841 sq. ft.

#### General Information

Stories: 2  
Width: 67'-0"  
Depth: 88'-0"  
Height: 31'-6"

#### Architectural Style

Contemporary  
Modern  
Prarie

#### Number of Rooms

Bedrooms: 4  
Full Baths: 4  
Half Baths: 2

#### Garage

Garage Size: 3  
Garage Door Location: Front

#### Roof Pitches

Primary: 6:12  
Secondary: 4:12

#### Wall Heights

Main: 10'-0"  
Upper: 9'-0"  
3rd Floor: 0'-0"  
Lower: 0'-0"

#### Foundation Type

Crawl Space

#### Roof Framing

Trusses

#### Floor Load

Live (lbs): 40 PSF  
Dead (lbs): 10 PSF

#### Roof Load

Live (lbs): 25 PSF  
Dead (lbs): 15 PSF  
Wind: 85 MPH

#### Design Features

- Bonus Space @ Upper Floor
- Den/Office
- Laundry Room @ Upper Floor
- Living & Family Room
- Luxury Plan
- Master Bedroom @ Main Floor Rear
- Narrow Lot
- Rear Porch