



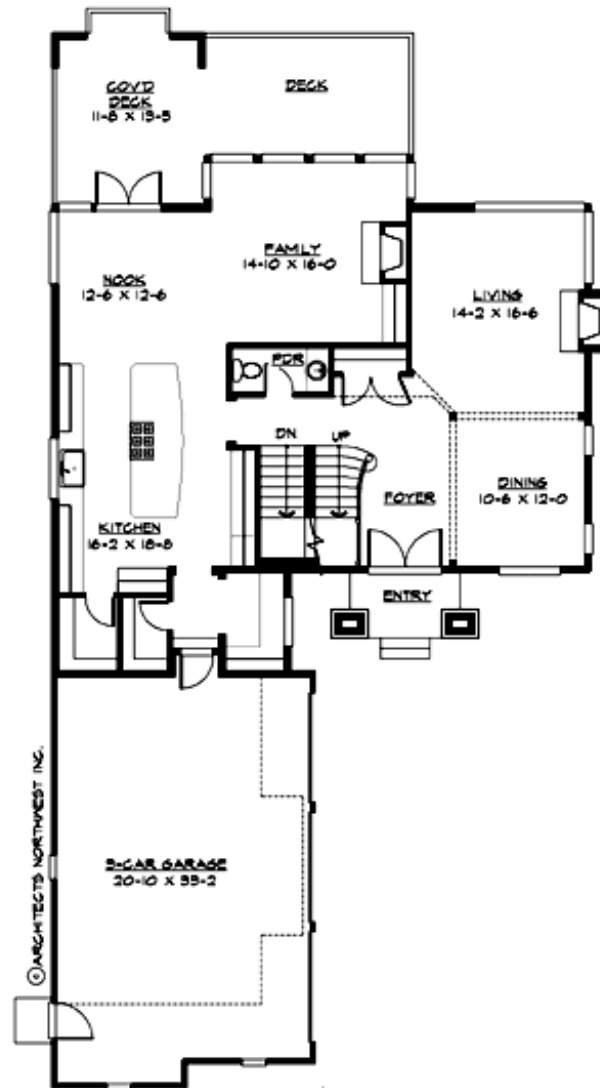
## WEDGEWOOD - PLAN M5003A3S-0DB

Total Area: 4922 sq. ft.  
Garage Area: 707 sq. ft.  
Garage Area: 707 sq. ft.  
Garage Size: 3  
Stories: 3  
Bedrooms: 5  
Full Baths: 4  
Half Baths: 1  
Width: 44'-0"  
Depth: 86'-0"  
Height: 25'-6"  
Foundation: Daylight Basement



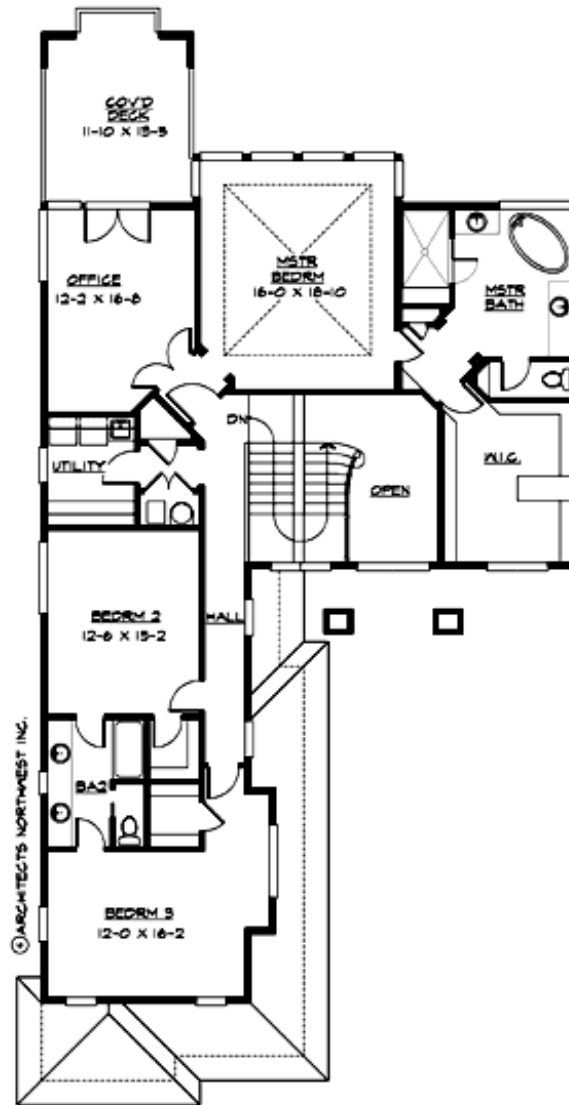
## WEDGEWOOD - PLAN M5003A3S-0DB

### MAIN FLOOR



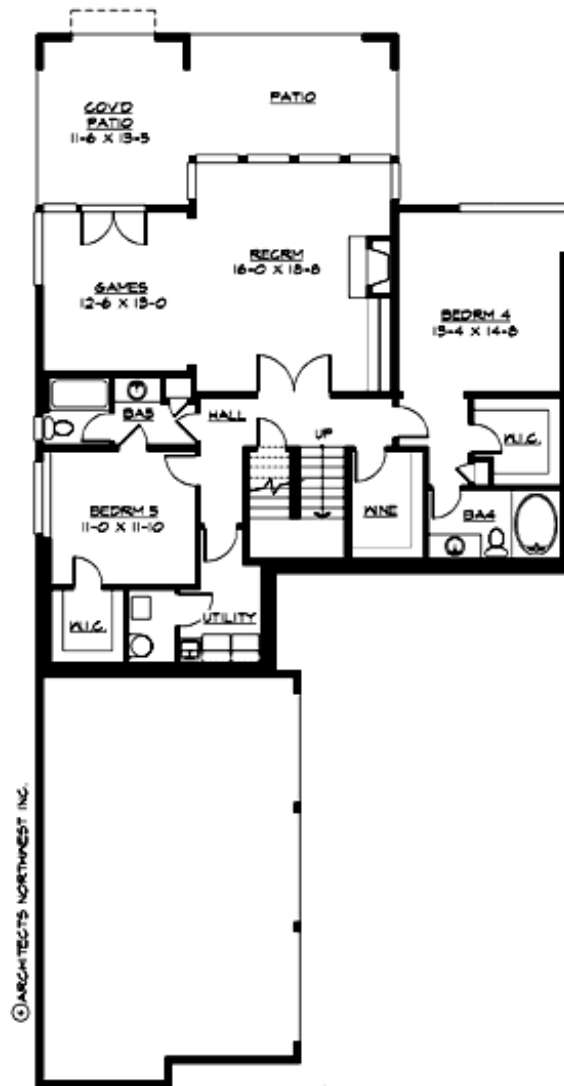
## WEDGEWOOD - PLAN M5003A3S-0DB

### UPPER FLOOR



## WEDGEWOOD - PLAN M5003A3S-0DB

### LOWER FLOOR





## WEDGEWOOD - PLAN M5003A3S-0DB

### PLAN DETAILS

#### Area Summary

Total Area:	4922 sq. ft.
Main Floor:	1547 sq. ft.
Upper Floor:	1821 sq. ft.
Lower Floor:	1554 sq. ft.
Garage Floor:	707 sq. ft.

#### General Information

Stories:	3
Width:	44'-0"
Depth:	86'-0"
Height:	25'-6"

#### Architectural Style

Contemporary  
Prairie  
Shingle

#### Number of Rooms

Bedrooms:	5
Full Baths:	4
Half Baths:	1

#### Garage

Garage Size:	3
Garage Door Location:	Side

#### Roof Pitches

Primary:	4:12
----------	------

#### Wall Heights

Main:	10'-0"
Upper:	9'-0"
3rd Floor:	0'-0"
Lower:	10'-0"

#### Foundation Type

Daylight Basement

#### Roof Framing

Trusses

#### Floor Load

Live (lbs):	40 PSF
Dead (lbs):	10 PSF

#### Roof Load

Live (lbs):	25 PSF
Dead (lbs):	15 PSF
Wind:	85 MPH

#### Design Features

- Bonus Space @ Lower Floor
- Den/Office
- Laundry Room @ Upper & Lower Floor
- Living & Family Room
- Master Bedroom @ Upper Floor Rear
- Narrow Lot