



CEDAR GROVE - PLAN M4100A3F-0

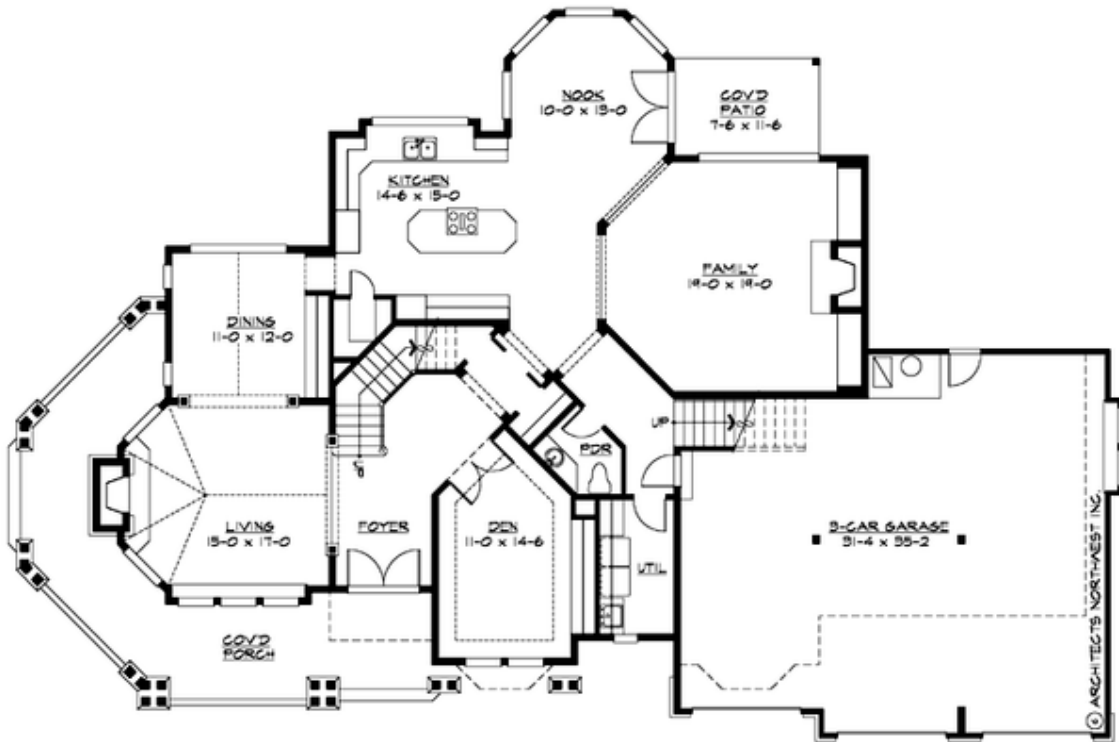
Total Area: 4220 sq. ft.
Garage Area: 1065 sq. ft.
Garage Size: 3
Stories: 2
Bedrooms: 4
Full Baths: 3
Half Baths: 1
Width: 90'-0"
Depth: 60'-0"
Height: 32'-0"
Foundation: Crawl Space



Perfect for a Forest of Fairway Lot. A Craftsman masterpiece, the Cedar Grove is perfect for a forest or fairway lot. Its wrap-around porch adds warmth to the facade and is a great place to watch the world go by. The popular family living layout features vaulted formal living and dining rooms off the volume foyer, complemented by a spacious informal living area with a covered patio that is ideal for outdoor dining. The angled front stair leads directly to the luxury master suite with its private sitting room and grand bath. A second stair provides quiet access to the children's bedrooms with connecting bath, guest suite with private bath and large vaulted bonus room. The romantic facade and easy-living floor plan of the Cedar Grove was recognized as Best Published Plan at the 2007 AIBD Design Competition.

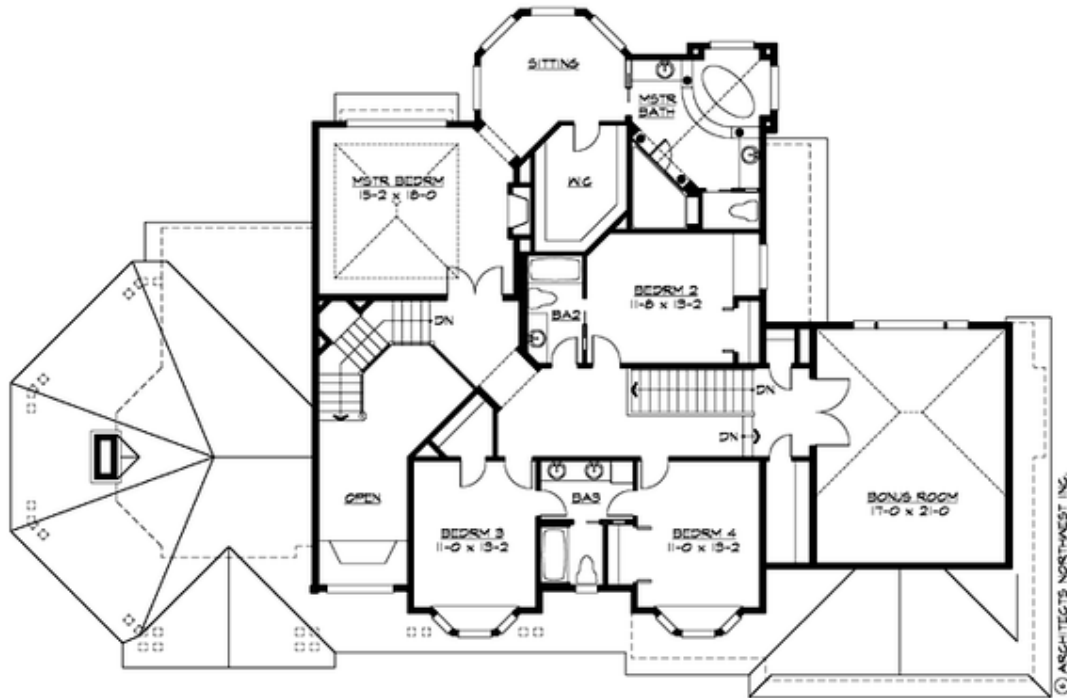
CEDAR GROVE - PLAN M4100A3F-0

MAIN FLOOR



CEDAR GROVE - PLAN M4100A3F-0

UPPER FLOOR





CEDAR GROVE - PLAN M4100A3F-0

PLAN DETAILS

Area Summary

Total Area: 4220 sq. ft.
Main Floor: 2075 sq. ft.
Upper Floor: 2145 sq. ft.
Garage Floor: 1065 sq. ft.

General Information

Stories: 2
Width: 90'-0"
Depth: 60'-0"
Height: 32'-0"

Architectural Style

Craftsman
Northwest
Shingle

Number of Rooms

Bedrooms: 4
Full Baths: 3
Half Baths: 1

Garage

Garage Size: 3
Garage Door Location: Front

Roof Pitches

Primary: 8:12

Wall Heights

Main: 9'-0"
Upper: 8'-0"
3rd Floor: 0'-0"
Lower: 0'-0"

Foundation Type

Crawl Space

Roof Framing

Trusses

Floor Load

Live (lbs): 40 PSF
Dead (lbs): 10 PSF

Roof Load

Live (lbs): 25 PSF
Dead (lbs): 15 PSF
Wind: 85 MPH

Design Features

- Bonus Space @ Upper Floor
- Den/Office
- Laundry Room @ Main Floor
- Living & Family Room
- Master Bedroom @ Upper Floor Rear
- View Lot - Rear
- Wide Lot
- Wrap-Around Porch