



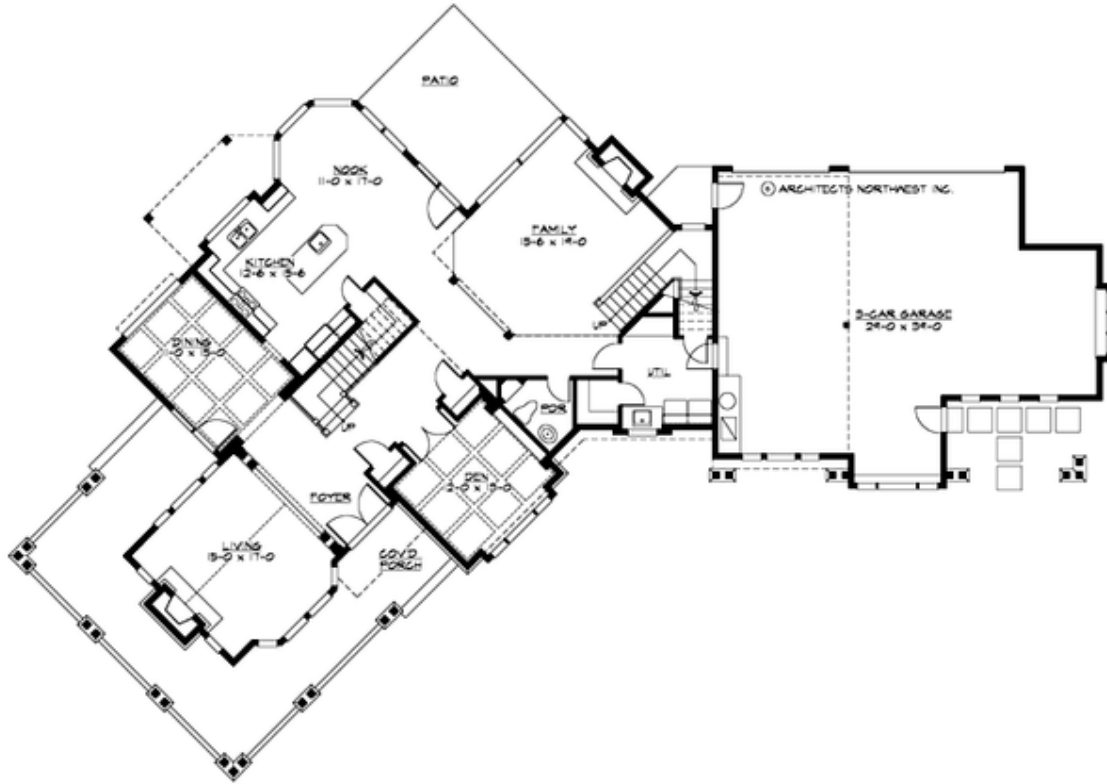
## MOUNTAIN AIRE - PLAN M3645A3RA-0

Total Area: 3645 sq. ft.  
Garage Area: 1060 sq. ft.  
Garage Size: 3  
Stories: 2  
Bedrooms: 3  
Full Baths: 2  
Half Baths: 1  
Width: 113'-0"  
Depth: 70'-0"  
Height: 29'-0"  
Foundation: Crawl Space



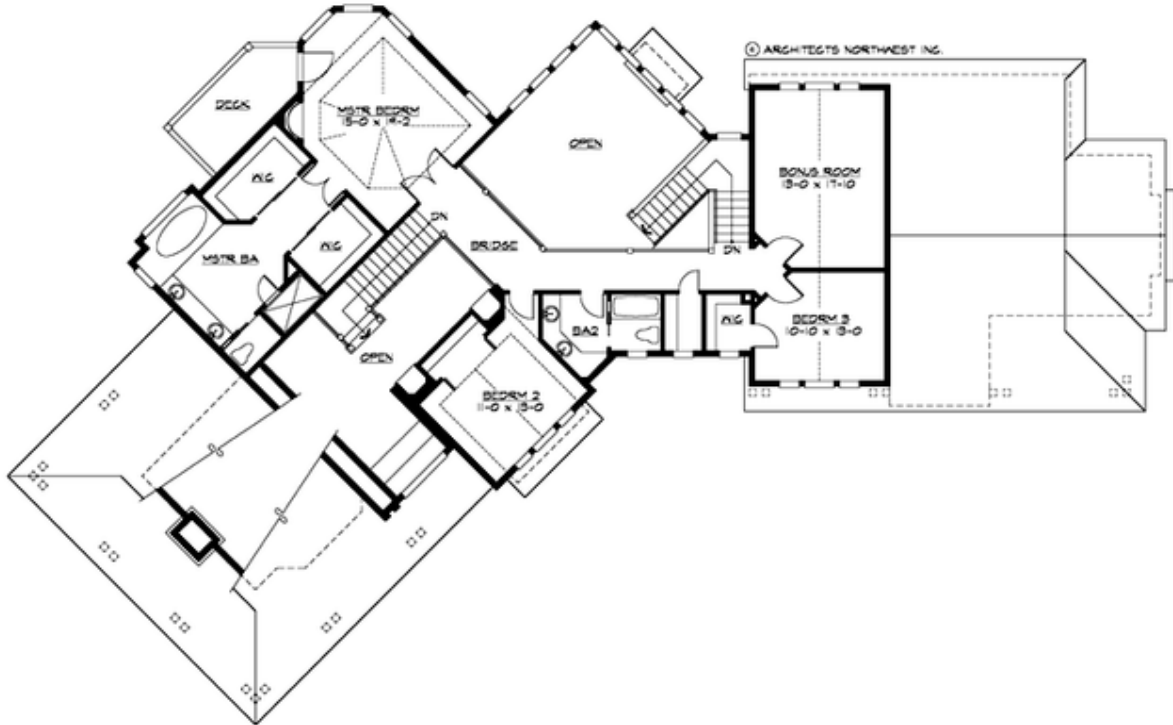
## MOUNTAIN AIRE - PLAN M3645A3RA-0

### MAIN FLOOR



## MOUNTAIN AIRE - PLAN M3645A3RA-0

### UPPER FLOOR





## MOUNTAIN AIRE - PLAN M3645A3RA-0

### PLAN DETAILS

#### Area Summary

Total Area:	3645 sq. ft.
Main Floor:	2105 sq. ft.
Upper Floor:	1540 sq. ft.
Garage Floor:	1060 sq. ft.

#### General Information

Stories:	2
Width:	113'-0"
Depth:	70'-0"
Height:	29'-0"

#### Architectural Style

Craftsman  
Lodge  
Northwest

#### Number of Rooms

Bedrooms:	3
Full Baths:	2
Half Baths:	1

#### Garage

Garage Size:	3
Garage Door Location:	Rear
Garage Type:	Angled

#### Roof Pitches

Primary:	8:12
----------	------

#### Wall Heights

Main:	9'-0"
Upper:	8'-0"
3rd Floor:	0'-0"
Lower:	0'-0"

#### Foundation Type

Crawl Space

#### Roof Framing

Trusses

#### Floor Load

Live (lbs):	40 PSF
Dead (lbs):	10 PSF

#### Roof Load

Live (lbs):	25 PSF
Dead (lbs):	15 PSF
Wind:	85 MPH

#### Design Features

- Award Winning Design
- Bonus Space @ Upper Floor
- Den/Office
- Laundry Room @ Main Floor
- Living & Family Room
- Master Bedroom @ Upper Floor Rear
- Wide Lot
- Wrap-Around Porch