



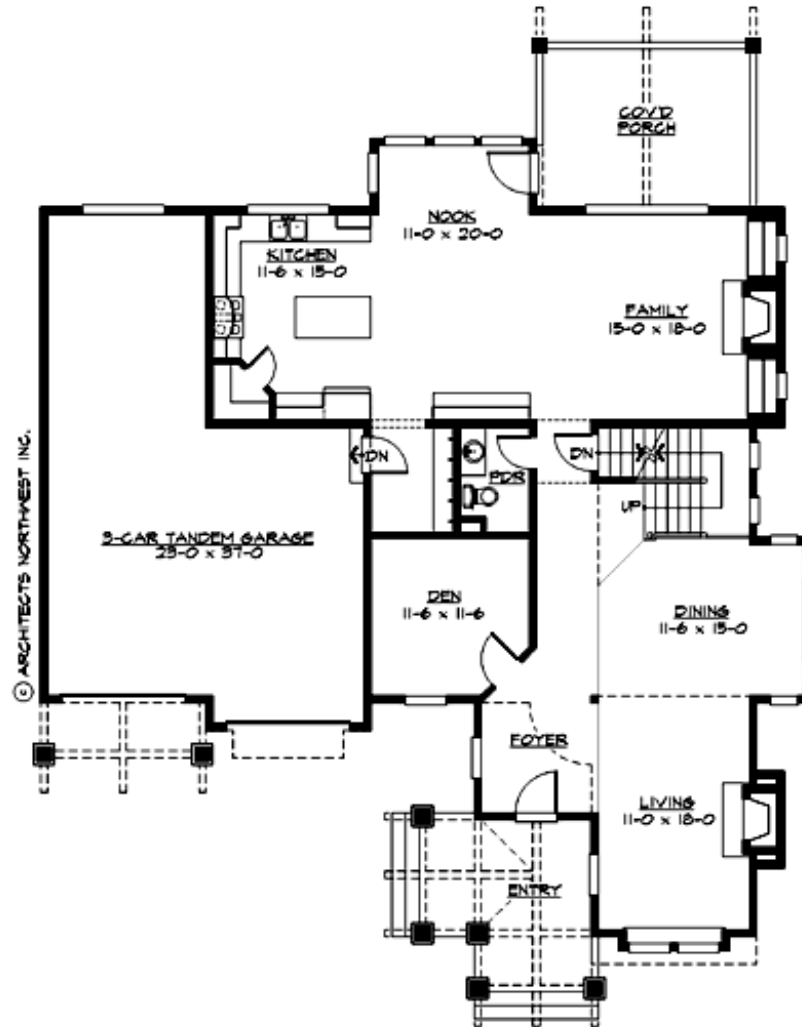
## BREAKWATER BAY - PLAN M3605A3FT-0DB

Total Area: 4510 sq. ft.  
Garage Area: 695 sq. ft.  
Garage Area: 695 sq. ft.  
Garage Size: 3  
Stories: 3  
Bedrooms: 5  
Full Baths: 4  
Half Baths: 1  
Width: 56'-6"  
Depth: 69'-6"  
Height: 27'-6"  
Foundation: Daylight Basement



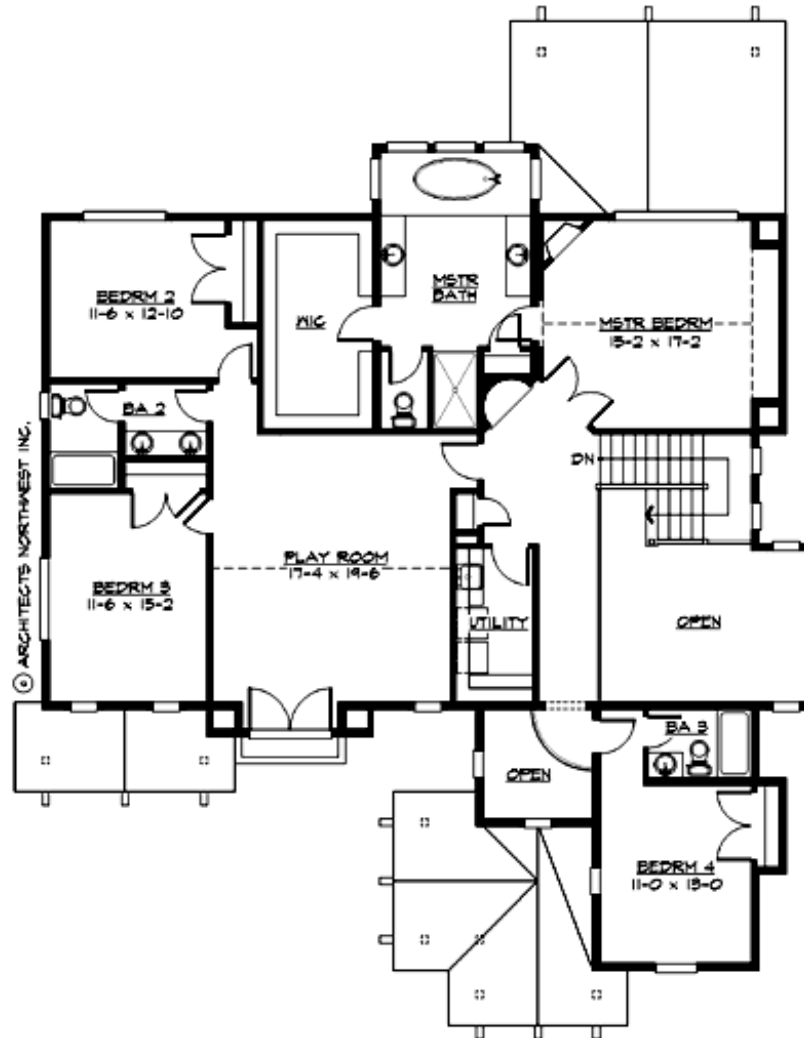
## BREAKWATER BAY - PLAN M3605A3FT-0DB

### MAIN FLOOR



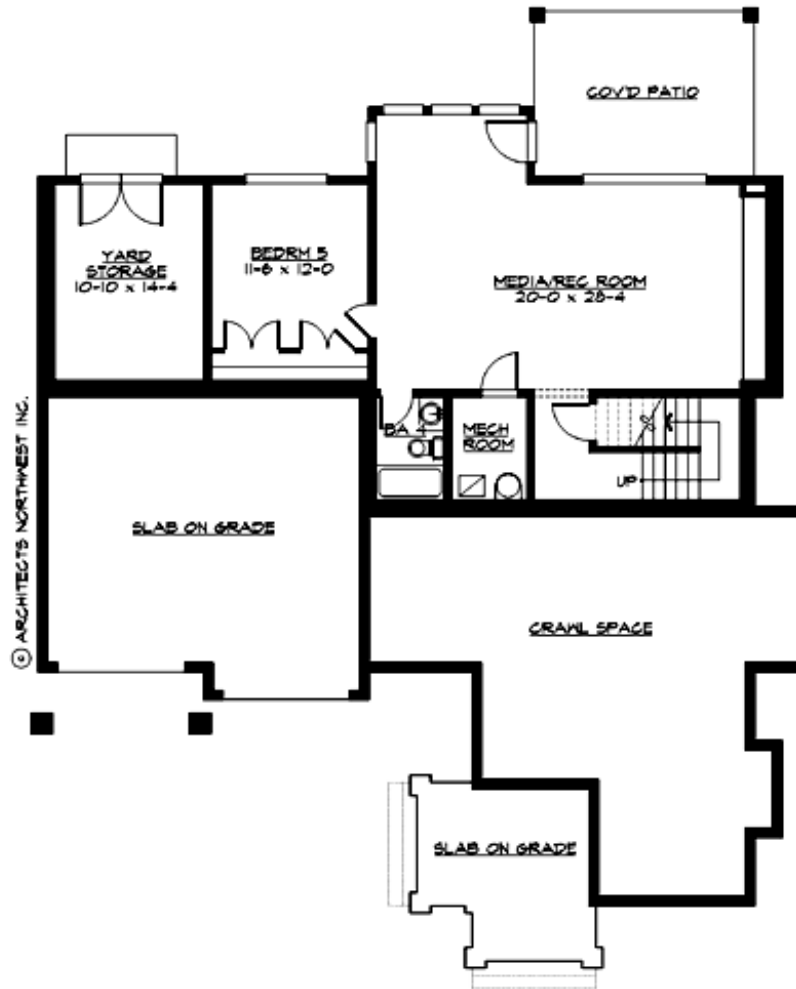
## BREAKWATER BAY - PLAN M3605A3FT-0DB

### UPPER FLOOR



## BREAKWATER BAY - PLAN M3605A3FT-0DB

### LOWER FLOOR





## BREAKWATER BAY - PLAN M3605A3FT-0DB

### PLAN DETAILS

#### Area Summary

Total Area:	4510 sq. ft.
Main Floor:	1605 sq. ft.
Upper Floor:	2000 sq. ft.
Lower Floor:	695 sq. ft.
Garage Floor:	695 sq. ft.

#### General Information

Stories:	3
Width:	56'-6"
Depth:	69'-6"
Height:	27'-6"

#### Architectural Style

Craftsman  
Lodge  
Shingle

#### Number of Rooms

Bedrooms:	5
Full Baths:	4
Half Baths:	1

#### Garage

Garage Size:	3
Garage Door Location:	Front
Garage Type:	Tandem

#### Roof Pitches

Primary:	6:12
----------	------

#### Wall Heights

Main:	9'-0"
Upper:	8'-0"
3rd Floor:	0'-0"
Lower:	9'-0"

#### Foundation Type

Daylight Basement

#### Roof Framing

Trusses

#### Floor Load

Live (lbs):	40 PSF
Dead (lbs):	10 PSF

#### Roof Load

Live (lbs):	25 PSF
Dead (lbs):	15 PSF
Wind:	85 MPH

#### Design Features

- Bonus Space @ Upper Floor & Lower Floor
- Den/Office
- Laundry Room @ Upper Floor
- Living & Family Room
- Master Bedroom @ Upper Floor Front
- Narrow Lot
- Rear Porch