

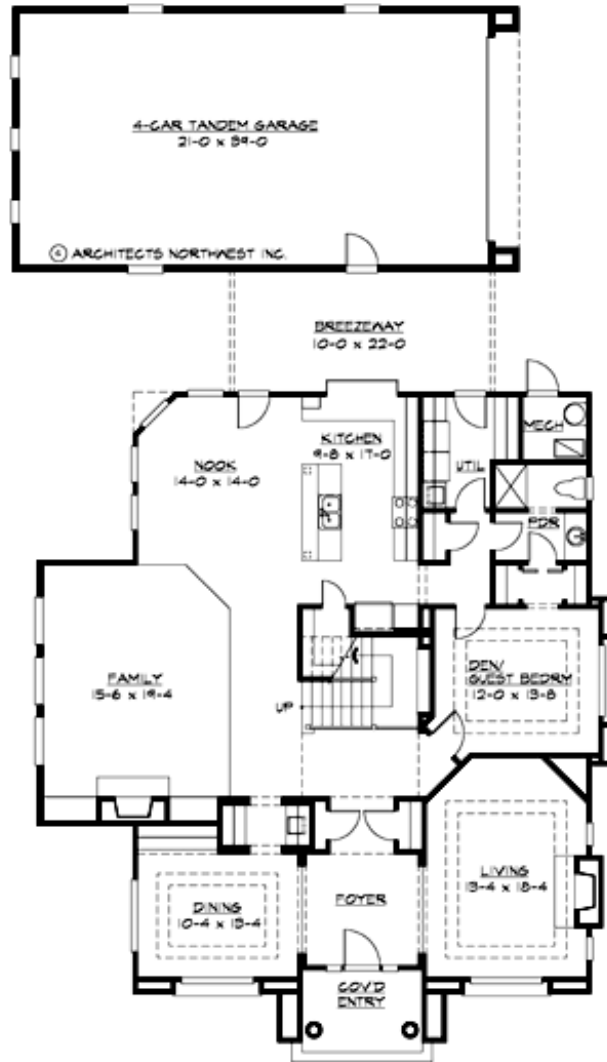
## ROSARIO STRAIT - PLAN M3550B4RD-0

Total Area: 3550 sq. ft.  
Garage Area: 836 sq. ft.  
Garage Area: 836 sq. ft.  
Garage Size: 4  
Stories: 2  
Bedrooms: 3  
Full Baths: 3  
Width: 48'-0"  
Depth: 54'-0"  
Height: 26'-0"  
Foundation: Crawl Space



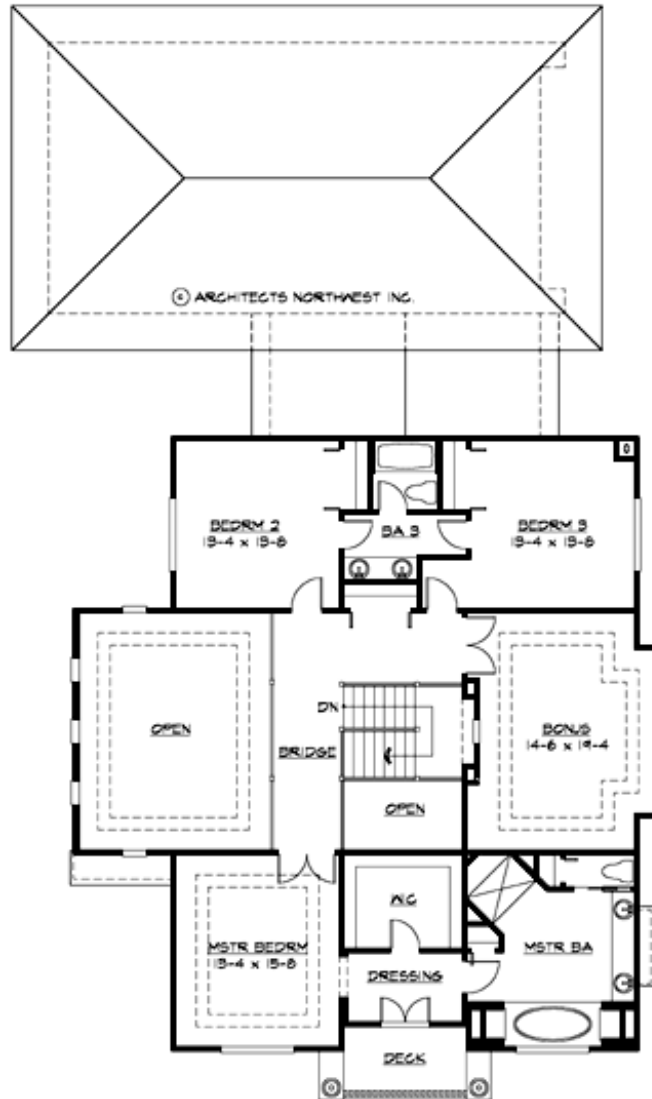
## ROSARIO STRAIT - PLAN M3550B4RD-0

### MAIN FLOOR



## ROSARIO STRAIT - PLAN M3550B4RD-0

### UPPER FLOOR





## ROSARIO STRAIT - PLAN M3550B4RD-0

### PLAN DETAILS

#### Area Summary

Total Area:	3550 sq. ft.
Main Floor:	1970 sq. ft.
Upper Floor:	1580 sq. ft.
Garage Floor:	836 sq. ft.

#### General Information

Stories:	2
Width:	48'-0"
Depth:	54'-0"
Height:	26'-0"

#### Architectural Style

Chateau  
European  
Traditional

#### Number of Rooms

Bedrooms:	3
Full Baths:	3

#### Garage

Garage Size:	4
Garage Door Location:	Rear
Garage Type:	Detached

#### Roof Pitches

Primary:	4:12
----------	------

#### Wall Heights

Main:	9'-0"
Upper:	9'-0"
3rd Floor:	0'-0"
Lower:	0'-0"

#### Foundation Type

Crawl Space

#### Roof Framing

Trusses

#### Floor Load

Live (lbs):	40 PSF
Dead (lbs):	10 PSF

#### Roof Load

Live (lbs):	25 PSF
Dead (lbs):	15 PSF
Wind:	85 MPH

#### Design Features

- Bonus Space @ Upper Floor
- Den/Office
- Laundry Room @ Main Floor
- Living & Family Room
- Master Bedroom @ Upper Floor Front
- Narrow Lot