



## CASCADIA - PLAN M3210A3S-0

Total Area: 3210 sq. ft.  
Garage Area: 750 sq. ft.  
Garage Area: 750 sq. ft.  
Garage Size: 3  
Stories: 2  
Bedrooms: 4  
Full Baths: 2  
Half Baths: 1  
Width: 60'-0"  
Depth: 58'-0"  
Height: 26'-6"  
Foundation: Crawl Space

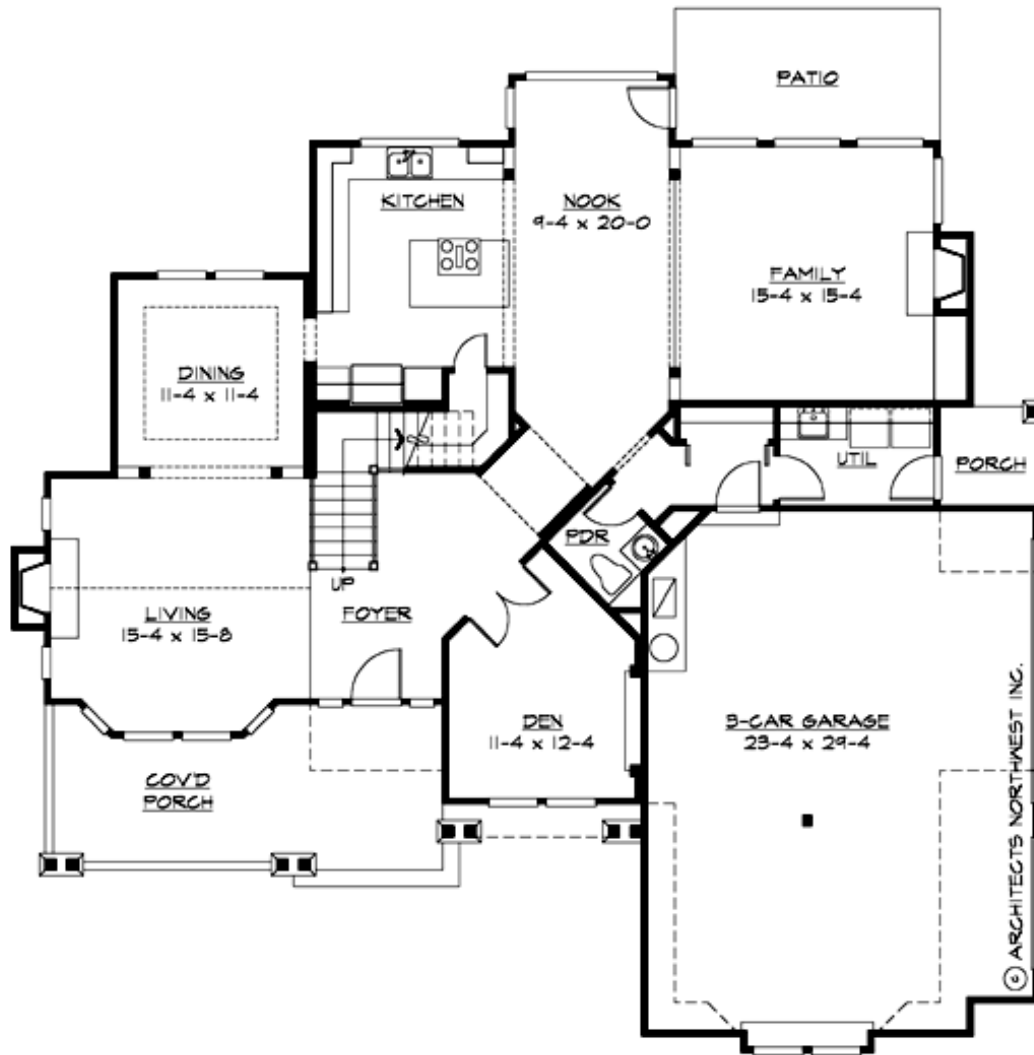


### ***Bold Craftsman Details Create Exciting Exterior.***

With its welcoming front porch and elegant rooflines, the Cascadia offers a striking example of current Craftsman design. Rustic shingles and rugged stone create a dynamic contrast with brilliant white-trimmed gables, bays, and brackets. The plan features a large, vaulted living room and atray-ceiling dining room, with a large work-at-home den off the dramatic 2-story foyer. The island kitchen and expandable nook open to the large family room. Upstairs, a grand master suite, three secondary bedrooms, a compartmented bath and a vaulted bonus room complete the layout.

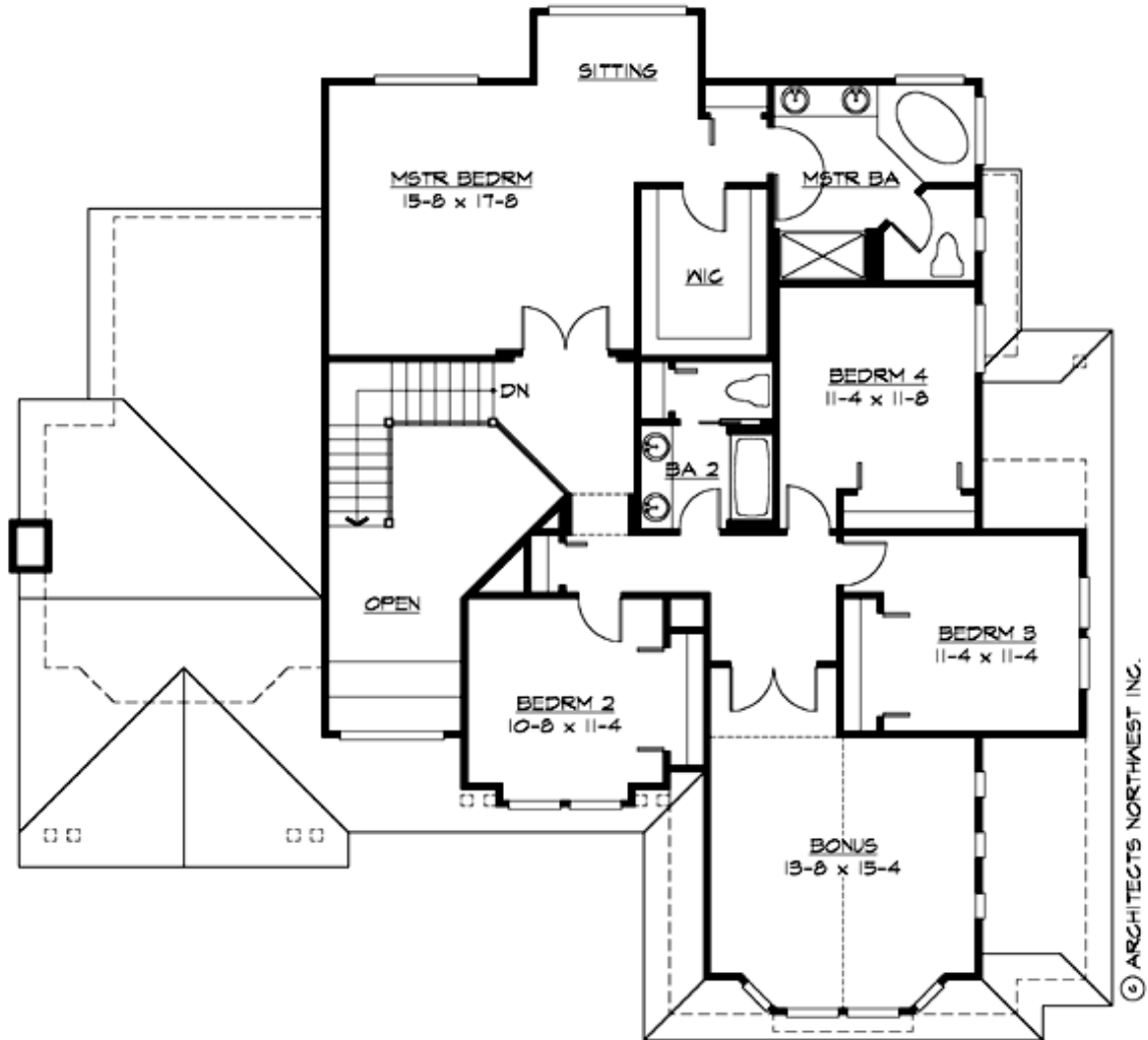
## CASCADIA - PLAN M3210A3S-0

### MAIN FLOOR



## CASCADIA - PLAN M3210A3S-0

### UPPER FLOOR





## CASCADIA - PLAN M3210A3S-0

### PLAN DETAILS

#### Area Summary

Total Area:	3210 sq. ft.
Main Floor:	1620 sq. ft.
Upper Floor:	1590 sq. ft.
Garage Floor:	750 sq. ft.

#### General Information

Stories:	2
Width:	60'-0"
Depth:	58'-0"
Height:	26'-6"

#### Architectural Style

Craftsman  
Northwest  
Shingle

#### Number of Rooms

Bedrooms:	4
Full Baths:	2
Half Baths:	1

#### Garage

Garage Size:	3
Garage Door Location:	Side

#### Roof Pitches

Primary:	8:12
----------	------

#### Wall Heights

Main:	9'-0"
Upper:	8'-0"
3rd Floor:	0'-0"
Lower:	0'-0"

#### Foundation Type

Crawl Space

#### Roof Framing

Trusses

#### Floor Load

Live (lbs):	40 PSF
Dead (lbs):	10 PSF

#### Roof Load

Live (lbs):	25 PSF
Dead (lbs):	15 PSF
Wind:	85 MPH

#### Design Features

- Bonus Space @ Upper Floor
- Den/Office
- Front Porch
- Laundry Room @ Main Floor
- Living & Family Room
- Master Bedroom @ Upper Floor Rear
- View Lot - Rear