

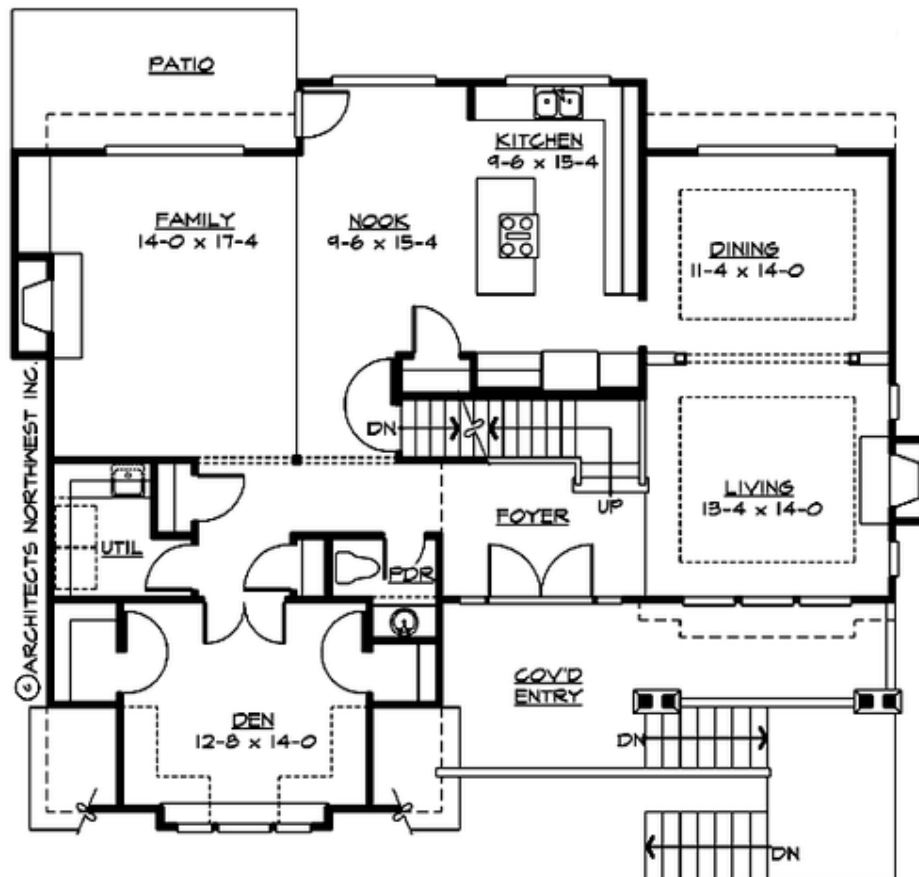
PINE BLUFF - PLAN M3155A2FU-0

Total Area: 3155 sq. ft.
Garage Area: 543 sq. ft.
Garage Area: 543 sq. ft.
Garage Size: 2
Stories: 3
Bedrooms: 4
Full Baths: 3
Half Baths: 1
Width: 50'-0"
Depth: 43'-0"
Height: 28'-0"
Foundation: Crawl Space



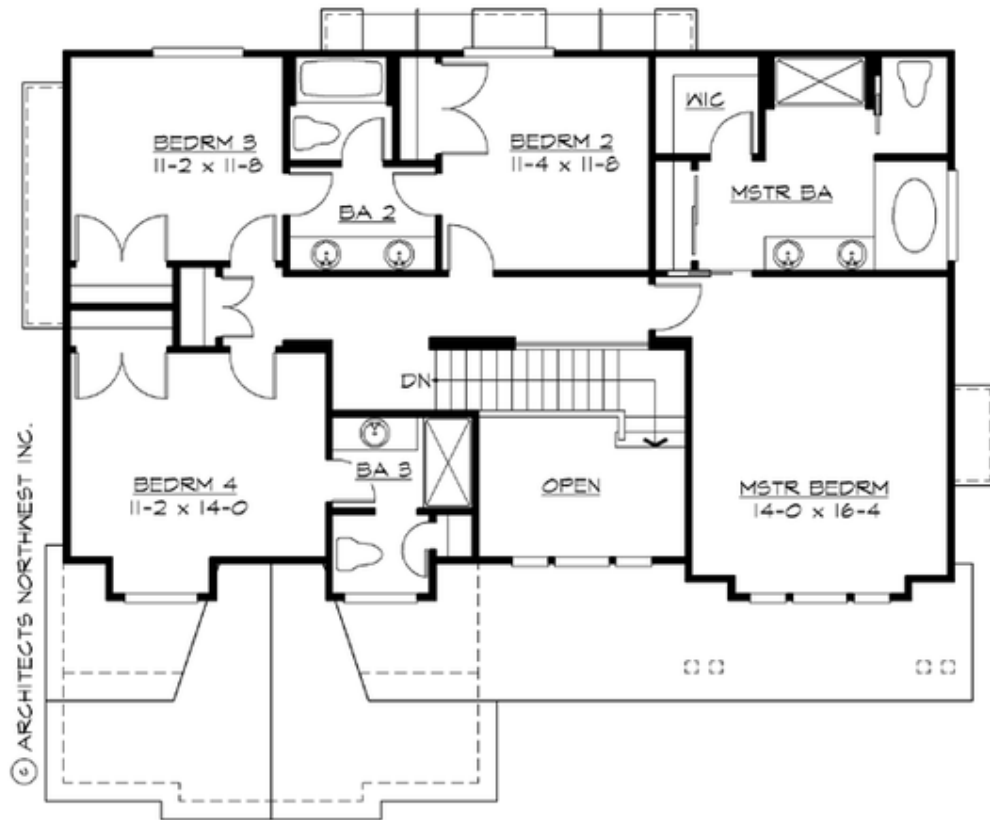
PINE BLUFF - PLAN M3155A2FU-0

MAIN FLOOR



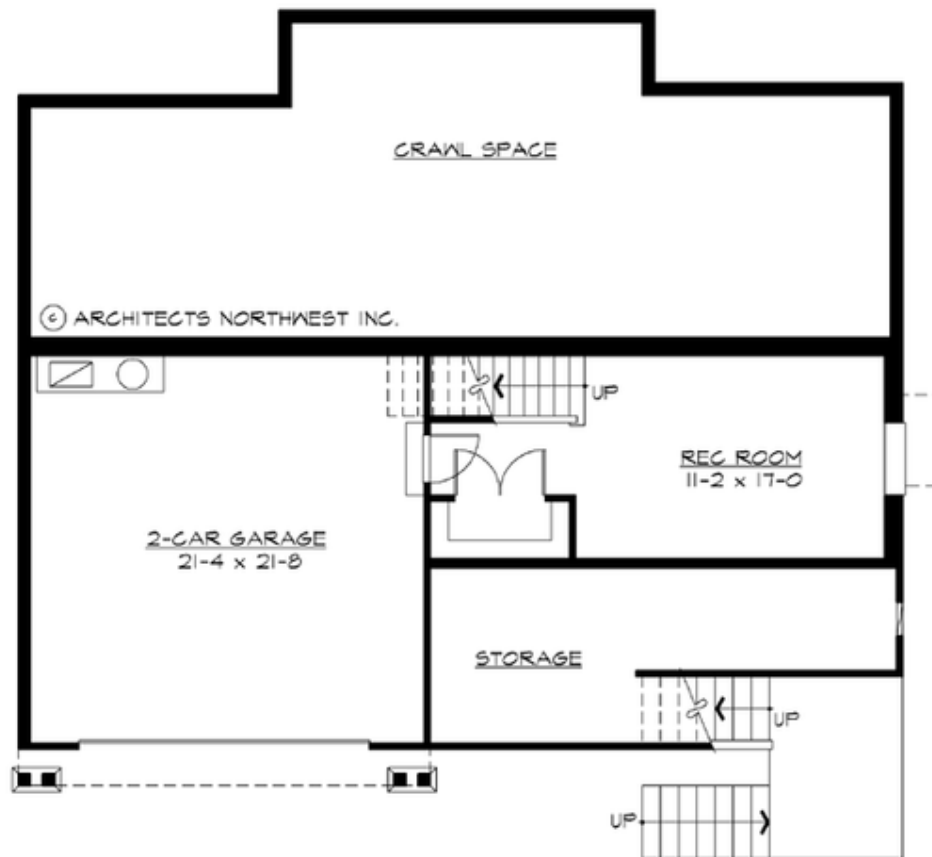
PINE BLUFF - PLAN M3155A2FU-0

UPPER FLOOR



PINE BLUFF - PLAN M3155A2FU-0

LOWER FLOOR





PINE BLUFF - PLAN M3155A2FU-0

PLAN DETAILS

Area Summary

Total Area:	3155 sq. ft.
Main Floor:	1583 sq. ft.
Upper Floor:	1260 sq. ft.
Lower Floor:	312 sq. ft.
Garage Floor:	543 sq. ft.

General Information

Stories:	3
Width:	50'-0"
Depth:	43'-0"
Height:	28'-0"

Architectural Style

Craftsman
Farmhouse
Northwest

Number of Rooms

Bedrooms:	4
Full Baths:	3
Half Baths:	1

Garage

Garage Size:	2
Garage Door Location:	Front
Garage Type:	Under

Roof Pitches

Primary:	8:12
Secondary:	12:12

Wall Heights

Main:	9'-0"
Upper:	8'-0"
3rd Floor:	0'-0"
Lower:	8'-0"

Foundation Type

Crawl Space

Roof Framing

Trusses

Floor Load

Live (lbs):	40 PSF
Dead (lbs):	10 PSF

Roof Load

Live (lbs):	25 PSF
Dead (lbs):	15 PSF
Wind:	85 MPH

Design Features

- Bonus Space @ Lower Floor
- Den/Office
- Front Porch
- Laundry Room @ Main Floor
- Living & Family Room
- Master Bedroom @ Upper Floor Front