



## VANCE - PLAN M3020A2FA-0

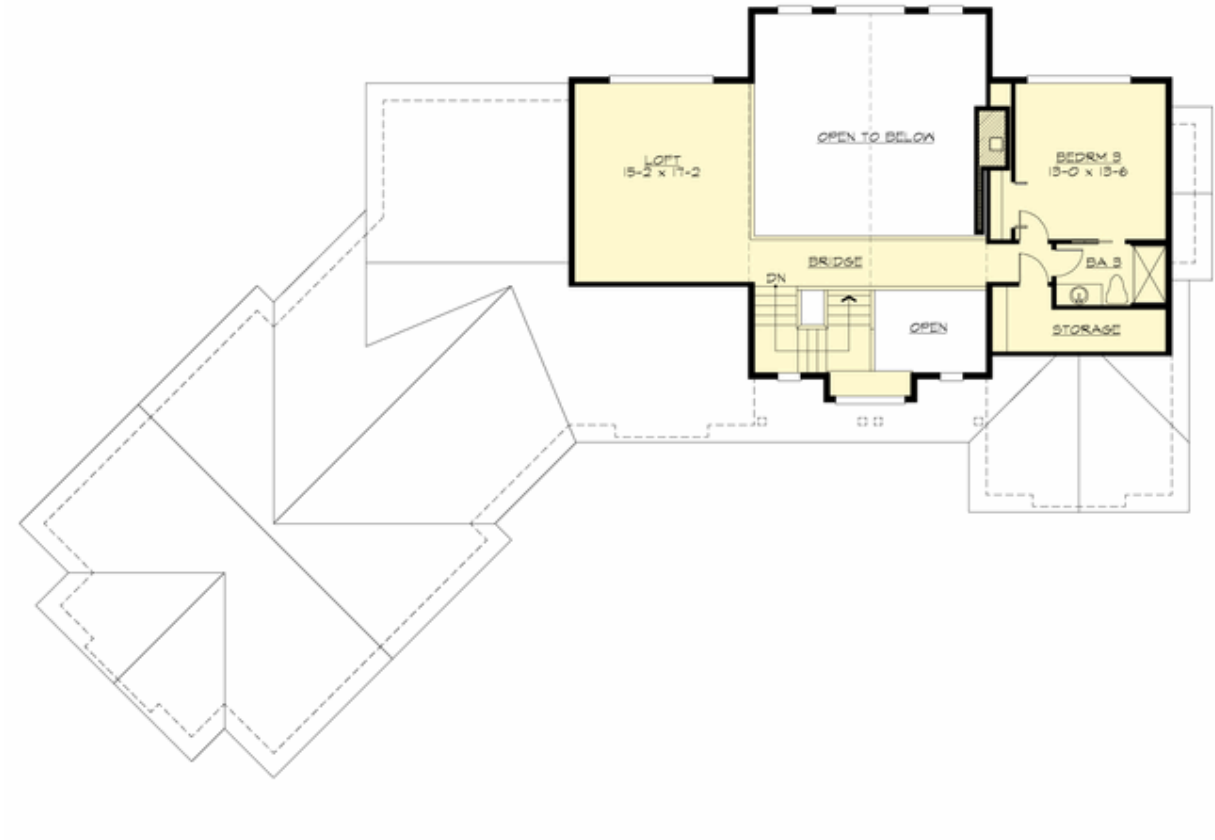
Total Area: 3020 sq. ft.  
Garage Area: 780 sq. ft.  
Garage Area: 780 sq. ft.  
Garage Size: 2  
Stories: 2  
Bedrooms: 3  
Full Baths: 3  
Width: 100'-0"  
Depth: 73'-0"  
Height: 23'-6"  
Foundation: Crawl Space



This floor plan shows a 2-car garage (21'-0" x 29'-0") attached to a main house. The house features a large deck, a great room (20'-0" x 23'-2"), a dining area (13'-2" x 15'-6"), a kitchen (11'-2" x 15'-0"), a pantry, a utility room, and two bedrooms (15'-6" x 13'-0" and 13'-0" x 13'-2"). There are also two bathrooms (BA 1 and BA 2), a master bedroom (13'-0" x 13'-2"), a master bathroom (MSTR BATH), a foyer, and a covered porch. The plan includes various closets (CLO, CLO 2, CLO 3, CLO 4, CLO 5, CLO 6, CLO 7, CLO 8, CLO 9, CLO 10, CLO 11, CLO 12, CLO 13, CLO 14, CLO 15, CLO 16, CLO 17, CLO 18, CLO 19, CLO 20, CLO 21, CLO 22, CLO 23, CLO 24, CLO 25, CLO 26, CLO 27, CLO 28, CLO 29, CLO 30, CLO 31, CLO 32, CLO 33, CLO 34, CLO 35, CLO 36, CLO 37, CLO 38, CLO 39, CLO 40, CLO 41, CLO 42, CLO 43, CLO 44, CLO 45, CLO 46, CLO 47, CLO 48, CLO 49, CLO 50, CLO 51, CLO 52, CLO 53, CLO 54, CLO 55, CLO 56, CLO 57, CLO 58, CLO 59, CLO 60, CLO 61, CLO 62, CLO 63, CLO 64, CLO 65, CLO 66, CLO 67, CLO 68, CLO 69, CLO 70, CLO 71, CLO 72, CLO 73, CLO 74, CLO 75, CLO 76, CLO 77, CLO 78, CLO 79, CLO 80, CLO 81, CLO 82, CLO 83, CLO 84, CLO 85, CLO 86, CLO 87, CLO 88, CLO 89, CLO 90, CLO 91, CLO 92, CLO 93, CLO 94, CLO 95, CLO 96, CLO 97, CLO 98, CLO 99, CLO 100) and a central hallway.

## VANCE - PLAN M3020A2FA-0

### UPPER FLOOR





## VANCE - PLAN M3020A2FA-0

### PLAN DETAILS

#### Area Summary

Total Area: 3020 sq. ft.  
Main Floor: 2270 sq. ft.  
Upper Floor: 750 sq. ft.  
Garage Floor: 780 sq. ft.

#### General Information

Stories: 2  
Width: 100'-0"  
Depth: 73'-0"  
Height: 23'-6"

#### Architectural Style

Craftsman  
Lodge  
Northwest

#### Number of Rooms

Bedrooms: 3  
Full Baths: 3

#### Garage

Garage Size: 2  
Garage Door Location: Front  
Garage Type: Angled

#### Roof Pitches

Primary: 8:12

#### Wall Heights

Main: 8'-0"  
Upper: 8'-0"  
3rd Floor: 0'-0"  
Lower: 0'-0"

#### Foundation Type

Crawl Space

#### Roof Framing

Trusses

#### Floor Load

Live (lbs): 40 PSF  
Dead (lbs): 10 PSF

#### Roof Load

Live (lbs): 25 PSF  
Dead (lbs): 15 PSF  
Wind: 85 MPH

#### Design Features

- Bonus Space @ Upper Floor
- Front Porch
- Great Room
- Laundry Room @ Main Floor
- Master Bedroom @ Main Floor Rear
- View Lot - Rear
- Wide Lot