



## WINTHROP - PLAN M2815A3FA-0

Total Area: 2815 sq. ft.  
Garage Area: 1025 sq. ft.  
Garage Area: 1025 sq. ft.  
Garage Size: 3  
Stories: 2  
Bedrooms: 4  
Full Baths: 4  
Width: 90'-0"  
Depth: 89'-0"  
Height: 26'-6"  
Foundation: Crawl Space

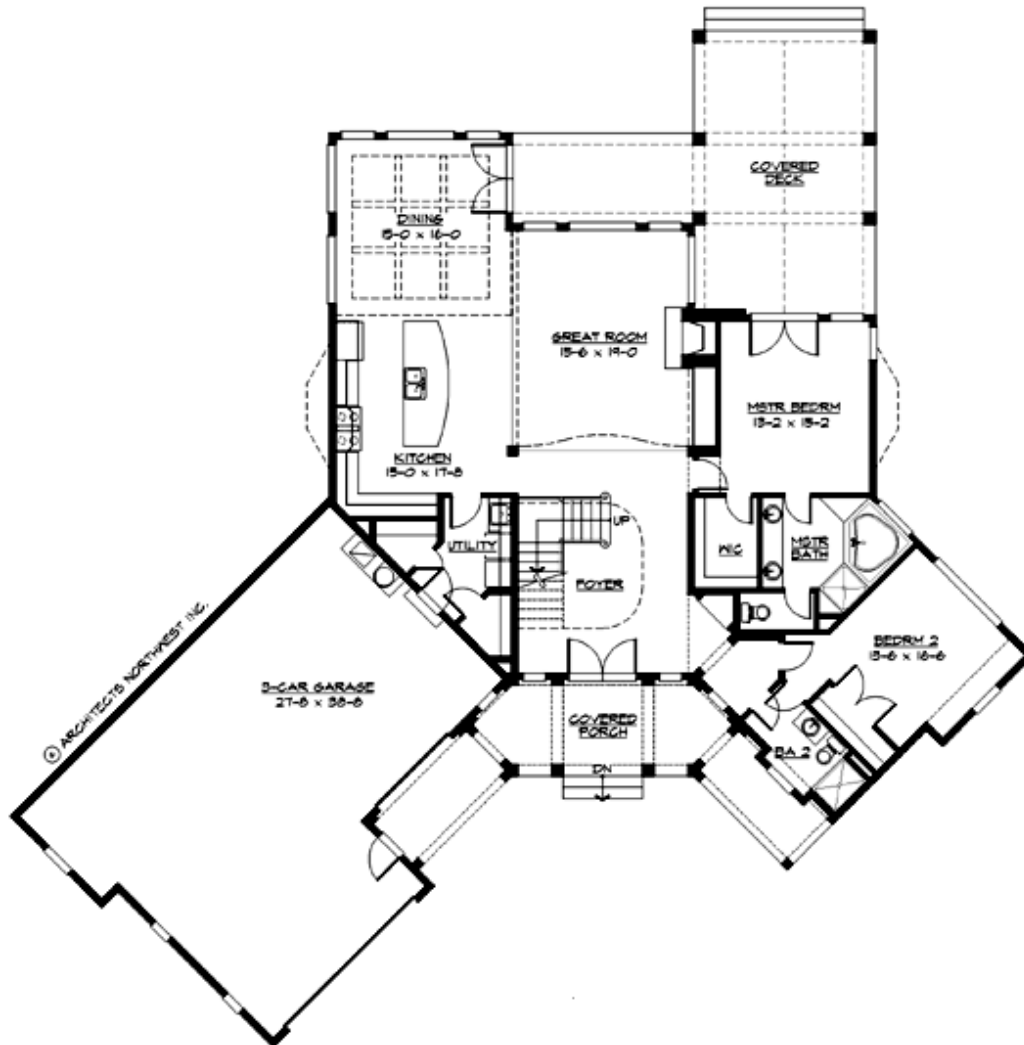


### ***A Graceful Country Lodge Embraces the Outdoors.***

This stunning rustic craftsman is perfect for a view lot. The large, columned porch creates a friendly feeling on approach. The gently angled plan with its sheltering rooflines, highlighted by robust curved brackets, conveys a sense of elegance and repose. The Winthrop's large, covered decks provide space for year-round outdoor living. The open interior features a dramatic bridge across the 2-story great room, a chef's kitchen, dining space with beamed dining, a convenient main-floor master suite, guest suite and laundry. Two upstairs secondary bedrooms with ensuite baths complete the plan.

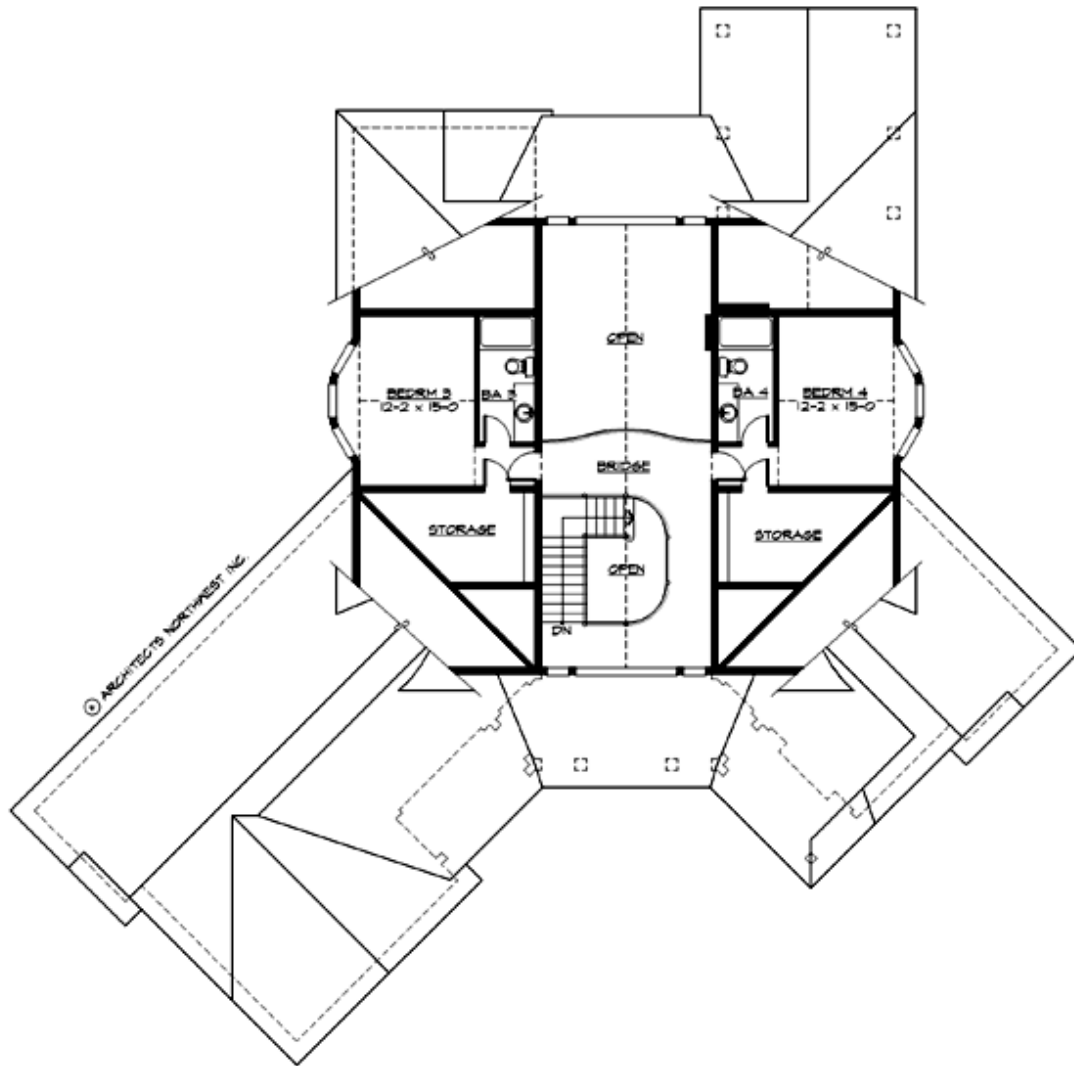
## WINTHROP - PLAN M2815A3FA-0

### MAIN FLOOR



## WINTHROP - PLAN M2815A3FA-0

### UPPER FLOOR





## WINTHROP - PLAN M2815A3FA-0

### PLAN DETAILS

#### Area Summary

Total Area:	2815 sq. ft.
Main Floor:	2065 sq. ft.
Upper Floor:	750 sq. ft.
Garage Floor:	1025 sq. ft.

#### General Information

Stories:	2
Width:	90'-0"
Depth:	89'-0"
Height:	26'-6"

#### Architectural Style

Cottage  
Shingle  
Traditional

#### Number of Rooms

Bedrooms:	4
Full Baths:	4

#### Garage

Garage Size:	3
Garage Door Location:	Front
Garage Type:	Angled

#### Roof Pitches

Primary:	8:12
Secondary:	4:12

#### Wall Heights

Main:	9'-0"
Upper:	9'-0"
3rd Floor:	0'-0"
Lower:	0'-0"

#### Foundation Type

Crawl Space

#### Roof Framing

Trusses

#### Floor Load

Live (lbs):	40 PSF
Dead (lbs):	10 PSF

#### Roof Load

Live (lbs):	25 PSF
Dead (lbs):	15 PSF
Wind:	85 MPH

#### Design Features

- Best Selling Plan
- Great Room
- Laundry Room @ Main Floor
- Master Bedroom @ Main Floor Rear
- Rear Porch
- View Lot - Rear
- Wide Lot