

## COLUMBIA - PLAN M2805A3FT-0

Total Area: 2805 sq. ft.  
Garage Area: 580 sq. ft.  
Garage Area: 580 sq. ft.  
Garage Size: 3  
Stories: 2  
Bedrooms: 3  
Full Baths: 2  
Half Baths: 1  
Width: 48'-0"  
Depth: 60'-0"  
Height: 27'-0"  
Foundation: Crawl Space

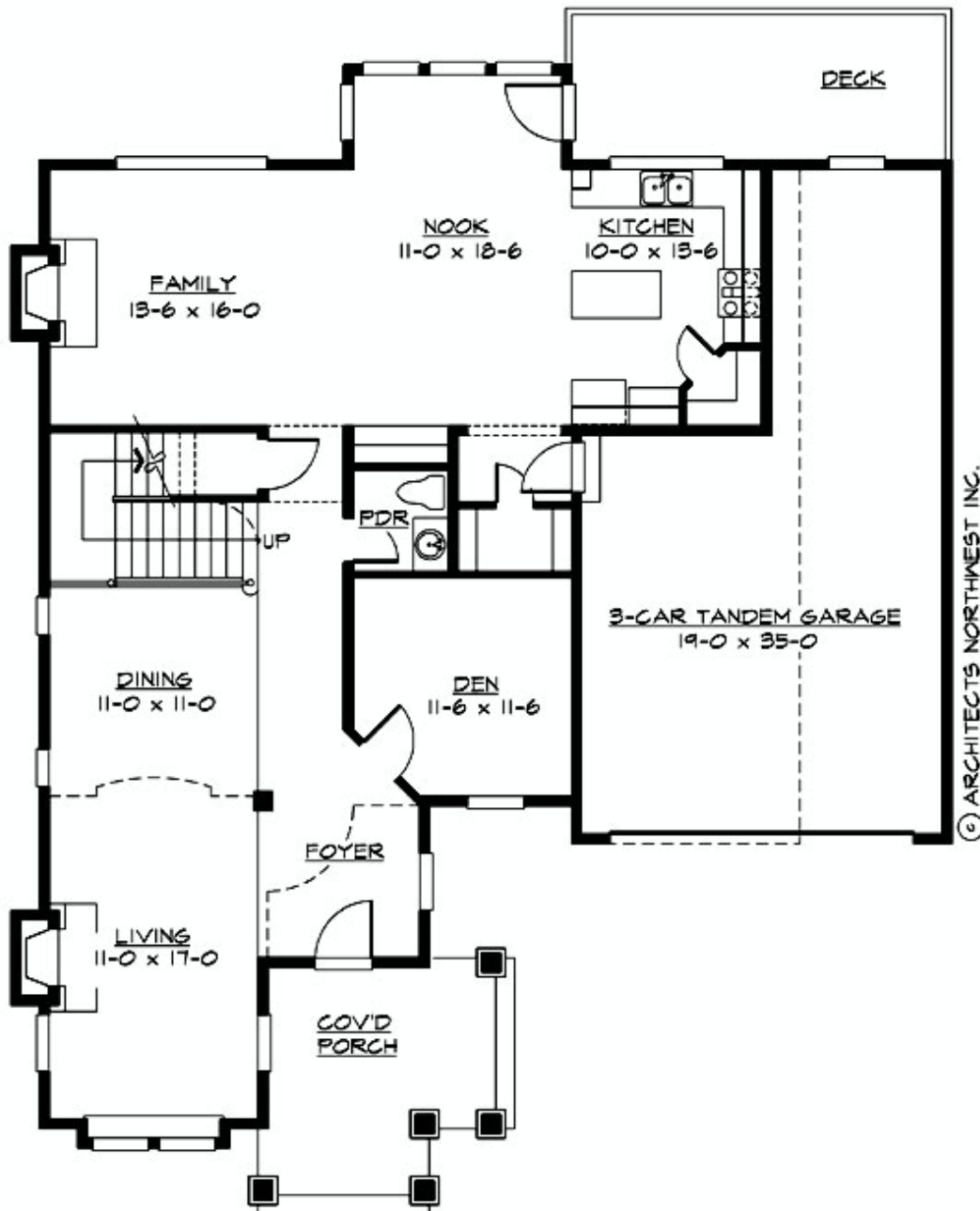


### ***Rustic Entry Tower Anchors Bold Craftsman Design.***

The Columbia's unique entry tower is a landmark element that sets this home apart from the ordinary. A two-story volume dining room, open stairwell and dramatic Juliet balcony overlook combine to create spectacular interior spaces filled with daylight. The main floor includes dramatic formal rooms, a large informal family living areas and a work-at-home den, while the upstairs features a private master suite with his-and-hers walk-in closets, three secondary bedrooms, a compartmented bath and a convenient laundry.

## COLUMBIA - PLAN M2805A3FT-0

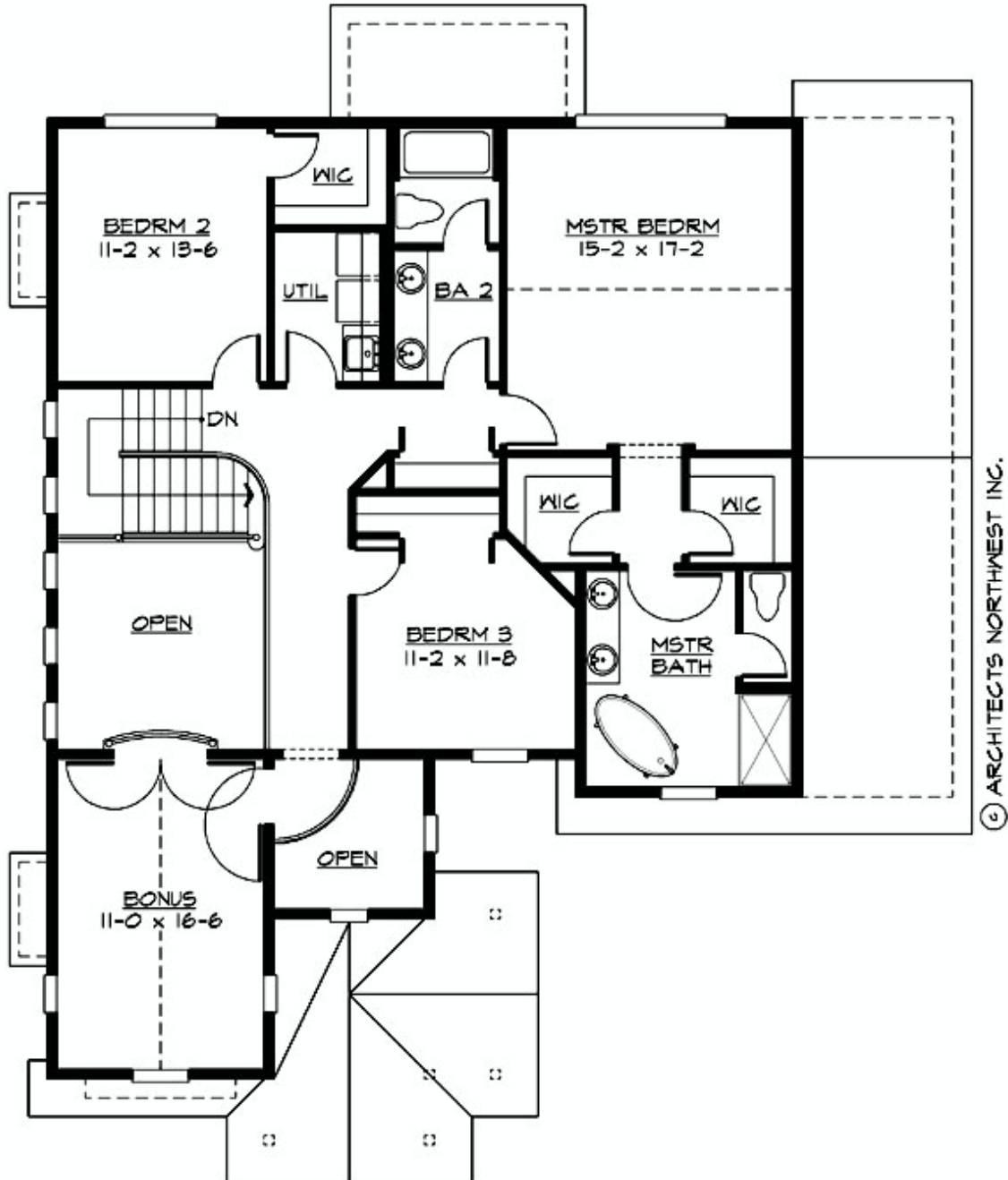
### MAIN FLOOR



MAIN FLOOR PLAN

**COLUMBIA - PLAN M2805A3FT-0**

UPPER FLOOR



UPPER FLOOR PLAN



## COLUMBIA - PLAN M2805A3FT-0

### PLAN DETAILS

#### Area Summary

Total Area:	2805 sq. ft.
Main Floor:	1425 sq. ft.
Upper Floor:	1380 sq. ft.
Garage Floor:	580 sq. ft.

#### General Information

Stories:	2
Width:	48'-0"
Depth:	60'-0"
Height:	27'-0"

#### Architectural Style

Craftsman  
Lodge  
Shingle

#### Number of Rooms

Bedrooms:	3
Full Baths:	2
Half Baths:	1

#### Garage

Garage Size:	3
Garage Door Location:	Front
Garage Type:	Tandem

#### Roof Pitches

Primary:	6:12
----------	------

#### Wall Heights

Main:	9'-0"
Upper:	8'-0"
3rd Floor:	0'-0"
Lower:	0'-0"

#### Foundation Type

Crawl Space

#### Roof Framing

Trusses

#### Floor Load

Live (lbs):	40 PSF
Dead (lbs):	10 PSF

#### Roof Load

Live (lbs):	25 PSF
Dead (lbs):	15 PSF
Wind:	85 MPH

#### Design Features

- Best Selling Plan
- Bonus Space @ Upper Floor
- Den/Office
- Front Porch
- Laundry Room @ Upper Floor
- Living & Family Room
- Master Bedroom @ Upper Floor Rear
- Narrow Lot
- Small Plan