



## HAWKSWORTH - PLAN R4970A3FA-0DB

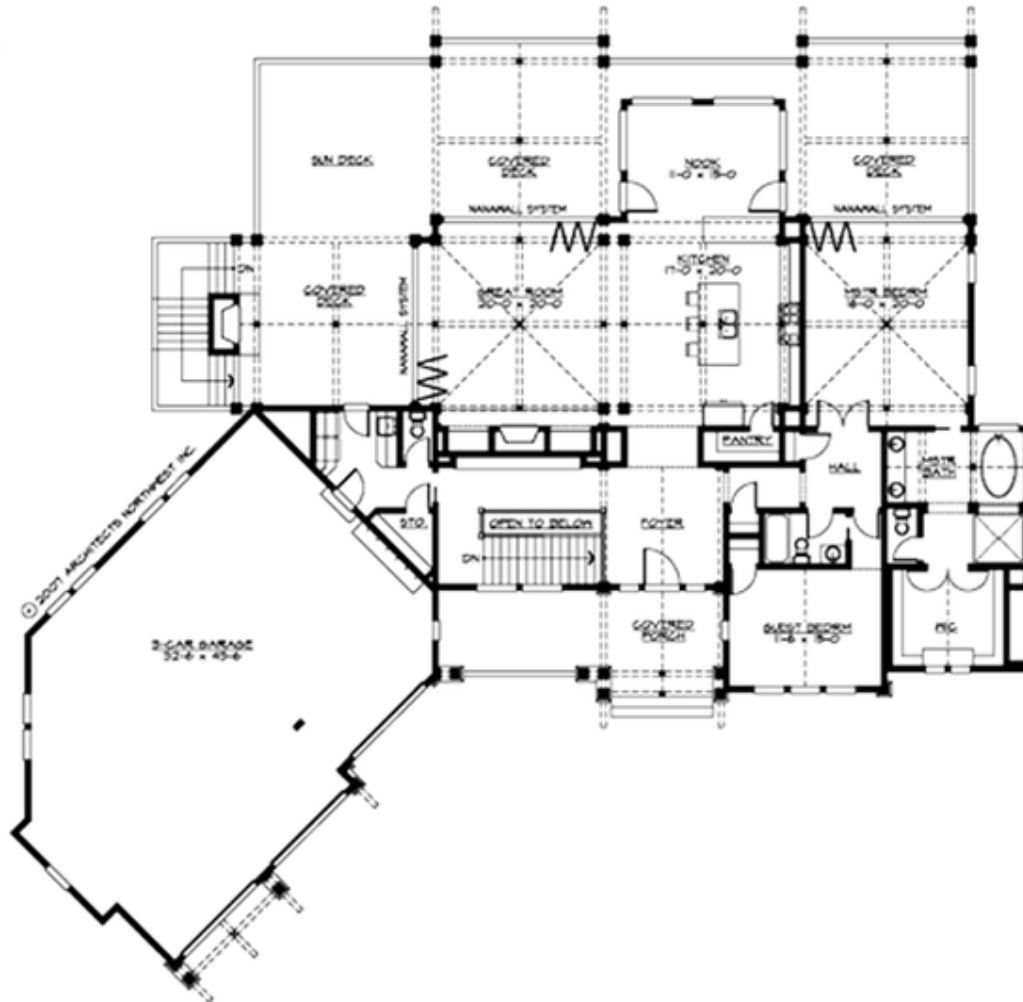
Total Area: 4970 sq. ft.  
Garage Area: 1955 sq. ft.  
Garage Size: 3  
Stories: 2  
Bedrooms: 4  
Full Baths: 4  
Half Baths: 1  
Width: 100'-0"  
Depth: 94'-0"  
Height: 30'-0"  
Foundation: Daylight Basement





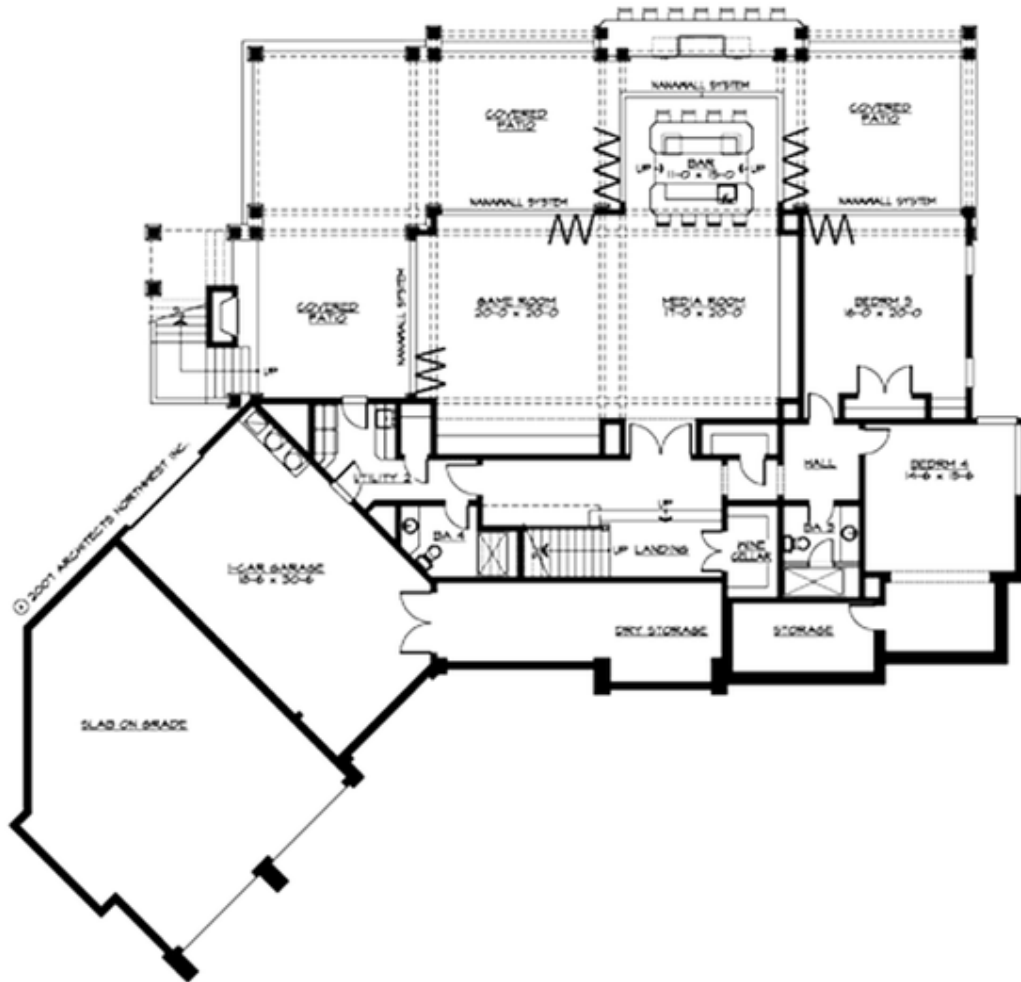
## HAWKSWORTH - PLAN R4970A3FA-0DB

### MAIN FLOOR



## HAWKSWORTH - PLAN R4970A3FA-0DB

### LOWER FLOOR





## HAWKSWORTH - PLAN R4970A3FA-0DB

### PLAN DETAILS

#### Area Summary

Total Area: 4970 sq. ft.  
Main Floor: 2500 sq. ft.  
Lower Floor: 2470 sq. ft.  
Garage Floor: 1955 sq. ft.

#### General Information

Stories: 2  
Width: 100'-0"  
Depth: 94'-0"  
Height: 30'-0"

#### Architectural Style

Cottage  
Craftsman  
Lodge

#### Number of Rooms

Bedrooms: 4  
Full Baths: 4  
Half Baths: 1

#### Garage

Garage Size: 3  
Garage Door Location: Front  
Garage Type: Angled

#### Roof Pitches

Primary: 10:12  
Secondary: 5:12

#### Wall Heights

Main: 10'-0"  
Upper: 0'-0"  
3rd Floor: 0'-0"  
Lower: 10'-0"

#### Foundation Type

Daylight Basement

#### Roof Framing

Stick

#### Floor Load

Live (lbs): 40 PSF  
Dead (lbs): 10 PSF

#### Roof Load

Live (lbs): 25 PSF  
Dead (lbs): 15 PSF  
Wind: 85 MPH

#### Design Features

- Bonus Space @ Lower Floor
- Front and Rear Porch
- Great Room
- Laundry Room @ Main Floor
- Luxury Plan
- Master Bedroom @ Main Floor Rear