



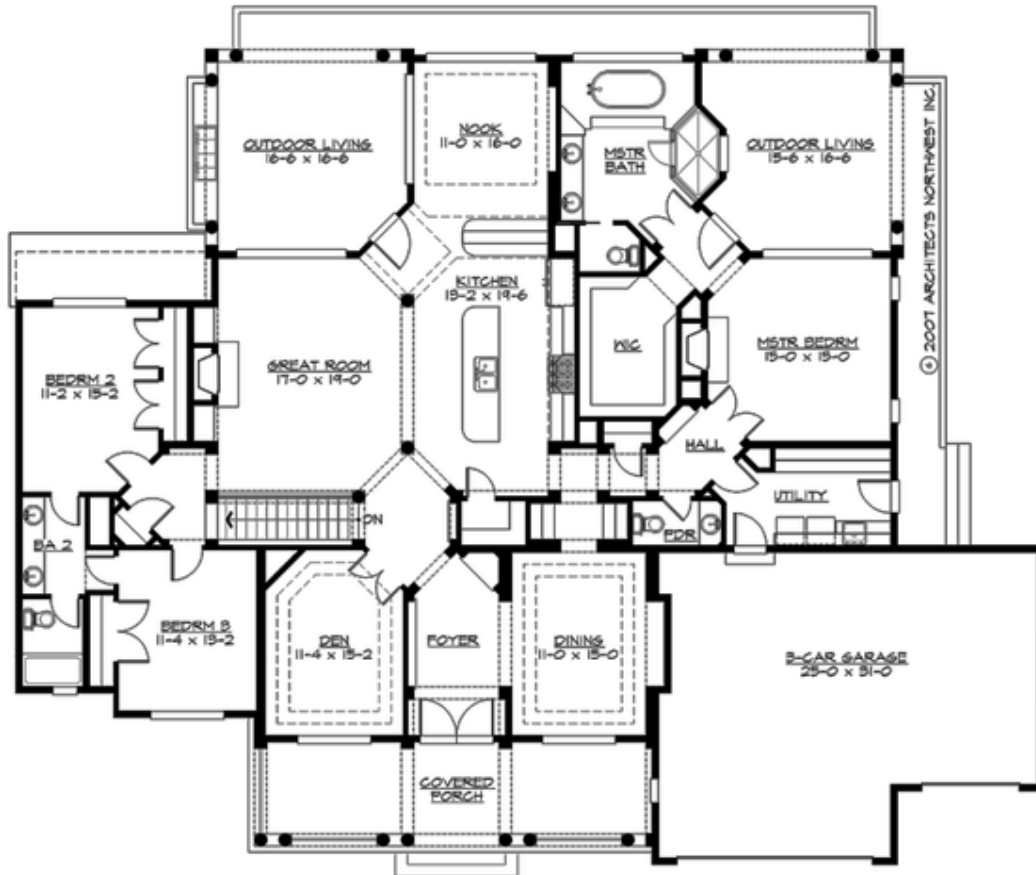
## PACIFIC COVE HEIGHTS - PLAN R2820A3F-0DB

Total Area: 4445 sq. ft.  
Garage Area: 0 sq. ft.  
Garage Area: 0 sq. ft.  
Garage Size: 3  
Stories: 2  
Bedrooms: 5  
Full Baths: 3  
Half Baths: 2  
Width: 84'-0"  
Depth: 67'-0"  
Height: 24'-6"  
Foundation: Daylight Basement



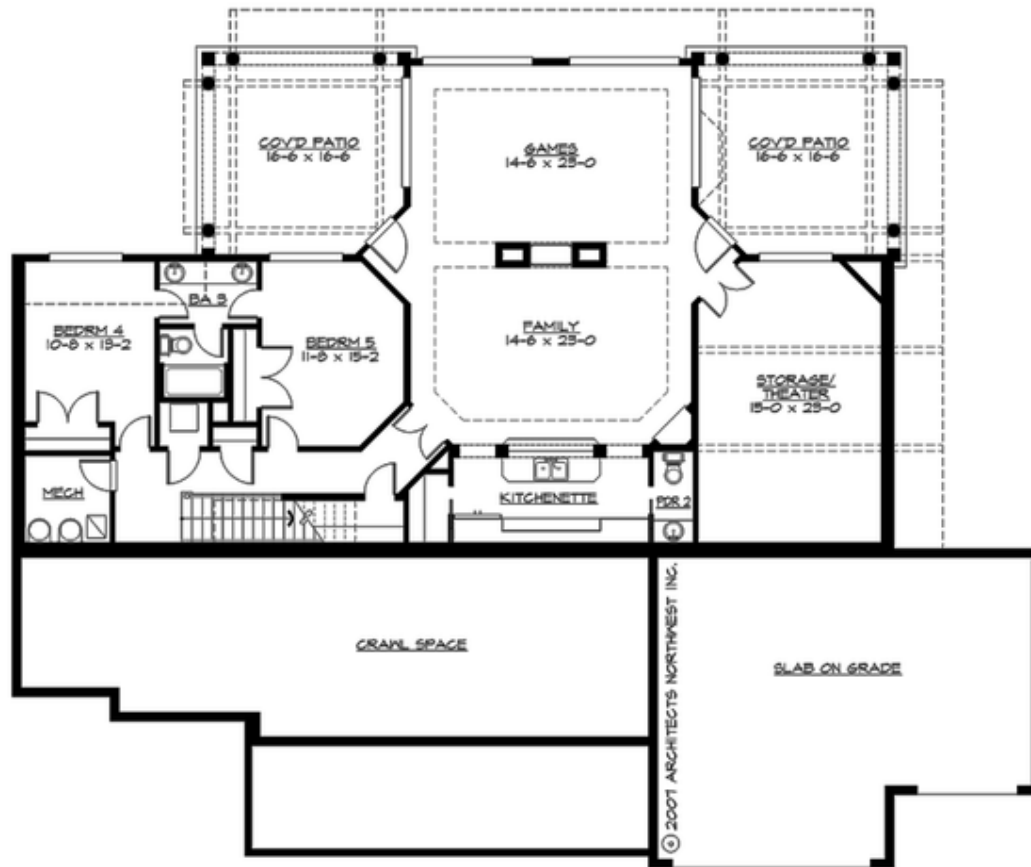
## PACIFIC COVE HEIGHTS - PLAN R2820A3F-0DB

### MAIN FLOOR



## PACIFIC COVE HEIGHTS - PLAN R2820A3F-0DB

### LOWER FLOOR





## PACIFIC COVE HEIGHTS - PLAN R2820A3F-0DB

### PLAN DETAILS

#### Area Summary

Total Area: 4445 sq. ft.  
Main Floor: 2770 sq. ft.  
Lower Floor: 1675 sq. ft.

#### General Information

Stories: 2  
Width: 84'-0"  
Depth: 67'-0"  
Height: 24'-6"

#### Architectural Style

Farmhouse  
Hampton  
Shingle

#### Number of Rooms

Bedrooms: 5  
Full Baths: 3  
Half Baths: 2

#### Garage

Garage Size: 3  
Garage Door Location: Front

#### Roof Pitches

Primary: 8:12  
Secondary: 6:12

#### Wall Heights

Main: 10'-0"  
Upper: 0'-0"  
3rd Floor: 0'-0"  
Lower: 10'-0"

#### Foundation Type

Daylight Basement

#### Roof Framing

Trusses

#### Floor Load

Live (lbs): 40 PSF  
Dead (lbs): 10 PSF

#### Roof Load

Live (lbs): 25 PSF  
Dead (lbs): 15 PSF  
Wind: 85 MPH

#### Design Features

- Bonus Space @ Lower Floor
- Den/Office
- Front and Rear Porch
- Great Room
- Green Plan
- Laundry Room @ Main Floor
- Master Bedroom @ Main Floor Rear
- Wide Lot