



## KENNEDY RIDGE - PLAN M5101A3S-0FB

Total Area: 7214 sq. ft.  
Garage Area: 944 sq. ft.  
Garage Area: 944 sq. ft.  
Garage Size: 3  
Stories: 3  
Bedrooms: 3  
Full Baths: 3  
Half Baths: 1  
Width: 62'-0"  
Depth: 96'-0"  
Height: 28'-0"  
Foundation: Cellar Basement



## KENNEDY RIDGE - PLAN M5101A3S-0FB

### MAIN FLOOR

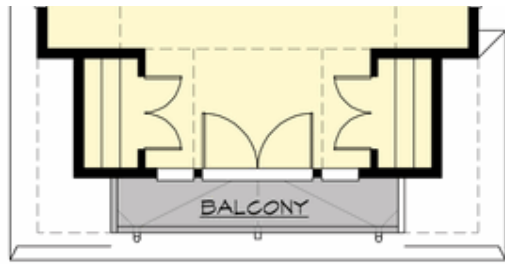




## KENNEDY RIDGE - PLAN M5101A3S-0FB

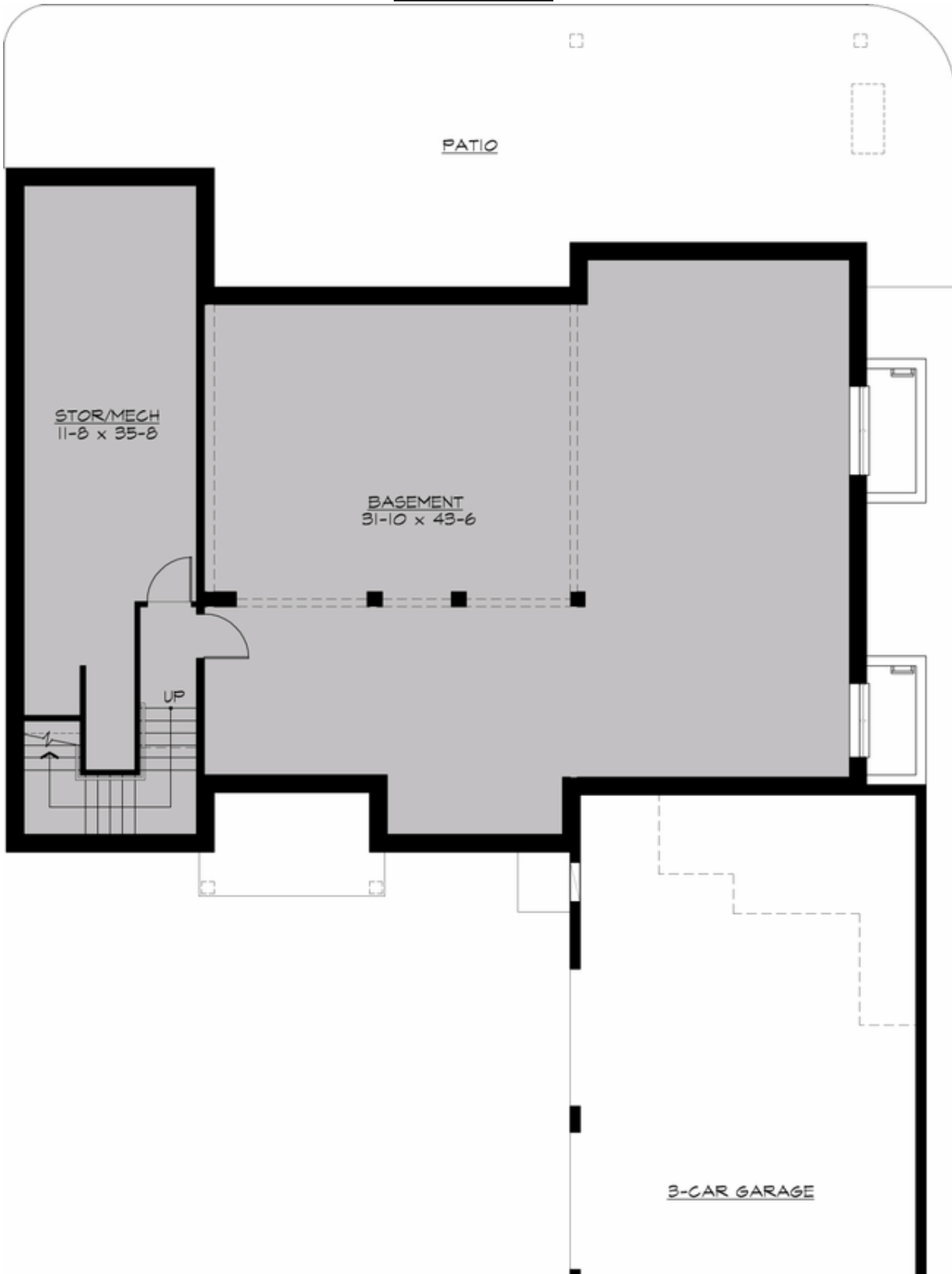
### UPPER FLOOR





**KENNEDY RIDGE - PLAN M5101A3S-0FB**

**LOWER FLOOR**







## KENNEDY RIDGE - PLAN M5101A3S-0FB

### PLAN DETAILS

#### Area Summary

Total Area:	7214 sq. ft.
Main Floor:	2392 sq. ft.
Upper Floor:	2708 sq. ft.
Lower Floor:	2114 sq. ft.
Garage Floor:	944 sq. ft.

#### General Information

Stories:	3
Width:	62'-0"
Depth:	96'-0"
Height:	28'-0"

#### Architectural Style

Contemporary  
Farmhouse  
Modern

#### Number of Rooms

Bedrooms:	3
Full Baths:	3
Half Baths:	1

#### Garage

Garage Size:	3
Garage Door Location:	Side

#### Roof Pitches

Primary:	8:12
Secondary:	4:12

#### Wall Heights

Main:	10'-0"
Upper:	9'-0"
Lower:	9'-0"

#### Foundation Type

Cellar Basement

#### Roof Framing

Combination

#### Floor Load

Live (lbs):	40 PSF
Dead (lbs):	10 PSF

#### Roof Load

Live (lbs):	25 PSF
Dead (lbs):	15 PSF
Wind:	85 MPH

#### Design Features

- Bonus Space @ Upper Floor & Lower Floor
- Den/Office
- Front and Rear Porch
- Great Room
- Laundry Room @ Upper Floor
- Luxury Plan
- Master Bedroom @ Upper Floor Rear
- View Lot - Rear