



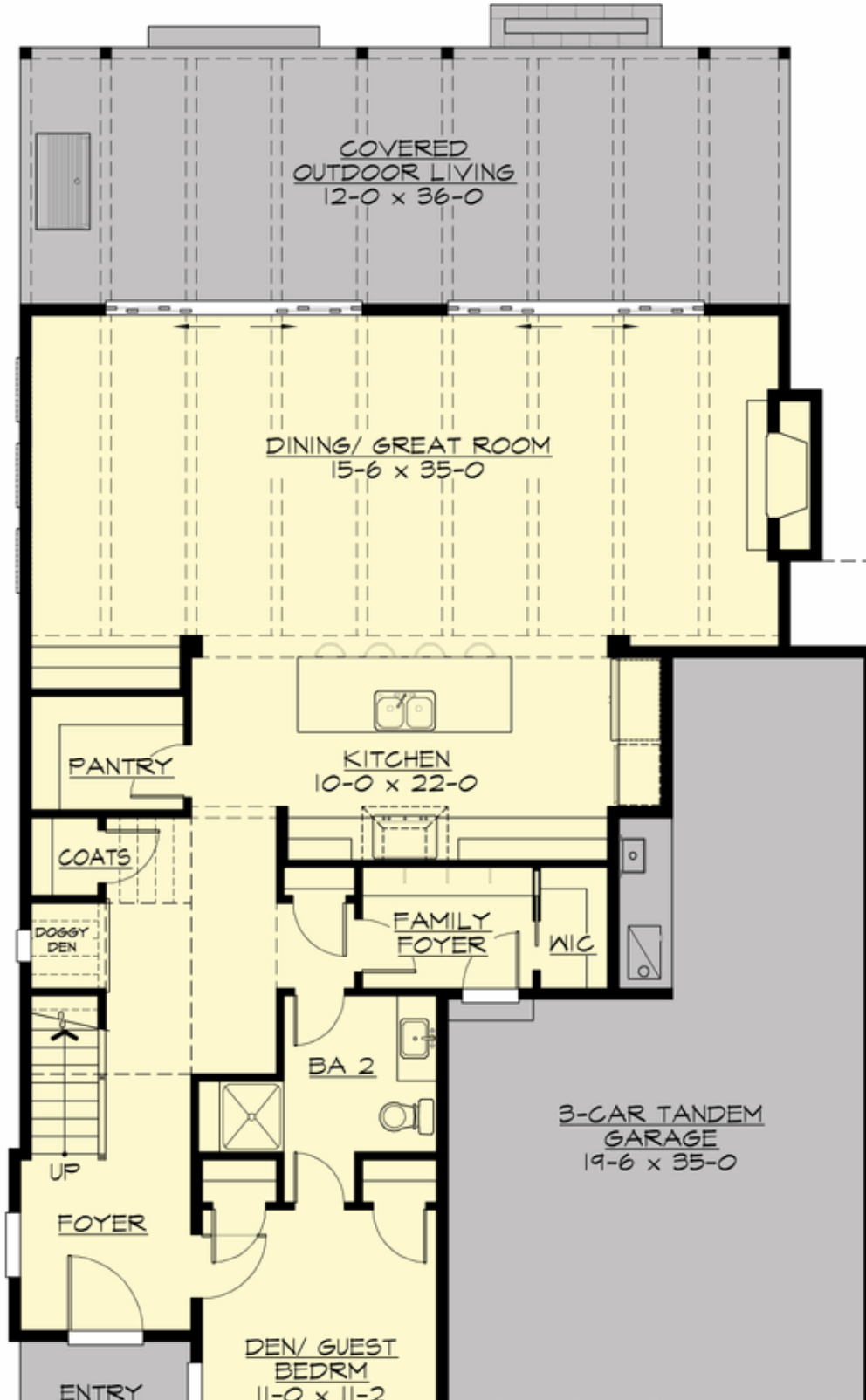
## LANNISTER - PLAN M3320A3FT-0

Total Area: 3298 sq. ft.  
Garage Area: 598 sq. ft.  
Garage Area: 598 sq. ft.  
Garage Size: 3  
Stories: 2  
Bedrooms: 4  
Full Baths: 4  
Width: 40'-6"  
Depth: 68'-0"  
Height: 28'-0"  
Foundation: Crawl Space

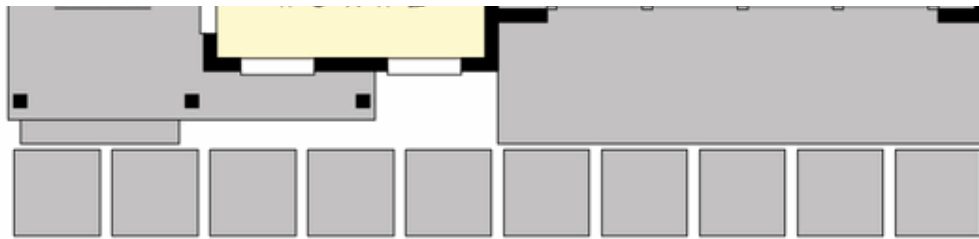


## LANNISTER - PLAN M3320A3FT-0

### MAIN FLOOR



**COPYRIGHT NOTICE:** It is illegal to build this plan without a legally obtained set of prints. It is illegal to copy or redraw these plans. Violation of U.S. Copyright Laws are punishable with fines up to \$150,000. After the purchase of plans, changes may be made by a qualified professional.

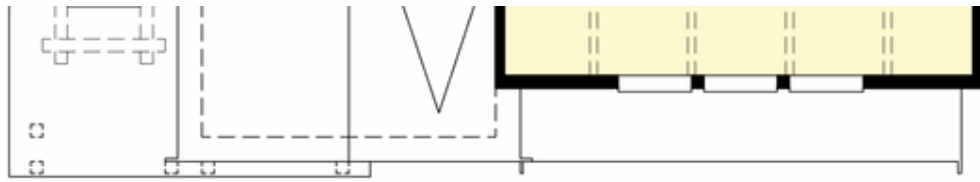


## LANNISTER - PLAN M3320A3FT-0

### UPPER FLOOR



**COPYRIGHT NOTICE:** It is illegal to build this plan without a legally obtained set of prints. It is illegal to copy or redraw these plans. Violation of U.S. Copyright Laws are punishable with fines up to \$150,000. After the purchase of plans, changes may be made by a qualified professional.





## LANNISTER - PLAN M3320A3FT-0

### PLAN DETAILS

#### Area Summary

Total Area: 3298 sq. ft.  
Main Floor: 1437 sq. ft.  
Upper Floor: 1861 sq. ft.  
Garage Floor: 598 sq. ft.

#### General Information

Stories: 2  
Width: 40'-6"  
Depth: 68'-0"  
Height: 28'-0"

#### Architectural Style

Country  
Farmhouse  
Modern

#### Number of Rooms

Bedrooms: 4  
Full Baths: 4

#### Garage

Garage Size: 3  
Garage Door Location: Front  
Garage Type: Tandem

#### Roof Pitches

Primary: 12:12  
Secondary: 4:12

#### Wall Heights

Main: 10'-0"  
Upper: 9'-0"

#### Foundation Type

Crawl Space

#### Roof Framing

Trusses

#### Floor Load

Live (lbs): 40 PSF  
Dead (lbs): 10 PSF

#### Roof Load

Live (lbs): 25 PSF  
Dead (lbs): 15 PSF  
Wind: 85 MPH

#### Design Features

- Bonus Space @ Upper Floor
- Den/Office
- Front and Rear Porch
- Great Room
- Laundry Room @ Upper Floor
- Master Bedroom @ Upper Floor Rear
- Narrow Lot
- View Lot - Rear