



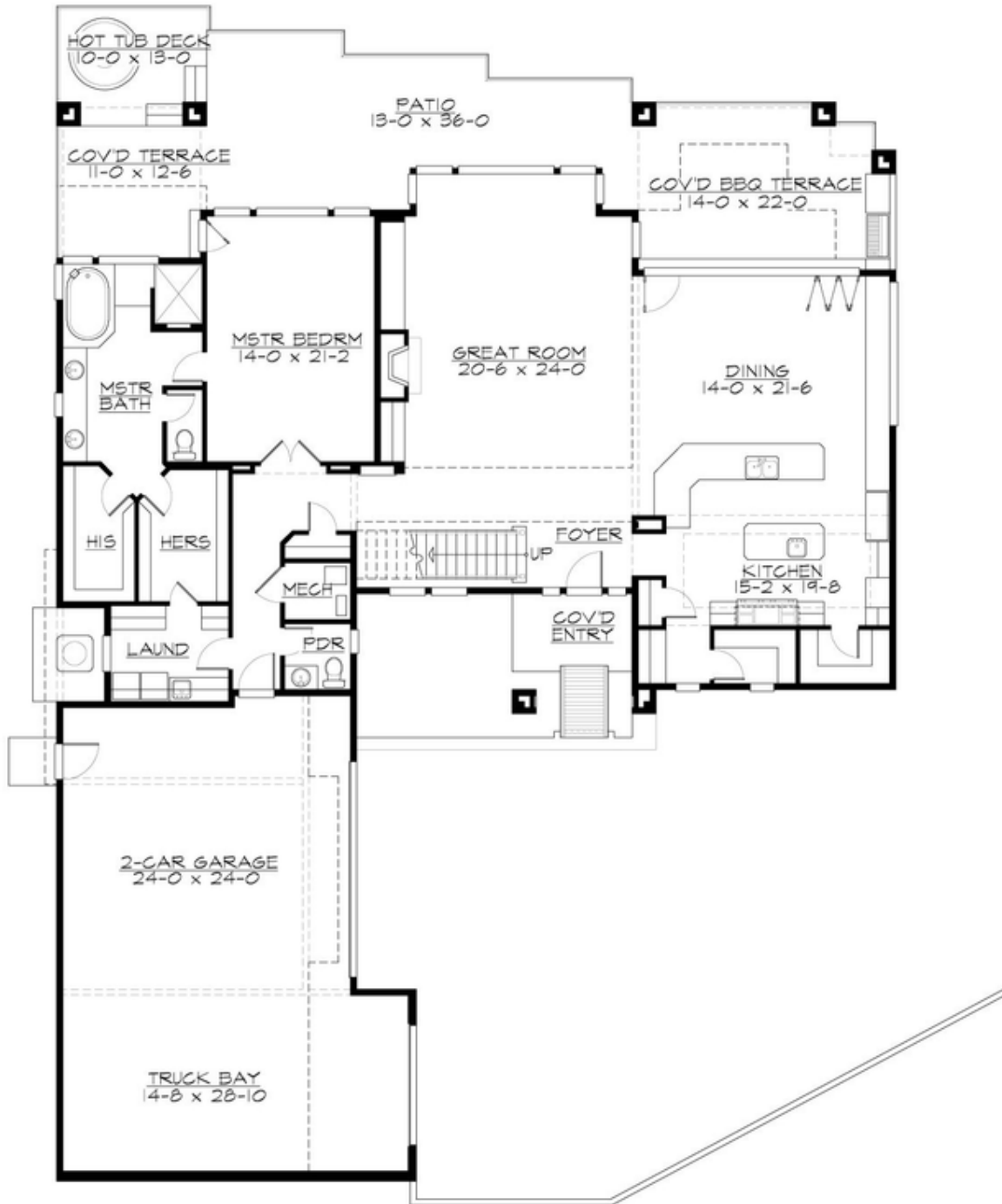
## SAUNDERS - PLAN M5064A3S-0

Total Area: 5064 sq. ft.  
Garage Area: 1079 sq. ft.  
Garage Area: 1079 sq. ft.  
Garage Size: 3  
Stories: 2  
Bedrooms: 4  
Full Baths: 4  
Half Baths: 1  
Width: 70'-0"  
Depth: 98'-0"  
Height: 23'-3"  
Foundation: Crawl Space



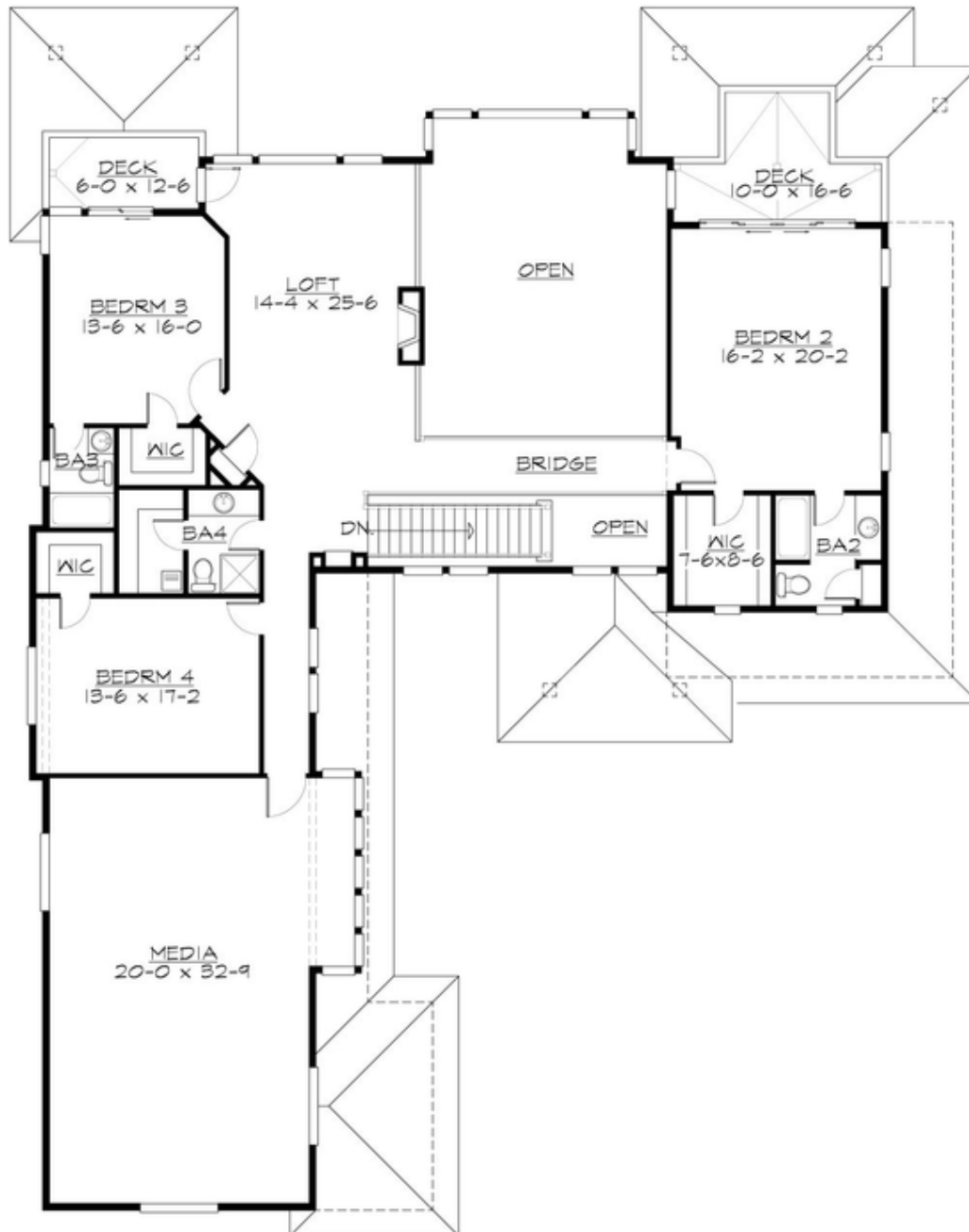
## SAUNDERS - PLAN M5064A3S-0

### MAIN FLOOR



**SAUNDERS - PLAN M5064A3S-0**

**UPPER FLOOR**





## SAUNDERS - PLAN M5064A3S-0

### PLAN DETAILS

#### Area Summary

Total Area: 5064 sq. ft.  
Main Floor: 2510 sq. ft.  
Upper Floor: 2554 sq. ft.  
Garage Floor: 1079 sq. ft.

#### General Information

Stories: 2  
Width: 70'-0"  
Depth: 98'-0"  
Height: 23'-3"

#### Architectural Style

Contemporary  
Modern  
Prarie

#### Number of Rooms

Bedrooms: 4  
Full Baths: 4  
Half Baths: 1

#### Garage

Garage Size: 3  
Garage Door Location: Side

#### Roof Pitches

Primary: 3:12

#### Wall Heights

Main: 10'-0"  
Upper: 9'-0"

#### Foundation Type

Crawl Space

#### Roof Framing

Trusses

#### Floor Load

Live (lbs): 40 PSF  
Dead (lbs): 10 PSF

#### Roof Load

Live (lbs): 25 PSF  
Dead (lbs): 15 PSF  
Wind: 85 MPH

#### Design Features

- Bonus Space @ Upper Floor
- Front and Rear Porch
- Great Room
- Laundry Room @ Main Floor
- Master Bedroom @ Main Floor Rear
- View Lot - Rear