



## MIRA - PLAN M3820A2FU-0DB

Total Area: 3847 sq. ft.  
Garage Area: 610 sq. ft.  
Garage Area: 610 sq. ft.  
Garage Size: 2  
Stories: 3  
Bedrooms: 4  
Full Baths: 3  
Half Baths: 1  
Width: 54'-6"  
Depth: 37'-6"  
Height: 21'-0"  
Foundation: Daylight Basement



## MIRA - PLAN M3820A2FU-0DB

### MAIN FLOOR



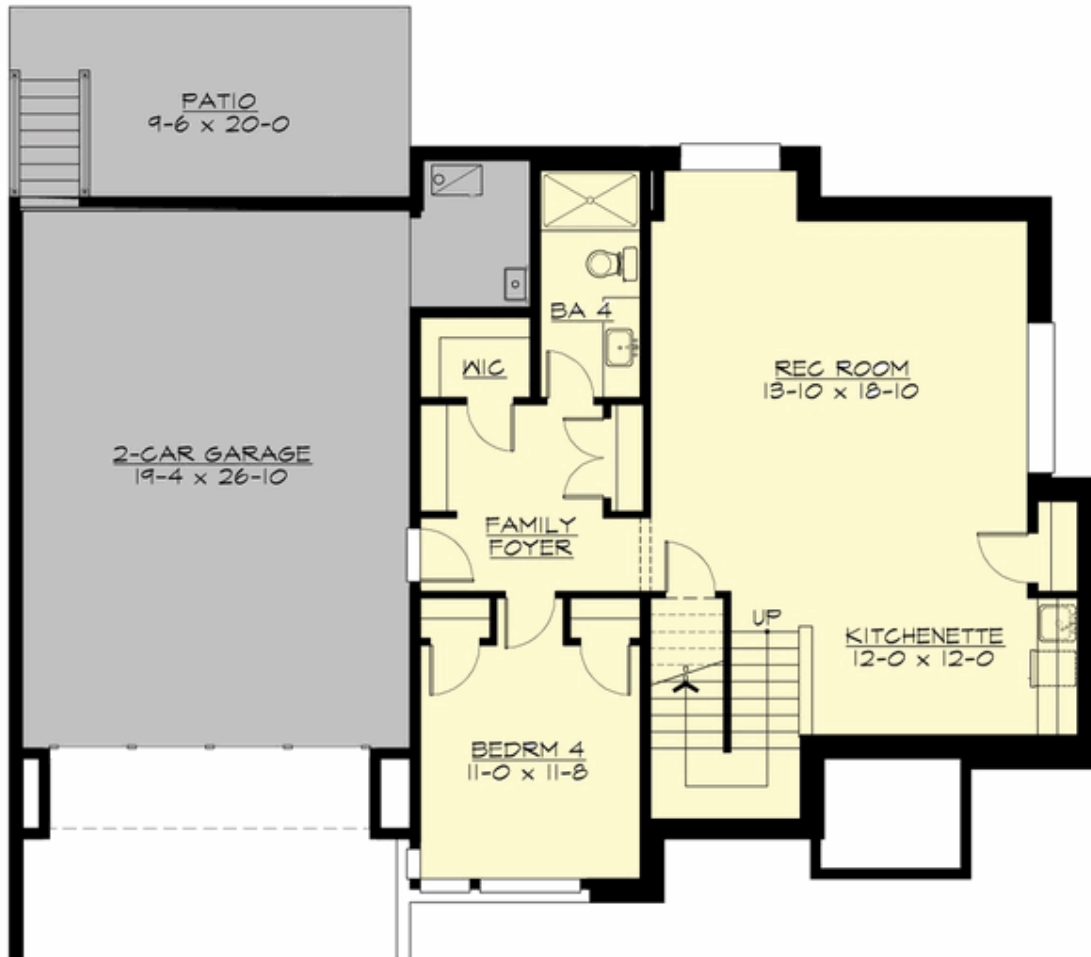
**MIRA - PLAN M3820A2FU-0DB**

**UPPER FLOOR**



**MIRA - PLAN M3820A2FU-0DB**

**LOWER FLOOR**





## MIRA - PLAN M3820A2FU-0DB

### PLAN DETAILS

#### Area Summary

Total Area:	3847 sq. ft.
Main Floor:	1470 sq. ft.
Upper Floor:	1330 sq. ft.
Lower Floor:	1047 sq. ft.
Garage Floor:	610 sq. ft.

#### General Information

Stories:	3
Width:	54'-6"
Depth:	37'-6"
Height:	21'-0"

#### Architectural Style

Contemporary  
Modern  
Northwest

#### Number of Rooms

Bedrooms:	4
Full Baths:	3
Half Baths:	1

#### Garage

Garage Size:	2
Garage Door Location:	Front
Garage Type:	Under

#### Roof Pitches

Primary:	1:12
----------	------

#### Wall Heights

Main:	9'-0"
Upper:	8'-0"
Lower:	9'-0"

#### Foundation Type

Daylight Basement

#### Roof Framing

Trusses

#### Floor Load

Live (lbs):	40 PSF
Dead (lbs):	10 PSF

#### Roof Load

Live (lbs):	25 PSF
Dead (lbs):	15 PSF
Wind:	85 MPH

#### Design Features

- Bonus Space @ Lower Floor
- Den/Office
- Great Room
- Laundry Room @ Upper Floor
- Master Bedroom @ Upper Floor Rear
- Rear Porch
- View Lot - Front