

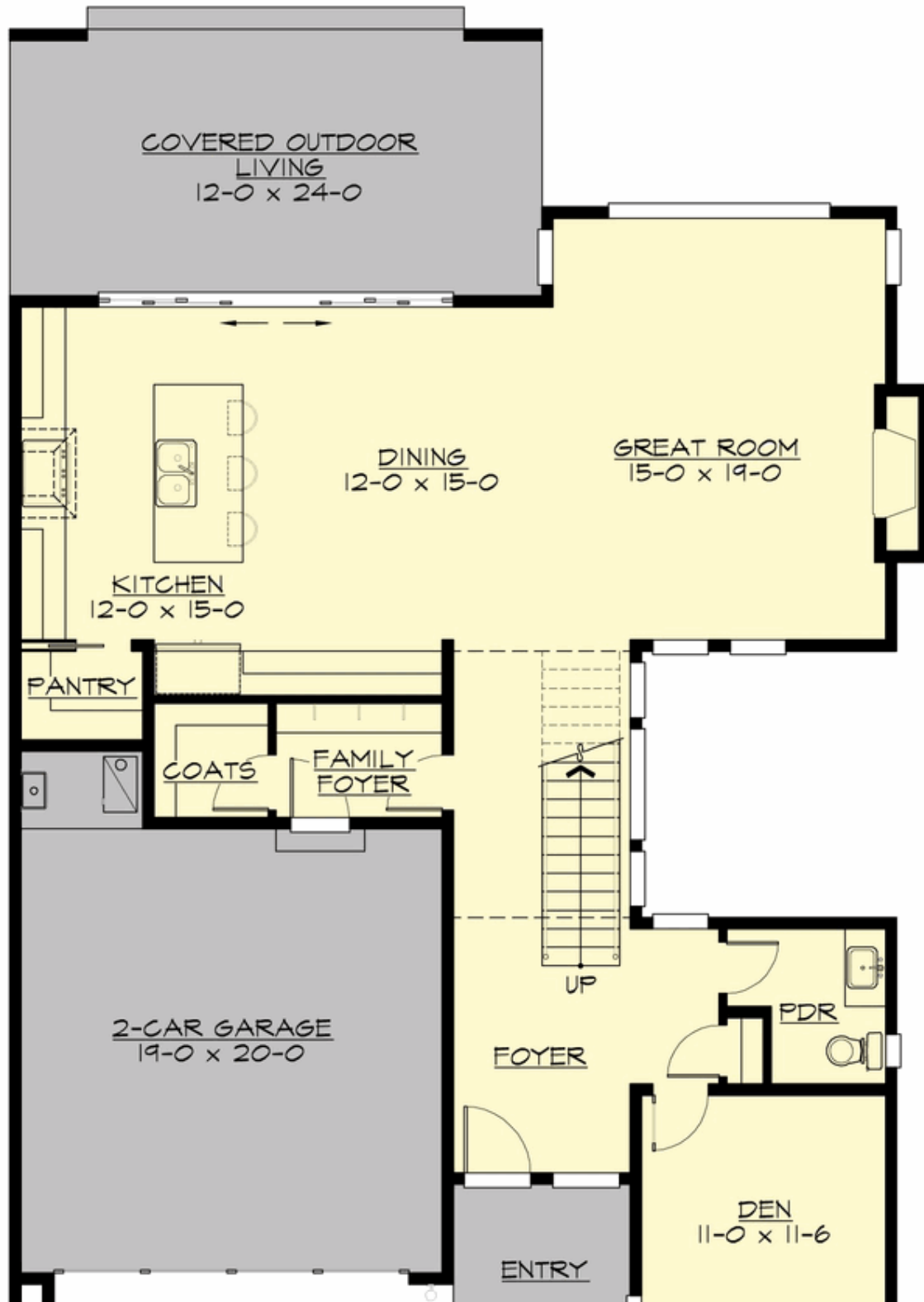
## RONA - PLAN M3140A2F-0

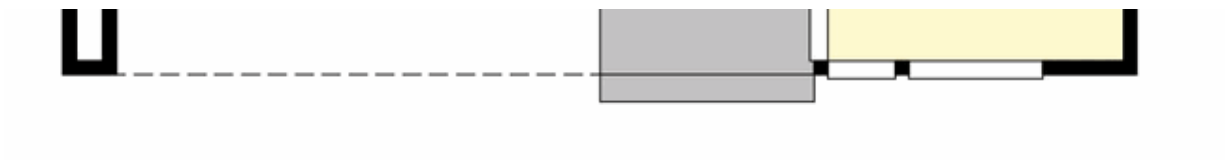
Total Area: 3138 sq. ft.  
Garage Area: 438 sq. ft.  
Garage Area: 438 sq. ft.  
Garage Size: 2  
Stories: 2  
Bedrooms: 4  
Full Baths: 3  
Half Baths: 1  
Width: 40'-0"  
Depth: 60'-0"  
Height: 26'-6"  
Foundation: Crawl Space



## RONA - PLAN M3140A2F-0

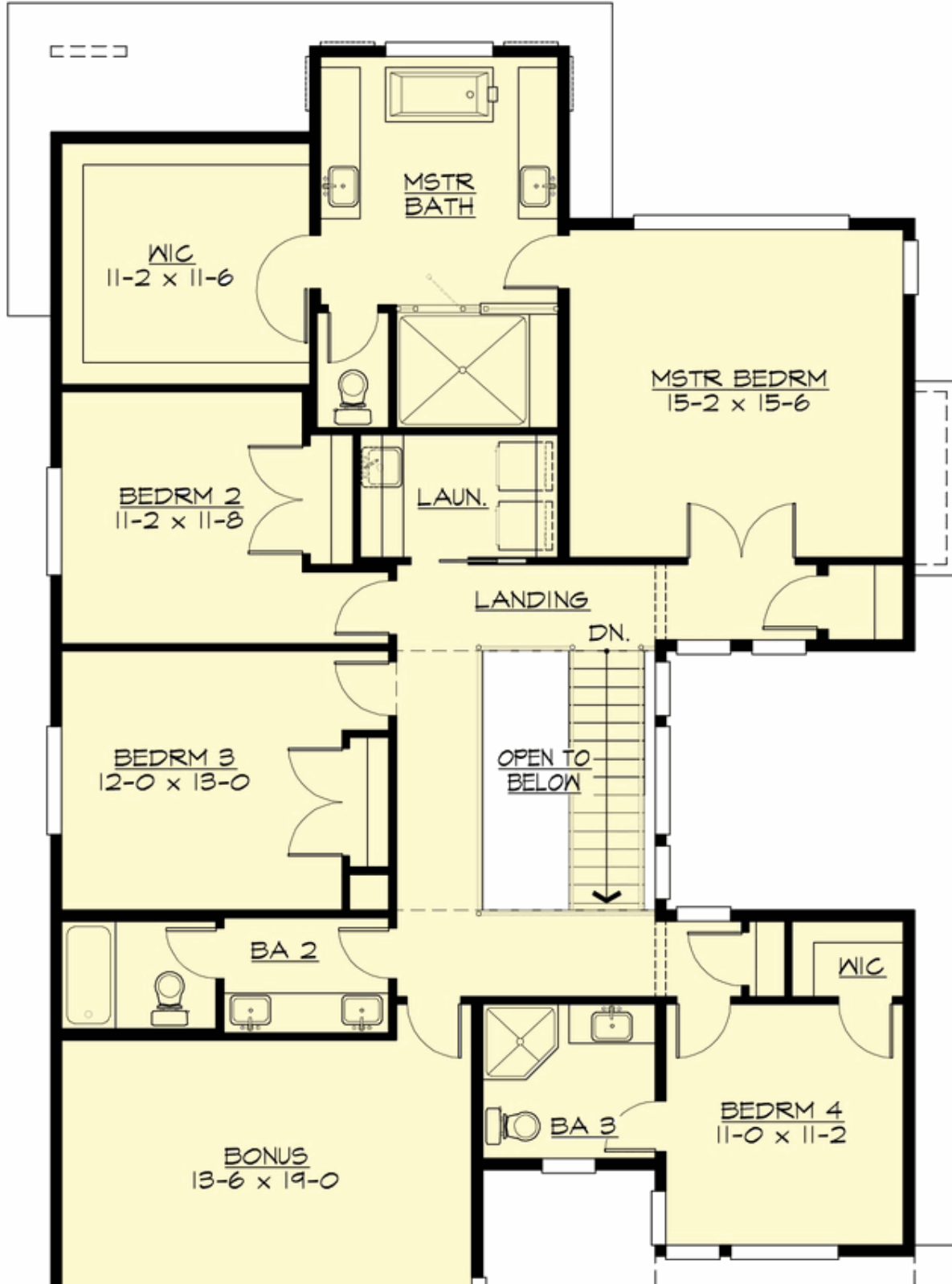
### MAIN FLOOR

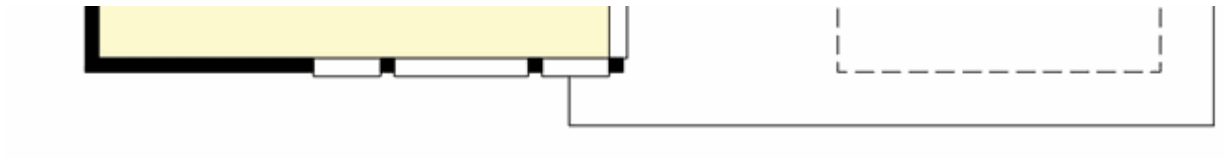




## RONA - PLAN M3140A2F-0

### UPPER FLOOR







## RONA - PLAN M3140A2F-0

### PLAN DETAILS

#### Area Summary

Total Area: 3138 sq. ft.  
Main Floor: 1270 sq. ft.  
Upper Floor: 1868 sq. ft.  
Garage Floor: 438 sq. ft.

#### General Information

Stories: 2  
Width: 40'-0"  
Depth: 60'-0"  
Height: 26'-6"

#### Architectural Style

Contemporary  
Modern  
Northwest

#### Number of Rooms

Bedrooms: 4  
Full Baths: 3  
Half Baths: 1

#### Garage

Garage Size: 2  
Garage Door Location: Front

#### Roof Pitches

Primary: 5:12  
Secondary: 3:12

#### Wall Heights

Main: 9'-0"  
Upper: 8'-0"

#### Foundation Type

Crawl Space

#### Roof Framing

Combination

#### Floor Load

Live (lbs): 40 PSF  
Dead (lbs): 10 PSF

#### Roof Load

Live (lbs): 25 PSF  
Dead (lbs): 15 PSF  
Wind: 85 MPH

#### Design Features

- Bonus Space @ Upper Floor
- Den/Office
- Great Room
- Laundry Room @ Upper Floor
- Master Bedroom @ Upper Floor Rear
- Narrow Lot
- Rear Porch
- View Lot - Rear