



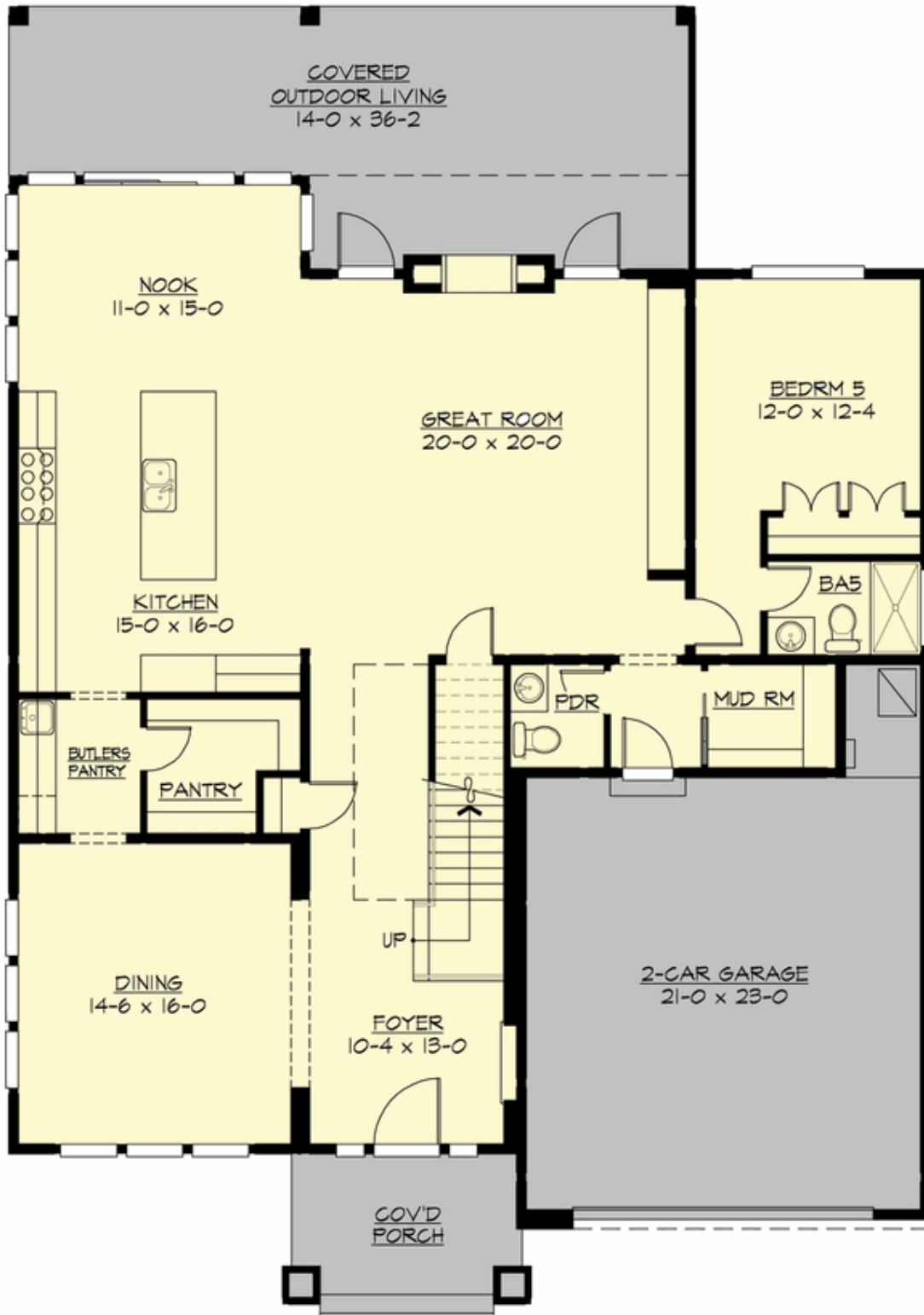
## MONTERRA - PLAN M4570A2F-0

Total Area: 4570 sq. ft.  
Garage Area: 534 sq. ft.  
Garage Area: 534 sq. ft.  
Garage Size: 2  
Stories: 3  
Bedrooms: 5  
Full Baths: 6  
Half Baths: 1  
Width: 49'-0"  
Depth: 69'-0"  
Height: 32'-10"  
Foundation: Crawl Space



## MONTERRA - PLAN M4570A2F-0

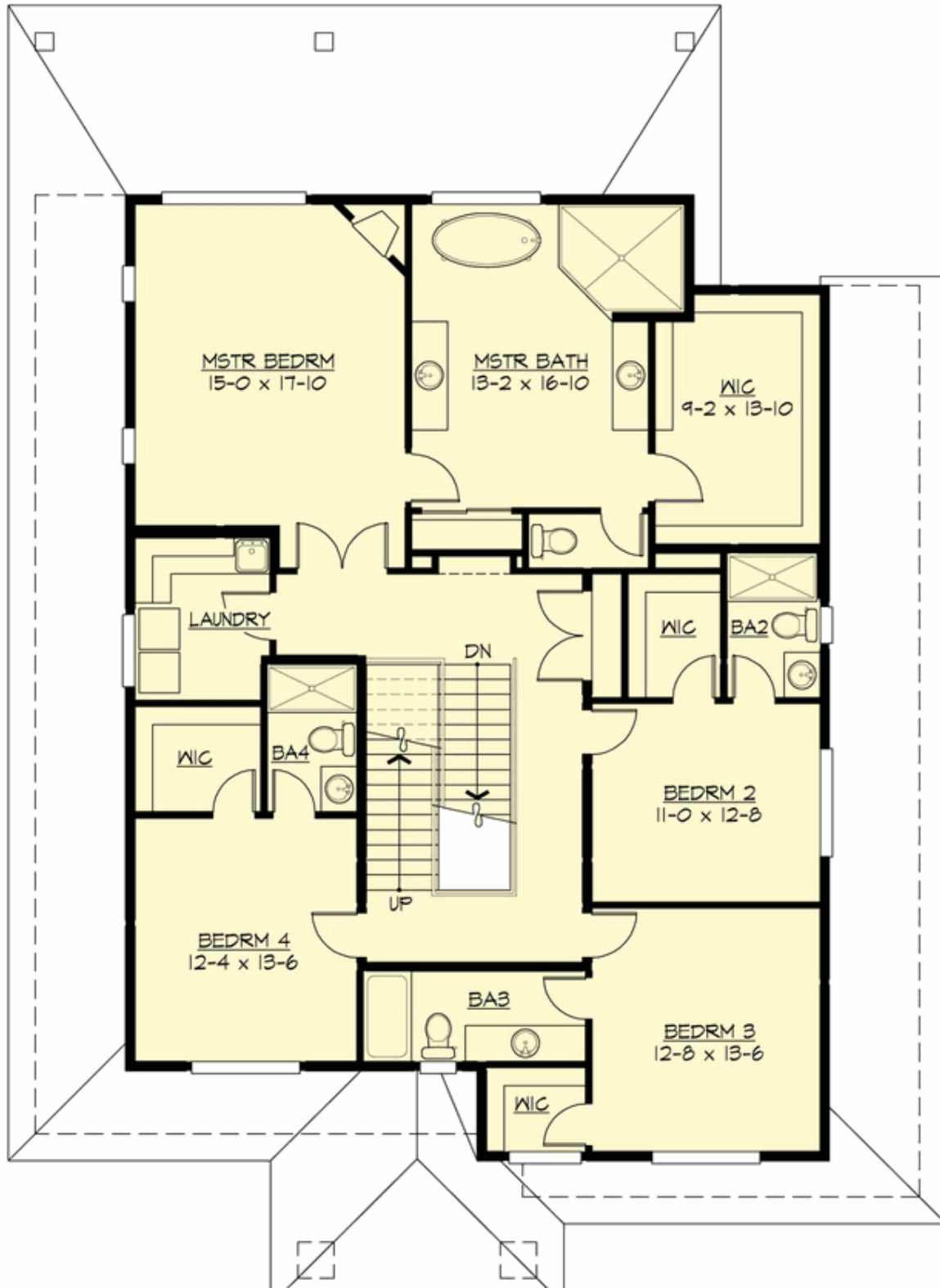
### MAIN FLOOR





## MONTERRA - PLAN M4570A2F-0

### UPPER FLOOR

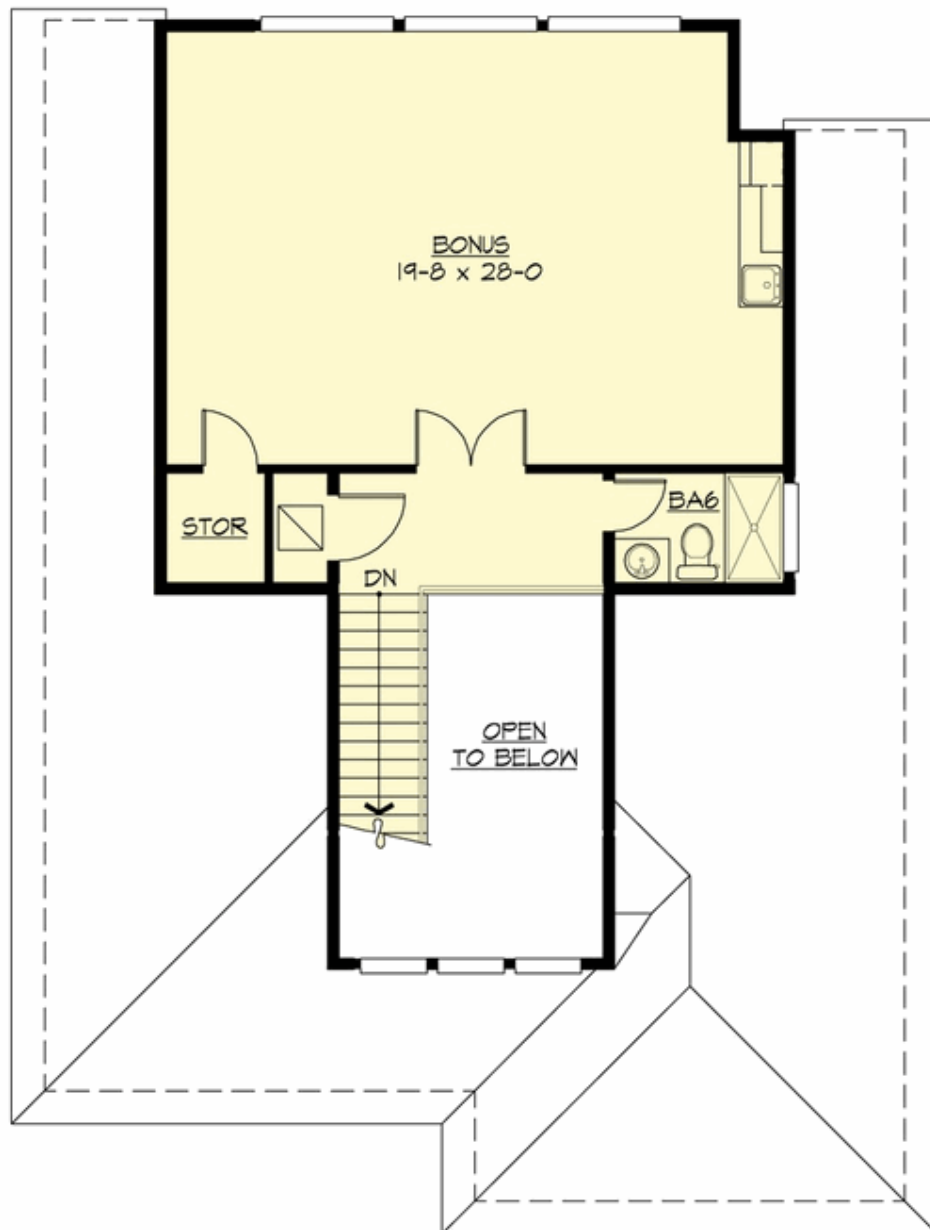


**COPYRIGHT NOTICE:** It is illegal to build this plan without a legally obtained set of prints. It is illegal to copy or redraw these plans. Violation of U.S. Copyright Laws are punishable with fines up to \$150,000. After the purchase of plans, changes may be made by a qualified professional.



**MONTERRA - PLAN M4570A2F-0**

**THIRD FLOOR**







## MONTERRA - PLAN M4570A2F-0

### PLAN DETAILS

#### Area Summary

Total Area:	4570 sq. ft.
Main Floor:	1926 sq. ft.
Upper Floor:	1902 sq. ft.
3rd Floor:	742 sq. ft.
Garage Floor:	534 sq. ft.

#### General Information

Stories:	3
Width:	49'-0"
Depth:	69'-0"
Height:	32'-10"

#### Architectural Style

Contemporary  
Prarie  
Traditional

#### Number of Rooms

Bedrooms:	5
Full Baths:	6
Half Baths:	1

#### Garage

Garage Size:	2
Garage Door Location:	Front

#### Roof Pitches

Primary:	4:12
Secondary:	3:12

#### Wall Heights

Main:	10'-0"
Upper:	9'-0"
3rd Floor:	8'-0"

#### Foundation Type

Crawl Space

#### Roof Framing

Trusses

#### Floor Load

Live (lbs):	40 PSF
Dead (lbs):	10 PSF

#### Roof Load

Live (lbs):	25 PSF
Dead (lbs):	15 PSF
Wind:	85 MPH

#### Design Features

- Bonus Space @ Third Floor
- Front and Rear Porch
- Great Room
- Laundry Room @ Upper Floor
- Master Bedroom @ Upper Floor Rear
- Narrow Lot
- View Lot - Rear