



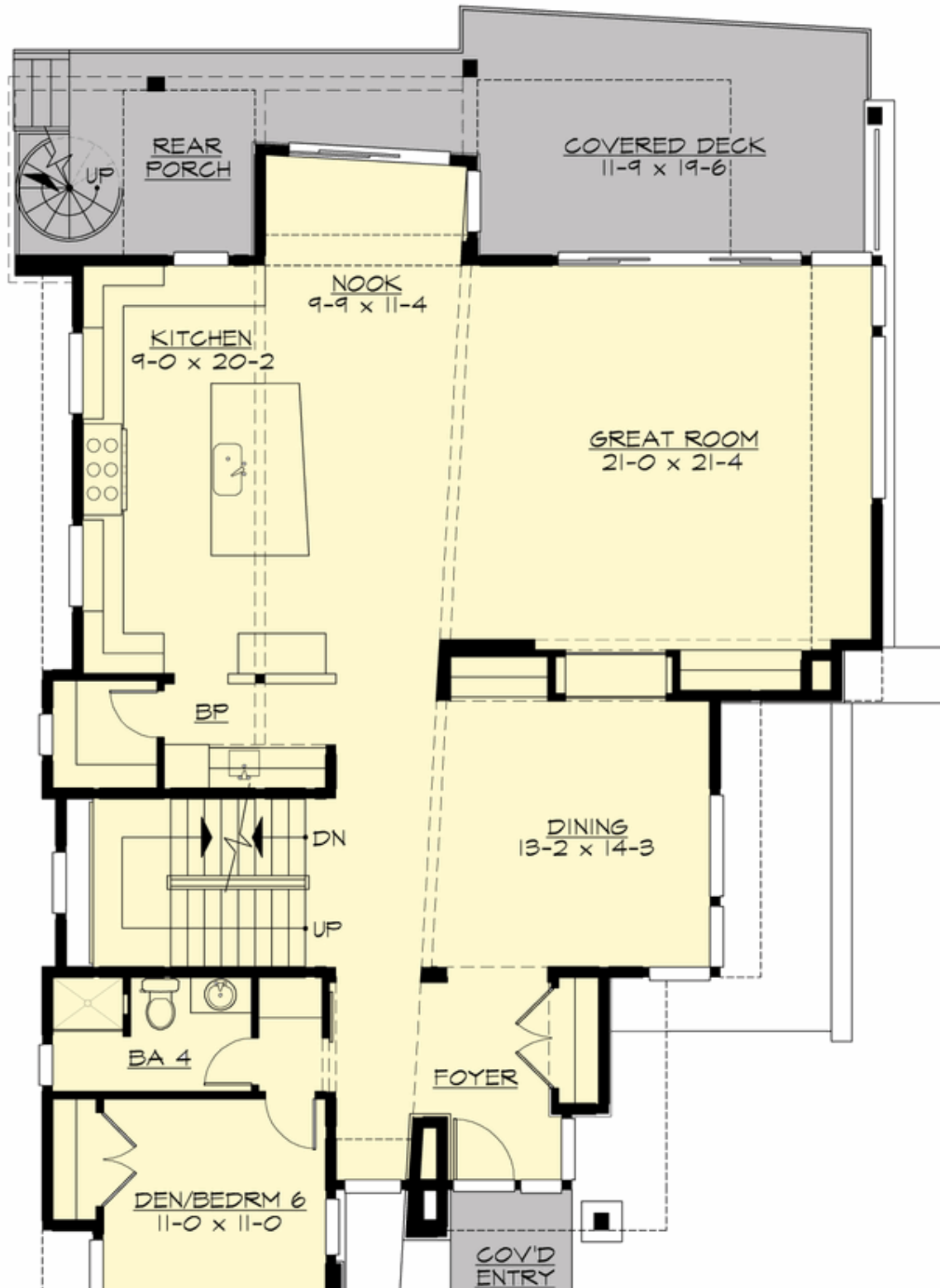
## EAGLEFEATHER - PLAN M4453A3RU-0DB

Total Area: 4452 sq. ft.  
Garage Area: 753 sq. ft.  
Garage Area: 753 sq. ft.  
Garage Size: 3  
Stories: 3  
Bedrooms: 5  
Full Baths: 5  
Width: 46'-0"  
Depth: 63'-2"  
Height: 21'-6"  
Foundation: Daylight Basement



## EAGLEFEATHER - PLAN M4453A3RU-0DB

### MAIN FLOOR

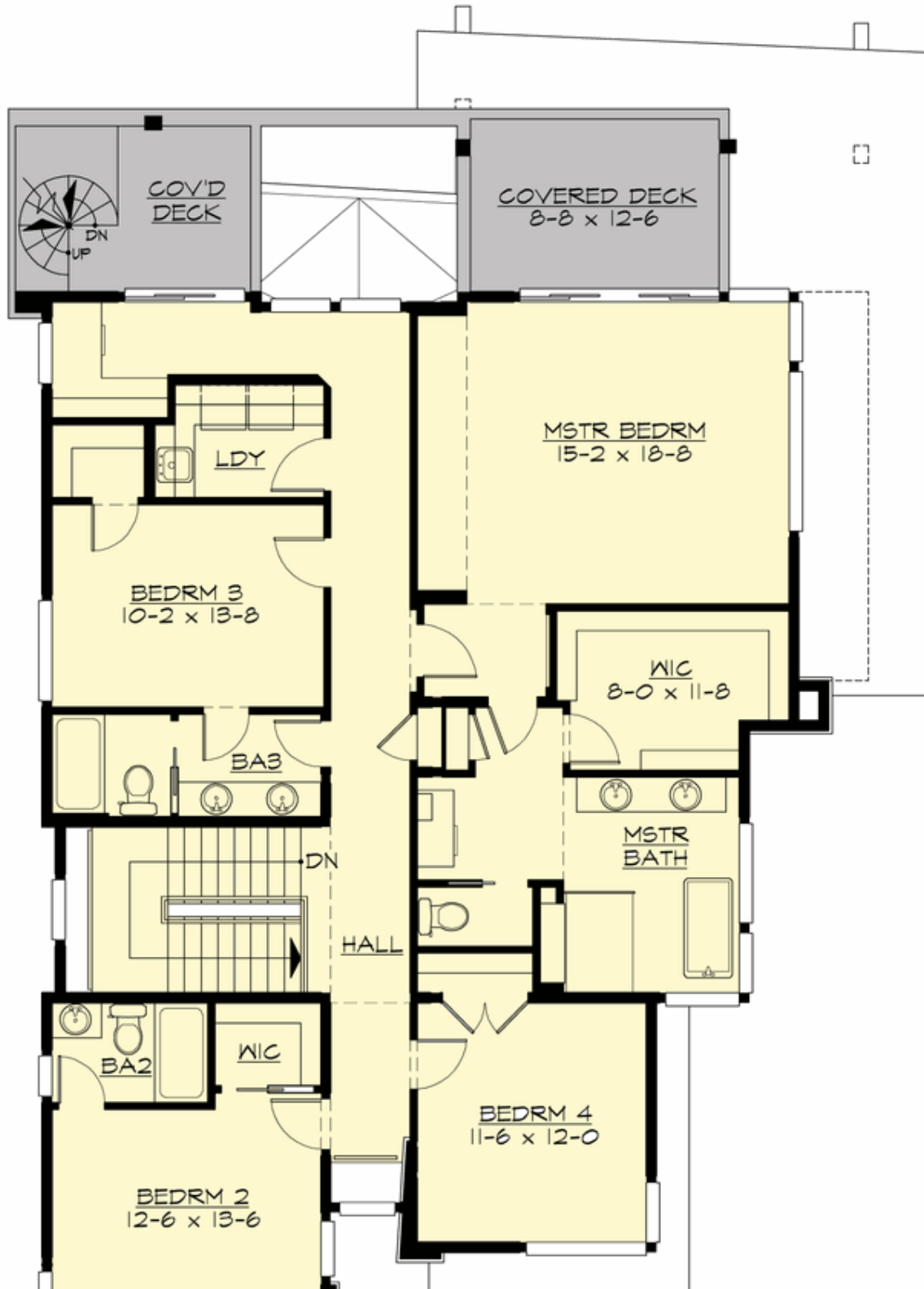


**COPYRIGHT NOTICE:** It is illegal to build this plan without a legally obtained set of prints. It is illegal to copy or redraw these plans. Violation of U.S. Copyright Laws are punishable with fines up to \$150,000. After the purchase of plans, changes may be made by a qualified professional.



**EAGLEFEATHER - PLAN M4453A3RU-0DB**

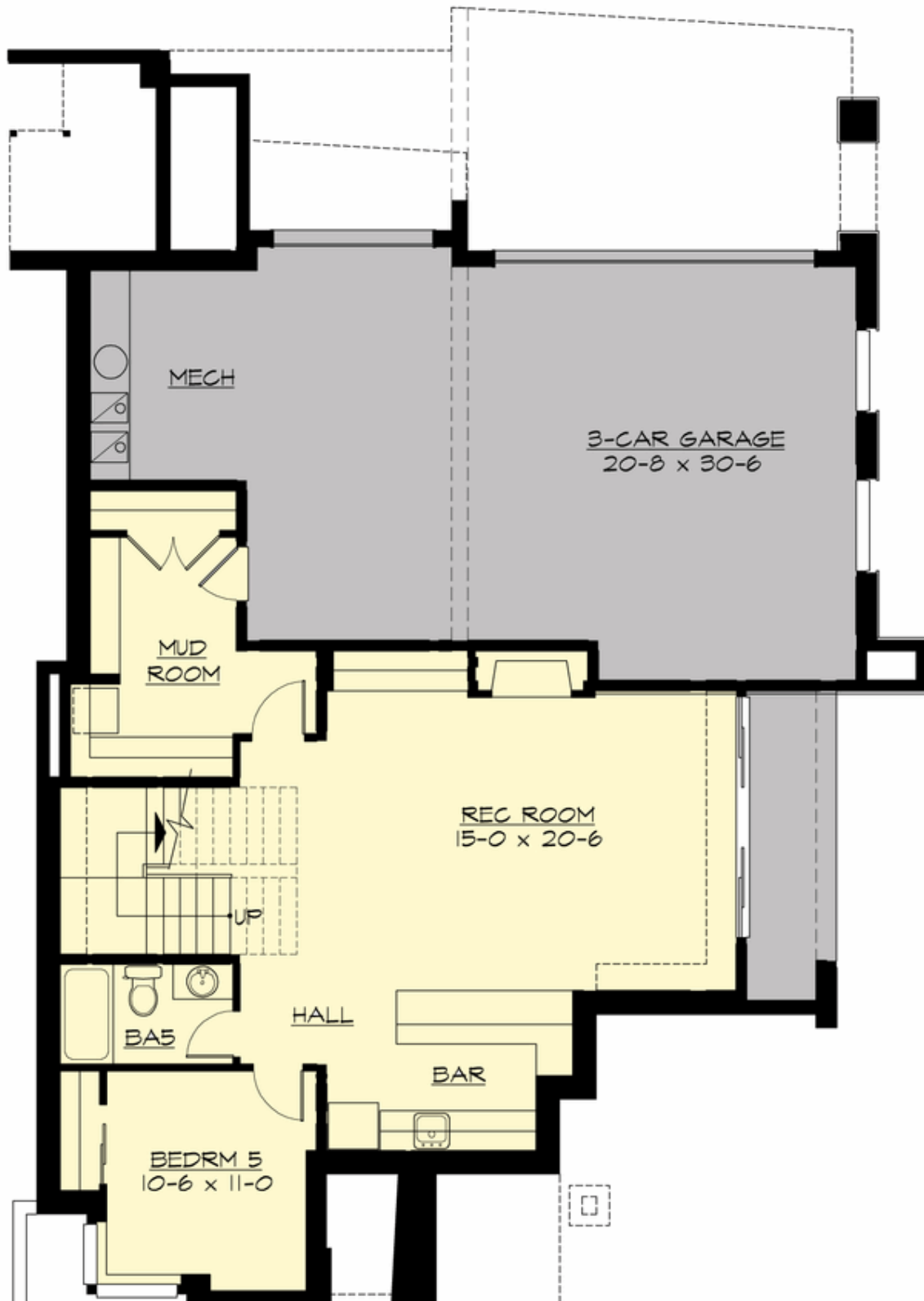
**UPPER FLOOR**





**EAGLEFEATHER - PLAN M4453A3RU-0DB**

**LOWER FLOOR**







## **EAGLEFEATHER - PLAN M4453A3RU-0DB**

### **PLAN DETAILS**

#### **Area Summary**

Total Area: 4452 sq. ft.  
Main Floor: 1777 sq. ft.  
Upper Floor: 1664 sq. ft.  
Lower Floor: 1011 sq. ft.  
Garage Floor: 753 sq. ft.

#### **General Information**

Stories: 3  
Width: 46'-0"  
Depth: 63'-2"  
Height: 21'-6"

#### **Architectural Style**

Contemporary  
Modern  
Northwest

#### **Number of Rooms**

Bedrooms: 5  
Full Baths: 5

#### **Garage**

Garage Size: 3  
Garage Door Location: Rear  
Garage Type: Under

#### **Roof Pitches**

Primary: 1:12

#### **Wall Heights**

Main: 10'-0"  
Upper: 8'-0"  
Lower: 9'-0"

#### **Foundation Type**

Daylight Basement

#### **Roof Framing**

Combination

#### **Floor Load**

Live (lbs): 40 PSF  
Dead (lbs): 10 PSF

#### **Roof Load**

Live (lbs): 25 PSF  
Dead (lbs): 15 PSF  
Wind: 85 MPH

#### **Design Features**

- Bonus Space @ Upper Floor
- Den/Office
- Front and Rear Porch
- Great Room
- Laundry Room @ Upper & Lower Floor
- Master Bedroom @ Upper Floor Rear
- View Lot - Rear