



CRESCENT SKY - PLAN M3610A3F-0

Total Area: 3610 sq. ft.
Garage Area: 830 sq. ft.
Garage Area: 830 sq. ft.
Garage Size: 3
Stories: 2
Bedrooms: 5
Full Baths: 3
Half Baths: 1
Width: 64'-0"
Depth: 51'-6"
Height: 26'-0"
Foundation: Crawl Space



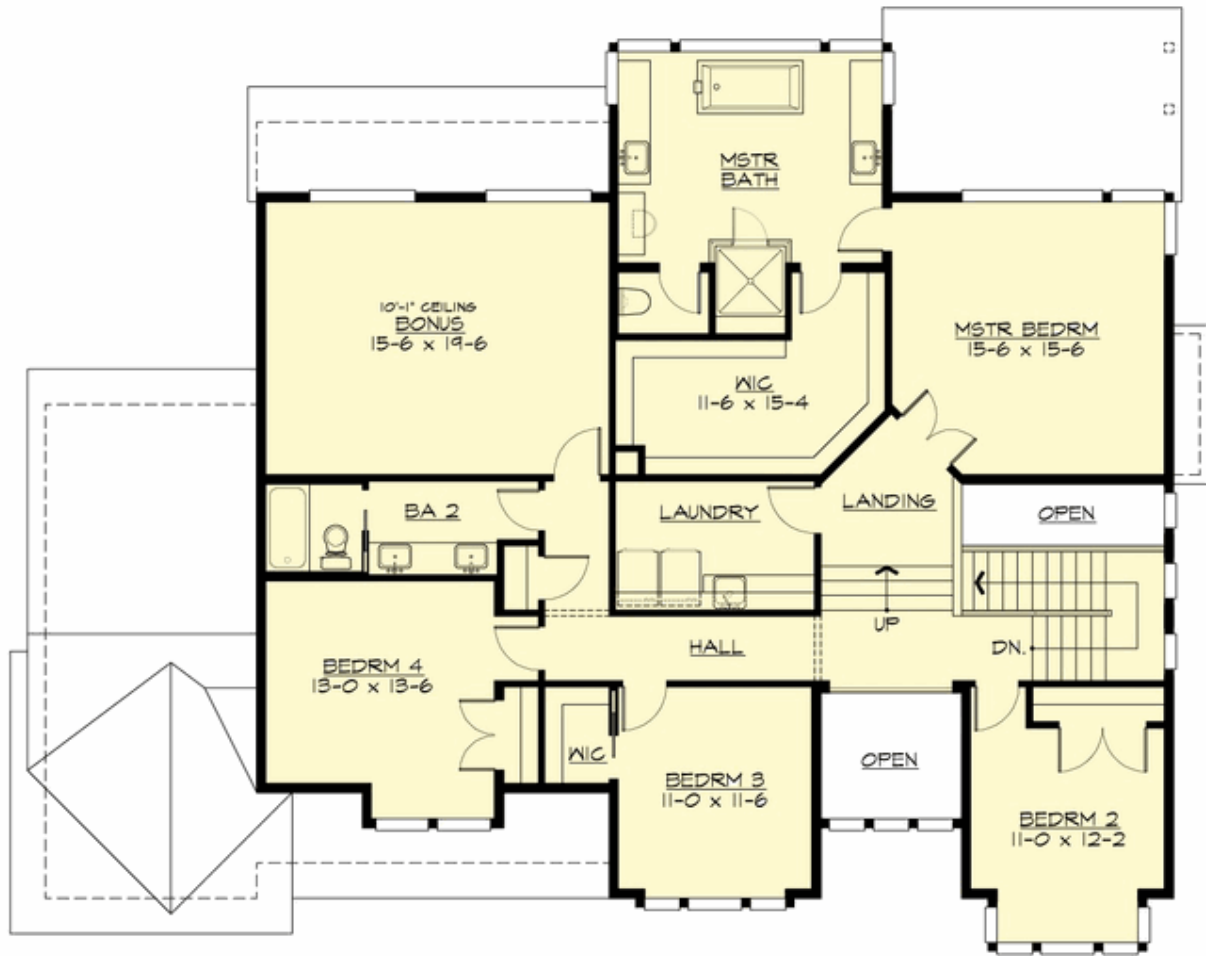
CRESCENT SKY - PLAN M3610A3F-0

MAIN FLOOR



CRESCENT SKY - PLAN M3610A3F-0

UPPER FLOOR





CRESCENT SKY - PLAN M3610A3F-0

PLAN DETAILS

Area Summary

Total Area: 3610 sq. ft.
Main Floor: 1685 sq. ft.
Upper Floor: 1925 sq. ft.
Garage Floor: 830 sq. ft.

General Information

Stories: 2
Width: 64'-0"
Depth: 51'-6"
Height: 26'-0"

Architectural Style

Contemporary
Modern
Prairie

Number of Rooms

Bedrooms: 5
Full Baths: 3
Half Baths: 1

Garage

Garage Size: 3
Garage Door Location: Front

Roof Pitches

Primary: 4:12
Secondary: 3:12

Wall Heights

Main: 9'-0"
Upper: 8'-0"

Foundation Type

Crawl Space

Roof Framing

Combination

Floor Load

Live (lbs): 40 PSF
Dead (lbs): 10 PSF

Roof Load

Live (lbs): 25 PSF
Dead (lbs): 15 PSF
Wind: 85 MPH

Design Features

- Bonus Space @ Upper Floor
- Den/Office
- Great Room
- Laundry Room @ Upper Floor
- Master Bedroom @ Upper Floor Rear
- Rear Porch
- View Lot - Rear
- Wide Lot