



## VIEWRIDGE CREST - PLAN R4075B3F-0DB

Total Area: 4585 sq. ft.  
Garage Area: 710 sq. ft.  
Garage Area: 710 sq. ft.  
Garage Size: 3  
Stories: 2  
Bedrooms: 4  
Full Baths: 3  
Half Baths: 1  
Width: 65'-0"  
Depth: 72'-0"  
Height: 17'-0"  
Foundation: Daylight Basement



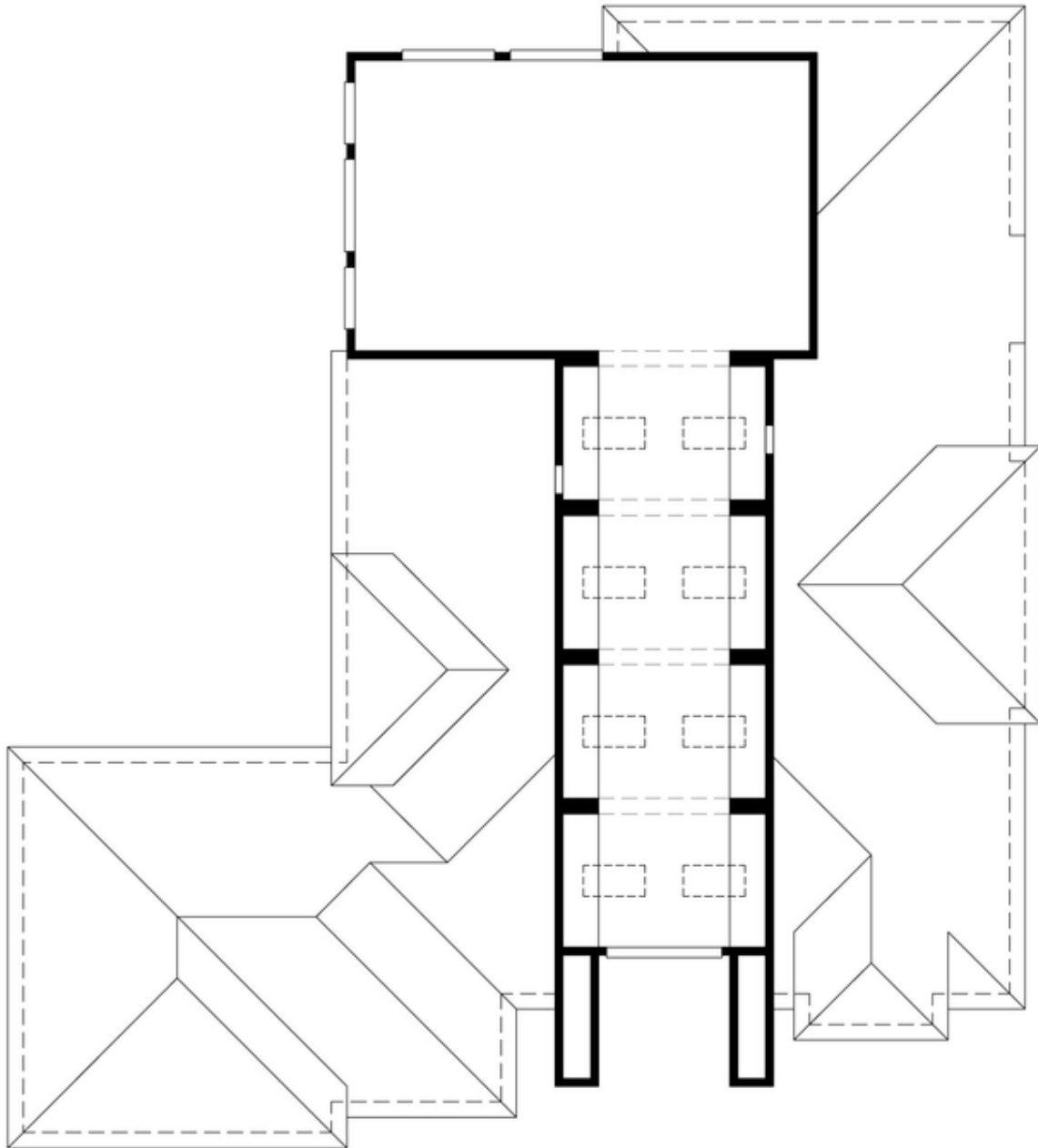
## VIEWRIDGE CREST - PLAN R4075B3F-0DB

### MAIN FLOOR



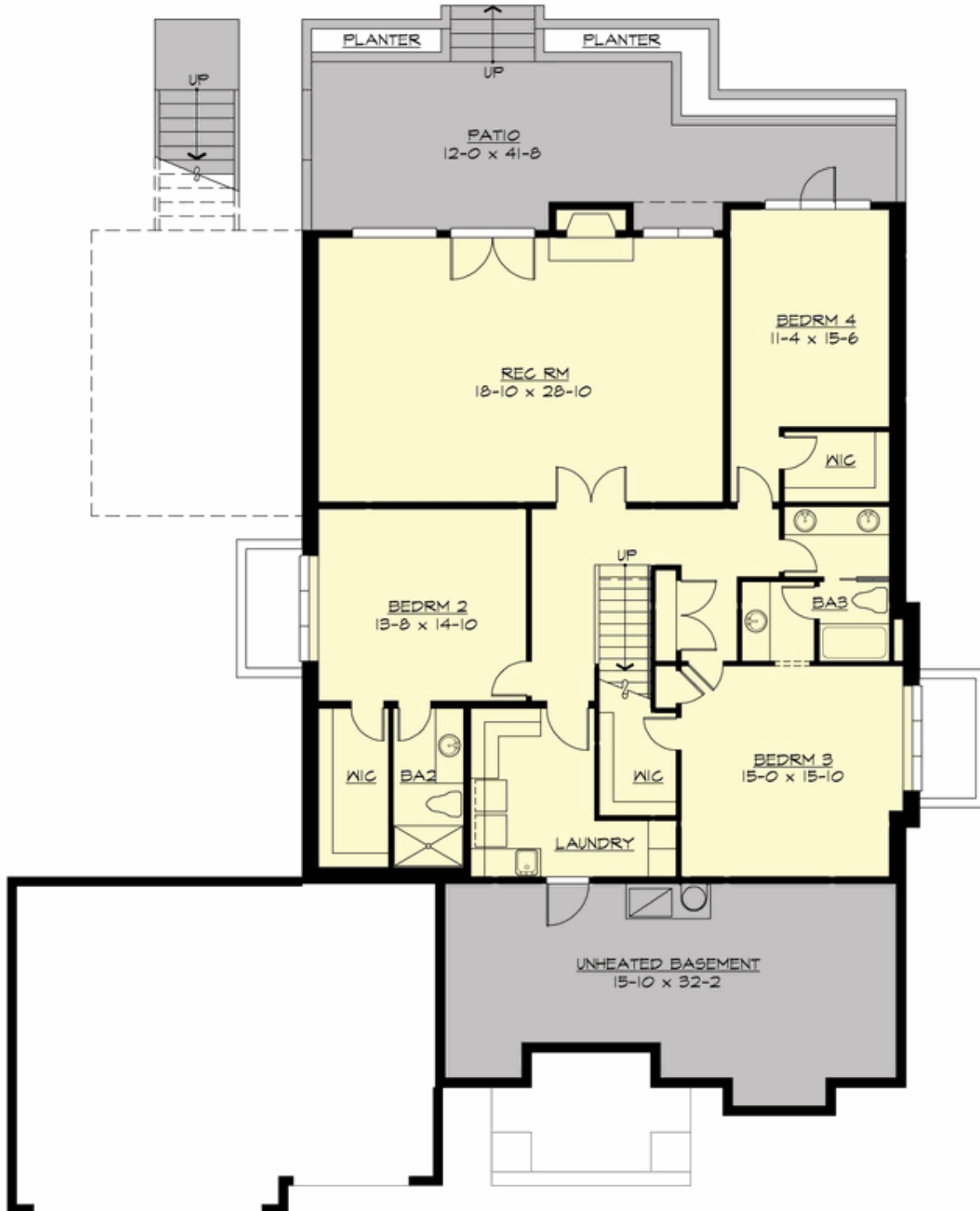
**VIEWRIDGE CREST - PLAN R4075B3F-0DB**

**UPPER FLOOR**



## VIEWRIDGE CREST - PLAN R4075B3F-0DB

### LOWER FLOOR





## VIEWRIDGE CREST - PLAN R4075B3F-0DB

### PLAN DETAILS

#### Area Summary

Total Area: 4585 sq. ft.  
Main Floor: 2543 sq. ft.  
Upper Floor: 2042 sq. ft.  
Garage Floor: 710 sq. ft.

#### General Information

Stories: 2  
Width: 65'-0"  
Depth: 72'-0"  
Height: 17'-0"

#### Architectural Style

Craftsman  
Northwest  
Shingle

#### Number of Rooms

Bedrooms: 4  
Full Baths: 3  
Half Baths: 1

#### Garage

Garage Size: 3  
Garage Door Location: Front

#### Roof Pitches

Primary: 4:12

#### Wall Heights

Main: 9'-0"  
Lower: 9'-0"

#### Foundation Type

Daylight Basement

#### Roof Framing

Trusses

#### Floor Load

Live (lbs): 40 PSF  
Dead (lbs): 10 PSF

#### Roof Load

Live (lbs): 25 PSF  
Dead (lbs): 15 PSF  
Wind: 85 MPH

#### Design Features

- Bonus Space @ Lower Floor
- Den/Office
- Front and Rear Porch
- Great Room
- Laundry Room @ Lower Floor
- Master Bedroom @ Main Floor Front
- View Lot - Rear