



MACMULLEN - PLAN M6313A3AFE-0PB

Total Area: 6313 sq. ft.
Garage Area: 839 sq. ft.
Garage Area: 839 sq. ft.
Garage Size: 3
Stories: 3
Bedrooms: 4
Full Baths: 3
Half Baths: 3
Width: 93'-0"
Depth: 81'-6"
Height: 27'-6"
Foundation: Cellar Basement



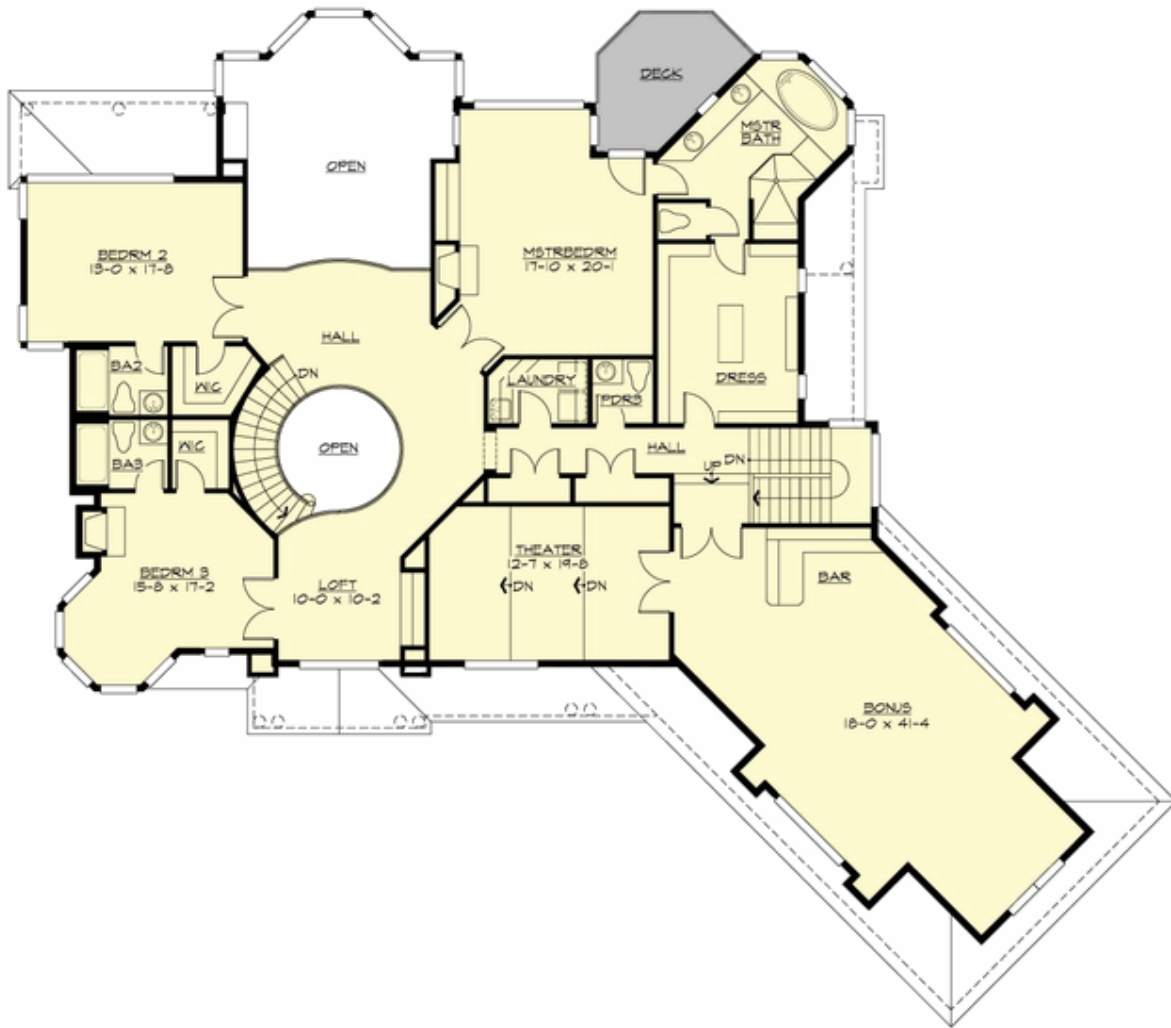
MACMULLEN - PLAN M6313A3AFE-0PB

MAIN FLOOR



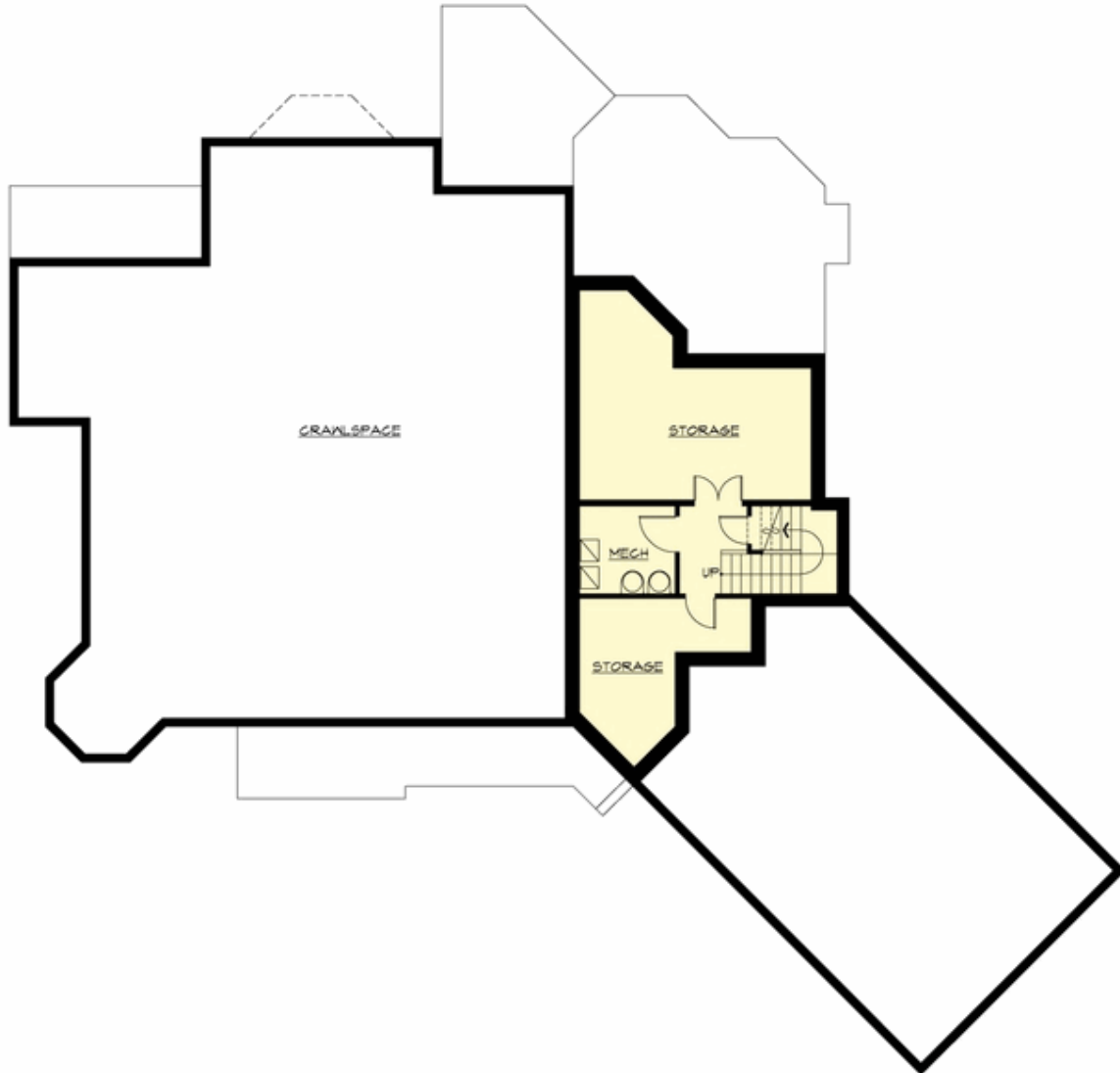
MACMULLEN - PLAN M6313A3AFE-0PB

UPPER FLOOR



MACMULLEN - PLAN M6313A3AFE-0PB

LOWER FLOOR





MACMULLEN - PLAN M6313A3AFE-0PB

PLAN DETAILS

Area Summary

Total Area:	6313 sq. ft.
Main Floor:	2687 sq. ft.
Upper Floor:	2942 sq. ft.
Lower Floor:	684 sq. ft.
Garage Floor:	839 sq. ft.

General Information

Stories:	3
Width:	93'-0"
Depth:	81'-6"
Height:	27'-6"

Architectural Style

Cape Cod
Hampton
Shingle

Number of Rooms

Bedrooms:	4
Full Baths:	3
Half Baths:	3

Garage

Garage Size:	3
Garage Door Location:	Front

Roof Pitches

Primary:	5:12
Secondary:	7:12

Wall Heights

Main:	10'-0"
Upper:	9'-0"
Lower:	9'-0"

Foundation Type

Cellar Basement

Roof Framing

Trusses

Floor Load

Live (lbs):	40 PSF
Dead (lbs):	10 PSF

Roof Load

Live (lbs):	25 PSF
Dead (lbs):	15 PSF
Wind:	85 MPH

Design Features

- Bonus Space @ Upper Floor
- Den/Office
- Front and Rear Porch
- Great Room
- Laundry Room @ Upper Floor
- Luxury Plan
- Master Bedroom @ Upper Floor Rear
- Wide Lot