



ELDERBERRY LODGE - PLAN M4438A3ST-0DB

Total Area: 4438 sq. ft.
Garage Area: 708 sq. ft.
Garage Area: 708 sq. ft.
Garage Size: 3
Stories: 3
Bedrooms: 5
Full Baths: 6
Half Baths: 1
Width: 87'-0"
Depth: 68'-0"
Height: 27'-0"
Foundation: Daylight Basement



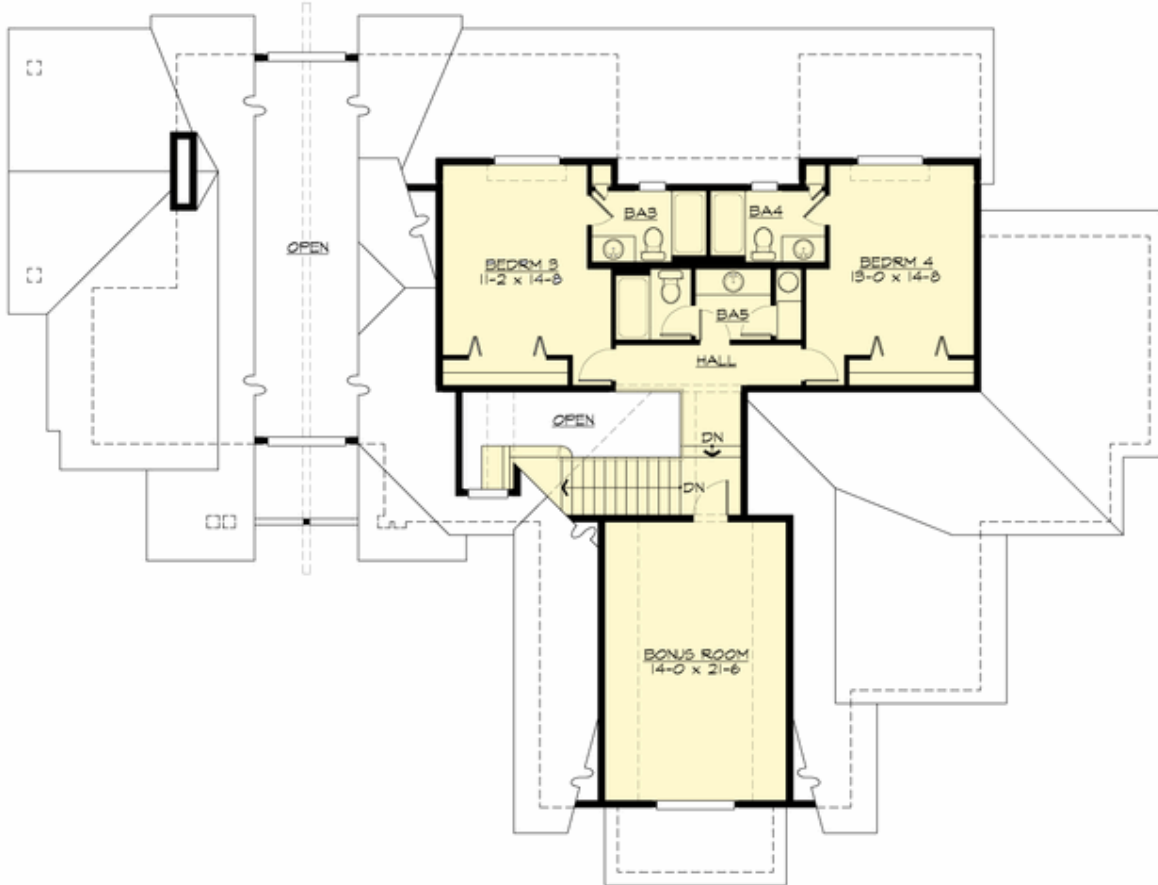
ELDERBERRY LODGE - PLAN M4438A3ST-0DB

MAIN FLOOR



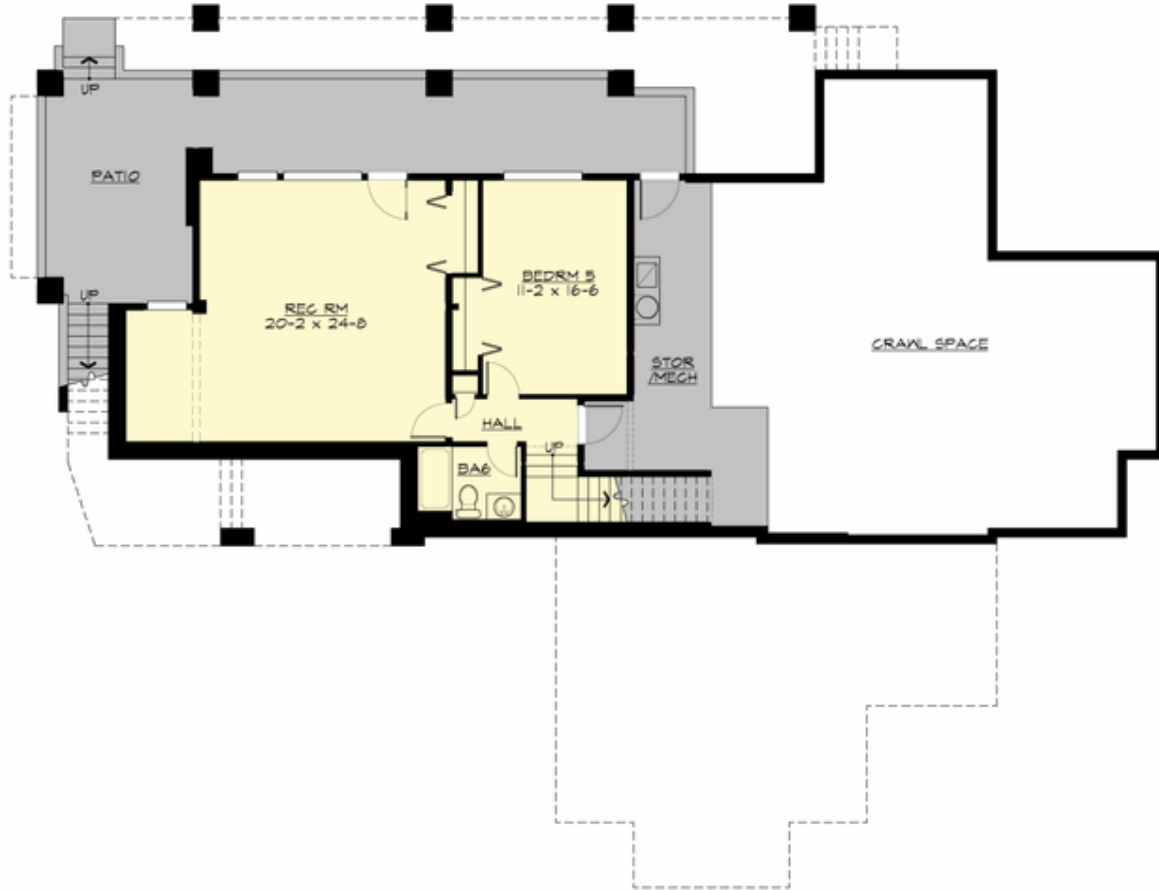
ELDERBERRY LODGE - PLAN M4438A3ST-0DB

UPPER FLOOR



ELDERBERRY LODGE - PLAN M4438A3ST-0DB

LOWER FLOOR





ELDERBERRY LODGE - PLAN M4438A3ST-0DB

PLAN DETAILS

Area Summary

Total Area:	4438 sq. ft.
Main Floor:	2382 sq. ft.
Upper Floor:	1114 sq. ft.
Lower Floor:	942 sq. ft.
Garage Floor:	708 sq. ft.

General Information

Stories:	3
Width:	87'-0"
Depth:	68'-0"
Height:	27'-0"

Architectural Style

Number of Rooms

Bedrooms:	5
Full Baths:	6
Half Baths:	1

Garage

Garage Size:	3
Garage Door Location:	Side
Garage Type:	Tandem

Roof Pitches

Primary:	10:12
Secondary:	4:12

Wall Heights

Main:	9'-0"
Upper:	9'-0"
Lower:	9'-0"

Foundation Type

Daylight Basement

Roof Framing

Combination

Floor Load

Live (lbs):	40 PSF
Dead (lbs):	10 PSF

Roof Load

Live (lbs):	140 PSF
Dead (lbs):	15 PSF
Wind:	85 MPH

Design Features

- Bonus Space @ Upper Floor & Lower Floor
- Front and Rear Porch
- Great Room
- Laundry Room @ Main Floor
- Master Bedroom @ Main Floor Rear
- Suncadia Collection