



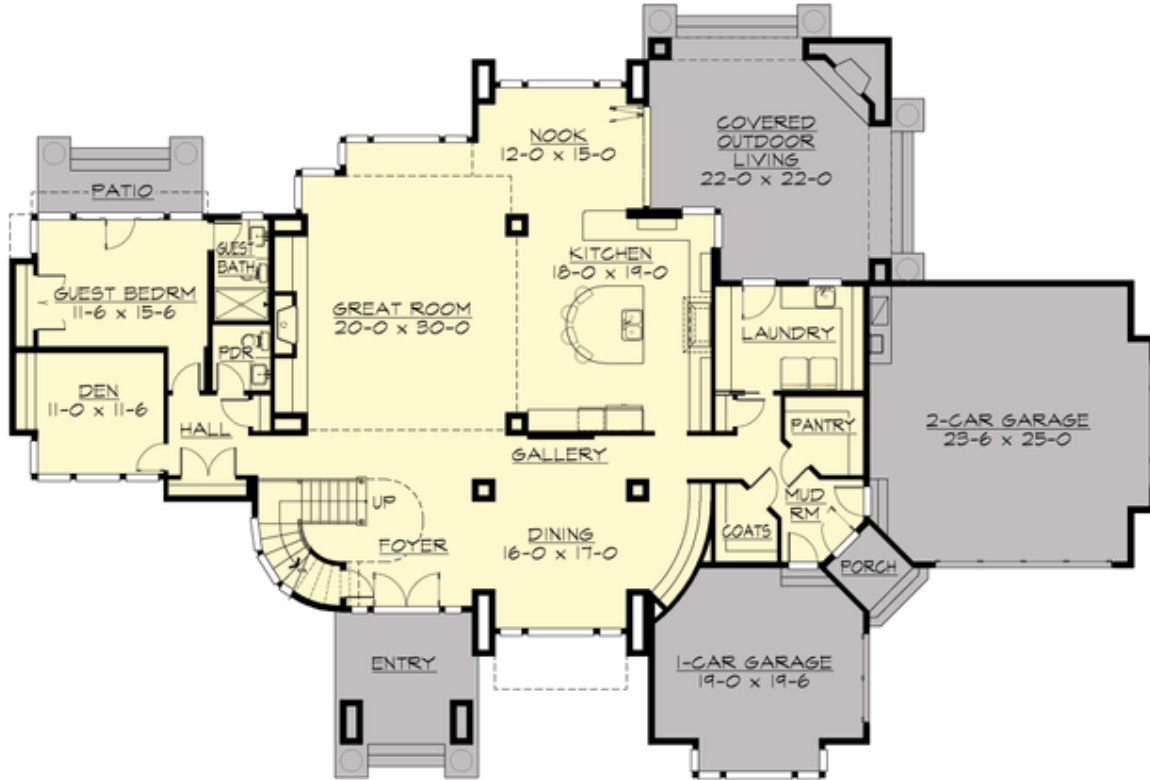
## PRAIRIETOWN - PLAN M4555A2F1S-0

Total Area: 4555 sq. ft.  
Garage Area: 980 sq. ft.  
Garage Area: 980 sq. ft.  
Garage Size: 3  
Stories: 2  
Bedrooms: 4  
Full Baths: 4  
Half Baths: 1  
Width: 104'-0"  
Depth: 70'-0"  
Height: 28'-0"  
Foundation: Crawl Space



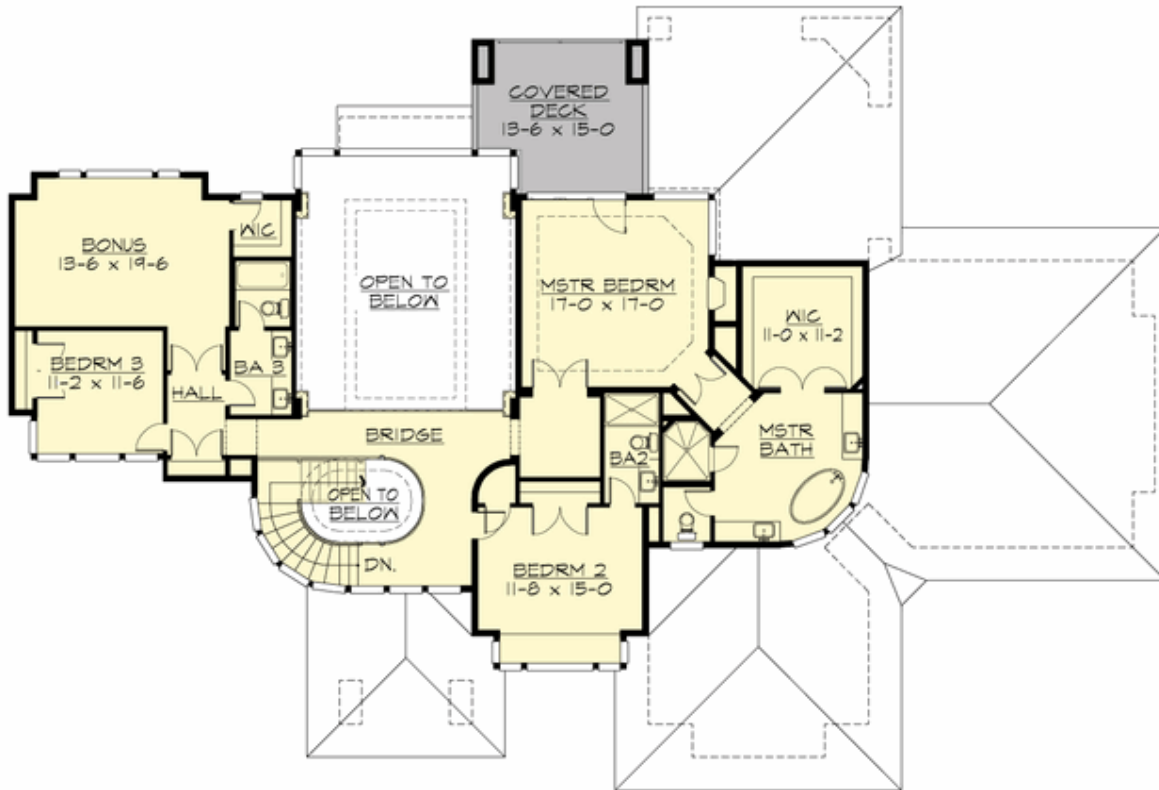
## PRAIRIETOWN - PLAN M4555A2F1S-0

### MAIN FLOOR



## PRAIRIETOWN - PLAN M4555A2F1S-0

### UPPER FLOOR





## PRAIRIETOWN - PLAN M4555A2F1S-0

### PLAN DETAILS

#### Area Summary

Total Area:	4555 sq. ft.
Main Floor:	2665 sq. ft.
Upper Floor:	1890 sq. ft.
Garage Floor:	980 sq. ft.

#### General Information

Stories:	2
Width:	104'-0"
Depth:	70'-0"
Height:	28'-0"

#### Architectural Style

Contemporary  
Modern  
Prairie

#### Number of Rooms

Bedrooms:	4
Full Baths:	4
Half Baths:	1

#### Garage

Garage Size:	3
Garage Door Location:	Front

#### Roof Pitches

Primary:	4:12
Secondary:	2:12

#### Wall Heights

Main:	10'-0"
Upper:	9'-0"
3rd Floor:	0'-0"
Lower:	0'-0"

#### Foundation Type

Crawl Space

#### Roof Framing

Trusses

#### Floor Load

Live (lbs):	40 PSF
Dead (lbs):	10 PSF

#### Roof Load

Live (lbs):	25 PSF
Dead (lbs):	15 PSF
Wind:	85 MPH

#### Design Features

- Best Selling Plan
- Bonus Space @ Upper Floor
- Den/Office
- Great Room
- Laundry Room @ Main Floor
- Master Bedroom @ Upper Floor Rear
- Rear Porch
- View Lot - Rear
- Wide Lot