

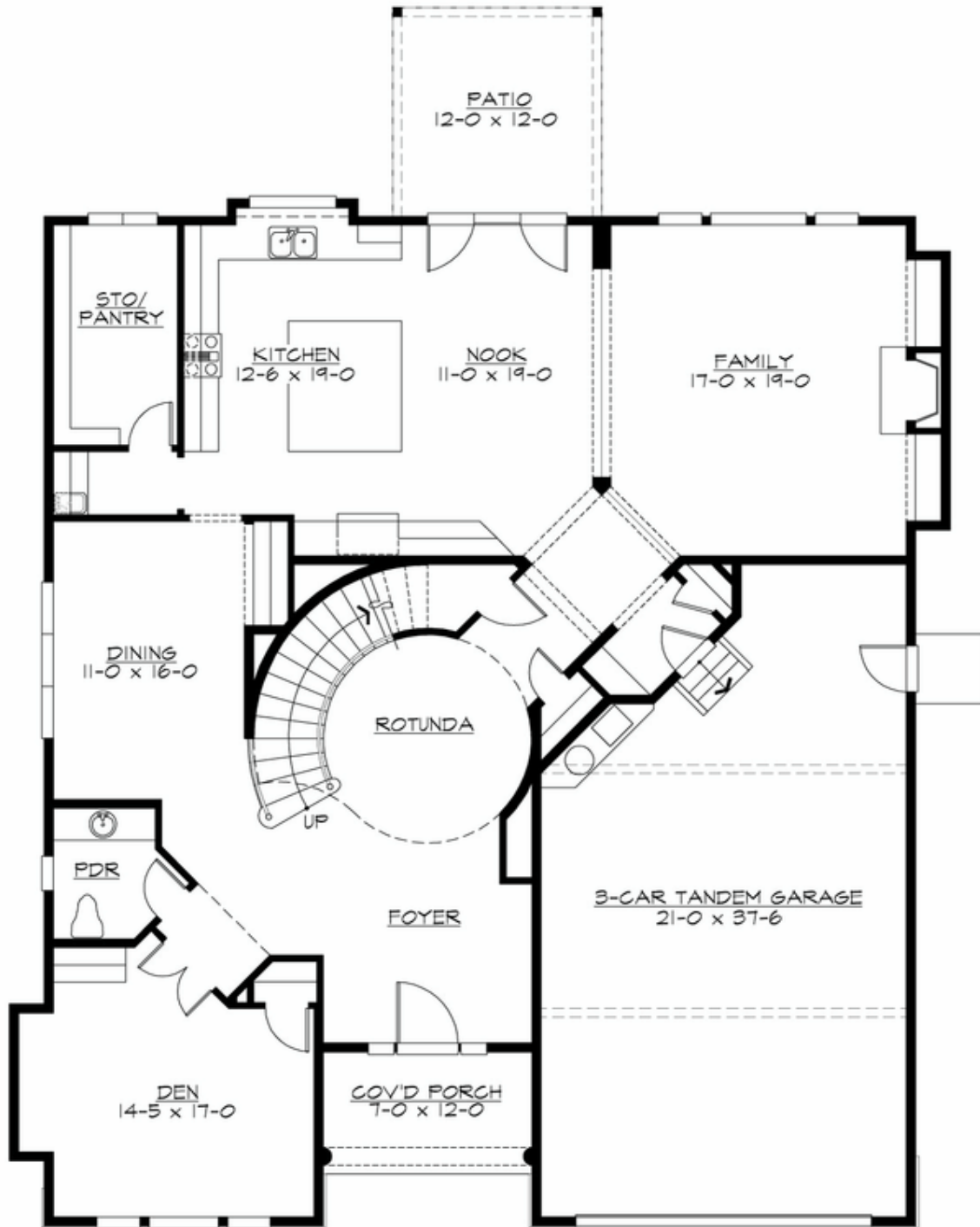
## ACACIA - PLAN M3555D3FT-14

Total Area: 5089 sq. ft.  
Garage Area: 954 sq. ft.  
Garage Area: 954 sq. ft.  
Garage Size: 3  
Stories: 2  
Bedrooms: 5  
Full Baths: 4  
Half Baths: 1  
Width: 64'-0"  
Depth: 70'-0"  
Height: 33'-6"  
Foundation: Crawl Space



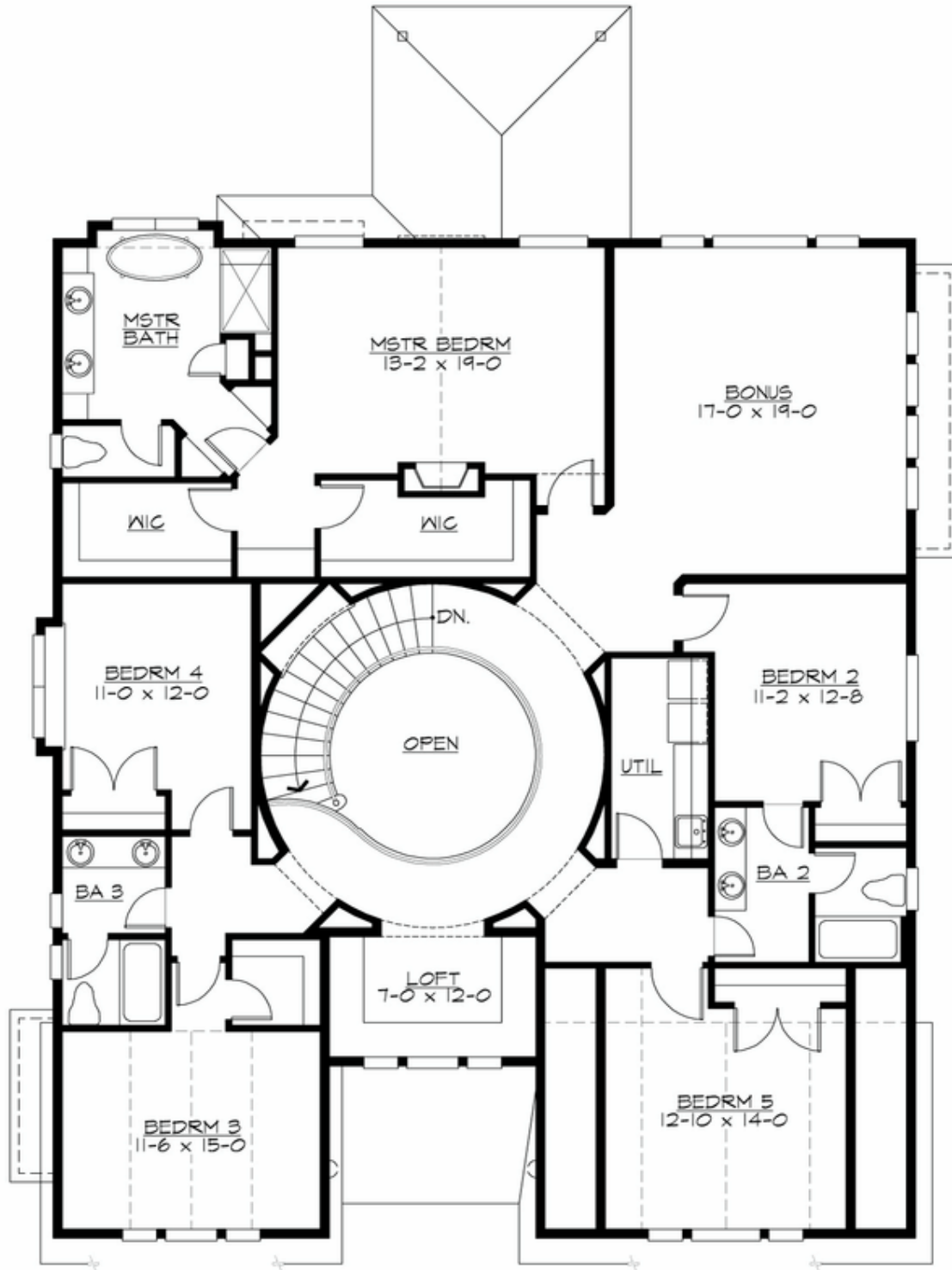
## ACACIA - PLAN M3555D3FT-14

### MAIN FLOOR



**ACACIA - PLAN M3555D3FT-14**

**UPPER FLOOR**





## ACACIA - PLAN M3555D3FT-14

### PLAN DETAILS

#### Area Summary

Total Area: 5089 sq. ft.  
Main Floor: 2382 sq. ft.  
Upper Floor: 2707 sq. ft.  
Garage Floor: 954 sq. ft.

#### General Information

Stories: 2  
Width: 64'-0"  
Depth: 70'-0"  
Height: 33'-6"

#### Architectural Style

Hampton  
Shingle  
Traditional

#### Number of Rooms

Bedrooms: 5  
Full Baths: 4  
Half Baths: 1

#### Garage

Garage Size: 3  
Garage Door Location: Front  
Garage Type: Tandem

#### Roof Pitches

Primary: 20:12  
Secondary: 7:12

#### Wall Heights

Main: 10'-0"  
Upper: 9'-0"  
3rd Floor: 0'-0"  
Lower: 0'-0"

#### Foundation Type

Crawl Space

#### Roof Framing

Trusses

#### Floor Load

Live (lbs): 40 PSF  
Dead (lbs): 10 PSF

#### Roof Load

Live (lbs): 25 PSF  
Dead (lbs): 15 PSF  
Wind: 85 MPH

#### Design Features

- Bonus Space @ Upper Floor
- Den/Office
- Front and Rear Porch
- Great Room
- Laundry Room @ Main Floor
- Master Bedroom @ Upper Floor Rear
- View Lot - Rear