



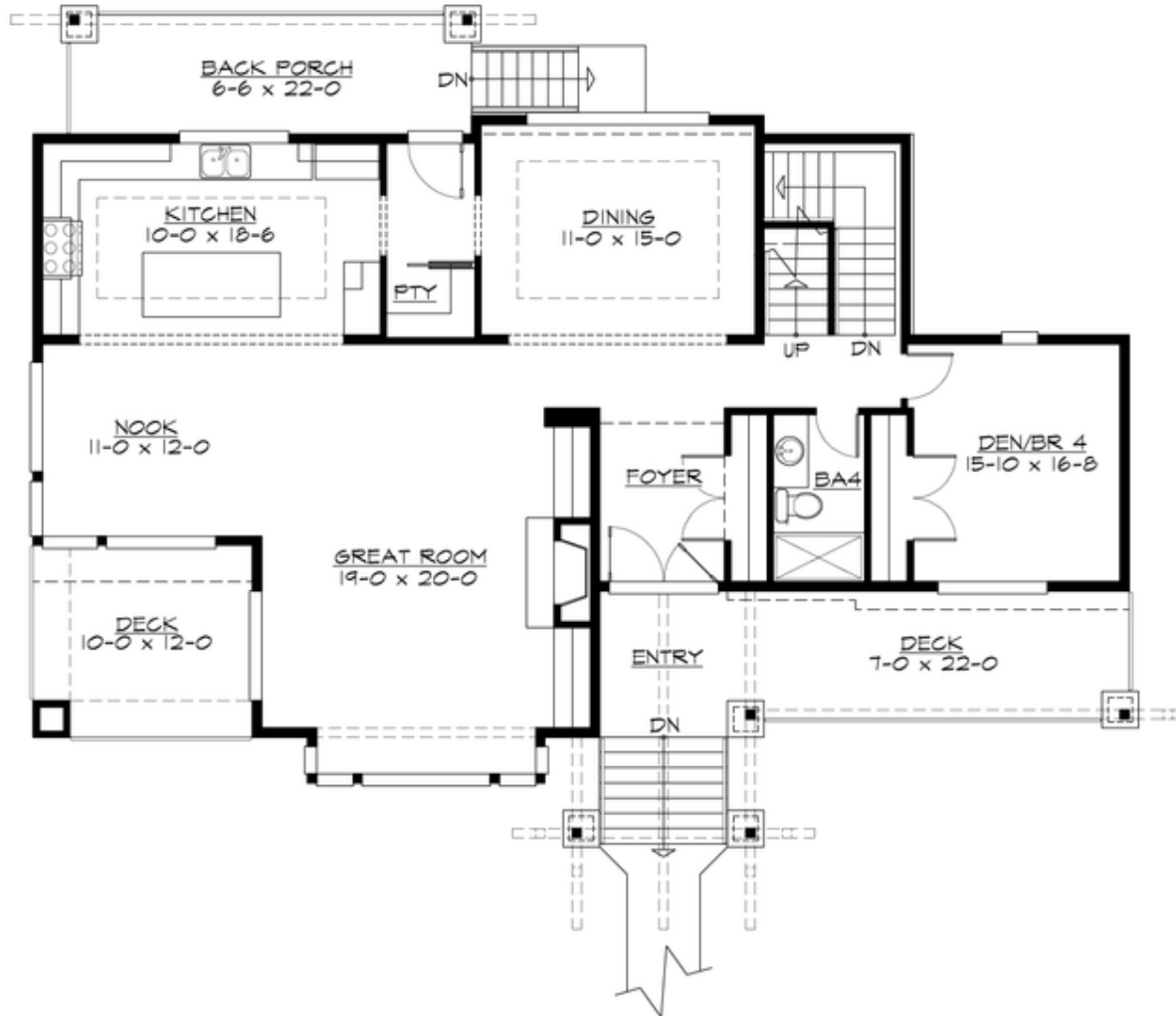
## SALTAIRE - PLAN M4031A2FU-0FB

Total Area: 4031 sq. ft.  
Garage Area: 500 sq. ft.  
Garage Area: 500 sq. ft.  
Garage Size: 2  
Stories: 3  
Bedrooms: 5  
Full Baths: 5  
Width: 60'-0"  
Depth: 46'-0"  
Height: 25'-0"  
Foundation: Daylight Basement



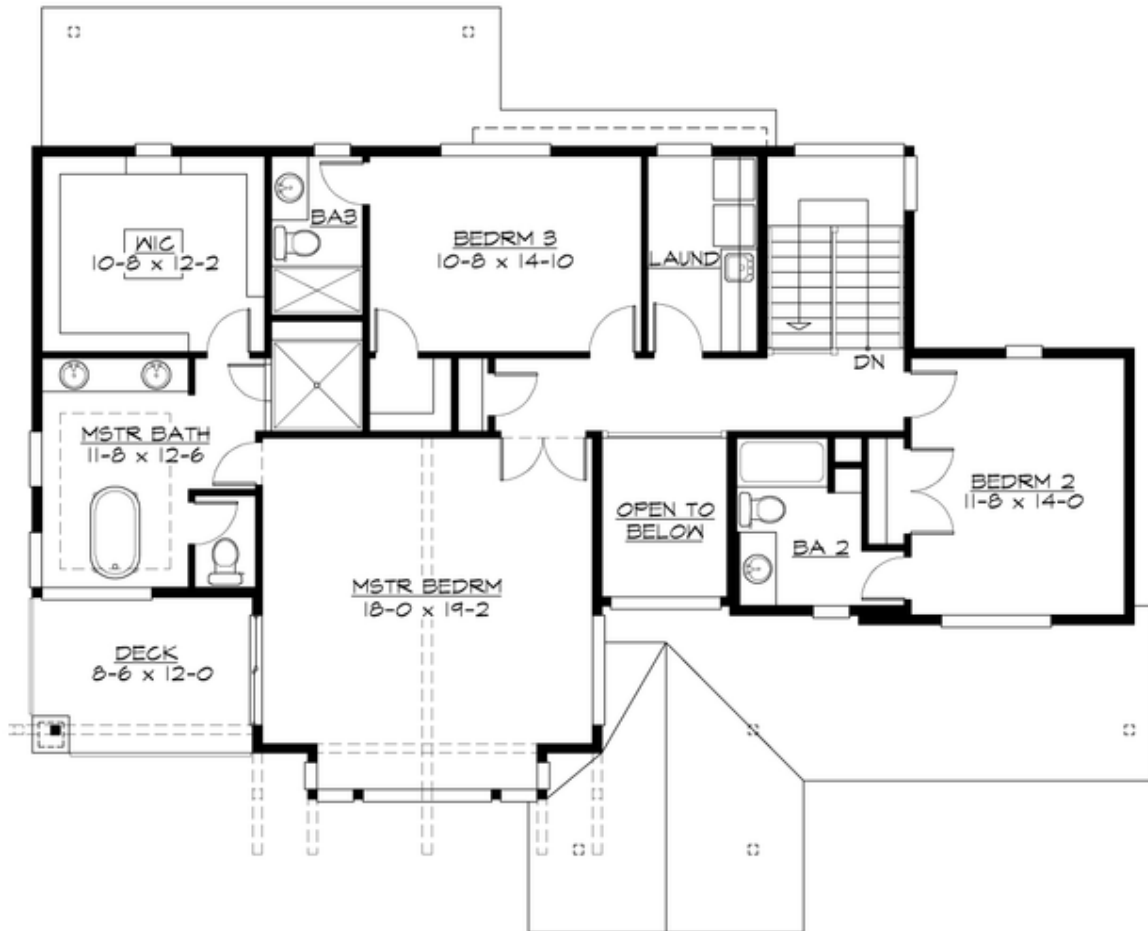
## SALTAIRE - PLAN M4031A2FU-0FB

### MAIN FLOOR



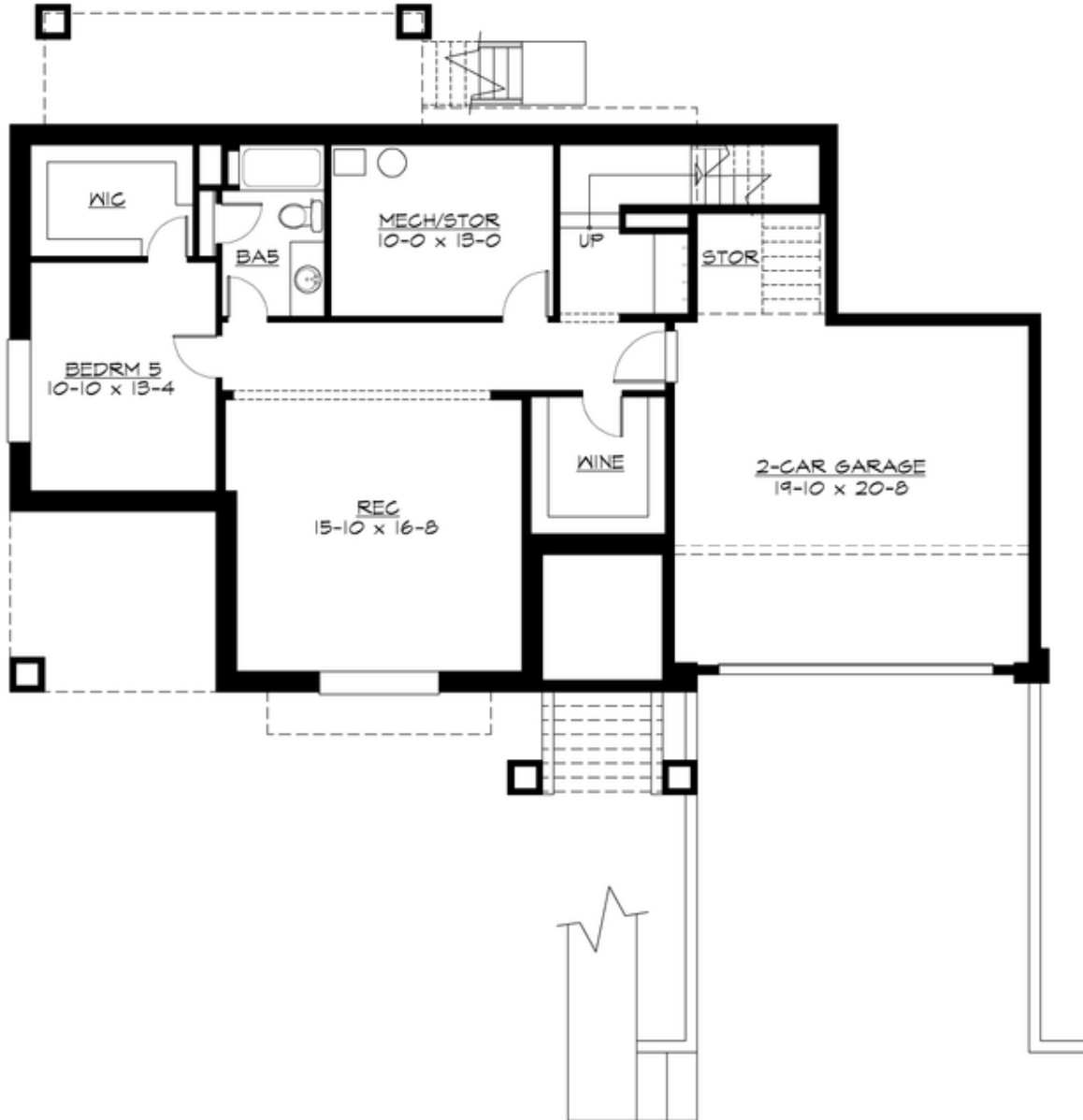
## SALTAIRE - PLAN M4031A2FU-0FB

### UPPER FLOOR



## SALTAIRE - PLAN M4031A2FU-0FB

### LOWER FLOOR





## SALTAIRE - PLAN M4031A2FU-0FB

### PLAN DETAILS

#### Area Summary

Total Area:	4031 sq. ft.
Main Floor:	1460 sq. ft.
Upper Floor:	1425 sq. ft.
Lower Floor:	1146 sq. ft.
Garage Floor:	500 sq. ft.

#### General Information

Stories:	3
Width:	60'-0"
Depth:	46'-0"
Height:	25'-0"

#### Architectural Style

Contemporary  
Craftsman  
Northwest

#### Number of Rooms

Bedrooms:	5
Full Baths:	5

#### Garage

Garage Size:	2
Garage Door Location:	Front
Garage Type:	Under

#### Roof Pitches

Primary:	4:12
Secondary:	3:12

#### Wall Heights

Main:	10'-0"
Upper:	9'-0"
3rd Floor:	0'-0"
Lower:	9'-0"

#### Foundation Type

Daylight Basement

#### Roof Framing

Combination

#### Floor Load

Live (lbs):	40 PSF
Dead (lbs):	10 PSF

#### Roof Load

Live (lbs):	25 PSF
Dead (lbs):	15 PSF
Wind:	85 MPH

#### Design Features

- Bonus Space @ Lower Floor
- Front and Rear Porch
- Great Room
- Laundry Room @ Upper Floor
- Master Bedroom @ Upper Floor Front
- Wide Lot