



## SKYBRAKER - PLAN M3595A4FT-0

Total Area: 3714 sq. ft.  
Garage Area: 820 sq. ft.  
Garage Area: 820 sq. ft.  
Garage Size: 4  
Stories: 2  
Bedrooms: 5  
Full Baths: 3  
Half Baths: 1  
Width: 56'-0"  
Depth: 65'-0"  
Height: 25'-0"  
Foundation: Crawl Space



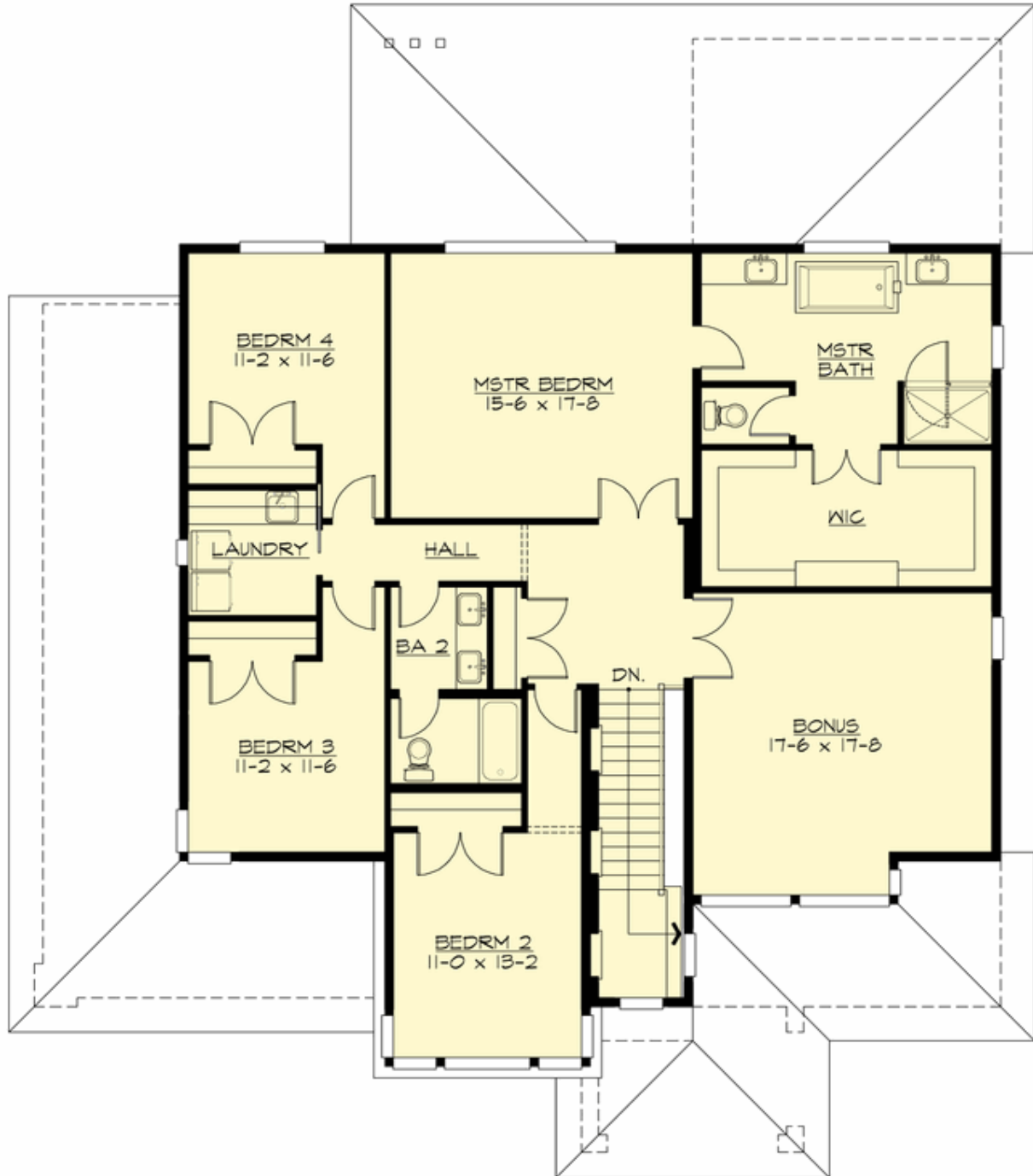
## SKYBRAKER - PLAN M3595A4FT-0

### MAIN FLOOR



**SKYBRAKER - PLAN M3595A4FT-0**

**UPPER FLOOR**





## SKYBRAKER - PLAN M3595A4FT-0

### PLAN DETAILS

#### Area Summary

Total Area: 3714 sq. ft.  
Main Floor: 1862 sq. ft.  
Upper Floor: 1852 sq. ft.  
Garage Floor: 820 sq. ft.

#### General Information

Stories: 2  
Width: 56'-0"  
Depth: 65'-0"  
Height: 25'-0"

#### Architectural Style

Contemporary  
Modern  
Prarie

#### Number of Rooms

Bedrooms: 5  
Full Baths: 3  
Half Baths: 1

#### Garage

Garage Size: 4  
Garage Door Location: Front  
Garage Type: Tandem

#### Roof Pitches

Primary: 4:12  
Secondary: 3:12

#### Wall Heights

Main: 9'-0"  
Upper: 8'-0"  
3rd Floor: 0'-0"  
Lower: 0'-0"

#### Foundation Type

Crawl Space

#### Roof Framing

Trusses

#### Floor Load

Live (lbs): 40 PSF  
Dead (lbs): 10 PSF

#### Roof Load

Live (lbs): 25 PSF  
Dead (lbs): 15 PSF  
Wind: 85 MPH

#### Design Features

- Bonus Space @ Upper Floor
- Den/Office
- Great Room
- Laundry Room @ Upper Floor
- Master Bedroom @ Upper Floor Rear
- Rear Porch
- View Lot - Rear
- Wide Lot