



## LEO - PLAN M3145A2FU-0DB

Total Area: 3145 sq. ft.  
Garage Area: 545 sq. ft.  
Garage Size: 2  
Stories: 3  
Bedrooms: 4  
Full Baths: 3  
Half Baths: 1  
Width: 28'-0"  
Depth: 52'-0"  
Height: 28'-0"  
Foundation: Daylight Basement

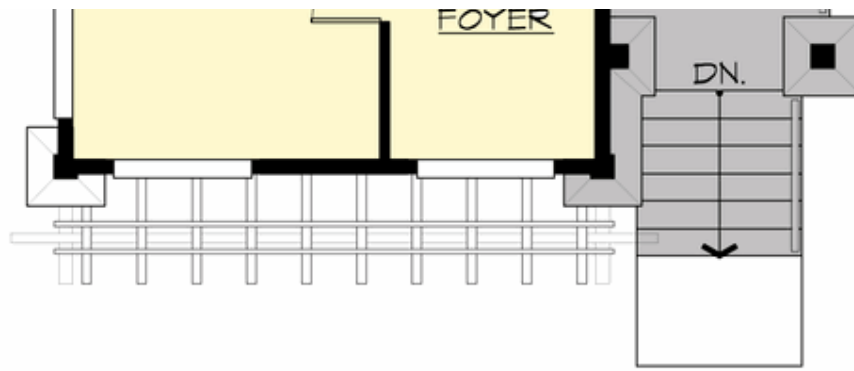


## LEO - PLAN M3145A2FU-0DB

### MAIN FLOOR

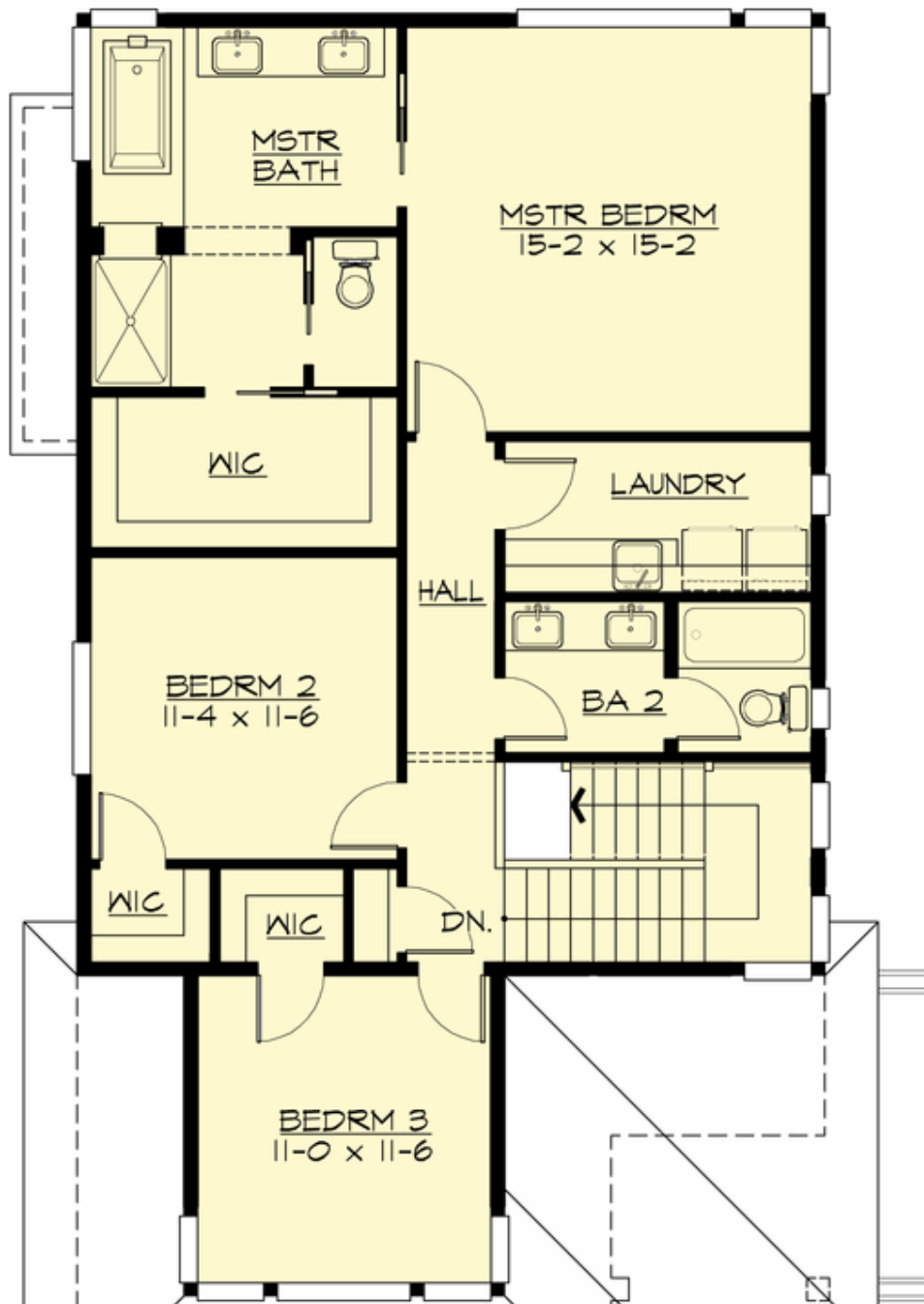


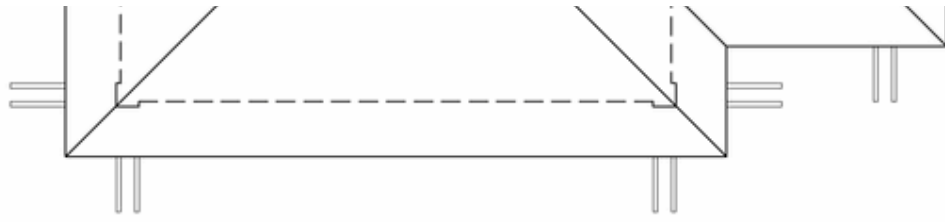
**COPYRIGHT NOTICE:** It is illegal to build this plan without a legally obtained set of prints. It is illegal to copy or redraw these plans. Violation of U.S. Copyright Laws are punishable with fines up to \$150,000. After the purchase of plans, changes may be made by a qualified professional.



**LEO - PLAN M3145A2FU-0DB**

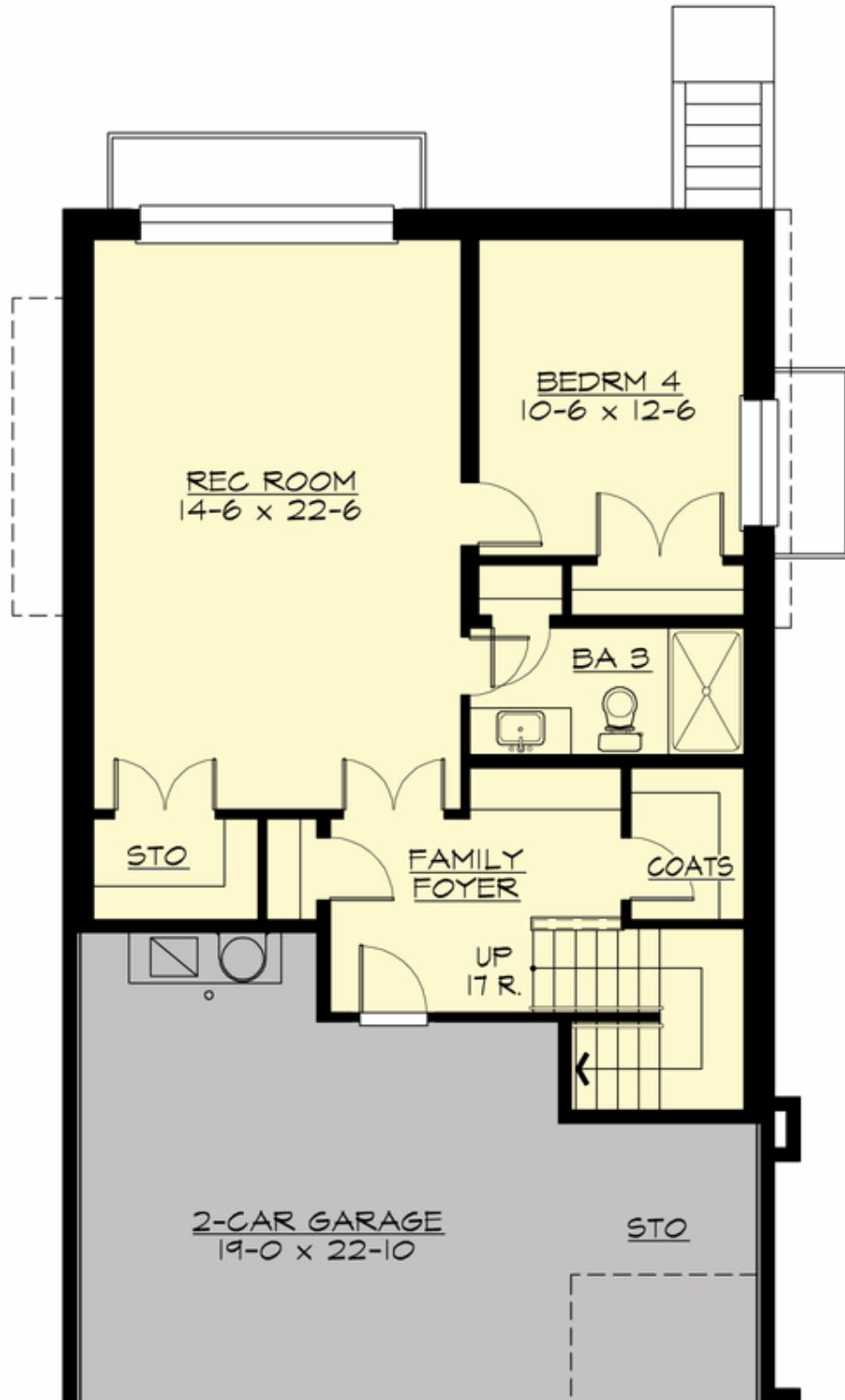
**UPPER FLOOR**

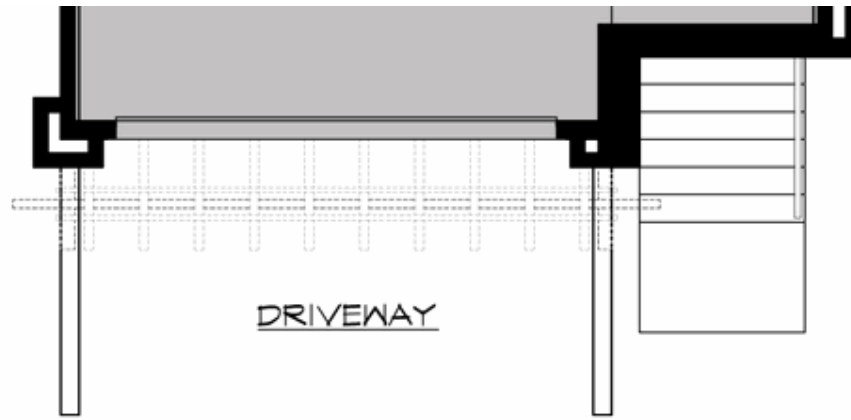




**LEO - PLAN M3145A2FU-0DB**

**LOWER FLOOR**







## LEO - PLAN M3145A2FU-0DB

### PLAN DETAILS

#### Area Summary

Total Area:	3145 sq. ft.
Main Floor:	1209 sq. ft.
Upper Floor:	1056 sq. ft.
Lower Floor:	880 sq. ft.
Garage Floor:	545 sq. ft.

#### General Information

Stories:	3
Width:	28'-0"
Depth:	52'-0"
Height:	28'-0"

#### Architectural Style

Contemporary  
Modern  
Prairie

#### Number of Rooms

Bedrooms:	4
Full Baths:	3
Half Baths:	1

#### Garage

Garage Size:	2
Garage Door Location:	Front
Garage Type:	Under

#### Roof Pitches

Primary:	4:12
----------	------

#### Wall Heights

Main:	9'-0"
Upper:	8'-0"
3rd Floor:	9'-0"
Lower:	0'-0"

#### Foundation Type

Daylight Basement

#### Roof Framing

Trusses

#### Floor Load

Live (lbs):	40 PSF
Dead (lbs):	10 PSF

#### Roof Load

Live (lbs):	25 PSF
Dead (lbs):	15 PSF
Wind:	85 MPH

#### Design Features

- Bonus Space @ Lower Floor
- Den/Office
- Great Room
- Laundry Room @ Upper Floor
- Master Bedroom @ Upper Floor Rear
- Rear Porch