



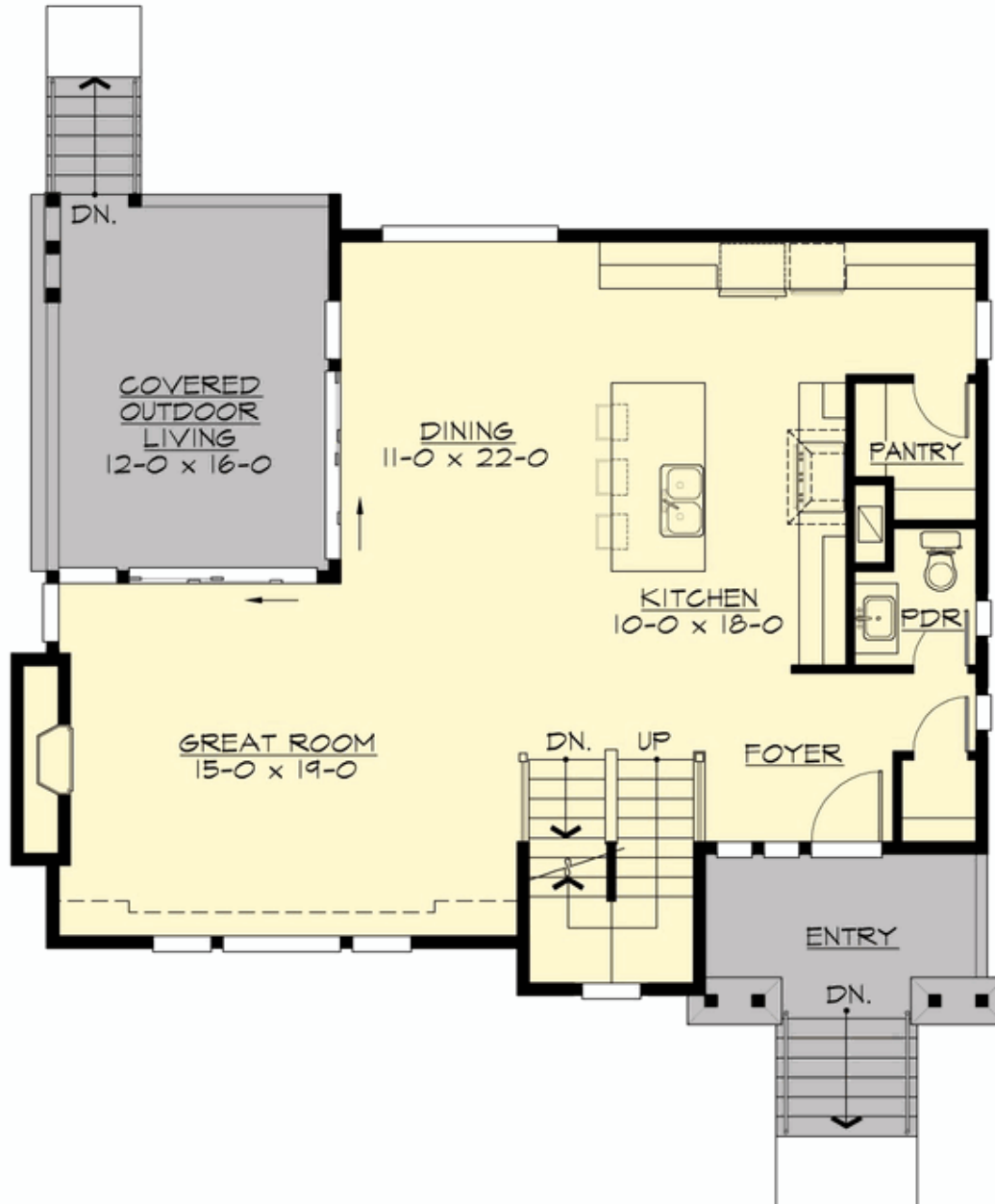
## LUNA - PLAN M2620A2FU-0DB

Total Area: 2619 sq. ft.  
Garage Area: 565 sq. ft.  
Garage Area: 565 sq. ft.  
Garage Size: 2  
Stories: 3  
Bedrooms: 4  
Full Baths: 3  
Half Baths: 1  
Width: 40'-0"  
Depth: 35'-0"  
Height: 23'-6"  
Foundation: Daylight Basement



## LUNA - PLAN M2620A2FU-0DB

### MAIN FLOOR



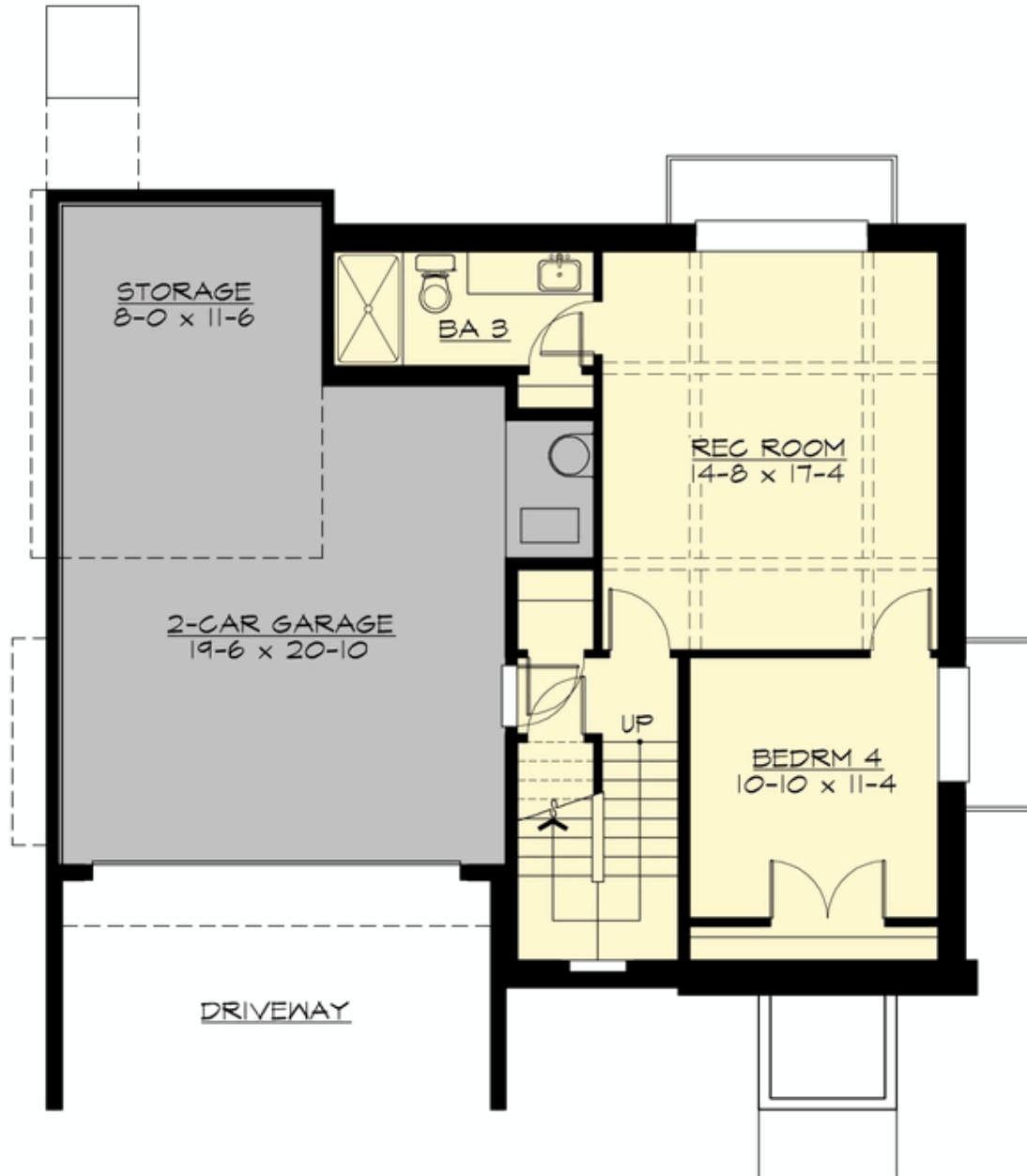
## LUNA - PLAN M2620A2FU-0DB

### UPPER FLOOR



## LUNA - PLAN M2620A2FU-0DB

### LOWER FLOOR





## LUNA - PLAN M2620A2FU-0DB

### PLAN DETAILS

#### Area Summary

Total Area:	2619 sq. ft.
Main Floor:	1010 sq. ft.
Upper Floor:	977 sq. ft.
Lower Floor:	632 sq. ft.
Garage Floor:	565 sq. ft.

#### General Information

Stories:	3
Width:	40'-0"
Depth:	35'-0"
Height:	23'-6"

#### Architectural Style

Contemporary  
Modern  
Northwest

#### Number of Rooms

Bedrooms:	4
Full Baths:	3
Half Baths:	1

#### Garage

Garage Size:	2
Garage Door Location:	Front
Garage Type:	Under

#### Roof Pitches

Primary:	4:12
Secondary:	3:12

#### Wall Heights

Main:	9'-0"
Upper:	8'-0"
3rd Floor:	0'-0"
Lower:	9'-0"

#### Foundation Type

Daylight Basement

#### Roof Framing

Combination

#### Floor Load

Live (lbs):	40 PSF
Dead (lbs):	10 PSF

#### Roof Load

Live (lbs):	25 PSF
Dead (lbs):	15 PSF
Wind:	85 MPH

#### Design Features

- Bonus Space @ Lower Floor
- Great Room
- Laundry Room @ Upper Floor
- Master Bedroom @ Upper Floor Front
- Rear Porch