



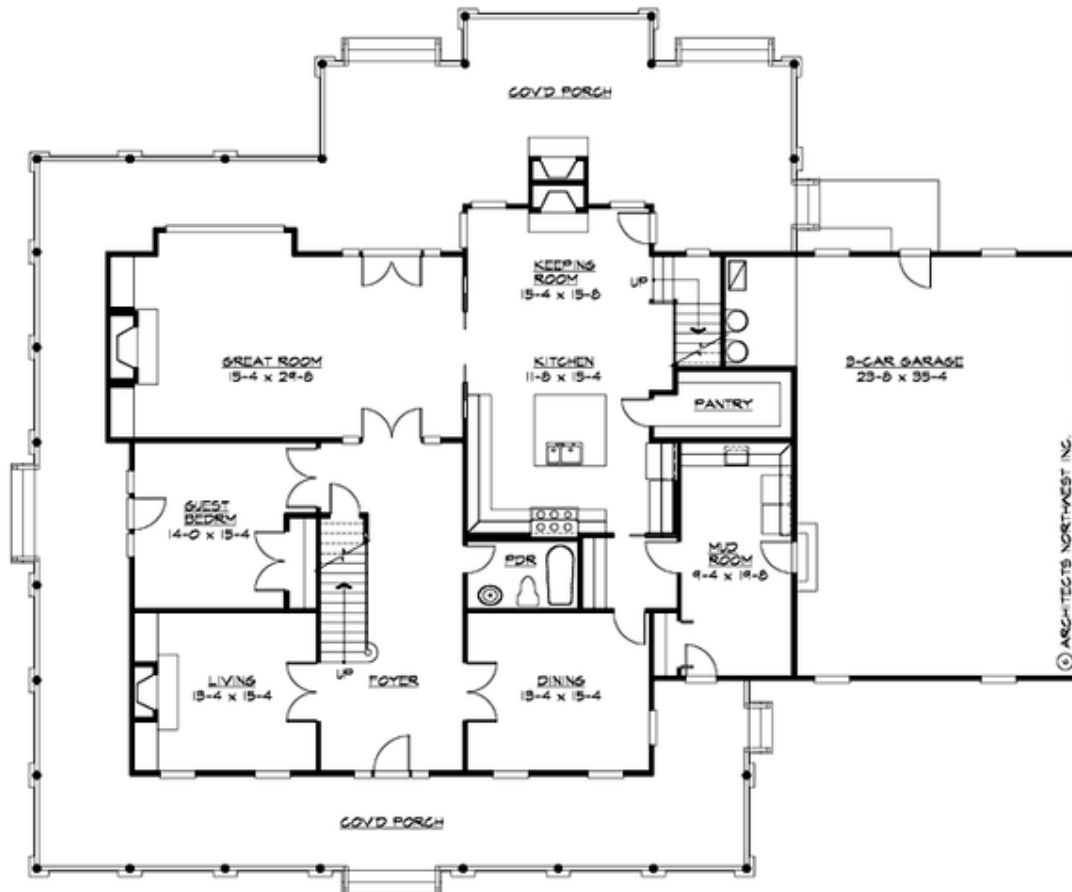
## PLEASANT GROVE - PLAN M5315A3S-0

Total Area: 5315 sq. ft.  
Garage Area: 925 sq. ft.  
Garage Area: 925 sq. ft.  
Garage Size: 3  
Stories: 2  
Bedrooms: 5  
Full Baths: 4  
Width: 88'-0"  
Depth: 72'-0"  
Height: 34'-0"  
Foundation: Crawl Space



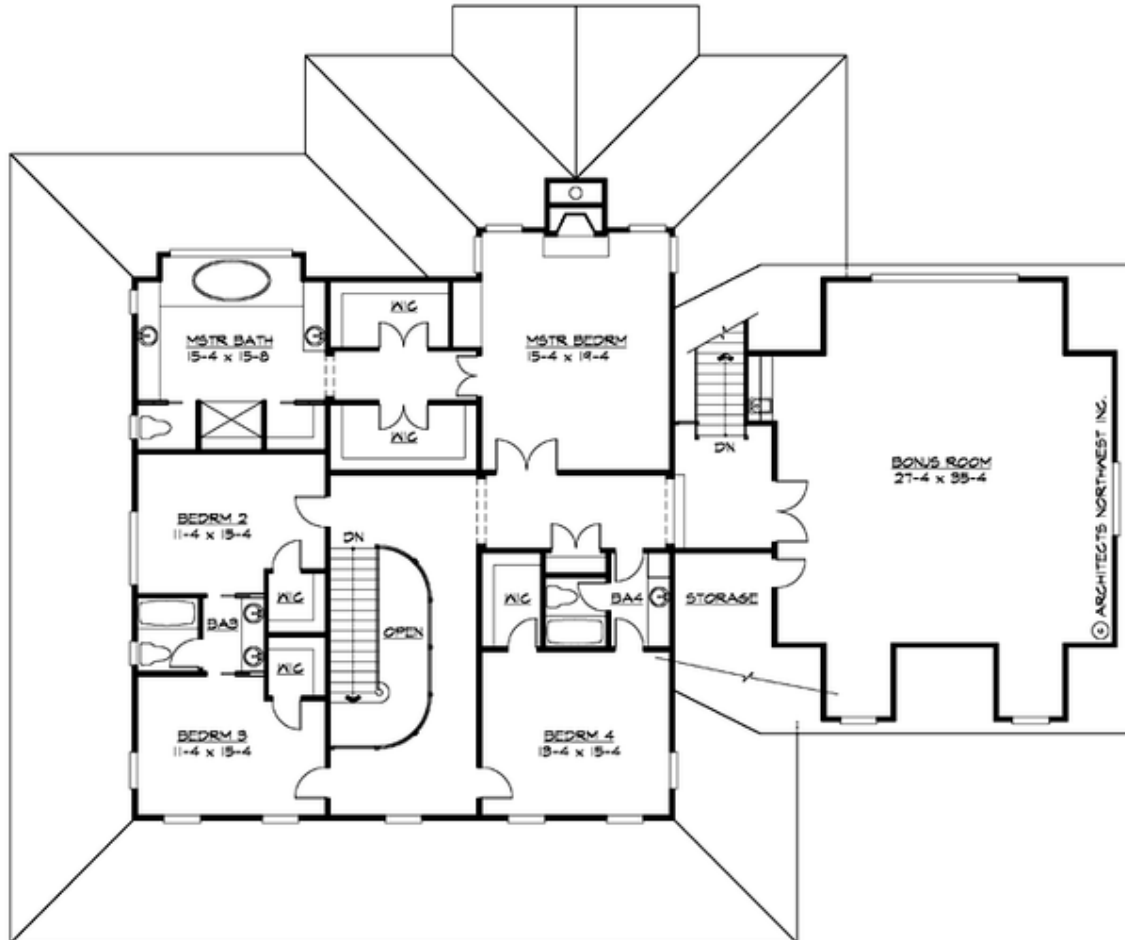
## PLEASANT GROVE - PLAN M5315A3S-0

### MAIN FLOOR



**PLEASANT GROVE - PLAN M5315A3S-0**

**UPPER FLOOR**





## PLEASANT GROVE - PLAN M5315A3S-0

### PLAN DETAILS

#### Area Summary

Total Area: 5315 sq. ft.  
Main Floor: 2412 sq. ft.  
Upper Floor: 2903 sq. ft.  
Garage Floor: 925 sq. ft.

#### General Information

Stories: 2  
Width: 88'-0"  
Depth: 72'-0"  
Height: 34'-0"

#### Architectural Style

Country  
Farmhouse  
Traditional

#### Number of Rooms

Bedrooms: 5  
Full Baths: 4

#### Garage

Garage Size: 3  
Garage Door Location: Side

#### Roof Pitches

Primary: 8:12  
Secondary: 12:12

#### Wall Heights

Main: 9'-0"  
Upper: 9'-0"  
3rd Floor: 0'-0"  
Lower: 0'-0"

#### Foundation Type

Crawl Space

#### Roof Framing

Combination

#### Floor Load

Live (lbs): 40 PSF  
Dead (lbs): 10 PSF

#### Roof Load

Live (lbs): 25 PSF  
Dead (lbs): 15 PSF  
Wind: 85 MPH

#### Design Features

- Bonus Space @ Upper Floor
- Den/Office
- Great Room
- Laundry Room @ Main Floor
- Master Bedroom @ Upper Floor Rear
- View Lot - Rear
- Wrap-Around Porch