



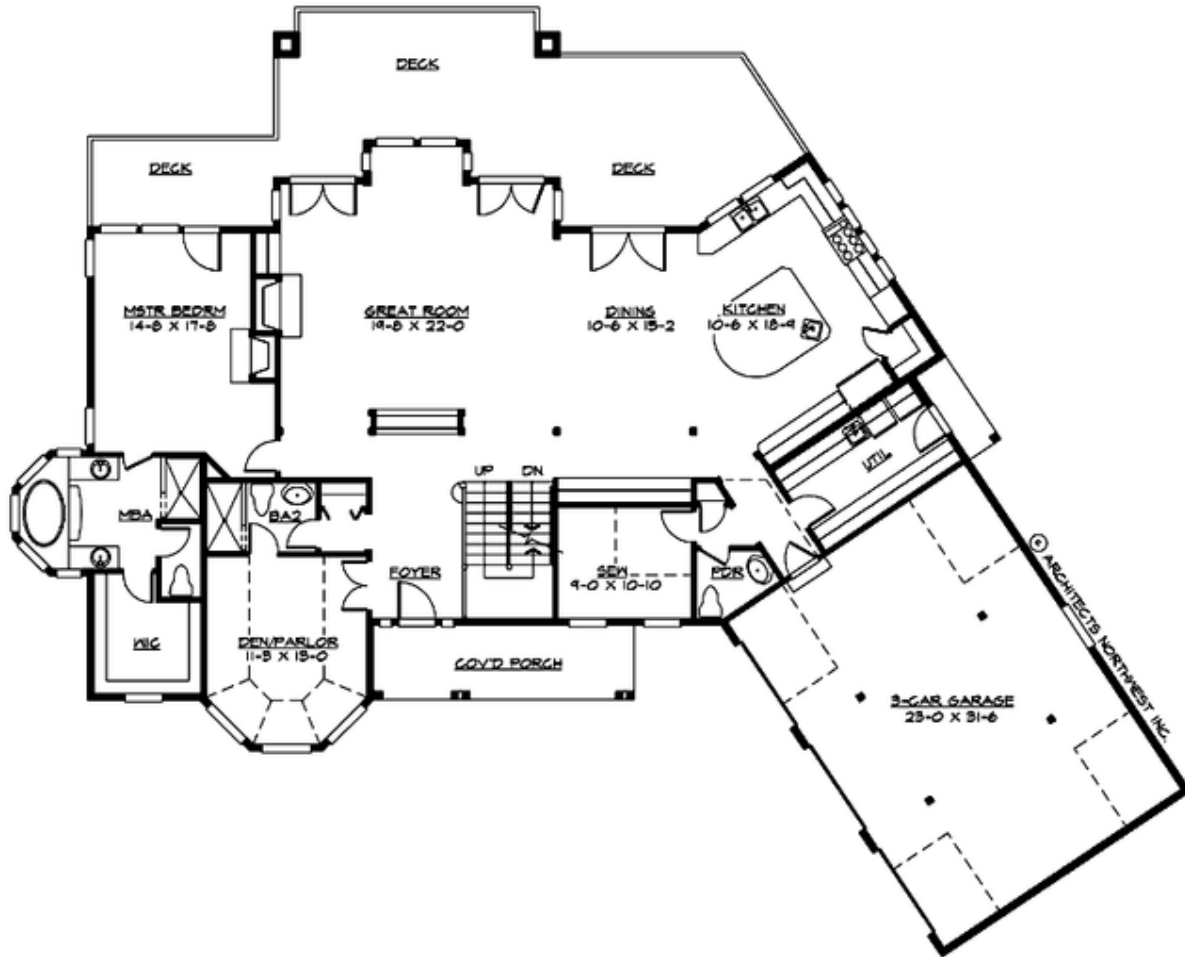
## ANDOVER PARK - PLAN M4952A3FA-0DB

Total Area: 4952 sq. ft.  
Garage Area: 768 sq. ft.  
Garage Area: 768 sq. ft.  
Garage Size: 3  
Stories: 3  
Bedrooms: 4  
Full Baths: 4  
Half Baths: 1  
Width: 95'-0"  
Depth: 75'-0"  
Height: 26'-0"  
Foundation: Daylight Basement



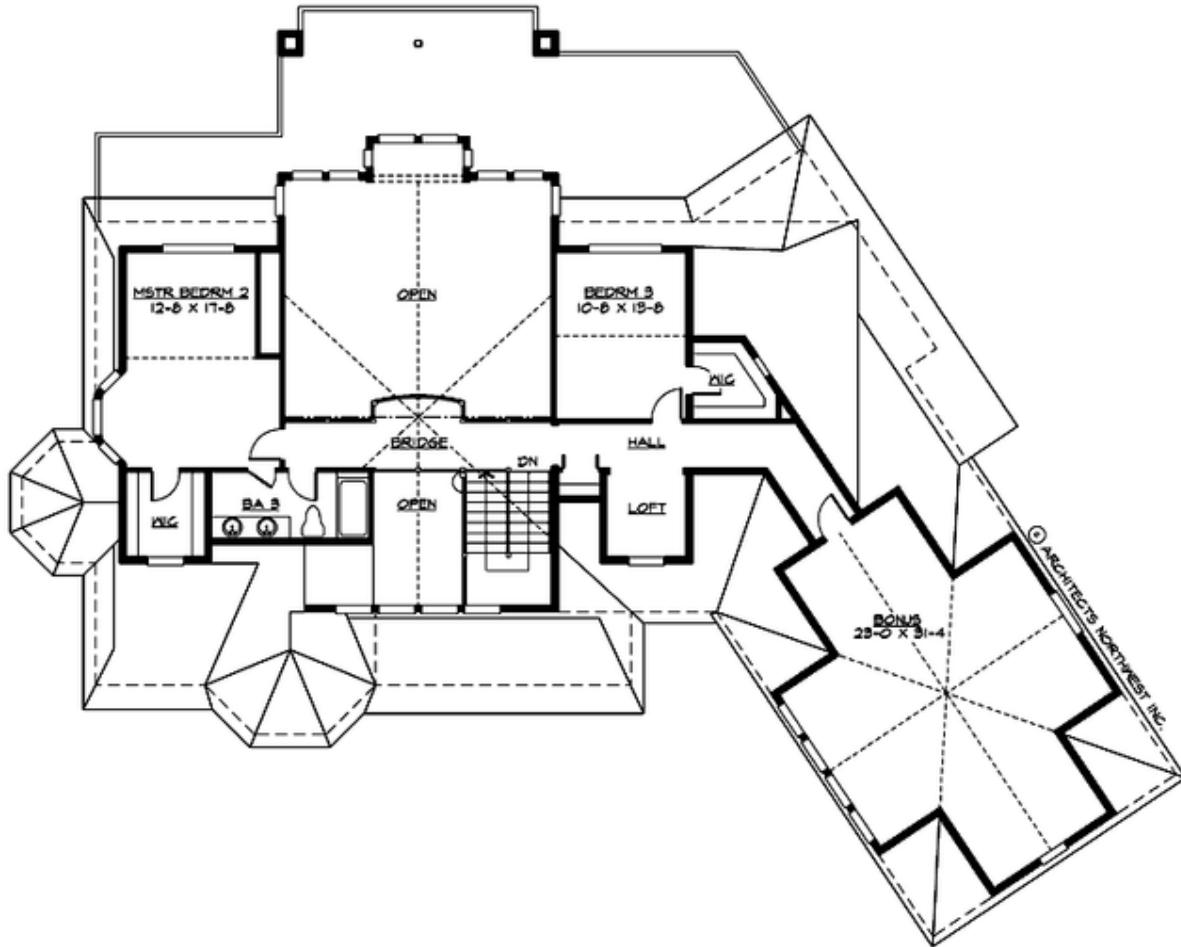
## ANDOVER PARK - PLAN M4952A3FA-0DB

### MAIN FLOOR



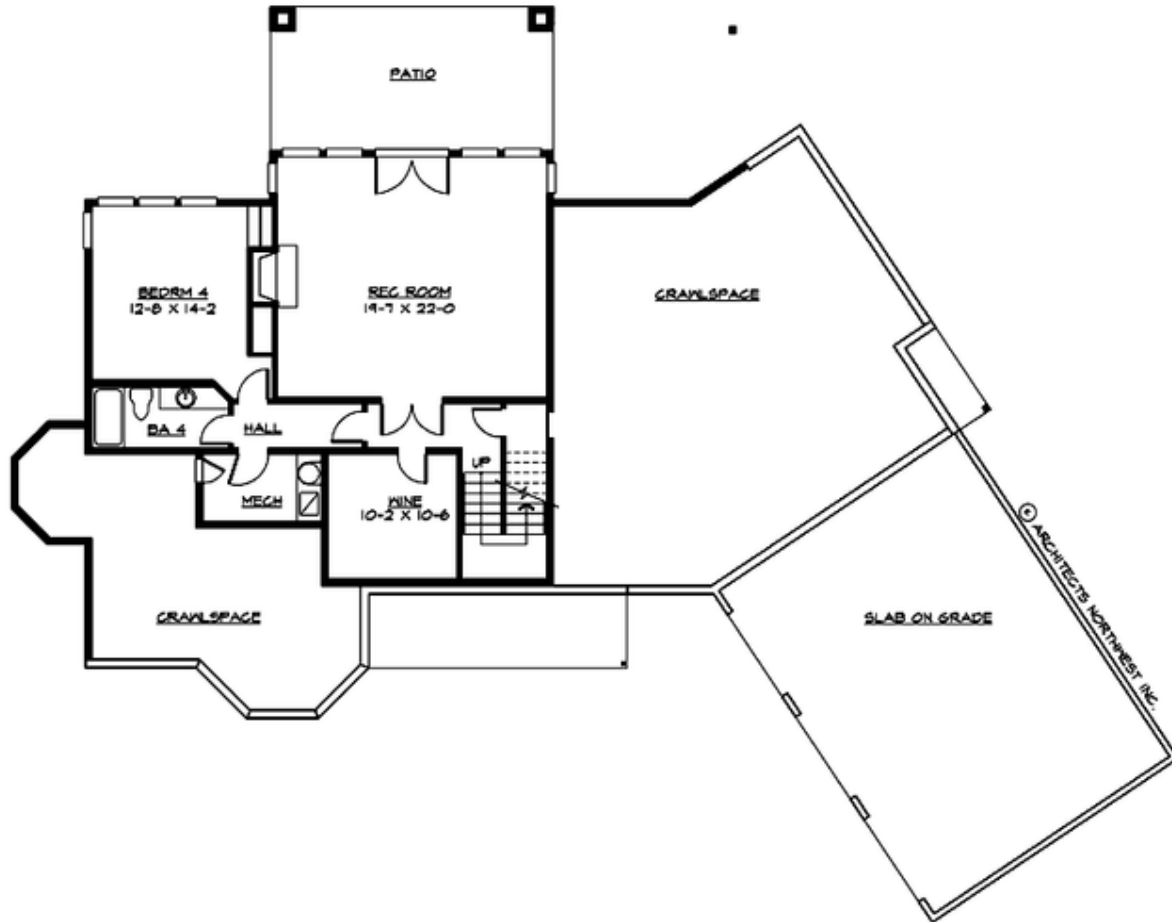
## ANDOVER PARK - PLAN M4952A3FA-0DB

### UPPER FLOOR



## ANDOVER PARK - PLAN M4952A3FA-0DB

### LOWER FLOOR





## ANDOVER PARK - PLAN M4952A3FA-0DB

### PLAN DETAILS

#### Area Summary

Total Area:	4952 sq. ft.
Main Floor:	2431 sq. ft.
Upper Floor:	1455 sq. ft.
Lower Floor:	1066 sq. ft.
Garage Floor:	768 sq. ft.

#### General Information

Stories:	3
Width:	95'-0"
Depth:	75'-0"
Height:	26'-0"

#### Architectural Style

Hampton  
Shingle  
Traditional

#### Number of Rooms

Bedrooms:	4
Full Baths:	4
Half Baths:	1

#### Garage

Garage Size:	3
Garage Door Location:	Front
Garage Type:	Angled

#### Roof Pitches

Primary:	10:12
Secondary:	12:12

#### Wall Heights

Main:	10'-0"
Upper:	8'-0"
3rd Floor:	0'-0"
Lower:	9'-0"

#### Foundation Type

Daylight Basement

#### Roof Framing

Stick

#### Floor Load

Live (lbs):	40 PSF
Dead (lbs):	10 PSF

#### Roof Load

Live (lbs):	25 PSF
Dead (lbs):	15 PSF
Wind:	85 MPH

#### Design Features

- Best Selling Plan
- Bonus Space @ Upper Floor & Lower Floor
- Den/Office
- Front Porch
- Great Room
- Laundry Room @ Main Floor
- Master Bedroom @ Main Floor Rear
- View Lot - Rear