

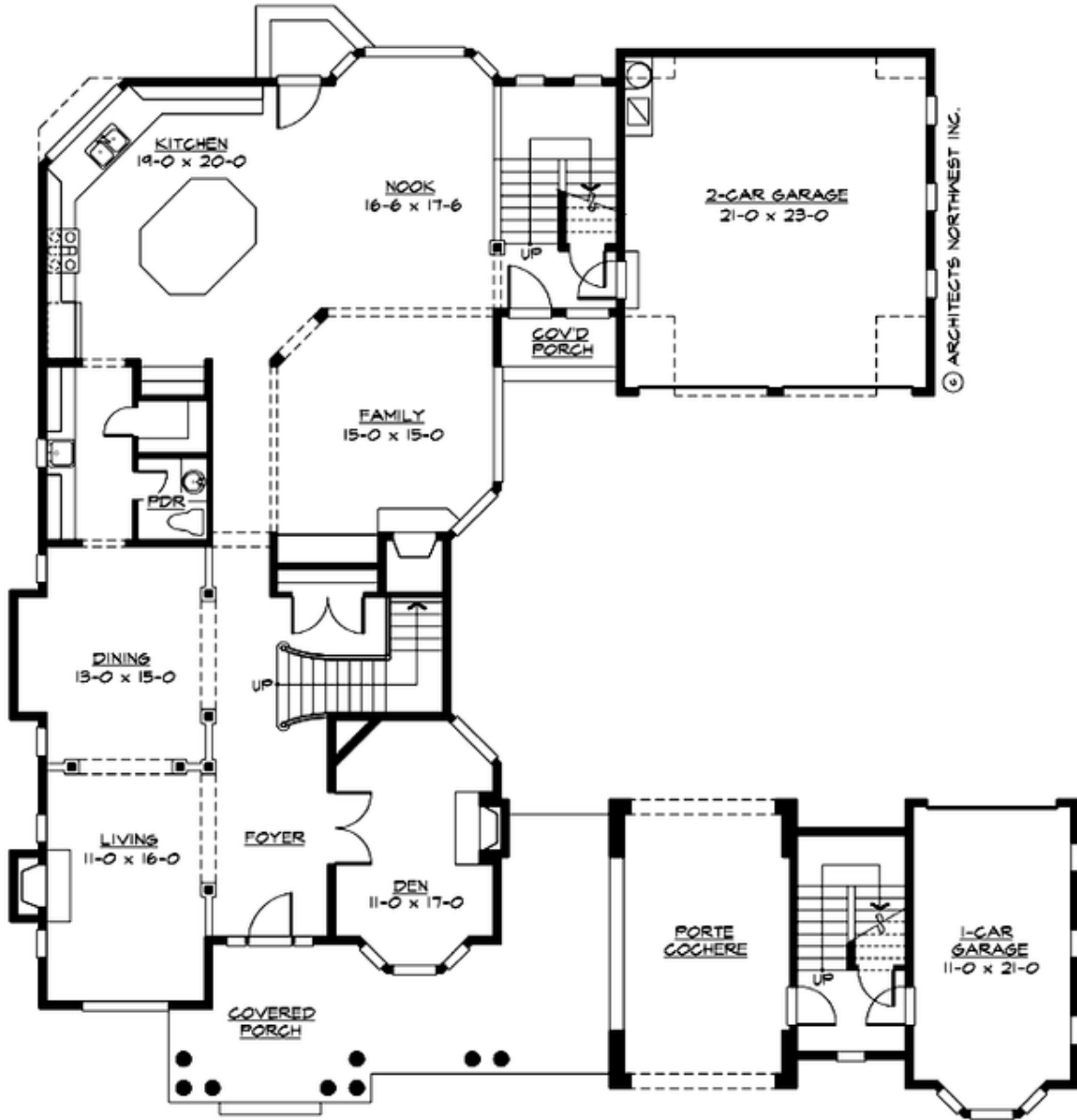
## MILLERS CROSSING - PLAN M4600A2F1RD-0

Total Area: 4600 sq. ft.  
Garage Area: 780 sq. ft.  
Garage Area: 780 sq. ft.  
Garage Size: 3  
Stories: 2  
Bedrooms: 4  
Full Baths: 2  
Half Baths: 1  
Width: 74'-0"  
Depth: 74'-0"  
Height: 30'-6"  
Foundation: Crawl Space



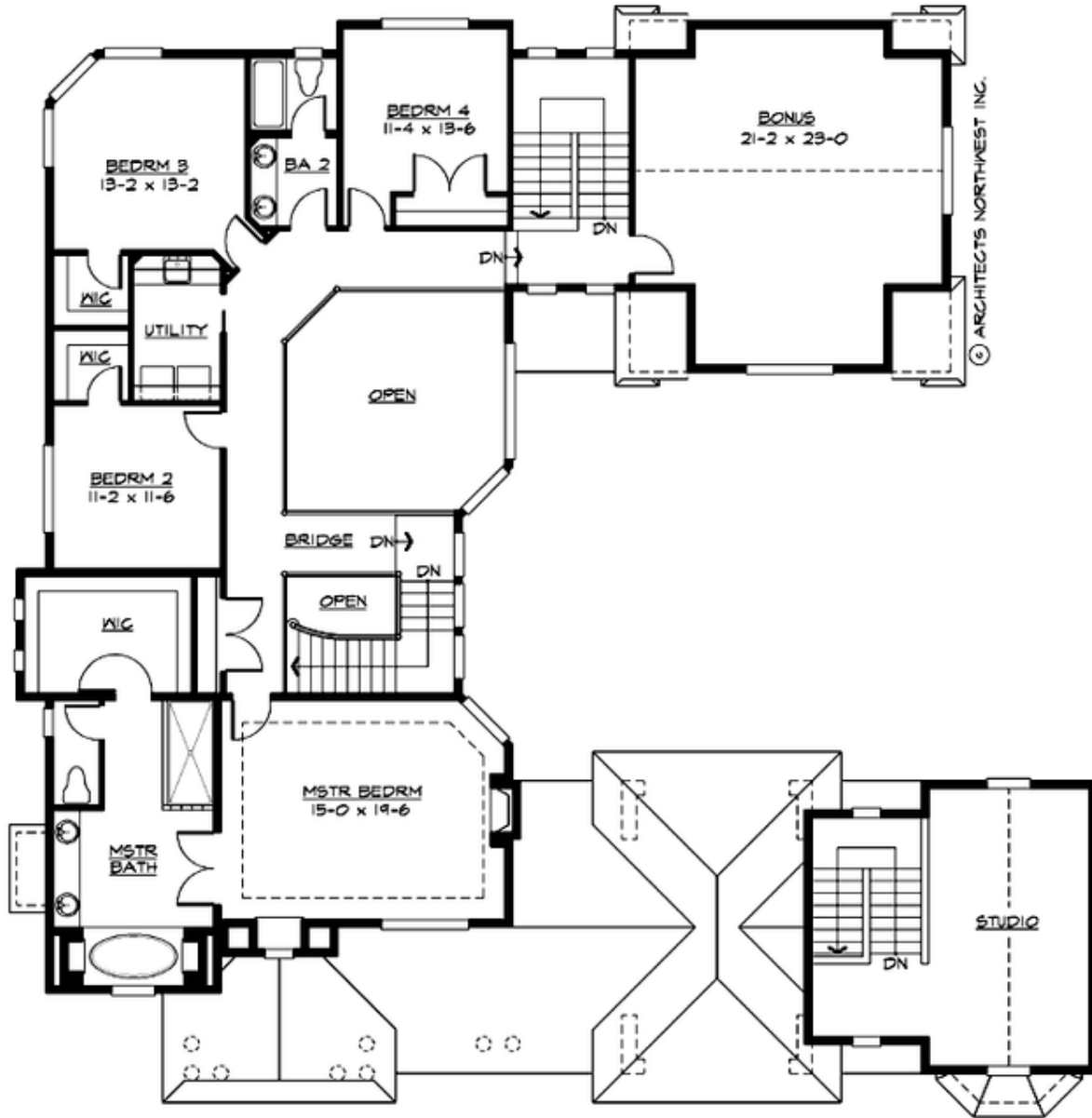
## MILLERS CROSSING - PLAN M4600A2F1RD-0

### MAIN FLOOR



## MILLERS CROSSING - PLAN M4600A2F1RD-0

### UPPER FLOOR





## MILLERS CROSSING - PLAN M4600A2F1RD-0

### PLAN DETAILS

#### Area Summary

Total Area:	4600 sq. ft.
Main Floor:	2055 sq. ft.
Upper Floor:	2545 sq. ft.
Garage Floor:	780 sq. ft.

#### General Information

Stories:	2
Width:	74'-0"
Depth:	74'-0"
Height:	30'-6"

#### Architectural Style

Country  
Farmhouse  
Traditional

#### Number of Rooms

Bedrooms:	4
Full Baths:	2
Half Baths:	1

#### Garage

Garage Size:	3
Garage Door Location:	Front
Garage Type:	Detached

#### Roof Pitches

Primary:	8:12
Secondary:	12:12

#### Wall Heights

Main:	9'-0"
Upper:	9'-0"
3rd Floor:	0'-0"
Lower:	0'-0"

#### Foundation Type

Crawl Space

#### Roof Framing

Trusses

#### Floor Load

Live (lbs):	40 PSF
Dead (lbs):	10 PSF

#### Roof Load

Live (lbs):	25 PSF
Dead (lbs):	15 PSF
Wind:	85 MPH

#### Design Features

- Bonus Space @ Upper Floor
- Den/Office
- Front Porch
- Laundry Room @ Upper Floor
- Living & Family Room
- Master Bedroom @ Upper Floor Front
- View Lot - Rear
- Wide Lot