



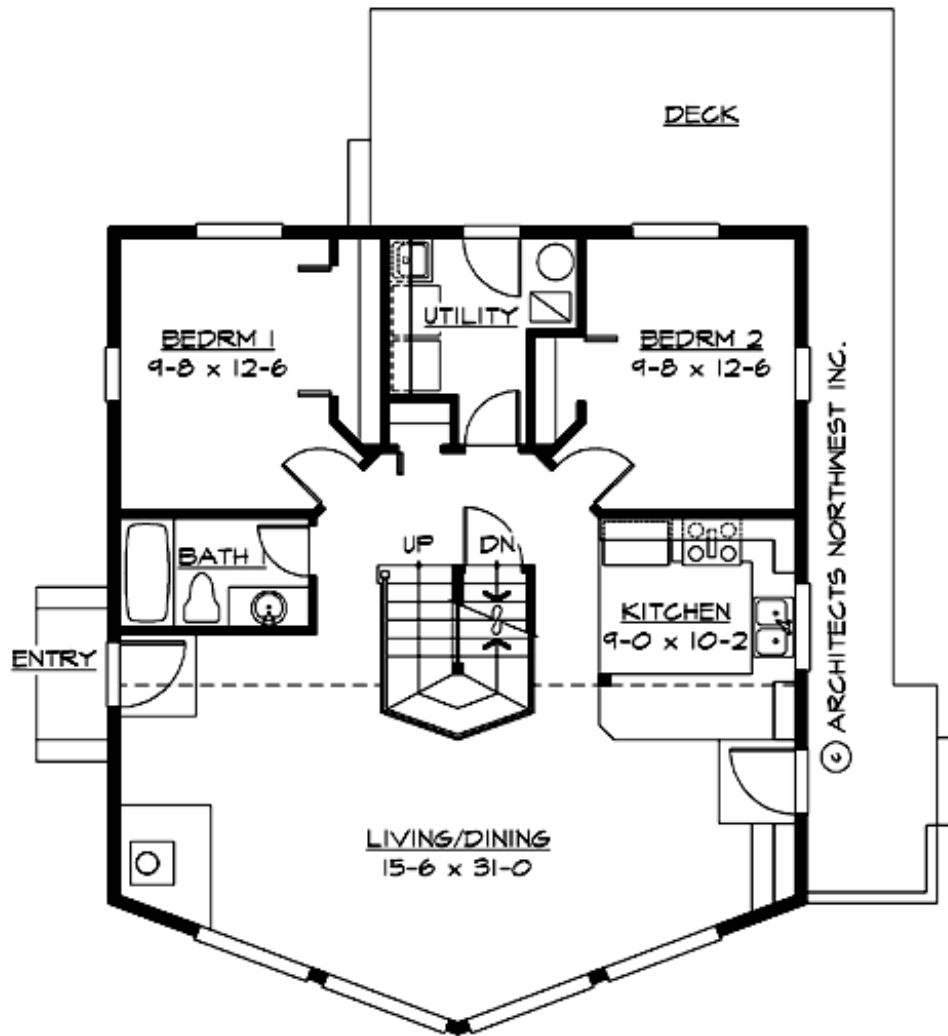
## GLACIER RIDGE - PLAN M1450A0-0DB

Total Area: 2538 sq. ft.  
Garage Area: 0 sq. ft.  
Garage Area: 0 sq. ft.  
Garage Size: No Garage  
Stories: 3  
Bedrooms: 3  
Full Baths: 2  
Width: 32'-0"  
Depth: 37'-0"  
Height: 23'-6"  
Foundation: Cellar Basement



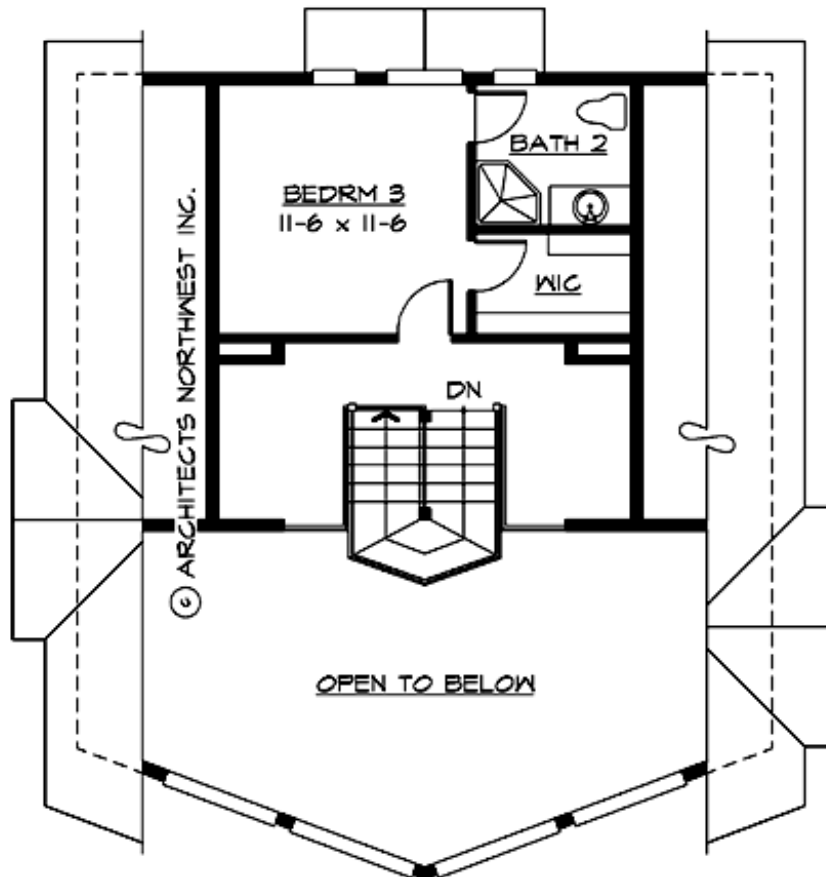
## GLACIER RIDGE - PLAN M1450A0-0DB

### MAIN FLOOR



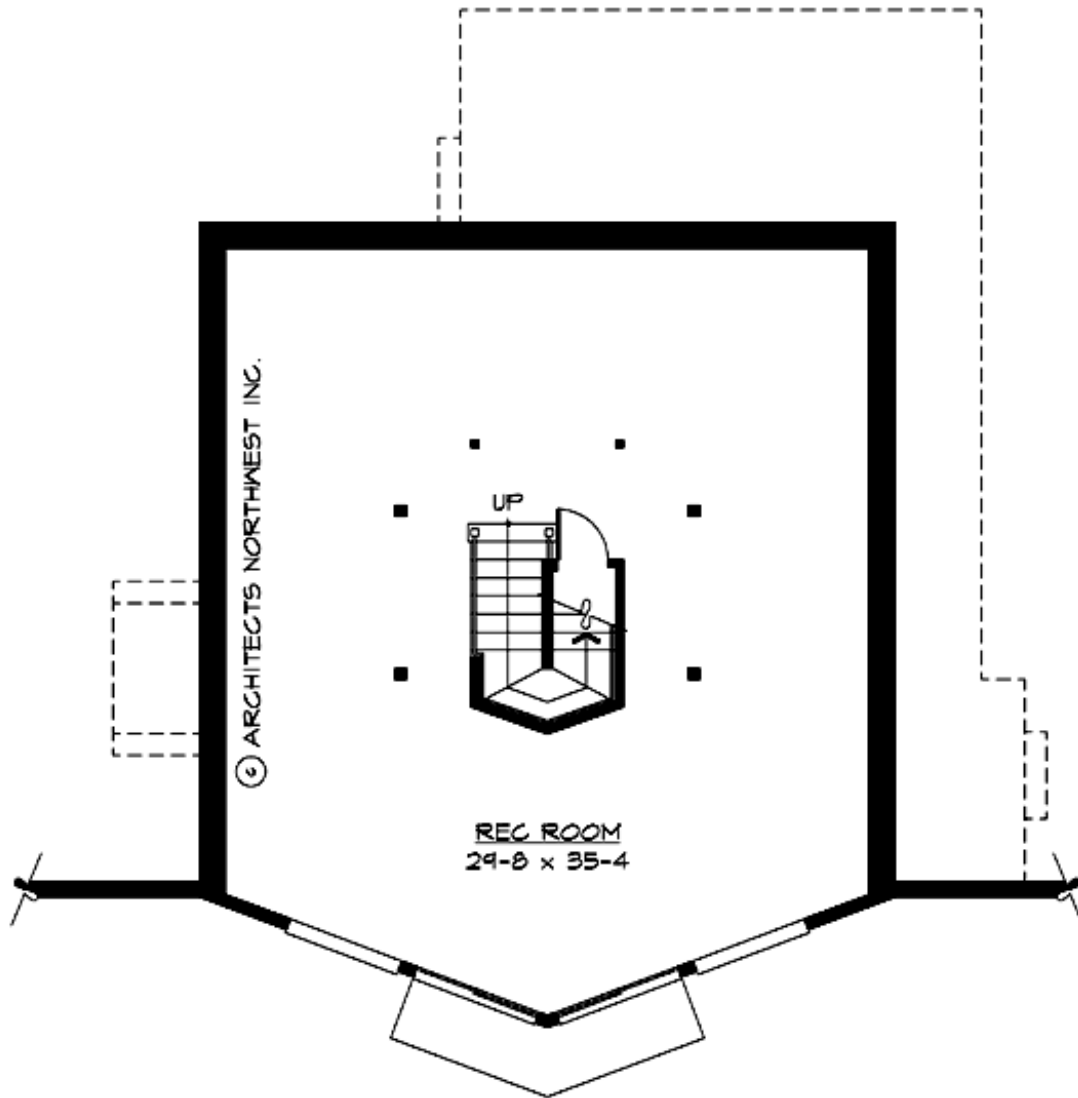
## GLACIER RIDGE - PLAN M1450A0-0DB

### UPPER FLOOR



## GLACIER RIDGE - PLAN M1450A0-0DB

### LOWER FLOOR





## GLACIER RIDGE - PLAN M1450A0-0DB

### PLAN DETAILS

#### Area Summary

Total Area: 2538 sq. ft.  
Main Floor: 1088 sq. ft.  
Upper Floor: 362 sq. ft.  
Lower Floor: 1088 sq. ft.

#### General Information

Stories: 3  
Width: 32'-0"  
Depth: 37'-0"  
Height: 23'-6"

#### Architectural Style

Alpine  
Cottage  
Mountain

#### Number of Rooms

Bedrooms: 3  
Full Baths: 2

#### Garage

No Garage

#### Roof Pitches

Primary: 9:12

#### Wall Heights

Main: 8'-0"  
Upper: 8'-0"  
3rd Floor: 0'-0"  
Lower: 9'-0"

#### Foundation Type

Cellar Basement

#### Roof Framing

Stick

#### Floor Load

Live (lbs): 40 PSF  
Dead (lbs): 10 PSF

#### Roof Load

Live (lbs): 25 PSF  
Dead (lbs): 15 PSF  
Wind: 85 MPH

#### Design Features

- Bonus Space @ Lower Floor
- Great Room
- Laundry Room @ Main Floor
- Master Bedroom @ Upper Floor Rear
- Vacation Plan