

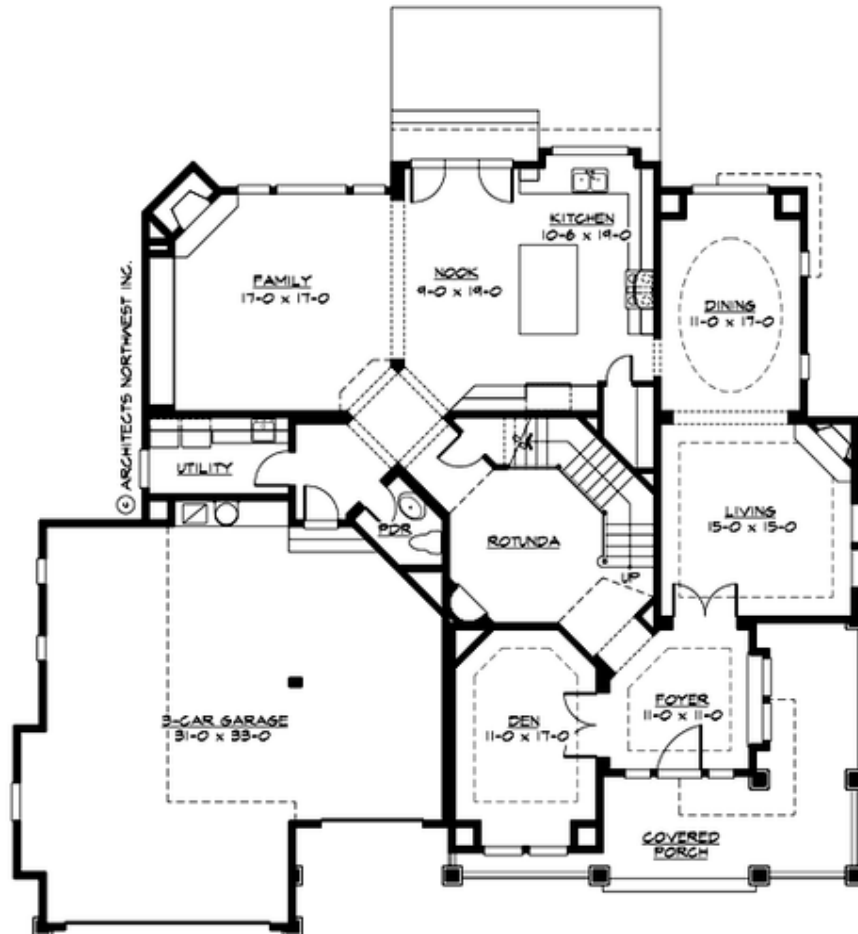
## TREEMONT PARK - PLAN M4060B3F-0

Total Area: 4030 sq. ft.  
Garage Area: 940 sq. ft.  
Garage Area: 940 sq. ft.  
Garage Size: 3  
Stories: 2  
Bedrooms: 4  
Full Baths: 3  
Half Baths: 1  
Width: 67'-0"  
Depth: 61'-0"  
Height: 31'-0"  
Foundation: Crawl Space



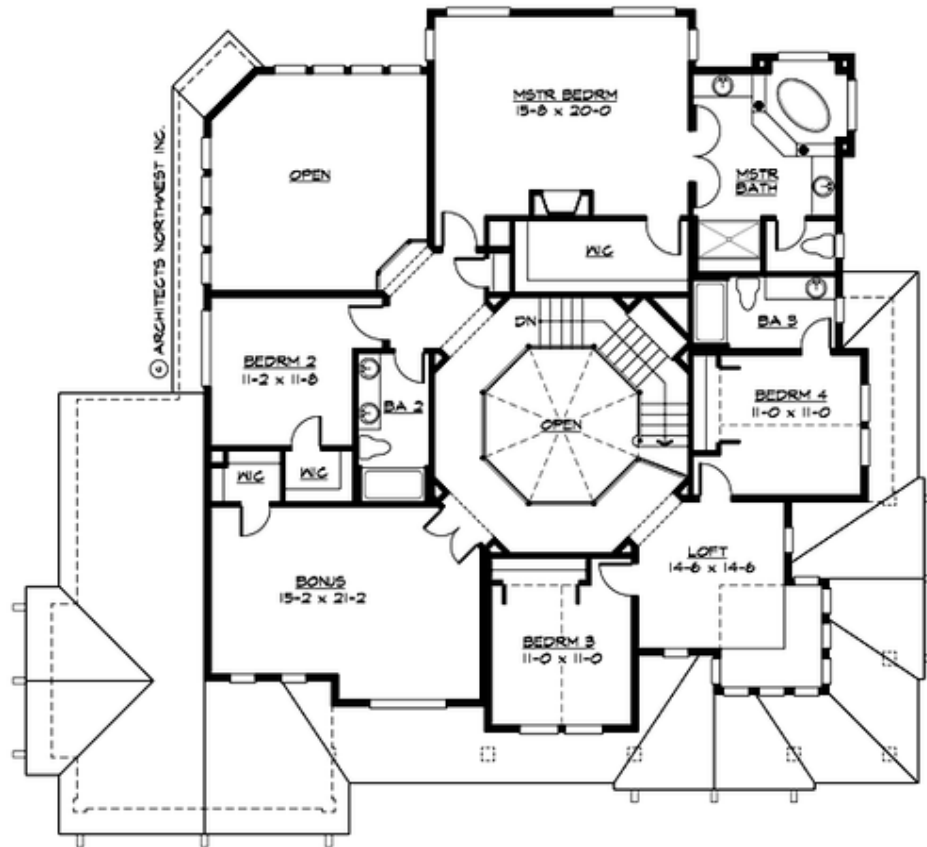
## TREEMONT PARK - PLAN M4060B3F-0

### MAIN FLOOR



## TREEMONT PARK - PLAN M4060B3F-0

### UPPER FLOOR





## TREEMONT PARK - PLAN M4060B3F-0

### PLAN DETAILS

#### Area Summary

Total Area: 4030 sq. ft.  
Main Floor: 2000 sq. ft.  
Upper Floor: 2030 sq. ft.  
Garage Floor: 940 sq. ft.

#### General Information

Stories: 2  
Width: 67'-0"  
Depth: 61'-0"  
Height: 31'-0"

#### Architectural Style

Craftsman  
Lodge  
Northwest

#### Number of Rooms

Bedrooms: 4  
Full Baths: 3  
Half Baths: 1

#### Garage

Garage Size: 3  
Garage Door Location: Front

#### Roof Pitches

Primary: 6:12  
Secondary: 4:12

#### Wall Heights

Main: 9'-0"  
Upper: 9'-0"  
3rd Floor: 0'-0"  
Lower: 0'-0"

#### Foundation Type

Crawl Space

#### Roof Framing

Trusses

#### Floor Load

Live (lbs): 40 PSF  
Dead (lbs): 10 PSF

#### Roof Load

Live (lbs): 25 PSF  
Dead (lbs): 15 PSF  
Wind: 85 MPH

#### Design Features

- Bonus Space @ Upper Floor
- Den/Office
- Front Porch
- Laundry Room @ Main Floor
- Living & Family Room
- Master Bedroom @ Upper Floor Rear
- View Lot - Rear
- Wide Lot