



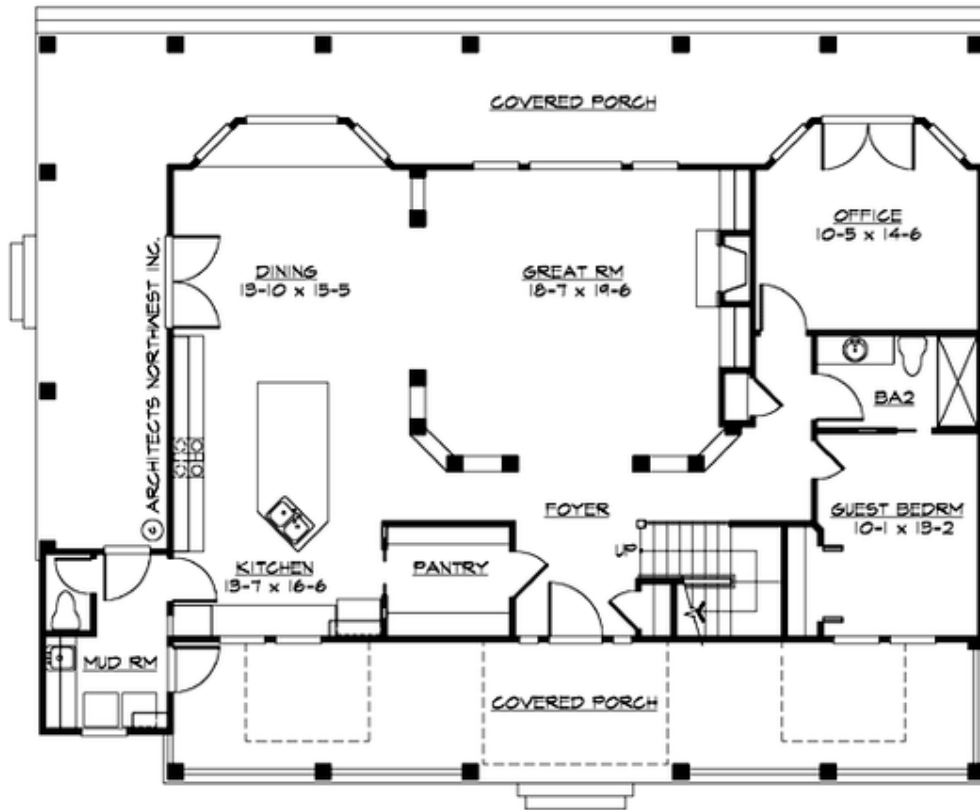
## AMESBURY - PLAN M3594A3FD-0

Total Area: 3594 sq. ft.  
Garage Area: 816 sq. ft.  
Garage Area: 816 sq. ft.  
Garage Size: 3  
Stories: 2  
Bedrooms: 4  
Full Baths: 3  
Width: 61'-0"  
Depth: 48'-0"  
Height: 29'-0"  
Foundation: Crawl Space



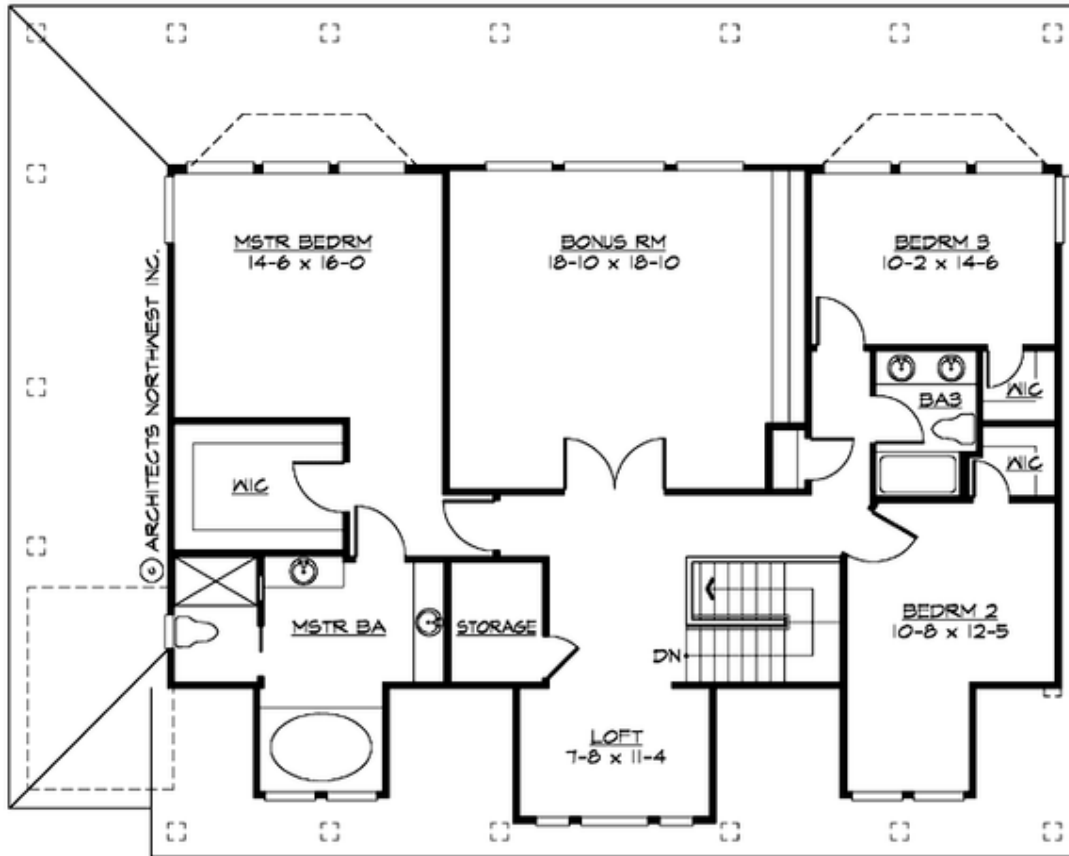
## AMESBURY - PLAN M3594A3FD-0

### MAIN FLOOR



**AMESBURY - PLAN M3594A3FD-0**

**UPPER FLOOR**





## AMESBURY - PLAN M3594A3FD-0

### PLAN DETAILS

#### Area Summary

Total Area: 3594 sq. ft.  
Main Floor: 1820 sq. ft.  
Upper Floor: 1774 sq. ft.  
Garage Floor: 816 sq. ft.

#### General Information

Stories: 2  
Width: 61'-0"  
Depth: 48'-0"  
Height: 29'-0"

#### Architectural Style

Cottage  
Country  
Farmhouse

#### Number of Rooms

Bedrooms: 4  
Full Baths: 3

#### Garage

Garage Size: 3  
Garage Door Location: Front  
Garage Type: Detached

#### Roof Pitches

Primary: 12:12  
Secondary: 4:12

#### Wall Heights

Main: 10'-0"  
Upper: 9'-0"  
3rd Floor: 0'-0"  
Lower: 0'-0"

#### Foundation Type

Crawl Space

#### Roof Framing

Trusses

#### Floor Load

Live (lbs): 40 PSF  
Dead (lbs): 10 PSF

#### Roof Load

Live (lbs): 25 PSF  
Dead (lbs): 15 PSF  
Wind: 85 MPH

#### Design Features

- Bonus Space @ Upper Floor
- Den/Office
- Front Porch
- Great Room
- Laundry Room @ Main Floor
- Master Bedroom @ Upper Floor Rear
- Vacation Plan