



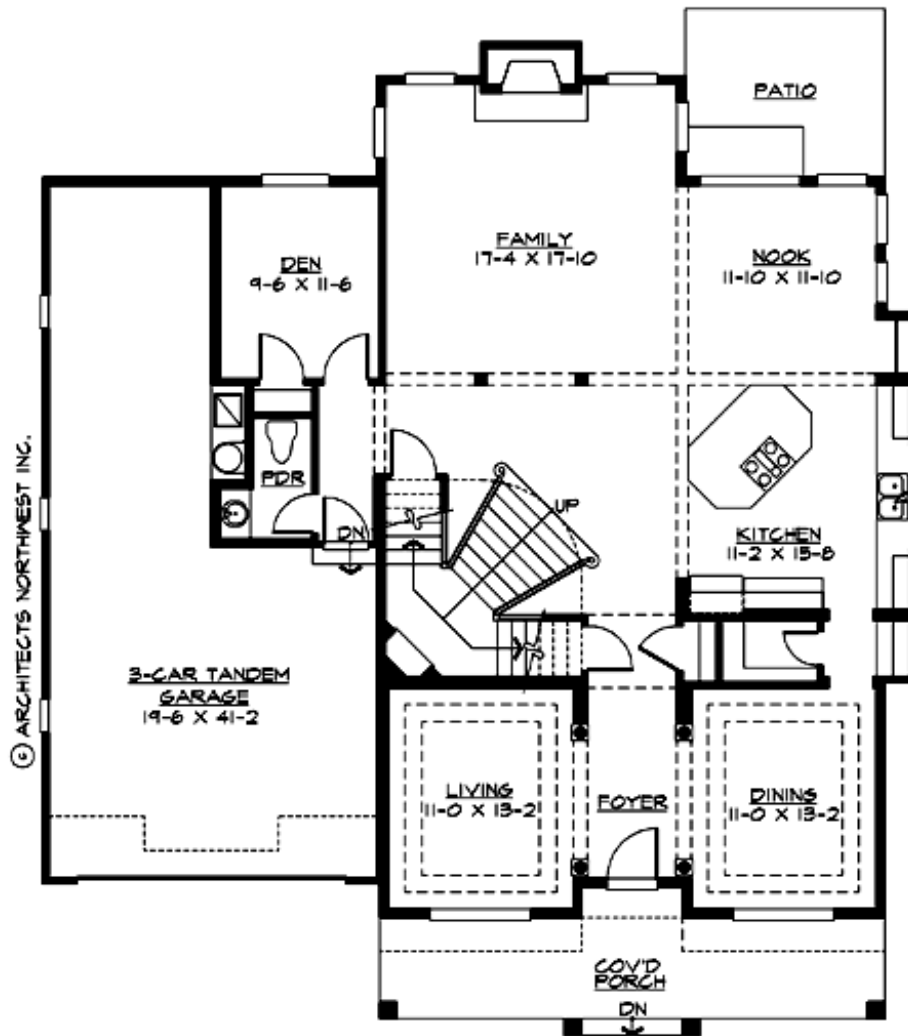
## TWIN PEAKS - PLAN M3445E3FT-0

Total Area: 3486 sq. ft.  
Garage Area: 632 sq. ft.  
Garage Area: 632 sq. ft.  
Garage Size: 3  
Stories: 2  
Bedrooms: 4  
Full Baths: 2  
Half Baths: 1  
Width: 52'-0"  
Depth: 57'-0"  
Height: 29'-6"  
Foundation: Crawl Space



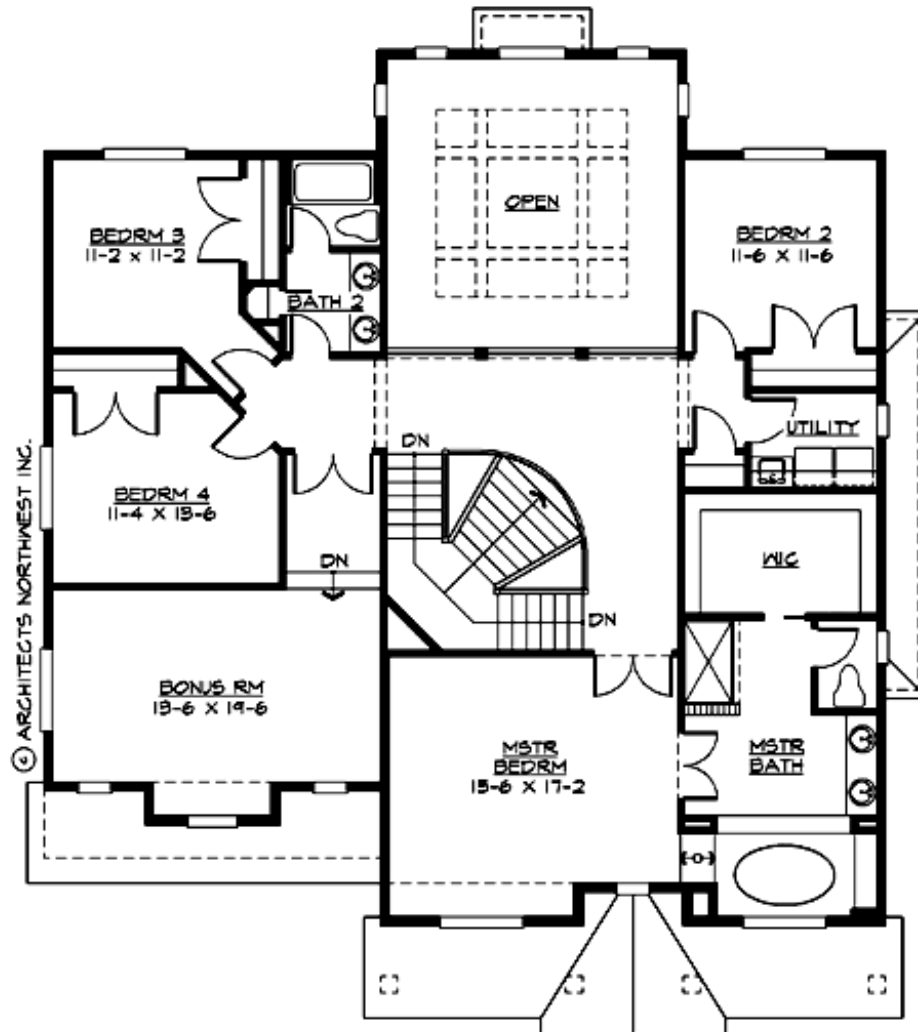
## TWIN PEAKS - PLAN M3445E3FT-0

### MAIN FLOOR



## TWIN PEAKS - PLAN M3445E3FT-0

### UPPER FLOOR





## TWIN PEAKS - PLAN M3445E3FT-0

### PLAN DETAILS

#### Area Summary

Total Area: 3486 sq. ft.  
Main Floor: 1672 sq. ft.  
Upper Floor: 1814 sq. ft.  
Garage Floor: 632 sq. ft.

#### General Information

Stories: 2  
Width: 52'-0"  
Depth: 57'-0"  
Height: 29'-6"

#### Architectural Style

Craftsman  
Lodge  
Northwest

#### Number of Rooms

Bedrooms: 4  
Full Baths: 2  
Half Baths: 1

#### Garage

Garage Size: 3  
Garage Door Location: Front  
Garage Type: Tandem

#### Roof Pitches

Primary: 6:12  
Secondary: 8:12

#### Wall Heights

Main: 9'-0"  
Upper: 8'-0"  
3rd Floor: 0'-0"  
Lower: 0'-0"

#### Foundation Type

Crawl Space

#### Roof Framing

Trusses

#### Floor Load

Live (lbs): 40 PSF  
Dead (lbs): 10 PSF

#### Roof Load

Live (lbs): 25 PSF  
Dead (lbs): 15 PSF  
Wind: 85 MPH

#### Design Features

- Bonus Space @ Upper Floor
- Den/Office
- Front Porch
- Laundry Room @ Upper Floor
- Living & Family Room
- Master Bedroom @ Upper Floor Front
- Narrow Lot
- View Lot - Front