



BELLEVUE - PLAN M3330A3F-0

Total Area: 3330 sq. ft.
Garage Area: 625 sq. ft.
Garage Area: 625 sq. ft.
Garage Size: 3
Stories: 2
Bedrooms: 4
Full Baths: 3
Half Baths: 1
Width: 54'-0"
Depth: 54'-0"
Height: 35'-0"
Foundation: Crawl Space

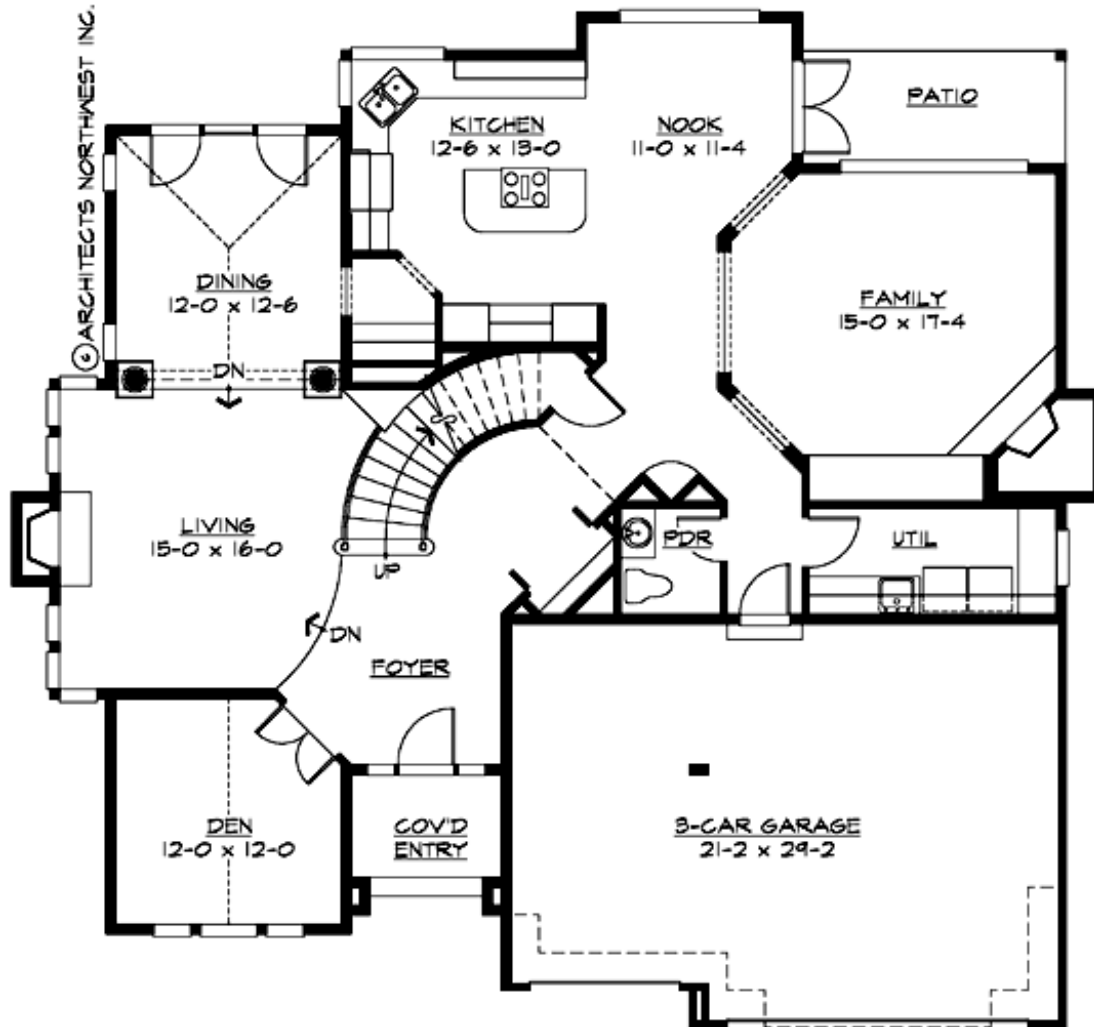


A Classic Facade Opens to a Dramatic Interior.

Offering exceptional luxury on a compact footprint, the Bellevue's monumental entry arch creates impressive curb appeal, while the interiors enclose outstandingly crafted spaces. The grand foyer, with its elegant curving staircase, join with the high-windowed double-height living room for a spectacular formal entertaining space. The private, vaulted den is conveniently accessed from the foyer, while the gracious kitchen with butlery, nook and family room are positioned towards the rear, encouraging intimate family gatherings. The upper level contains a spacious master suite with sitting area and oversize walk-in closet, a guest bedroom with ensuite bath, and two children's bedrooms served by a compartmented hall bath.

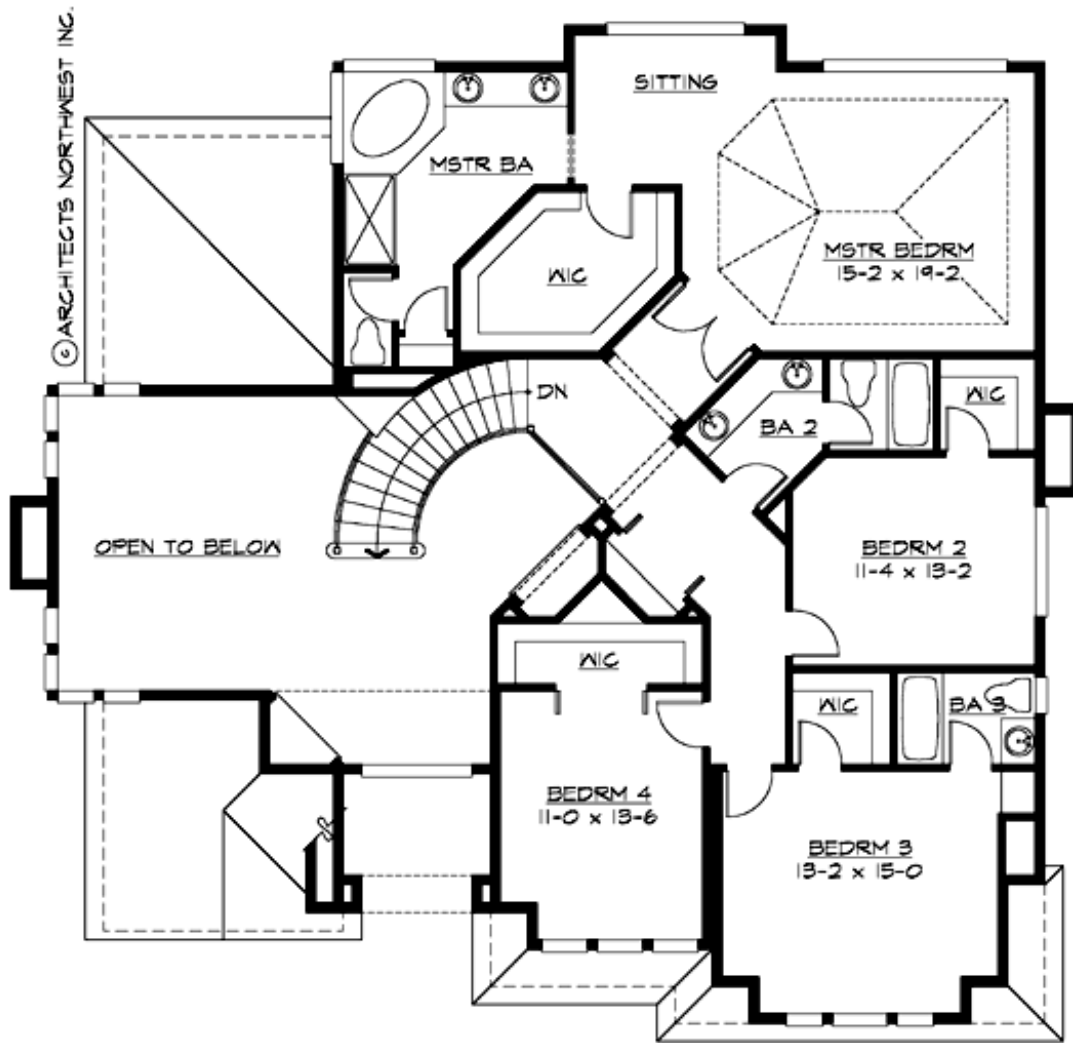
BELLEVUE - PLAN M3330A3F-0

MAIN FLOOR



BELLEVIEW - PLAN M3330A3F-0

UPPER FLOOR





BELLEVIEW - PLAN M3330A3F-0

PLAN DETAILS

Area Summary

Total Area:	3330 sq. ft.
Main Floor:	1744 sq. ft.
Upper Floor:	1596 sq. ft.
Garage Floor:	625 sq. ft.

General Information

Stories:	2
Width:	54'-0"
Depth:	54'-0"
Height:	35'-0"

Architectural Style

Chateau
European
Traditional

Number of Rooms

Bedrooms:	4
Full Baths:	3
Half Baths:	1

Garage

Garage Size:	3
Garage Door Location:	Front

Roof Pitches

Primary:	10:12
----------	-------

Wall Heights

Main:	9'-0"
Upper:	8'-0"
3rd Floor:	0'-0"
Lower:	0'-0"

Foundation Type

Crawl Space

Roof Framing

Trusses

Floor Load

Live (lbs):	40 PSF
Dead (lbs):	10 PSF

Roof Load

Live (lbs):	25 PSF
Dead (lbs):	15 PSF
Wind:	85 MPH

Design Features

- Best Selling Plan
- Den/Office
- Laundry Room @ Main Floor
- Living & Family Room
- Master Bedroom @ Upper Floor Rear
- View Lot - Rear
- Wide Lot