

## TAMARACK FALLS - PLAN M2875A2F-10DB

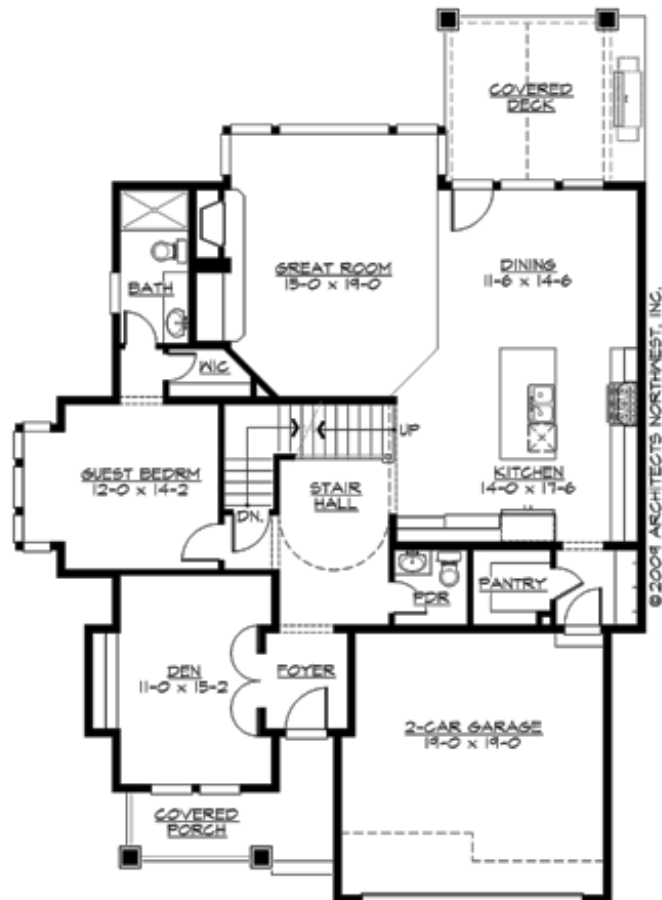
Total Area: 4410 sq. ft.  
Garage Area: 400 sq. ft.  
Garage Area: 400 sq. ft.  
Garage Size: 2  
Stories: 3  
Bedrooms: 5  
Full Baths: 4  
Half Baths: 1  
Width: 45'-6"  
Depth: 64'-6"  
Height: 27'-6"  
Foundation: Daylight Basement





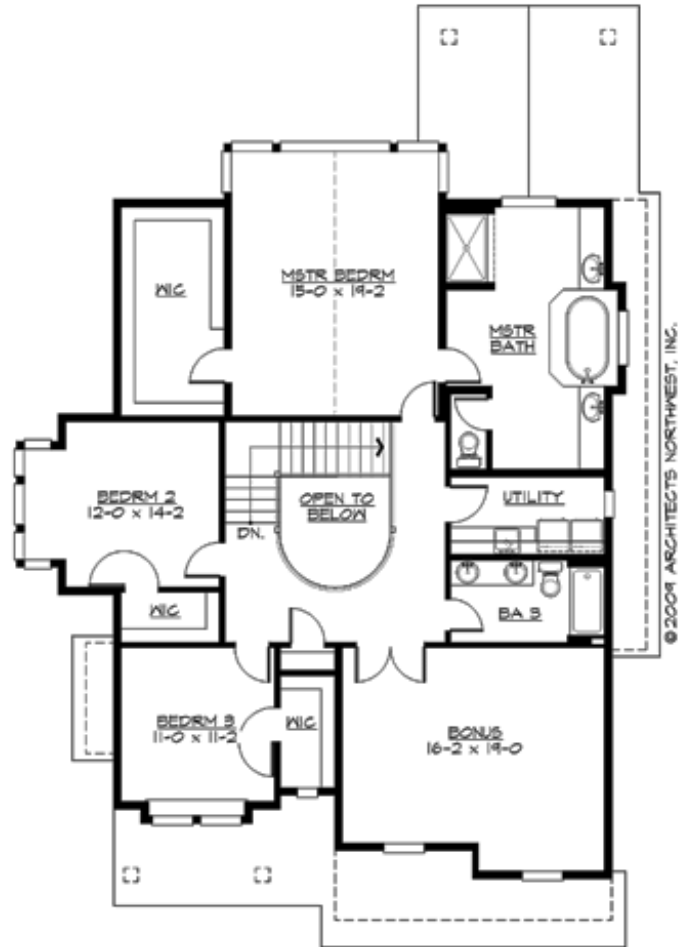
## TAMARACK FALLS - PLAN M2875A2F-10DB

### MAIN FLOOR



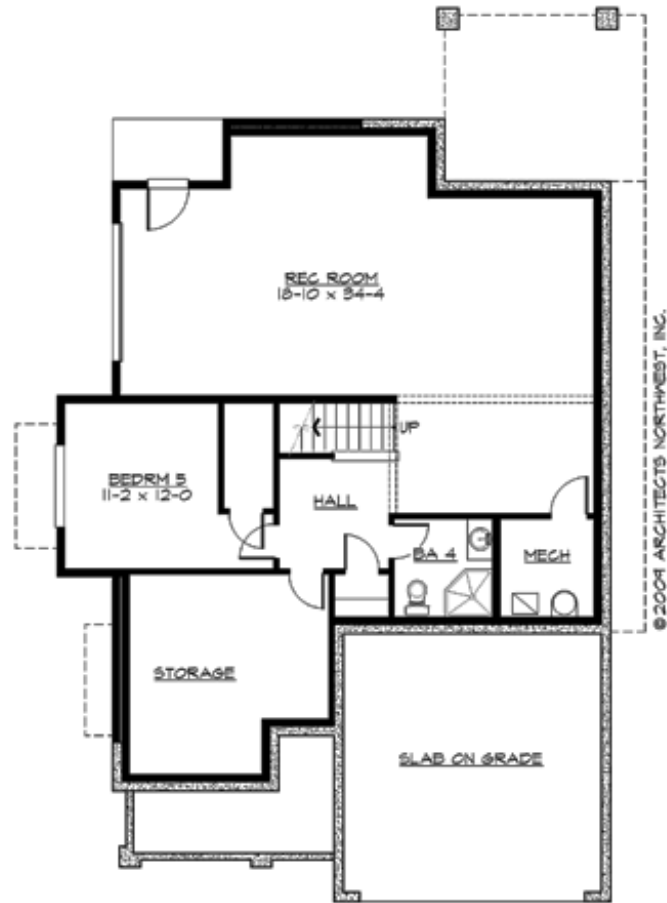
## TAMARACK FALLS - PLAN M2875A2F-10DB

### UPPER FLOOR



## TAMARACK FALLS - PLAN M2875A2F-10DB

### LOWER FLOOR





## TAMARACK FALLS - PLAN M2875A2F-10DB

### PLAN DETAILS

#### Area Summary

Total Area: 4410 sq. ft.  
Main Floor: 1555 sq. ft.  
Upper Floor: 1700 sq. ft.  
Lower Floor: 1155 sq. ft.  
Garage Floor: 400 sq. ft.

#### General Information

Stories: 3  
Width: 45'-6"  
Depth: 64'-6"  
Height: 27'-6"

#### Architectural Style

Craftsman  
Northwest  
Shingle

#### Number of Rooms

Bedrooms: 5  
Full Baths: 4  
Half Baths: 1

#### Garage

Garage Size: 2  
Garage Door Location: Front

#### Roof Pitches

Primary: 6:12

#### Wall Heights

Main: 9'-0"  
Upper: 8'-0"  
3rd Floor: 0'-0"  
Lower: 9'-0"

#### Foundation Type

Daylight Basement

#### Roof Framing

Trusses

#### Floor Load

Live (lbs): 40 PSF  
Dead (lbs): 10 PSF

#### Roof Load

Live (lbs): 25 PSF  
Dead (lbs): 15 PSF  
Wind: 85 MPH

#### Design Features

- Bonus Space @ Upper Floor & Lower Floor
- Den/Office
- Front and Rear Porch
- Great Room
- Laundry Room @ Upper Floor
- Master Bedroom @ Upper Floor Rear
- Narrow Lot
- Small Plan