



## SILVERWOOD - PLAN R3075A3F-0

Total Area: 3075 sq. ft.  
Garage Area: 716 sq. ft.  
Garage Area: 716 sq. ft.  
Garage Size: 3  
Stories: 1  
Bedrooms: 3  
Full Baths: 3  
Width: 91'-0"  
Depth: 77'-0"  
Height: 23'-0"  
Foundation: Crawl Space

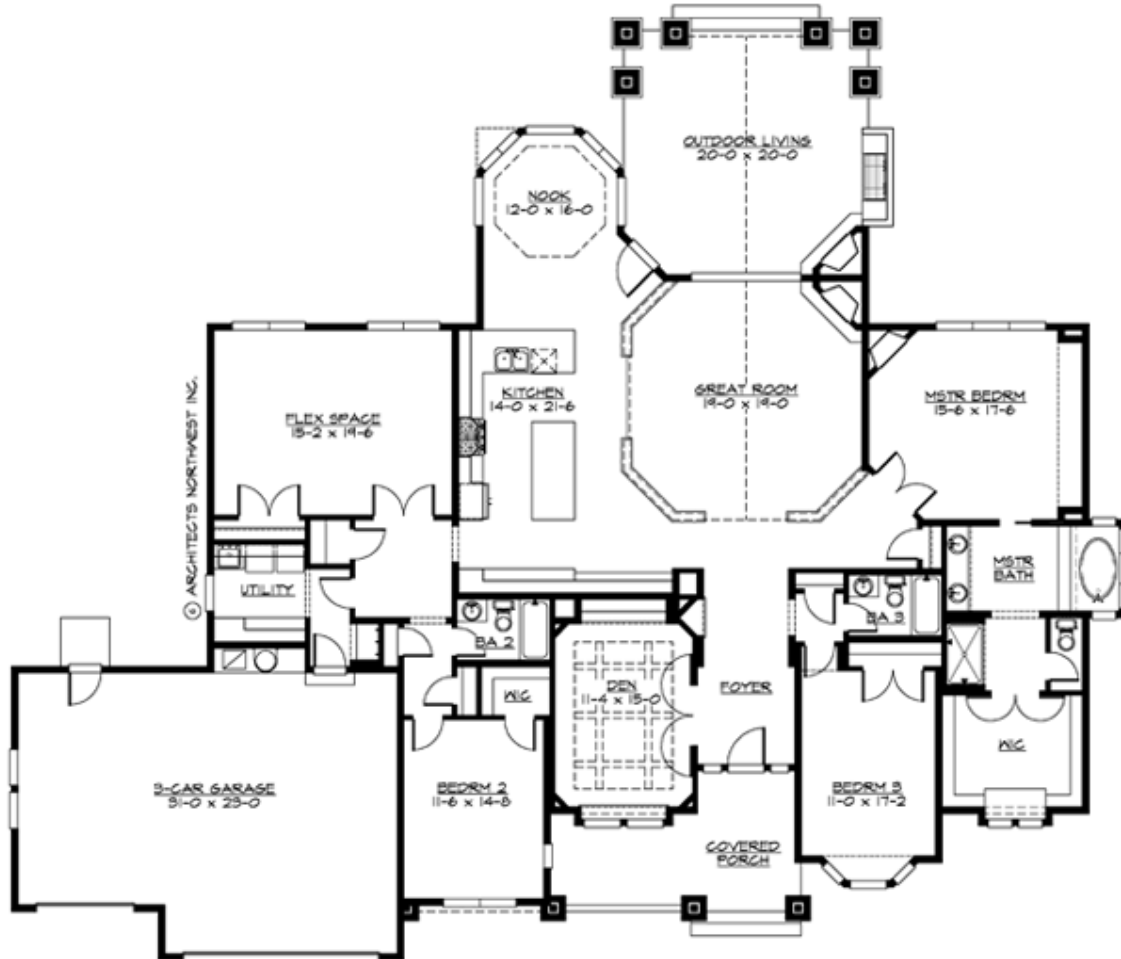


### ***Flowing Gables Shelter Indoor-Outdoor Connections.***

An elegant expression of contemporary living, the Silverwood's expansive vaulted great room, octagonal nook and open gourmet island kitchen merge seamlessly with its grand vaulted BBQ porch, creating an integrated indoor-outdoor space that is perfect for today's informal lifestyles. The contrasting formal den features a high beamed ceiling, while the luxurious master suite includes a fireplace, deluxe five-fixture bath with soaking tub, and a huge walk-in closet. Two secondary bedrooms are privately located with adjacent bathrooms. The large flex space can be used as a theatre, crafts or game room.

## SILVERWOOD - PLAN R3075A3F-0

### MAIN FLOOR





## SILVERWOOD - PLAN R3075A3F-0

### PLAN DETAILS

#### Area Summary

Total Area: 3075 sq. ft.  
Main Floor: 3075 sq. ft.  
Garage Floor: 716 sq. ft.

#### General Information

Stories: 1  
Width: 91'-0"  
Depth: 77'-0"  
Height: 23'-0"

#### Architectural Style

Craftsman  
Ranch  
Shingle

#### Number of Rooms

Bedrooms: 3  
Full Baths: 3

#### Garage

Garage Size: 3  
Garage Door Location: Front

#### Roof Pitches

Primary: 8:12  
Secondary: 4:12

#### Wall Heights

Main: 9'-0"  
Upper: 0'-0"  
3rd Floor: 0'-0"  
Lower: 0'-0"

#### Foundation Type

Crawl Space

#### Roof Framing

Trusses

#### Floor Load

Live (lbs): 40 PSF  
Dead (lbs): 10 PSF

#### Roof Load

Live (lbs): 25 PSF  
Dead (lbs): 15 PSF  
Wind: 85 MPH

#### Design Features

- Bonus Space @ Main Floor
- Den/Office
- Front and Rear Porch
- Great Room
- Laundry Room @ Main Floor
- Master Bedroom @ Main Floor Rear
- View Lot - Rear
- Wide Lot