



SHAWNEE - PLAN M2821A2FU-0DB

Total Area: 2823 sq. ft.
Garage Area: 510 sq. ft.
Garage Area: 510 sq. ft.
Garage Size: 2
Stories: 3
Bedrooms: 4
Full Baths: 4
Width: 52'-0"
Depth: 40'-0"
Height: 26'-6"
Foundation: Daylight Basement



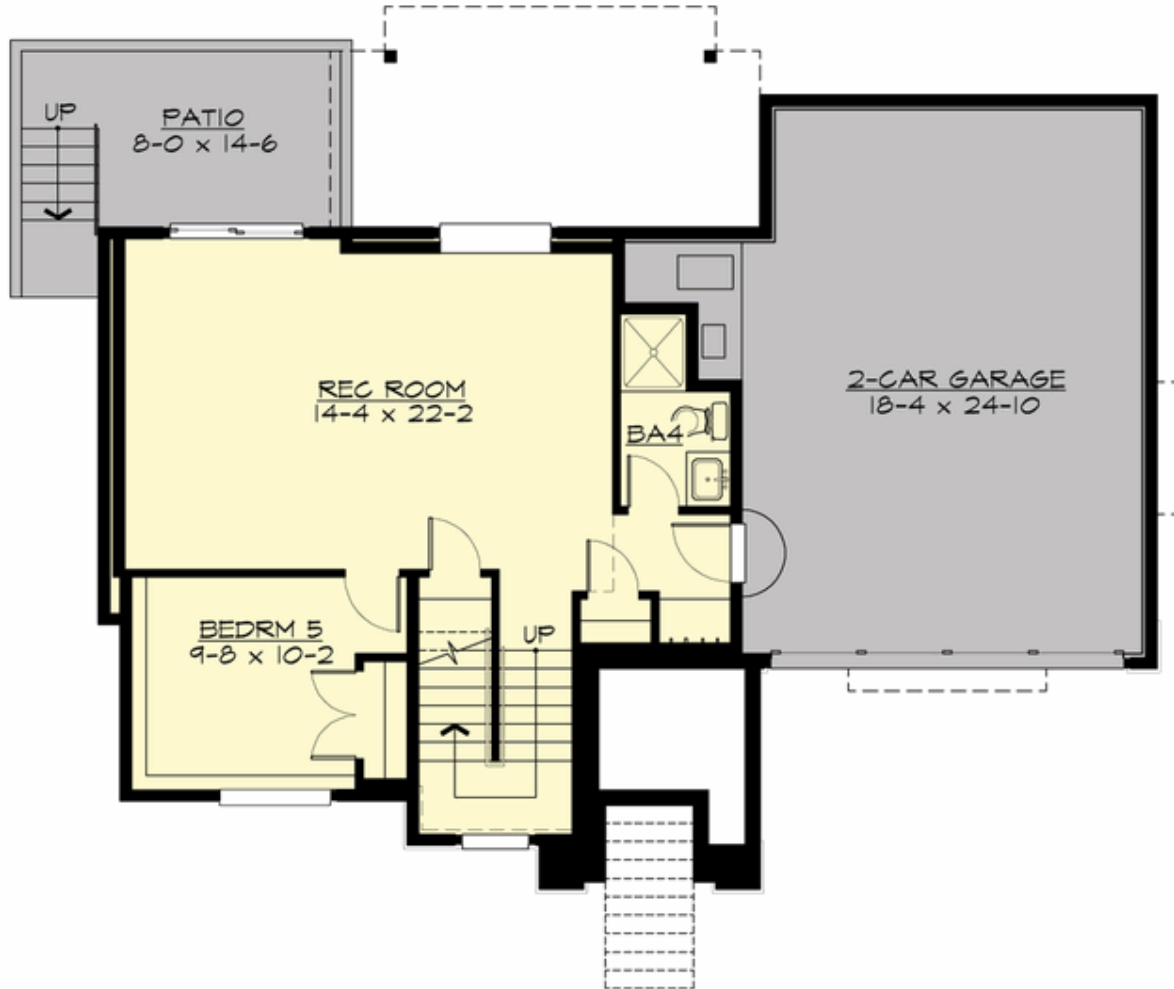
SHAWNEE - PLAN M2821A2FU-0DB

UPPER FLOOR



SHAWNEE - PLAN M2821A2FU-0DB

LOWER FLOOR





SHAWNEE - PLAN M2821A2FU-0DB

PLAN DETAILS

Area Summary

Total Area:	2823 sq. ft.
Main Floor:	1115 sq. ft.
Upper Floor:	1015 sq. ft.
Lower Floor:	693 sq. ft.
Garage Floor:	510 sq. ft.

General Information

Stories:	3
Width:	52'-0"
Depth:	40'-0"
Height:	26'-6"

Architectural Style

Craftsman
Lodge
Northwest

Number of Rooms

Bedrooms:	4
Full Baths:	4

Garage

Garage Size:	2
Garage Door Location:	Front
Garage Type:	Under

Roof Pitches

Primary:	4:12
Secondary:	3:12

Wall Heights

Main:	9'-0"
Upper:	8'-0"
Lower:	8'-0"

Foundation Type

Daylight Basement

Roof Framing

Trusses

Floor Load

Live (lbs):	40 PSF
Dead (lbs):	10 PSF

Roof Load

Live (lbs):	25 PSF
Dead (lbs):	15 PSF
Wind:	85 MPH

Design Features

- Bonus Space @ Lower Floor
- Den/Office
- Front and Rear Porch
- Great Room
- Laundry Room @ Upper Floor
- Master Bedroom @ Upper Floor Rear
- New Plan
- View Lot - Rear