



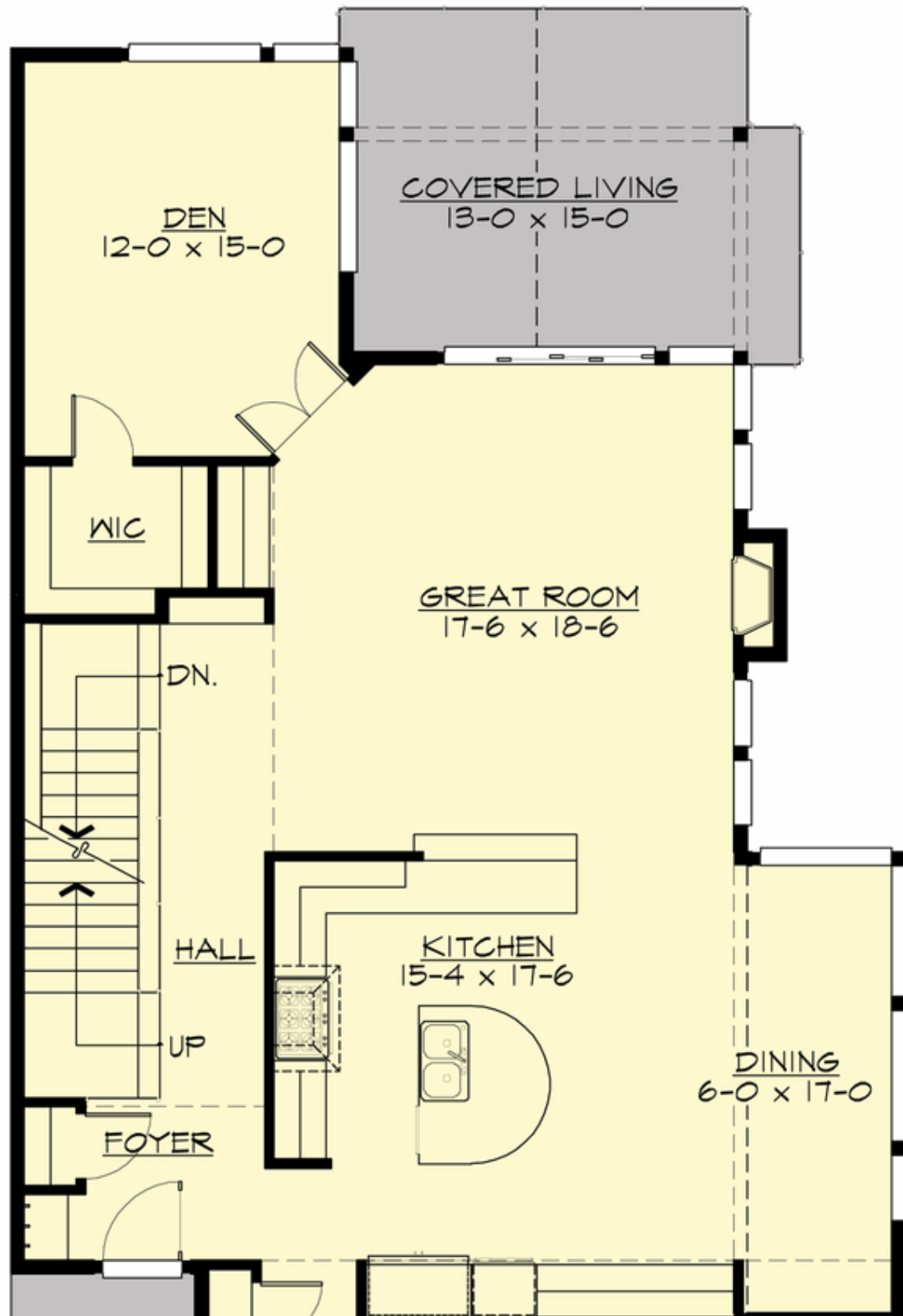
## ALTA - PLAN M3977A2FU-0DB

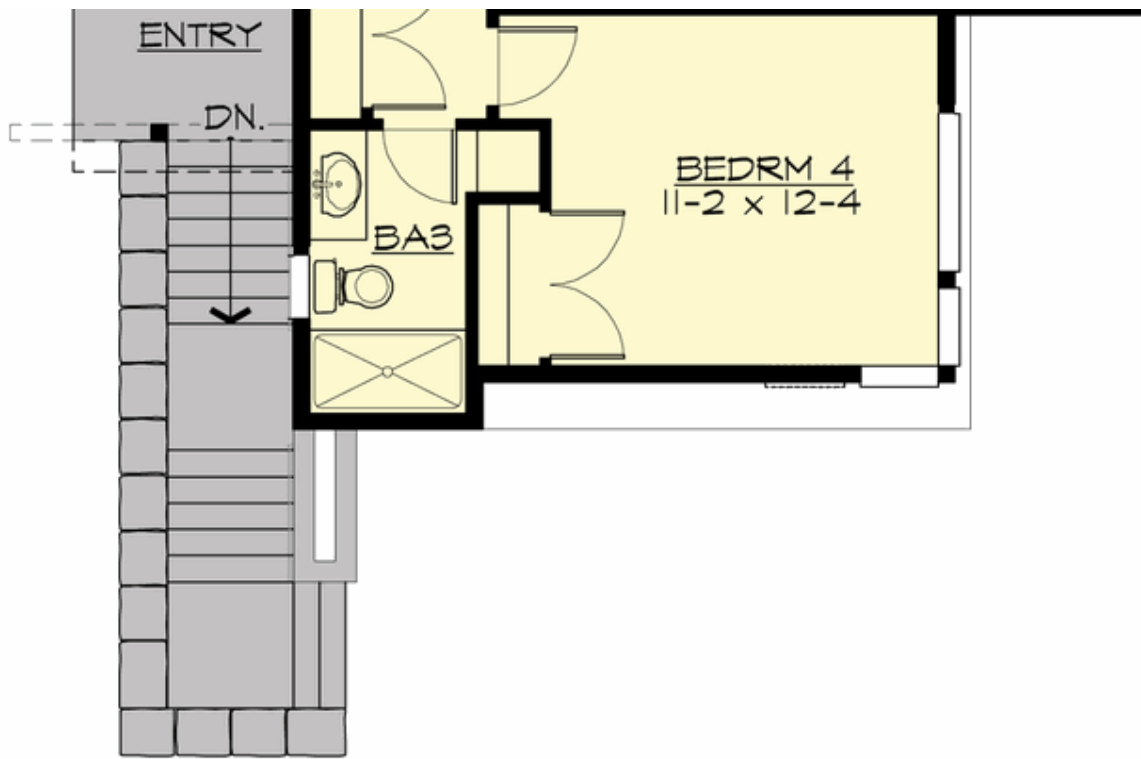
Total Area: 3977 sq. ft.  
Garage Area: 435 sq. ft.  
Garage Area: 435 sq. ft.  
Garage Size: 2  
Stories: 3  
Bedrooms: 5  
Full Baths: 4  
Width: 34'-0"  
Depth: 63'-0"  
Height: 26'-3"  
Foundation: Daylight Basement



## ALTA - PLAN M3977A2FU-0DB

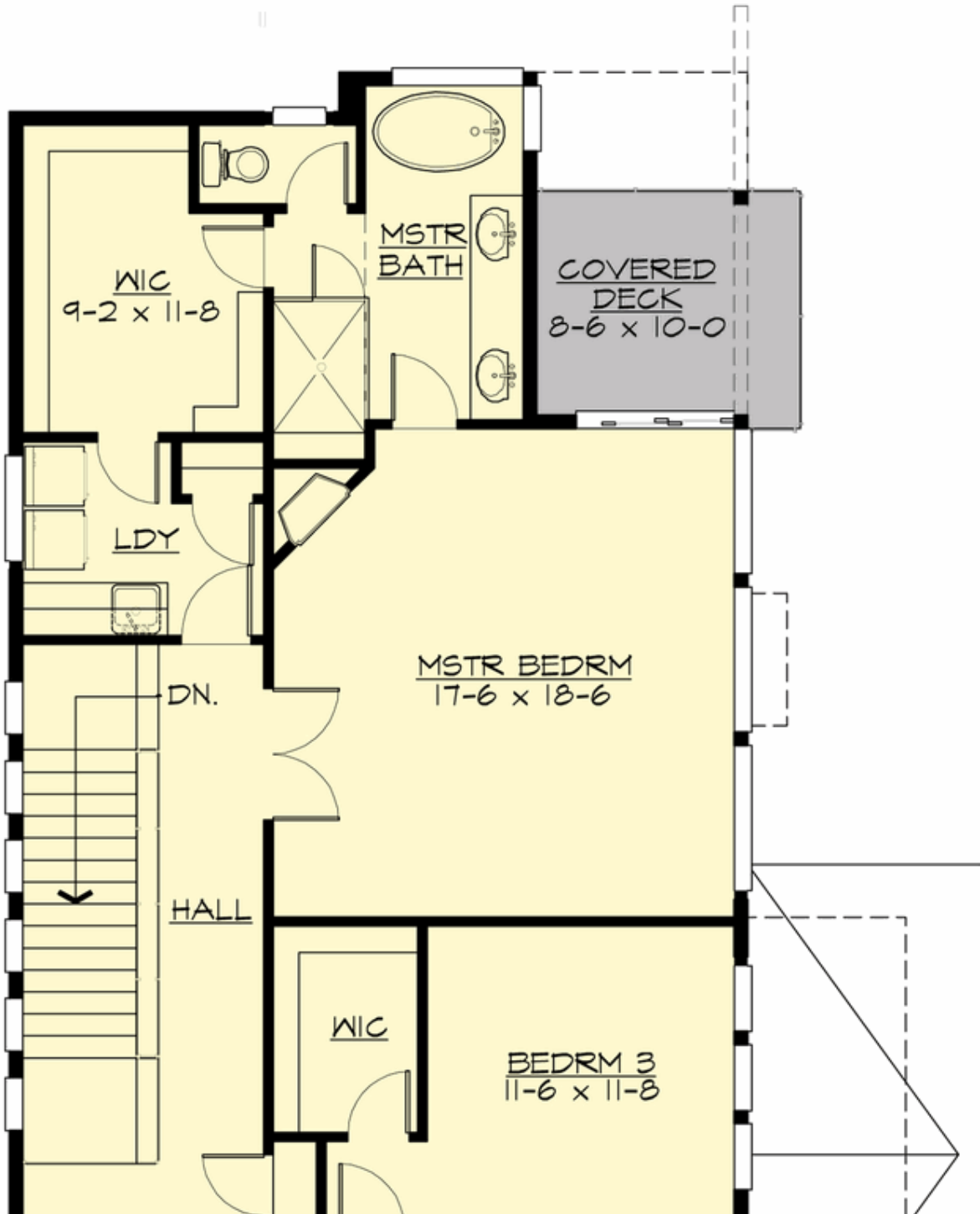
### MAIN FLOOR

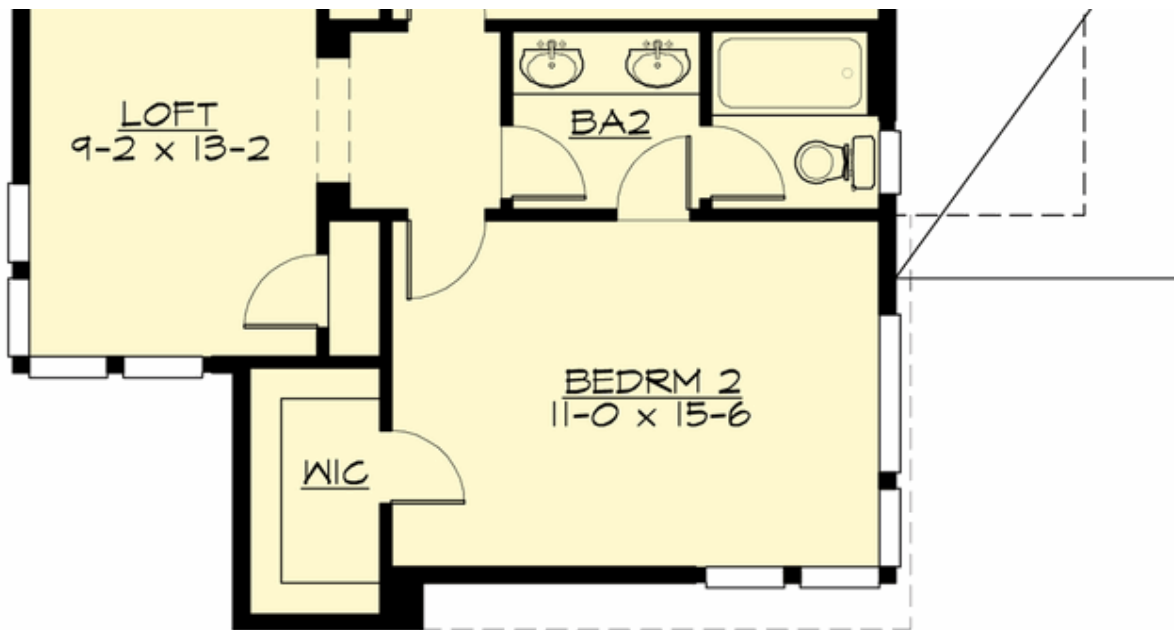




**ALTA - PLAN M3977A2FU-0DB**

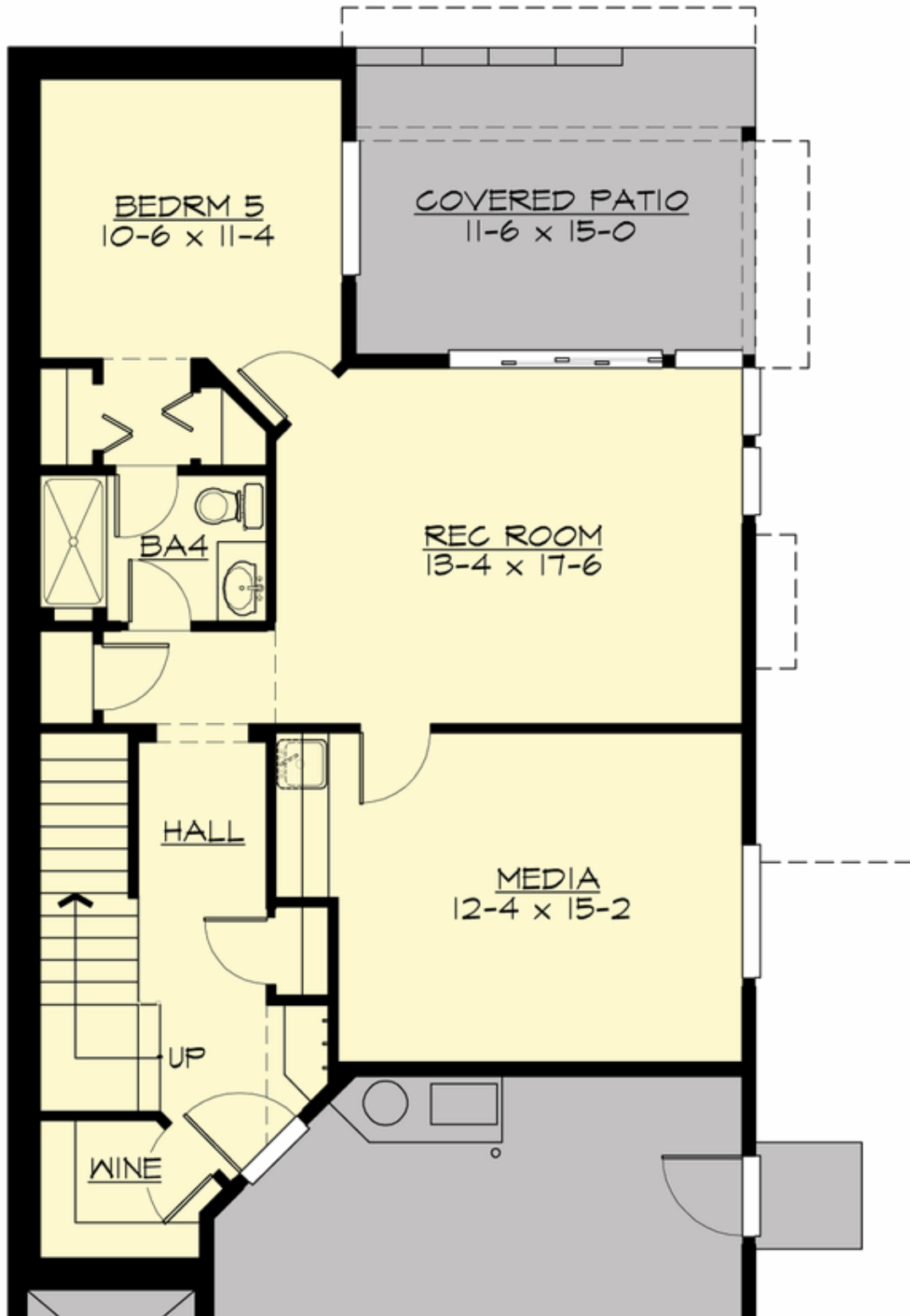
**UPPER FLOOR**

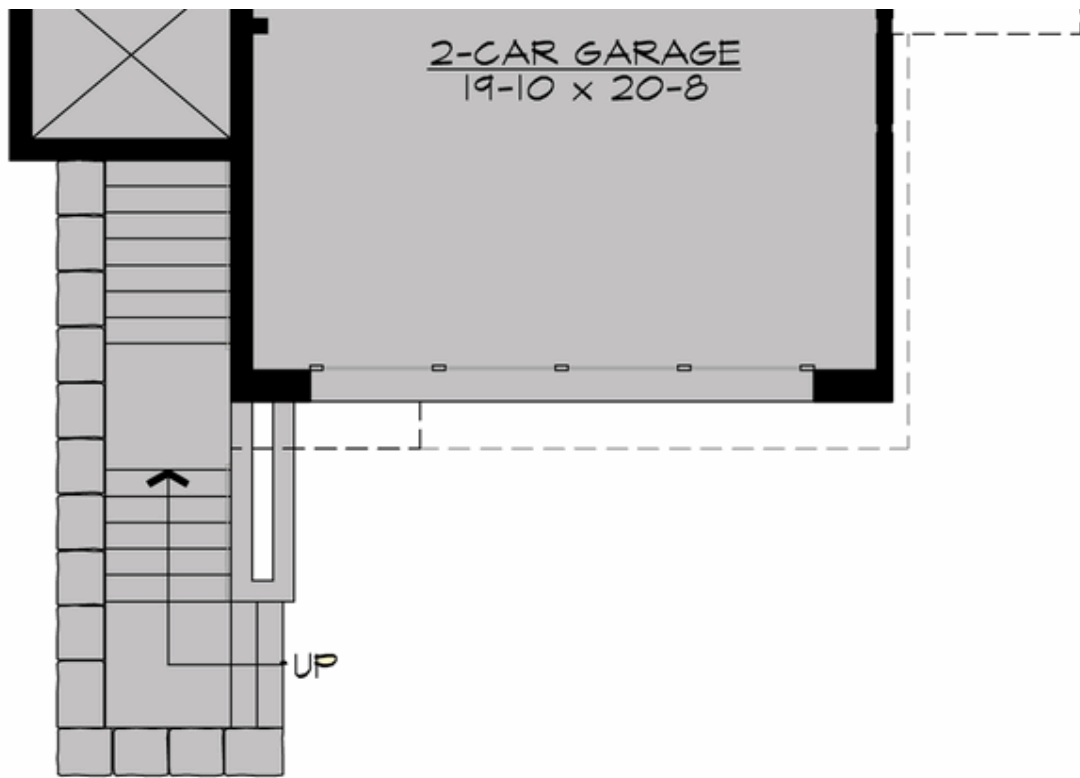




## ALTA - PLAN M3977A2FU-0DB

### LOWER FLOOR







## ALTA - PLAN M3977A2FU-0DB

### PLAN DETAILS

#### Area Summary

Total Area:	3977 sq. ft.
Main Floor:	1541 sq. ft.
Upper Floor:	1455 sq. ft.
3rd Floor:	981 sq. ft.
Garage Floor:	435 sq. ft.

#### General Information

Stories:	3
Width:	34'-0"
Depth:	63'-0"
Height:	26'-3"

#### Architectural Style

Contemporary  
Modern  
Northwest

#### Number of Rooms

Bedrooms:	5
Full Baths:	4

#### Garage

Garage Size:	2
Garage Door Location:	Front
Garage Type:	Under

#### Roof Pitches

Primary:	3:12
----------	------

#### Wall Heights

Main:	10'-0"
Upper:	8'-0"
Lower:	9'-0"

#### Foundation Type

Daylight Basement

#### Roof Framing

Stick

#### Floor Load

Live (lbs):	40 PSF
Dead (lbs):	10 PSF

#### Roof Load

Live (lbs):	25 PSF
Dead (lbs):	15 PSF
Wind:	85 MPH

#### Design Features

- Bonus Space @ Lower Floor
- Den/Office
- Front and Rear Porch
- Great Room
- Laundry Room @ Upper Floor
- Master Bedroom @ Upper Floor Rear
- Narrow Lot
- New Plan