



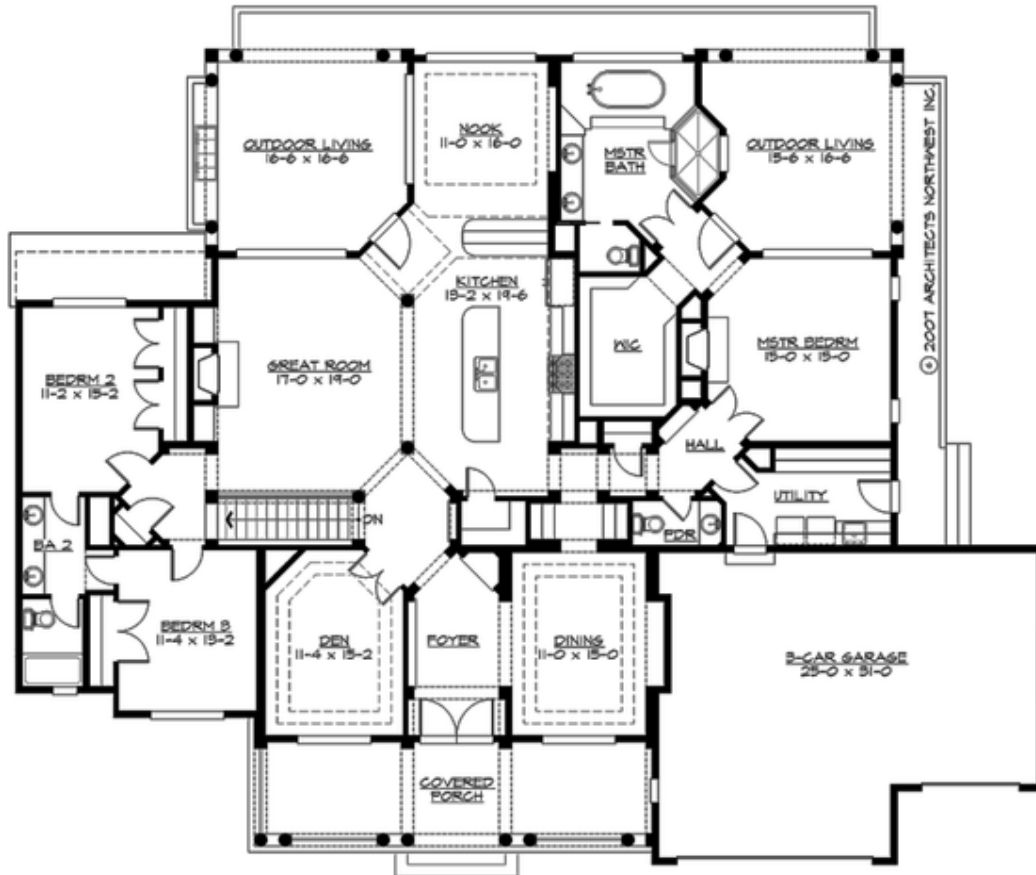
PACIFIC COVE HEIGHTS - PLAN R2820A3F-0DB

Total Area: 4445 sq. ft.
Garage Area: 0 sq. ft.
Garage Area: 0 sq. ft.
Garage Size: 3
Stories: 2
Bedrooms: 5
Full Baths: 3
Half Baths: 2
Width: 84'-0"
Depth: 67'-0"
Height: 24'-6"
Foundation: Daylight Basement



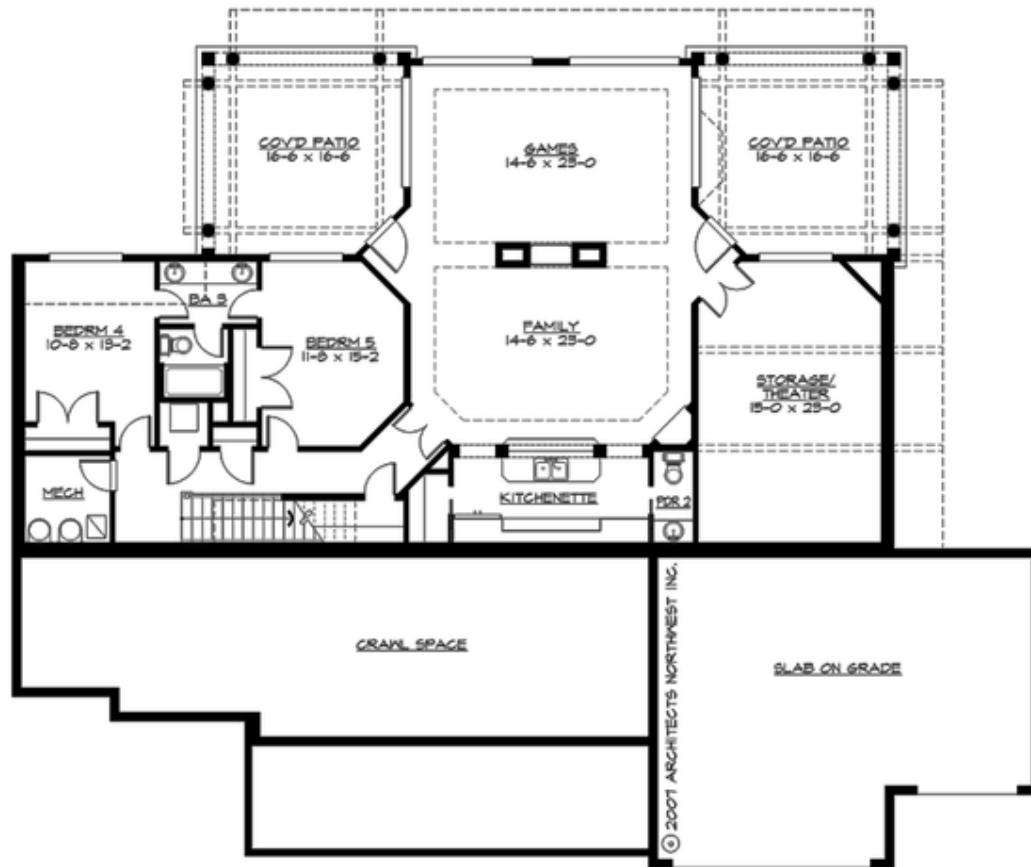
PACIFIC COVE HEIGHTS - PLAN R2820A3F-0DB

MAIN FLOOR



PACIFIC COVE HEIGHTS - PLAN R2820A3F-0DB

LOWER FLOOR





PACIFIC COVE HEIGHTS - PLAN R2820A3F-0DB

PLAN DETAILS

Area Summary

Total Area: 4445 sq. ft.
Main Floor: 2770 sq. ft.
Lower Floor: 1675 sq. ft.

General Information

Stories: 2
Width: 84'-0"
Depth: 67'-0"
Height: 24'-6"

Architectural Style

Farmhouse
Hampton
Shingle

Number of Rooms

Bedrooms: 5
Full Baths: 3
Half Baths: 2

Garage

Garage Size: 3
Garage Door Location: Front

Roof Pitches

Primary: 8:12
Secondary: 6:12

Wall Heights

Main: 10'-0"
Upper: 0'-0"
3rd Floor: 0'-0"
Lower: 10'-0"

Foundation Type

Daylight Basement

Roof Framing

Trusses

Floor Load

Live (lbs): 40 PSF
Dead (lbs): 10 PSF

Roof Load

Live (lbs): 25 PSF
Dead (lbs): 15 PSF
Wind: 85 MPH

Design Features

- Bonus Space @ Lower Floor
- Den/Office
- Front and Rear Porch
- Great Room
- Green Plan
- Laundry Room @ Main Floor
- Master Bedroom @ Main Floor Rear
- Wide Lot